

ATLANTIC VERSION TERMINATOR INTERFACE ADAPTER	PART NUMBER	REVISION	DESCRIPTION	FEED TYPE	APPLICATOR STYLE CONVERSION CHART						
					CONVERT TO	PART NUMBERS REQUIRED					
	2151720-1	A	FINE CRIMP HEIGHT ADJUST	MECHANICAL	PNEUMATIC FEED	2119950-1	1338685-1	5-18022-5	2119641-1	2119799-1	2063440-1
					SERVO LATCH PLATE	2119951-1	-	8-2151720-5	1901094-3	-	2168400-6 (QUANTITY 2)
					SMART APPLICATOR	2161326-1	-	8-2151720-4	-	-	-
	2151720-2	A	FINE CRIMP HEIGHT ADJUST	PNEUMATIC	MECHANICAL FEED	2119949-1	1338685-1	5-18022-5	2119653-1	-	-
					SERVO LATCH PLATE	2119951-1	-	8-2151720-5	1901094-3	-	2168400-6 (QUANTITY 2)
					SMART APPLICATOR	2161326-1	-	8-2151720-4	-	-	-
	2151720-5	A	FINE CRIMP HEIGHT ADJUST	SERVO LATCH PLATE <sup>4</sup>	MECHANICAL FEED	2119949-1	1338685-1	5-18022-5	2119653-1	-	-
					PNEUMATIC FEED	2119950-1	1338685-1	5-18022-5	2119641-1	2119799-1	2063440-1
	2151720-6	A	NON-CRIMP HEIGHT ADJUST	SERVO LATCH PLATE <sup>4</sup>	NONE	-	-	-	-	-	-
	2151720-7	A	FINE CRIMP HEIGHT ADJUST	NONE	-	-	-	-	-	-	-
	7-2151720-7	A	CRIMP TOOLING KIT	-	-	-	-	-	-	-	-

APPLICATOR DATA		
CRIMP WIRE	SIZE	TYPE
2.03 mm [.080]		F
3.50 mm [.138]		F
APPLICATOR INSTRUCTIONS 408-10389		

TERMINAL DATA: TE TERMINAL	TE CRIMP SPECIFICATION
TERMINAL NAME: TAB CONTACT MULTI 6P DOUBLE LOCK	
WIRE STRIP LENGTH: 3.00-4.00 mm [.118-.157 IN]	INSULATION DIAMETER RANGE: Ø1.80-3.10 mm [.071-.122 IN]
TERMINAL APPLICATION SPECIFICATION: 114-106071	
TERMINALS APPLIED	
TE TERMINAL: 1983661-1	TE TERMINAL: 1983663-1

WIRE SIZE	CRIMP HEIGHT mm [INCH]	CRIMP HEIGHT REFERENCE SETTING
16 AWG	1.66 +/- 0.05 [.065 +/- .002]	3.5
18 AWG	1.56 +/- 0.05 [.061 +/- .002]	4.6
2X 20 AWG	1.43 +/- 0.05 [.056 +/- .002]	5.9
20 AWG	1.36 +/- 0.05 [.054 +/- .002]	6.6

- 1. RECOMMENDED SPARE PARTS
- 2. GREASE BEARING SURFACES LIGHTLY
- 3. LUBRICATE DAILY PER THE APPLICATOR INSTRUCTION SHEET SUPPLIED WITH THE APPLICATOR.
- 4. APPLICATOR SPECIFIC DATA TO BE ENTERED INTO BLANK MEMORY CHIP AT ASSEMBLY. SEE BELOW FOR PART NUMBER:
  - MECHANICAL FEED WITH "SMART APPLICATOR" CONVERSION: 8-2151720-4
  - PNEUMATIC FEED WITH "SMART APPLICATOR" CONVERSION: 8-2151720-4
  - SERVO FEED WITH "FINE CRIMP HEIGHT ADJUST": 8-2151720-5
  - SERVO FEED WITH "NON-CRIMP HEIGHT ADJUST": 8-2151720-6
- 5. ADJUSTMENT OF THE STRIPPER MAY BE REQUIRED WHEN MOVING THE APPLICATOR BETWEEN BENCH AND LEADMAKER APPLICATIONS.
- 6. APPLY PART NUMBER 1-23419-5 LOCTITE TO THREADS OF ITEM 50.
- 7. GREASE THREADS, GROOVE AND O-RING ON ITEMS 35 & 252.
- 8. MAGNET, ITEM 166 MUST BE ORIENTED CORRECTLY IN ORDER TO PROPERLY ACTUATE THE COUNTER.
- 9. CRIMP HEIGHT REFERENCE SETTING WAS THE SETTING USED WHEN THE APPLICATOR WAS QUALIFIED AT THE FACTORY. ADJUSTMENT MAY BE NECESSARY WHEN RUNNING APPLICATOR IN THE FIELD.
- 10. SPARE FEED CAM STORAGE LOCATION REFER TO INSTRUCTION SHEET FOR ADDITIONAL INFORMATION.
- 11. TO CONVERT THE APPLICATOR TO A NON-CARRIER CUTTING STYLE, REMOVE ITEM 13 AND ATTACH TO THE LOCATION ON THE BACK SIDE OF THE HOUSING. REFER TO INSTRUCTION SHEET FOR ADDITIONAL INFORMATION.
- 12. WHEN ASSEMBLING -6 NON-CRIMP HEIGHT ADJUST APPLICATOR USE SHIM PACK 2119957-2 TO ALIGN APPLICATOR'S MAXIMUM WIRE CRIMP HEIGHT AT NORMAL TERMINATOR SHUT HEIGHT

**\*WARNING**  
 ON INSTALLATION, SET WIRE DISC, ITEM 40 TO LARGEST WIRE SIZE SETTING. USE OF SETTINGS BELOW MINIMUM REQUIRED CRIMP HEIGHT SETTING WILL CAUSE DAMAGE TO CRIMP TOOLING.

												ITEM NO
-	-	1	-	-	-	2119957-2	APPLICATOR SHIM PACK					260
-	1	-	1	1	1	8-21084-0	O-RING, .676 ID, .070 DIA. MAT.					252
-	-	-	-	1	-	2119640-1	PUSH ROD, AIR FEED					250
-	-	-	-	1	-	2079988-1	BUSHING, LCH5-12, MISUMI					249
-	-	-	-	1	-	2119641-1	FEED CAM, AIR FEED					248
-	1	-	1	1	1	2119798-1	DETENT PIN					247
-	1	-	1	1	1	1-22279-3	SPRING, COMPRESSION					246
-77	-7	-6	-5	-2	-1	PART NO	DESCRIPTION					ITEM NO

ATLANTIC VERSION  
 Shown on sheets 1 of 4 & 2 of 4  
 (Pacific version shown on sheets 3 of 4 & 4 of 4)

SET UP GAUGE	LOC	DIST	REVISIONS			
2119599-1	A	66	P	L	D	A
			A	RELEASE	21SEP2012	L.Z S.X

P	L	D	A	DESCRIPTION	DATE	OWN	APP'D					
-	-	1	-	-	2119758-1	RAM, AMP STYLE, SIDE FEED, NON-ADJ.	245					
-	1	1	1	1	2119082-9	CAM, SNAIL, INSULATION ADJUSTMENT	244					
-	1	1	1	1	2079764-1	WASHER, WAVE SPRING, CREST-TO-CREST	243					
-	1	1	1	1	2119083-1	RETAINER, INSULATION DIAL	242					
-	1	1	1	1	7-18023-7	SCR, SKT HD CAP M3 X 4.0	241					
-	-	2	2	-	2168400-6	SHCS, LOW HEAD, RoHS, M5 X 16	240					
-	-	-	-	-	2119580-1	MECHANICAL FEED ASSEMBLY	239					
-	-	-	-	1	2063440-1	AIR FEED MODULE	238					
-	2	2	2	2	1-2079383-0	SCR, BHSC, RoHS (M3 X 6)	230					
-	-	1	1	-	2119740-2	TAG, IDENTIFICATION	213					
-	-	1	1	-	1901094-3	SPACER, FEEDER	198					
-	1	1	1	1	1-1976053-3	LOCATER BLOCK, TERMINAL	179					
-	1	1	1	1	993111-1	PIN, SLOTTED SPRING 3.0 X 20.0	177					
-	1	1	1	1	8-22280-7	SPRING, COMPRESSION	176					
-	1	1	1	1	1752353-2	GUIDE PIN, HOLDDOWN	175					
-	1	1	1	1	1901680-2	GUIDE PIN, HOLDDOWN	174					
-	-	-	-	2	21045-3	RING, RETAIN, EXTERN, 3/16 CRESCENT	172					
-	1	1	1	1	994969-1	MAGNET, RARE EARTH HIGH ENERGY	166					
-	REF	REF	REF	REF	994970-2	COUNTER, MAGNETIC	164					
-	-	-	-	1	240638-1	SPRING, FEED FINGER	163					
-	-	-	-	1	3-23627-7	PIN, RETAIN, GRVD, 3/16 X .854	137					
-	-	-	-	1	2119799-1	HOLDER, FEED FINGER, AF	136					
-	-	REF	REF	-	SEE NOTE 4	MEMORY CHIP, PROGRAMMED	135					
-	-	1	1	-	1633743-1	SERVO FEED LATCH ASM	133					
-	1	1	1	1	1-18028-2	WASHER, FLAT, REG M4	119					
-	-	REF	REF	-	2119944-1	FEED FINGER ASSEMBLY, SF	117					
-	1	1	1	1	455888-8	SPACER, CRIMPER	82					
-	1	1	1	1	2119956-1	DOCUMENTATION PACKAGE	71					
-	1	-	-	1	2119740-1	TAG, IDENTIFICATION	67					
-	2	2	2	2	2168078-1	SCREW, DRIVE, RH, RoHS	66					
-	1	-	-	1	2119793-1	LIMITER, ADJUSTMENT BOLT	63					
-	3	-	3	3	992763-5	SCR, SET, SOC, CONE POINT, M3 X 4.0	62					
-	1	1	1	1	2079383-4	SCR, BHSC, RoHS (M4 X 8)	60					
-	-	-	-	1	5-18022-5	SCR, HEX HD CAP, M4 X 6.0	59					
-	-	-	-	1	1338685-1	PAWL, FEED	56					
-	4	4	4	4	2168400-1	SHCS, LOW HEAD, RoHS, M4 X 12	54					
-	1	1	1	1	1-5018030-0	NUT, HEX, REG, RoHS, M3.5	52					
-	1	1	1	1	1-1901681-5	HOLDDOWN, TERMINAL	51					
-	1	1	1	1	1-1752354-7	STANDOFF, HOLD-DOWN	50					
-	-	-	-	1	2	18023-9	SCR, SKT HD CAP M4 X 6.0	49				
-	-	-	-	-	1	2119652-1	FEED CAM, PRE FEED	48				
-	-	-	-	-	1	2119653-1	FEED CAM, POST FEED	47				
-	1	1	1	1	2119656-9	APPLICATOR BASIC ASSEMBLY, SF	46					
-	1	-	-	1	1	2119370-1	RAM, AMP STYLE, SIDE FEED	44				
-	1	1	1	1	2079383-7	SCR, BHSC, RoHS (M8 X 25)	41					
-	1	-	-	1	1	2119645-1	DISC, NUMBERED FA WIRE ADJUSTMENT	40				
-	1	-	-	1	1	2119957-1	APPLICATOR SHIM PACK	39				
-	1	1	1	1	1	2119644-2	RAM WASHER, PRECISION	38				
-	1	1	1	1	1	2119085-1	FA HEAD, ATLANTIC STYLE	37				
-	1	-	-	1	1	2119092-1	BOLT, ADJUSTMENT	35				
-	1	1	1	1	1	1752356-3	SUPPORT, TERMINAL	34				
-	2	2	2	2	2	2079383-5	SCR, BHSC, RoHS (M4 X 20)	33				
-	1	1	1	1	1	2161328-1	HEX HEAD, FLANGED, M5 X 8mm LONG	32				
-	1	1	1	1	1	1-1320908-2	SPACER, STRIP GUIDE	30				
-	1	1	1	1	1	2119959-1	ASSEMBLY, STRIP GUIDE	29				
-	1	1	1	1	1	2-455888-0	SPACER, CRIMPER	28				
-	1	1	1	1	1	1320928-2	STRIP GUIDE	24				
-	1	1	1	1	1	2168083-2	SCR, SKT HD CAP, RoHS, M4 X 8.0	21				
-	1	1	1	1	1	1-18028-2	WASHER, FLAT, REG M4	20				
-	1	1	1	1	1	2119533-1	STRIPPER, SIDE FEED	19				
-	1	1	1	1	1	2119806-1	INSERT, SHEAR	13				
-	1	1	1	1	1	3-22280-3	SPRING, COMPRESSION	12				
-	1	1	1	1	1	1-356885-4	STOP, SHEAR	11				
-	1	1	1	1	1	2119805-1	SHEAR HOLDER, FRONT	10				
-	1	1	1	1	1	454276-5	FLOATING SHEAR, FRONT	9				
-	1	1	1	1	1	1633920-6	ANVIL, COMBINATION	8				
-	-	-	-	-	-	-	-	7				
-	-	-	-	-	-	-	-	6				
-	1	1	1	1	1	2119757-4	DEPRESSOR, SHEAR	5				
-	1	1	1	1	1	238011-7	BLOCK, CRIMPER SPACER	4				
-	1	1	1	1	1	2-2119582-8	CRIMPER, INSULATION F PREMIUM	3				
-	1	1	1	1	1	455888-1	SPACER, CRIMPER	2				
-	1	1	1	1	1	3-730251-0	CRIMPER, WIRE	1				
-77	-7	-6	-5	-2	-1	PART NO	DESCRIPTION					ITEM NO

**STE** TE Connectivity  
 Harrisburg, PA 17105-3608

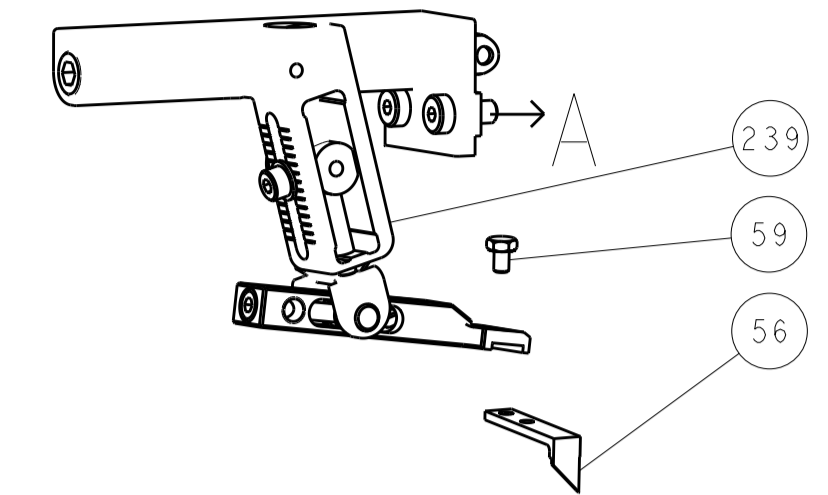
NAME: Ocean Side Feed Applicator

SIZE: A1 | CAGE CODE: 00779 | DRAWING NO: 2151720

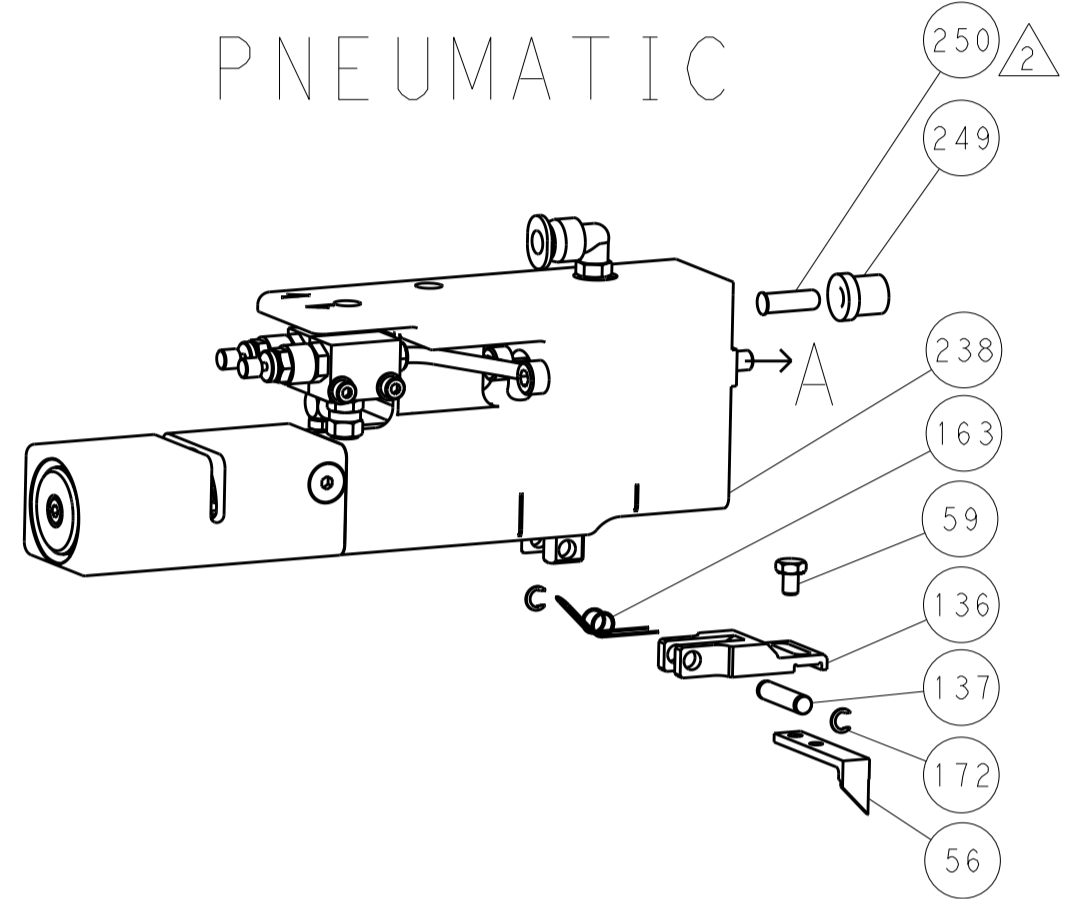
Customer Accessible Production Drawing | SCALE: 1:1 | SHEET: 1 OF 4 | REV: A

LOC		DIST		REVISIONS				
A	66	P	LTM	DESCRIPTION	DATE	DWN	APVD	
		-		SEE SHEET 1				

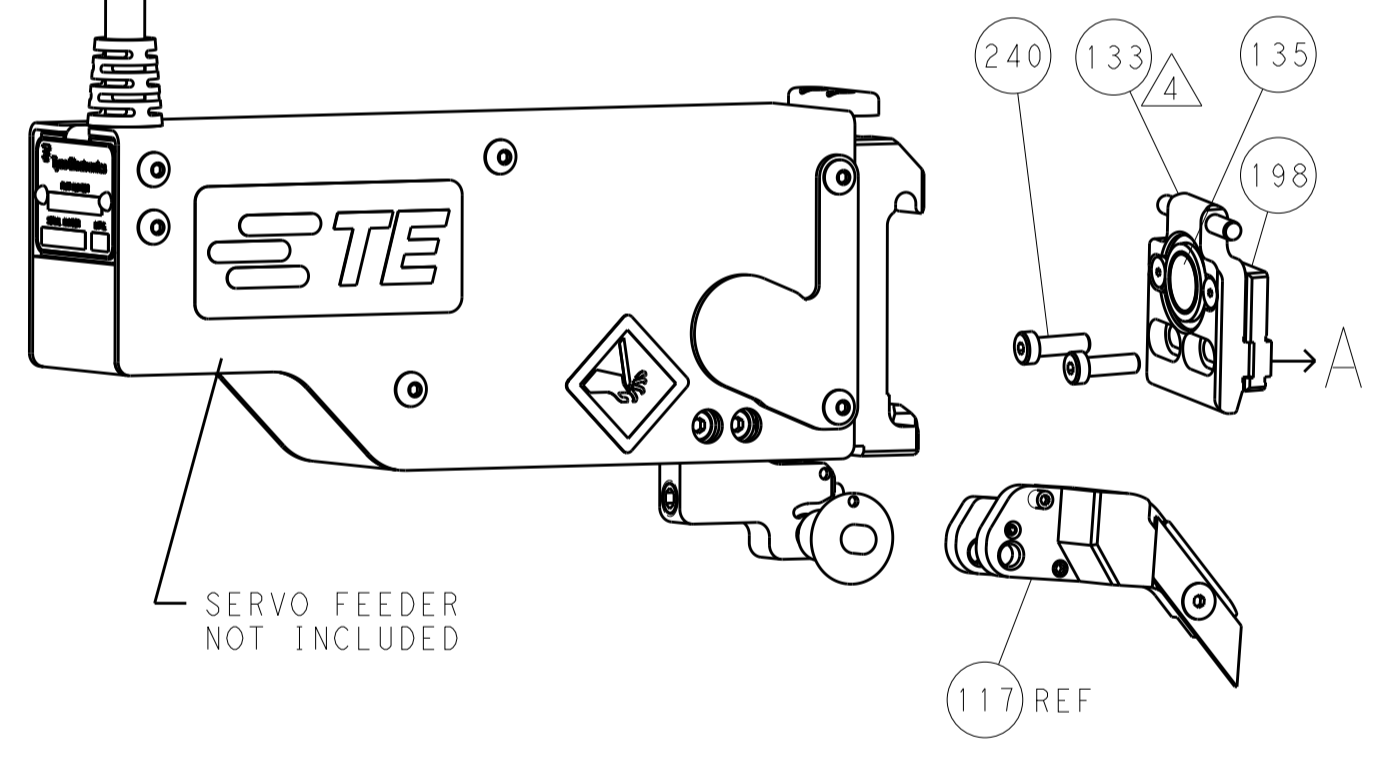
### FEED TYPE MECHANICAL



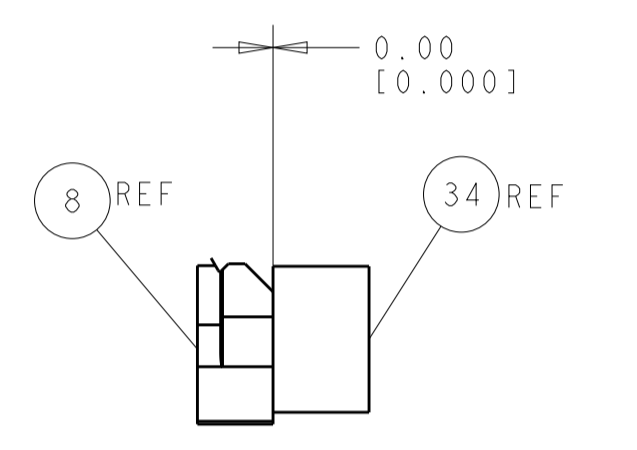
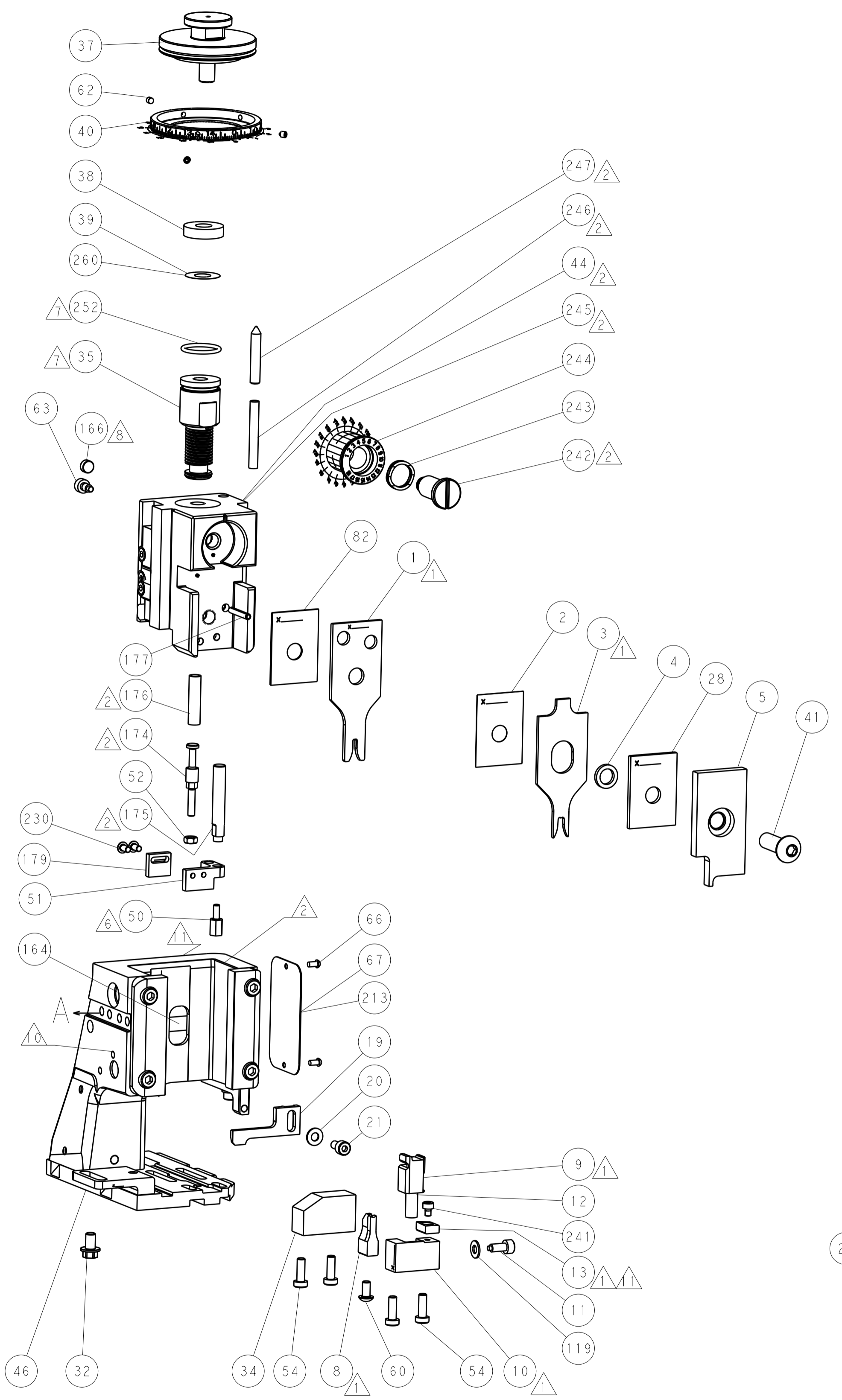
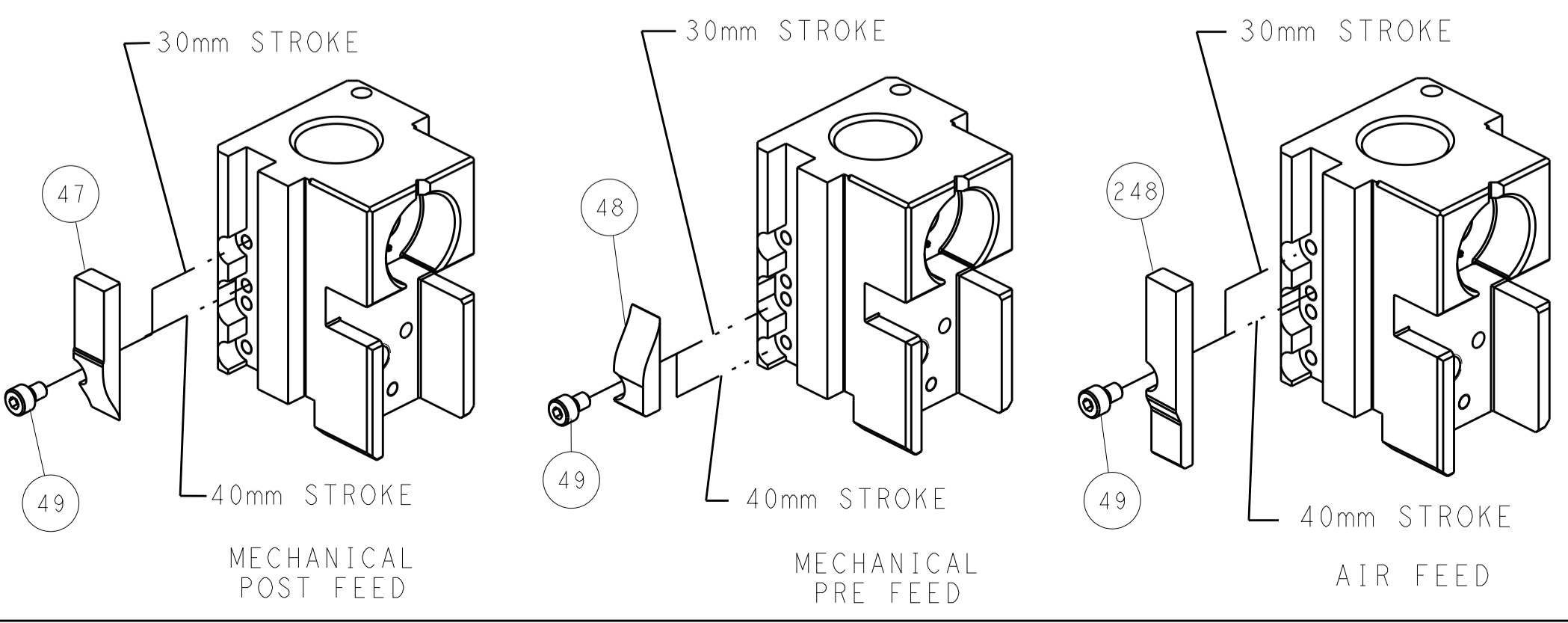
### PNEUMATIC



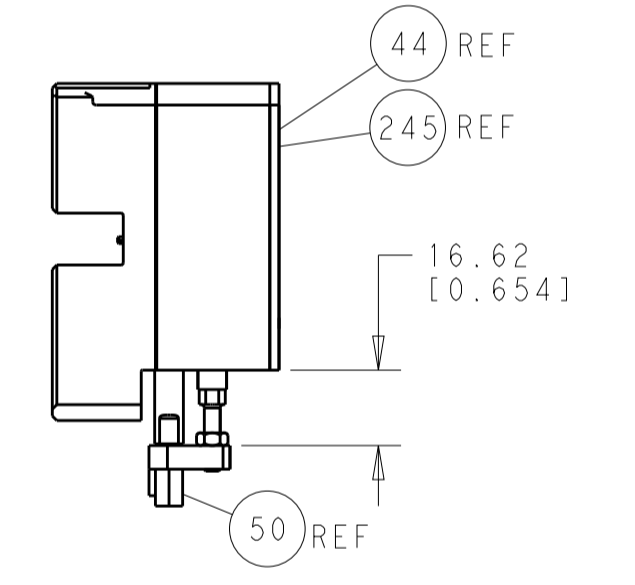
### SERVO LATCH PLATE



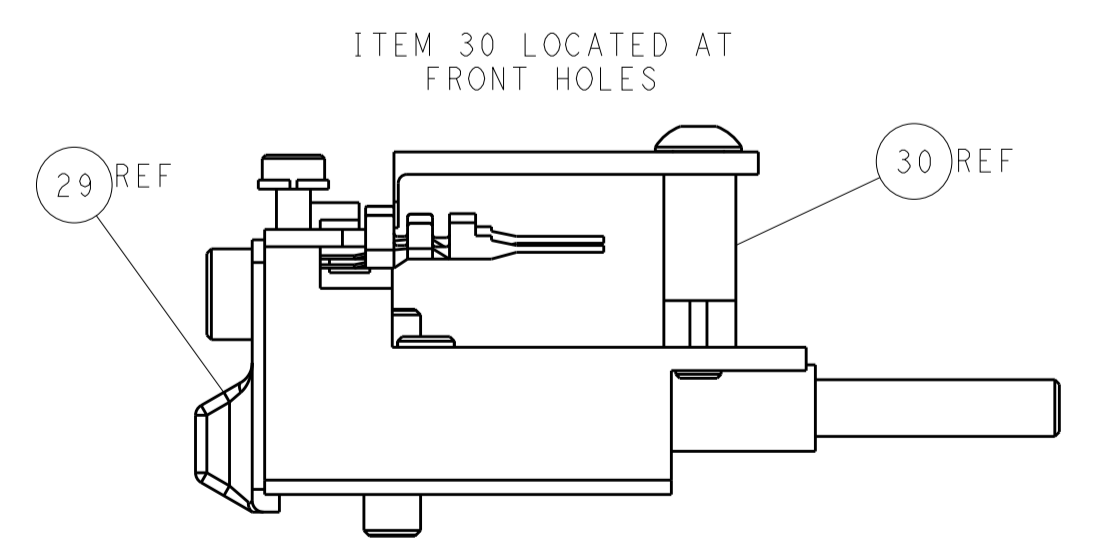
### CAM POSITIONS



TERMINAL SUPPORT LOCATION



HOLDDOWN SET-UP

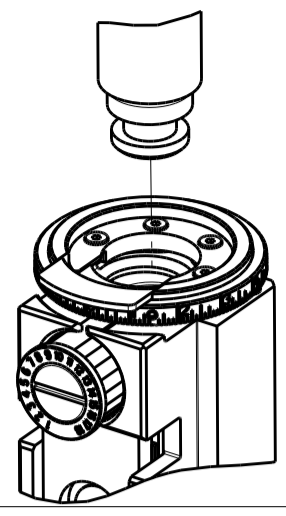


FEED TRACK POSITION GUIDE BY INSULATION BARREL

**ATLANTIC VERSION**  
 Shown on sheets 1 of 4 & 2 of 4  
 (Pacific version shown on sheets 3 of 4 & 4 of 4)

DIMENSIONS:		TOLERANCES UNLESS OTHERWISE SPECIFIED:		DWN H. HUANG 17JUL2012		TE Connectivity Harrisburg, PA 17105-3608	
mm	0 PLC ±0.1	1 PLC ±0.1	2 PLC ±0.02	3 PLC ±0.005	4 PLC ±0.0005	APVD S. XI 17JUL2012	NAME Ocean Side Feed Applicator
MATERIAL:		FINISH:		WEIGHT:		SIZE CAGE CODE DRAWING NO A1 00779 ©=2151720	
				Customer Accessible Production Drawing		RESTRICTED TO SCALE 1:1 SHEET 2 OF 4 REV A	

PART NUMBER	REVISION	DESCRIPTION	FEED TYPE	CONVERT TO						
				PART NUMBERS REQUIRED						
2-2151720-1	A	FINE CRIMP HEIGHT ADJUST	MECHANICAL	PNEUMATIC FEED	2119950-1	1338685-1	5-18022-5	2119641-2	2119799-1	2063440-1
				SERVO LATCH PLATE	2119951-1	-	8-2151720-5	1901094-3	-	2168400-6 (QUANTITY 2)
				SMART APPLICATOR	2161326-1	-	8-2151720-4	-	-	
2-2151720-2	A	FINE CRIMP HEIGHT ADJUST	PNEUMATIC	MECHANICAL FEED	2119949-1	1338685-1	5-18022-5	2119653-2	-	-
				SERVO LATCH PLATE	2119951-1	-	8-2151720-5	1901094-3	-	2168400-6 (QUANTITY 2)
				SMART APPLICATOR	2161326-1	-	8-2151720-4	-	-	
2-2151720-5	A	FINE CRIMP HEIGHT ADJUST	SERVO LATCH PLATE	2119949-1	1338685-1	5-18022-5	2119653-2	-	-	
2-2151720-7	A	FINE CRIMP HEIGHT ADJUST	NONE	-	-	-	-	-	-	
7-2151720-7	A	CRIMP TOOLING KIT	-	-	-	-	-	-	-	



APPLICATOR DATA		
CRIMP	SIZE	TYPE
WIRE	2.03 mm [.080]	F
INSUL	3.50 mm [.138]	F
APPLICATOR INSTRUCTIONS 408-10389		

TERMINAL DATA: TE TERMINAL		TE CRIMP SPECIFICATION	
TERMINAL NAME: TAB CONTACT MULTI 6P DOUBLE LOCK			
WIRE STRIP LENGTH 3.00-4.00 mm [1.18-.157 IN]		INSULATION DIAMETER RANGE Ø1.80-3.10 mm [0.071-.122 IN]	
TERMINAL APPLICATION SPECIFICATION	114-106071	-	-
TERMINALS APPLIED			
TE TERMINAL	TE TERMINAL	TE TERMINAL	TE TERMINAL
1983661-1	1983663-1	-	-

WIRE SIZE	CRIMP HEIGHT mm [INCH]	CRIMP HEIGHT REFERENCE SETTING
16 AWG	1.66 +/- 0.05 [0.065 +/- .002]	3.5
18 AWG	1.56 +/- 0.05 [0.061 +/- .002]	4.6
2X 20 AWG	1.43 +/- 0.05 [0.056 +/- .002]	5.9
20 AWG	1.36 +/- 0.05 [0.054 +/- .002]	6.6

- RECOMMENDED SPARE PARTS
- GREASE BEARING SURFACES LIGHTLY
- 3. LUBRICATE DAILY PER THE APPLICATOR INSTRUCTION SHEET SUPPLIED WITH THE APPLICATOR.
- APPLICATOR SPECIFIC DATA TO BE ENTERED INTO BLANK MEMORY CHIP AT ASSEMBLY. SEE BELOW FOR PART NUMBER:  
MECHANICAL FEED WITH "SMART APPLICATOR" CONVERSION: 8-2151720-4  
PNEUMATIC FEED WITH "SMART APPLICATOR" CONVERSION: 8-2151720-4  
SERVO FEED WITH "FINE CRIMP HEIGHT ADJUST": 8-2151720-5
- 5. ADJUSTMENT OF THE STRIPPER MAY BE REQUIRED WHEN MOVING THE APPLICATOR BETWEEN BENCH AND LEADMAKER APPLICATIONS.
- APPLY PART NUMBER 1-23419-5 LOCTITE TO THREADS OF ITEM 50.
- GREASE THREADS, GROOVE AND O-RING ON ITEMS 139 & 152.
- MAGNET MUST BE ORIENTED CORRECTLY IN ORDER TO PROPERLY ACTUATE THE COUNTER.
- CRIMP HEIGHT REFERENCE SETTING WAS THE SETTING USED WHEN THE APPLICATOR WAS QUALIFIED AT THE FACTORY. ADJUSTMENT MAY BE NECESSARY WHEN RUNNING APPLICATOR IN THE FIELD.
- SPARE FEED CAM STORAGE LOCATION REFER TO INSTRUCTION SHEET FOR ADDITIONAL INFORMATION.
- TO CONVERT THE APPLICATOR TO A NON-CARRIER CUTTING STYLE, REMOVE ITEM 13 AND ATTACH TO THE LOCATION ON BACK SIDE OF THE HOUSING. REFER TO INSTRUCTION SHEET FOR ADDITIONAL INFORMATION.

**\*WARNING**  
ON INSTALLATION, SET WIRE DISC, ITEM 40 TO LARGEST WIRE SIZE SETTING. USE OF SETTINGS BELOW MINIMUM REQUIRED CRIMP HEIGHT SETTING WILL CAUSE DAMAGE TO CRIMP TOOLING.

-	1	1	1	1	2119782-1	FINE ADJUST HEAD ASM, PACIFIC STYLE	251
-	-	-	-	-	2119640-1	PUSH ROD, AIR FEED	250
-	-	-	-	-	2079988-1	BUSHING, LCH5-12, MISUMI	249
-	1	1	1	1	1-22279-3	SPRING, COMPRESSION	246
-	1	1	1	1	2119082-9	CAM, SNAIL, INSULATION ADJUSTMENT	244
-77	-27	-25	-22	-21	PART NO	DESCRIPTION	ITEM NO

**PACIFIC VERSION**  
Shown on sheets 3 of 4 & 4 of 4  
(Atlantic version shown on sheets 1 of 4 & 2 of 4)

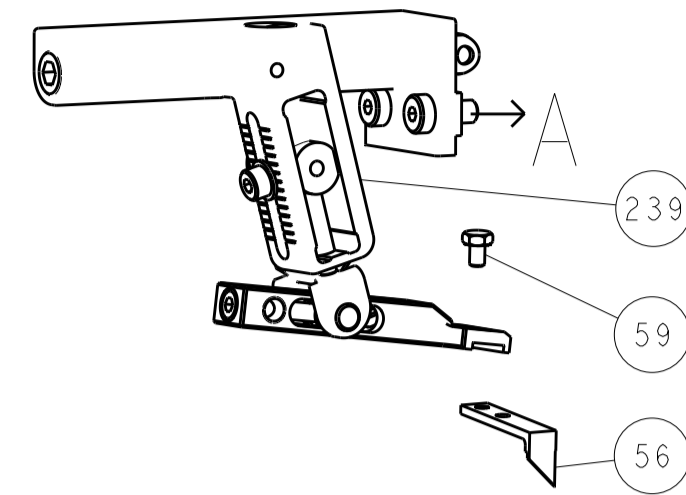
LOC	DIST	REV	DATE	BY	CHK	APPV
A	66					

REVISIONS							
REV	DATE	BY	CHK	APPV	DESCRIPTION	ITEM NO	
-	-	-	-	-	SEE SHEET 1	-	
-	1	1	1	1	2079764-1	WASHER, WAVE SPRING, CREST-TO-CREST	243
-	1	1	1	1	2119083-1	RETAINER, INSULATION DIAL	242
-	1	1	1	1	7-18023-7	SCR, SKT HD CAP M3 X 4.0	241
-	2	-	-	-	2168400-6	SHCS, LOW HEAD, RoHS, M5 X 16	240
-	-	-	-	1	2119580-1	MECHANICAL FEED ASSEMBLY	239
-	-	-	-	1	2063440-1	AIR FEED MODULE	238
-	2	2	2	2	1-2079383-0	SCR, BHSC, RoHS (M3 X 6)	230
-	-	1	-	-	2119740-2	TAG, IDENTIFICATION	213
-	-	1	-	-	1901094-3	SPACER, FEEDER	198
-	1	1	1	1	1-1976053-3	LOCATER BLOCK, TERMINAL	179
-	1	1	1	1	993111-1	PIN, SLOTTED SPRING 3.0 X 20.0	177
-	1	1	1	1	8-22280-7	SPRING, COMPRESSION	176
-	1	1	1	1	1752353-2	GUIDE PIN, HOLDDOWN	175
-	1	1	1	1	1901680-2	GUIDE PIN, HOLDDOWN	174
-	-	-	2	-	21045-3	RING, RETAIN, EXTERN, 3/16 CRESCENT	172
-	1	1	1	1	994969-1	MAGNET, RARE EARTH HIGH ENERGY	166
-	REF	REF	REF	REF	994970-2	COUNTER, MAGNETIC	164
-	-	-	1	-	240638-1	SPRING, FEED FINGER	163
-	1	1	1	1	8-21084-1	O-RING, .801 ID, .070 DIA. MAT.	152
-	-	-	1	-	2119641-2	FEED CAM, AIR FEED	151
-	1	1	1	1	2119798-2	DETENT PIN	145
-	1	1	1	1	2079383-8	SCR, BHSC, RoHS (M4 X 16)	144
-	4	4	4	4	2168400-5	SHCS, LOW HEAD, RoHS, M4 X 20	143
-	-	-	-	1	2119653-2	FEED CAM, POST FEED	142
-	1	1	1	1	1-2119656-0	APPLICATOR BASIC ASSEMBLY, SF	141
-	1	1	1	1	2119650-1	RAM, ASIAN STYLE, SIDE FEED	140
-	1	1	1	1	2119092-2	BOLT, ADJUSTMENT	139
-	-	-	1	-	3-23627-7	PIN, RETAIN, GRVD, 3/16 X .854	137
-	-	-	1	-	2119799-1	HOLDER, FEED FINGER, AF	136
-	-	REF	-	-	SEE NOTE 4	MEMORY CHIP, PROGRAMMED	135
-	-	1	-	-	1633743-1	SERVO FEED LATCH ASM	133
-	1	1	1	1	1-18028-2	WASHER, FLAT, REG M4	119
-	-	REF	-	-	2119944-1	FEED FINGER ASSEMBLY, SF	117
-	1	1	1	1	455888-8	SPACER, CRIMPER	82
-	1	1	1	1	2119956-1	DOCUMENTATION PACKAGE	71
-	1	-	1	1	2119740-1	TAG, IDENTIFICATION	67
-	2	2	2	2	2168078-1	SCREW, DRIVE, RH, RoHS	66
-	1	1	1	1	2119793-1	LIMITER, ADJUSTMENT BOLT	63
-	3	3	3	3	992763-5	SCR, SET, SOC, CONE POINT, M3 X 4.0	62
-	-	-	1	1	5-18022-5	SCR, HEX HD CAP, M4 X 6.0	59
-	-	-	-	1	1338685-1	PAWL, FEED	56
-	1	1	1	1	1-5018030-0	NUT, HEX, REG, RoHS, M3.5	52
-	1	1	1	1	1-1901681-5	HOLDDOWN, TERMINAL	51
-	1	1	1	1	1-1752354-7	STANDOFF, HOLD-DOWN	50
-	-	-	1	2	18023-9	SCR, SKT HD CAP M4 X 6.0	49
-	-	-	-	1	2119652-1	FEED CAM, PRE FEED	48
-	1	1	1	1	2079383-7	SCR, BHSC, RoHS (M8 X 25)	41
-	1	1	1	1	2119645-1	DISC, NUMBERED FA WIRE ADJUSTMENT	40
-	1	1	1	1	2119957-1	APPLICATOR SHIM PACK	39
-	1	1	1	1	2119644-2	RAM WASHER, PRECISION	38
-	1	1	1	1	1752356-3	SUPPORT, TERMINAL	34
-	2	2	2	2	2079383-5	SCR, BHSC, RoHS (M4 X 20)	33
-	1	1	1	1	2161328-1	HEX HEAD, FLANGED, M5 X 8mm LONG	32
-	1	1	1	1	1-1320908-2	SPACER, STRIP GUIDE	30
-	1	1	1	1	2119959-1	ASSEMBLY, STRIP GUIDE	29
-	1	1	1	1	2-455888-0	SPACER, CRIMPER	28
-	1	1	1	1	1320928-2	STRIP GUIDE	24
-	1	1	1	1	2168083-2	SCR, SKT HD CAP, RoHS, M4 X 8.0	21
-	1	1	1	1	1-18028-2	WASHER, FLAT, REG M4	20
-	1	1	1	1	2119533-1	STRIPPER, SIDE FEED	19
-	1	1	1	1	2119806-1	INSERT, SHEAR	13
-	1	1	1	1	3-22280-3	SPRING, COMPRESSION	12
-	1	1	1	1	1-356885-4	STOP, SHEAR	11
-	1	1	1	1	2119805-1	SHEAR HOLDER, FRONT	10
-	1	1	1	1	454276-5	FLOATING SHEAR, FRONT	9
-	1	1	1	1	1633920-6	ANVIL, COMBINATION	8
-	-	-	-	-	-	-	7
-	-	-	-	-	-	-	6
-	1	1	1	1	2119757-4	DEPRESSOR, SHEAR	5
-	1	1	1	1	238011-7	BLOCK, CRIMPER SPACER	4
-	1	1	1	1	2-2119582-8	CRIMPER, INSULATION F PREMIUM	3
-	1	1	1	1	455888-1	SPACER, CRIMPER	2
-	1	1	1	1	3-730251-0	CRIMPER, WIRE	1
-77	-27	-25	-22	-21	PART NO	DESCRIPTION	ITEM NO

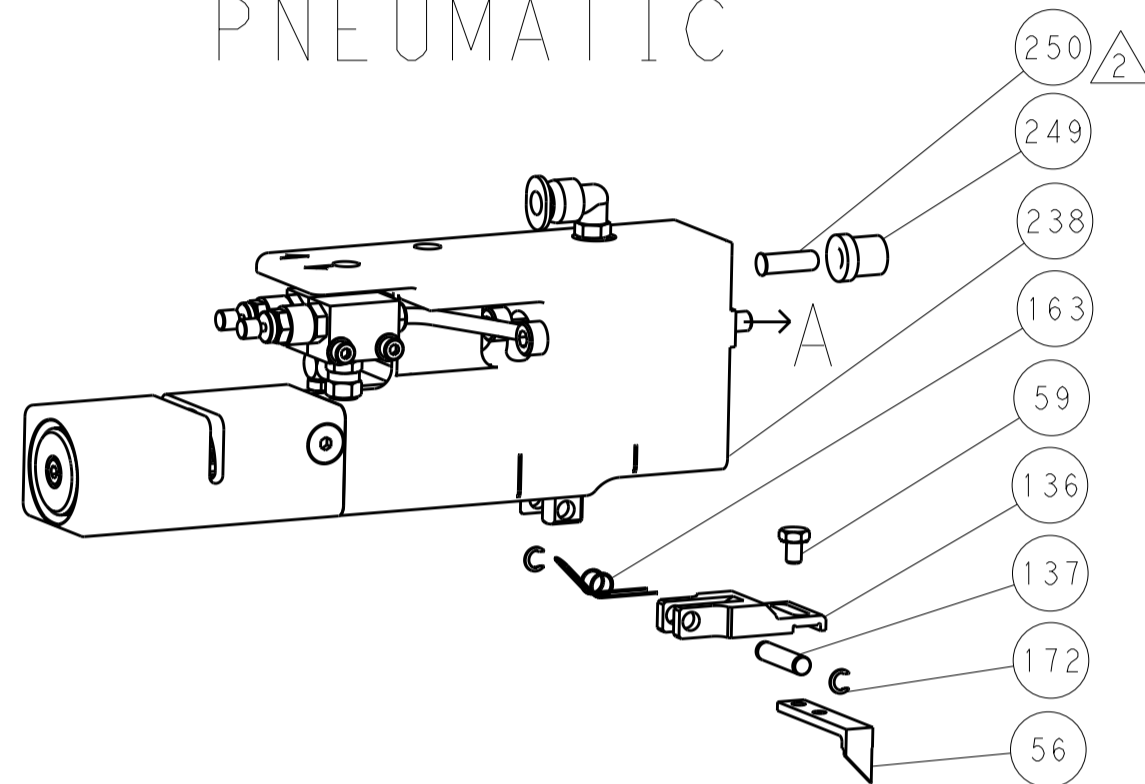
DIMENSIONS:		TOLERANCES UNLESS OTHERWISE SPECIFIED:		DATE	CHK	APPV
mm	0 PLC ±.1	1 PLC ±0.1	2 PLC ±0.2	17 JUL 2012	H. HUANG	S. XI
	3 PLC ±0.05	4 PLC ±0.005	ANGLES ±.1	17 JUL 2012	S. XI	S. XI
MATERIAL:		FINISH:		PRODUCT SPEC	NAME	
				APPLICATION SPEC	Ocean Side Feed Applicator	
				WEIGHT	SIZE CASE CODE DRAWING NO	
					A 00779 C-2151720	
				Customer Accessible Production Drawing		
				SCALE	SHEET 3 OF 4	
				REV A		

LOC	DIST	REVISIONS					
		P	LTN	DESCRIPTION	DATE	OWN	APVD
A	66	-	-	SEE SHEET 1	-	-	-

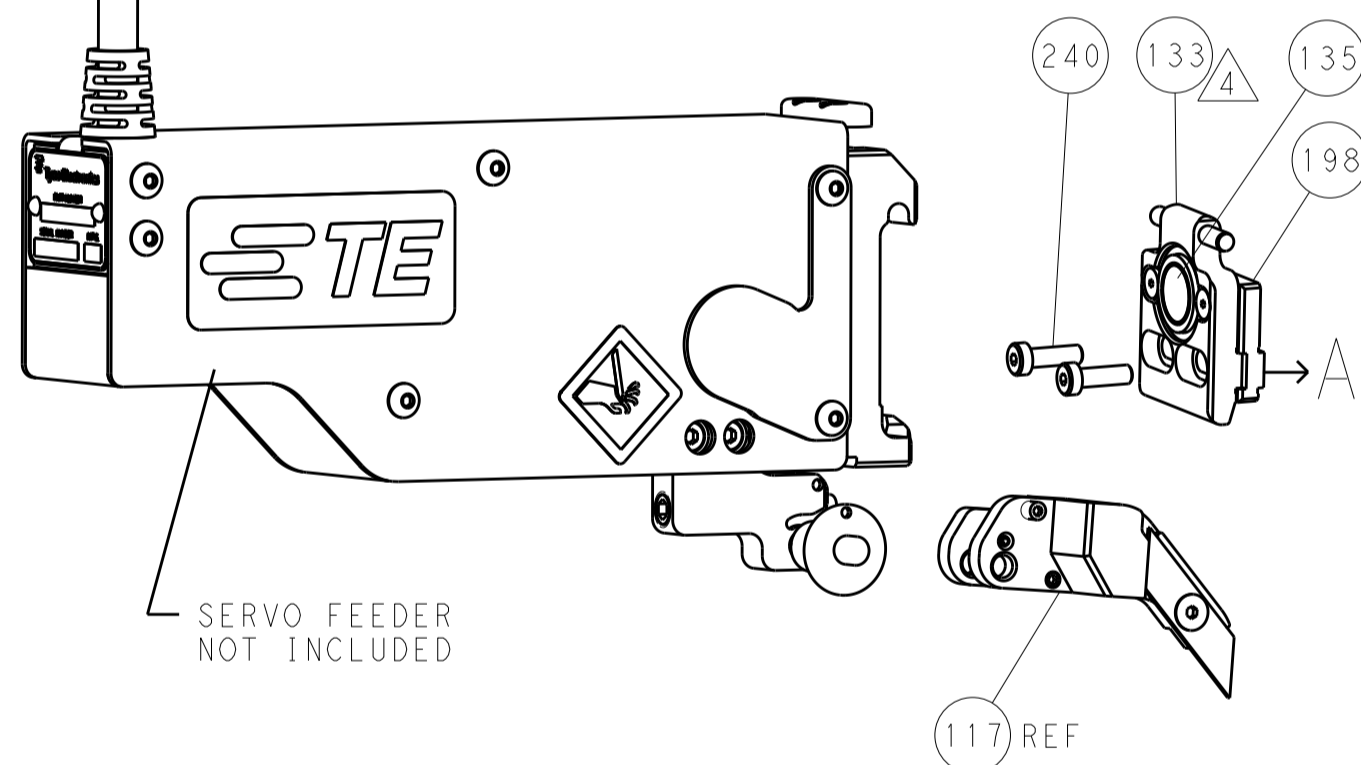
# FEED TYPE MECHANICAL



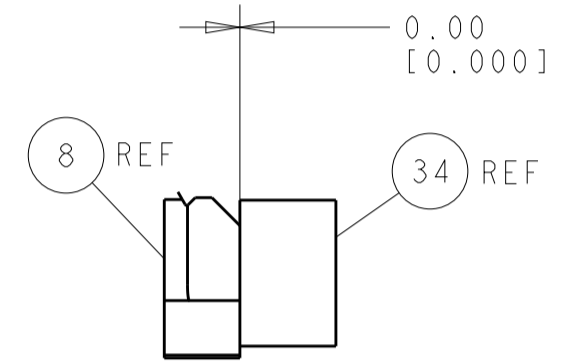
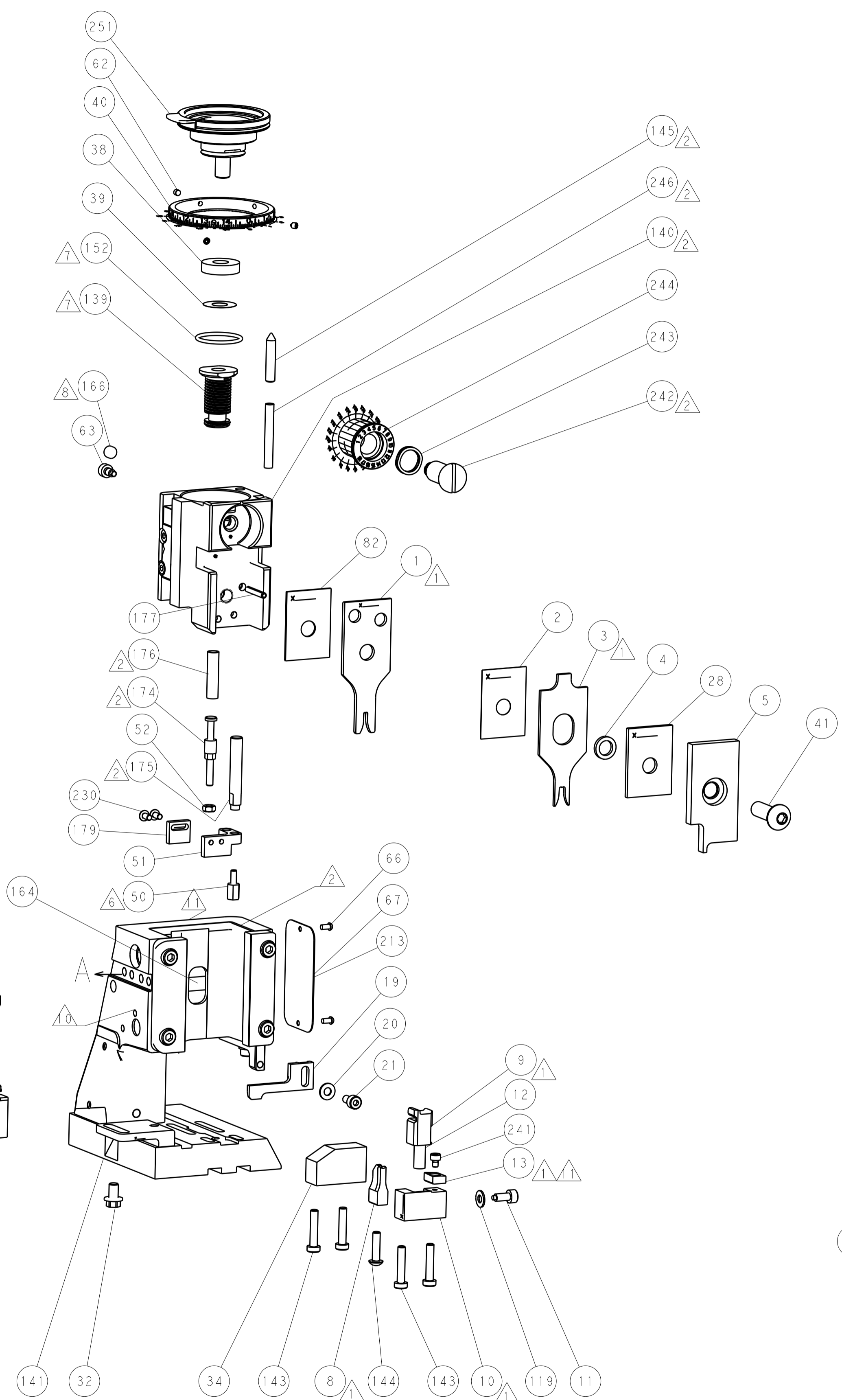
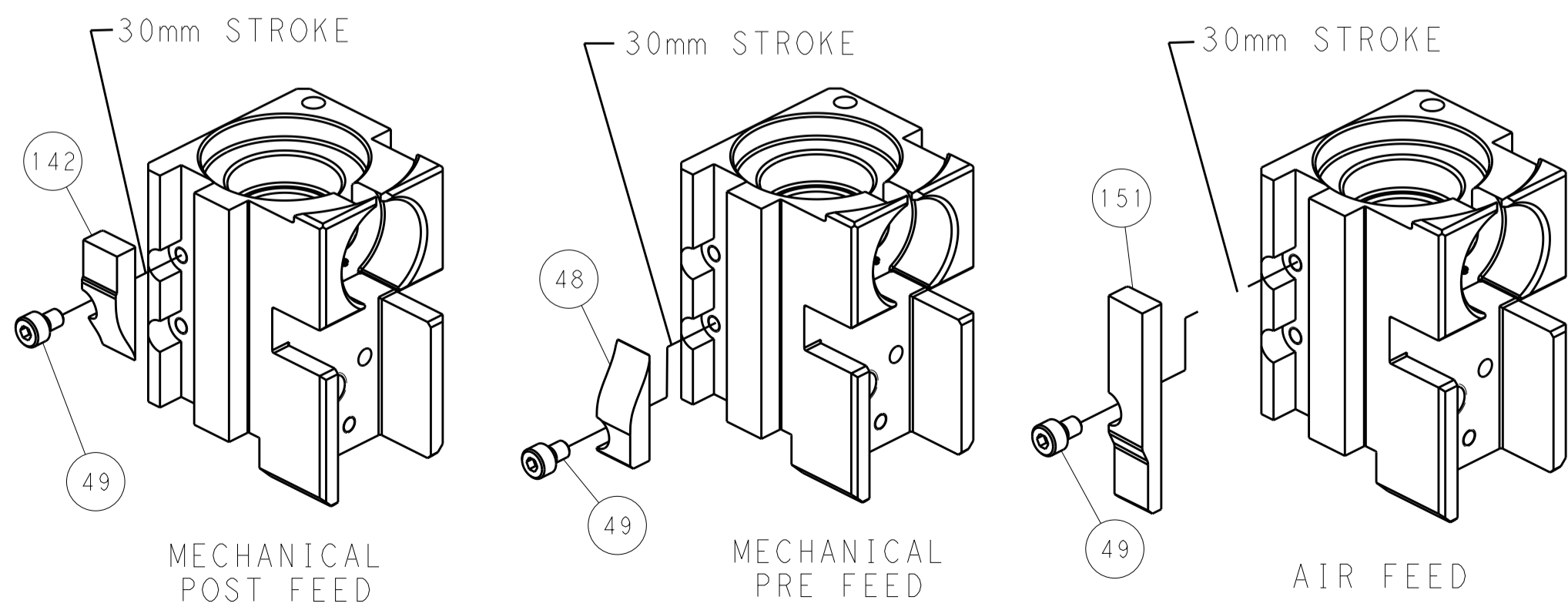
# PNEUMATIC



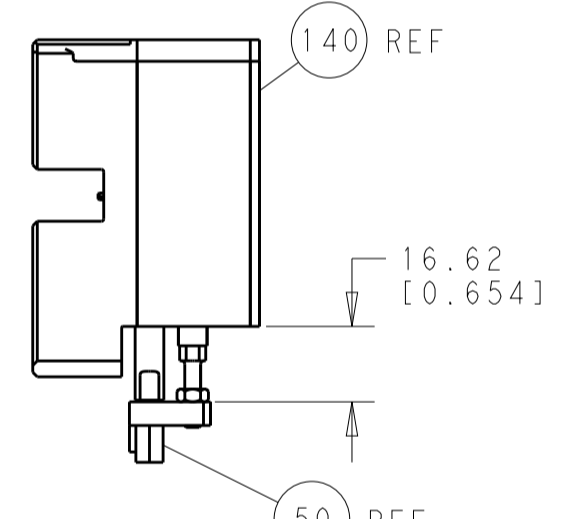
# SERVO LATCH PLATE



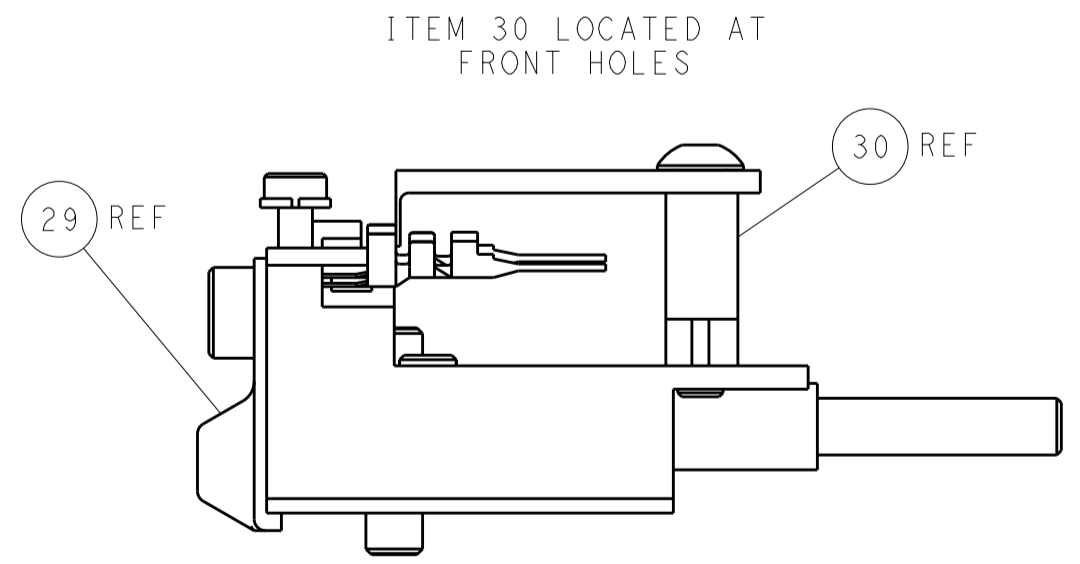
# CAM POSITIONS



TERMINAL SUPPORT LOCATION



HOLDDOWN SET-UP



FEED TRACK POSITION GUIDE BY INSULATION BARREL

**PACIFIC VERSION**  
 Shown on sheets 3 of 4 & 4 of 4  
 (Atlantic version shown on sheets 1 of 4 & 2 of 4)

<small>THE INFORMATION CONTAINED HEREON IS UNCLASSIFIED EXCEPT WHERE SHOWN OTHERWISE. IT IS SUBJECT TO CHANGE AND WITHOUT WARRANTY OR ENDORSEMENT. ORGANIZATION SHOULD BE CONTACTED FOR THE LATEST VERSION.</small>		DWN: R. HUANG 17JUL2012 CHK: S. XI 17JUL2012 APVD: S. XI 17JUL2012	NAME: TE Connectivity Harrisburg, PA 17105-3608
DIMENSIONS: mm 	TOLERANCES UNLESS OTHERWISE SPECIFIED: 0 PLC ±.1 1 PLC ±0.1 2 PLC ±0.02 3 PLC ±0.005 4 PLC ±0.0005 ANGLES ±.1	PRODUCT SPEC: - APPLICATION SPEC: -	SIZE: A1 CAGE CODE: 00779 DRAWING NO: 2151720
MATERIAL: -	FINISH: -	WEIGHT: -	RESTRICTED TO: -
Customer Accessible Production Drawing		SCALE: 1:1	SHEET 4 OF 4 REV A