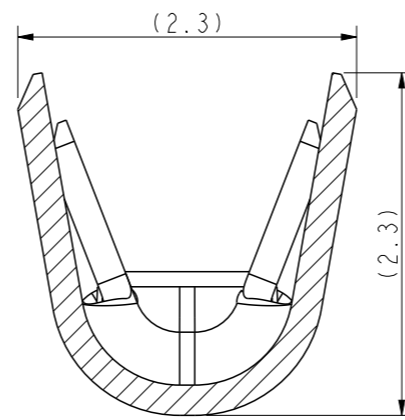
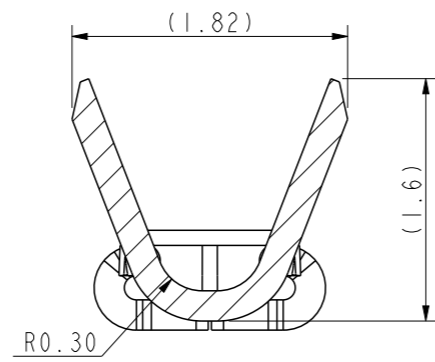
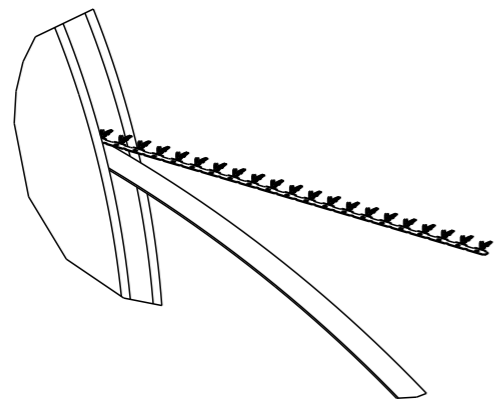
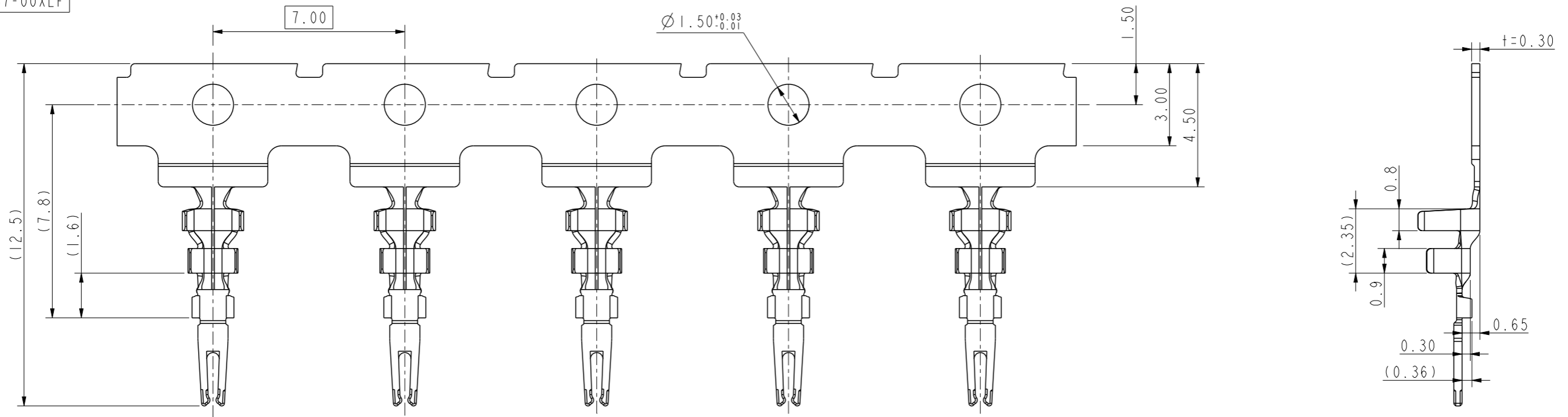
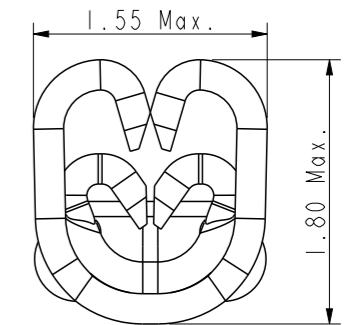
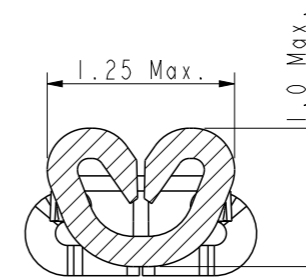


PART NO.
10150537-00XLF



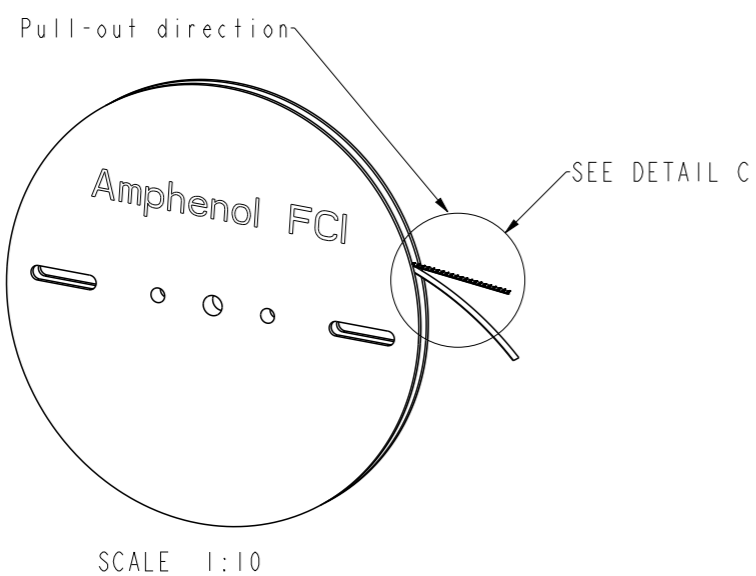
AFTER CRIMPING DIMENSIONS ONLY FOR REFERENCE



NOTE:

- MATERIAL: COPPER ALLOY, T=0.3mm.
- THE BURR IS 0.05mm MAX.
- MAX ALLOWABLE CAMBER OF STRIP IS 4mm/1000mm. AND TWIST OF STRIP IS 90°/4000mm.
- PACKAGE SPEC: GS-14-2702
- PART NUMBER CODE:
10150537-00XLF

PLATING SPEC:
1: 30u" MIN. Au OR 30GXT.
2: 110U" MIN. MATTE TIN ALL OVER.
0: 24 AWG



spec ref	dr	Nick Zhang	2019/10/22	projection	mm	size	A3	scale	1:1
tolerance std	eng	Nick Zhang	2021/04/02			ecn no	ELX-N-40277-1		
TOLERANCES UNLESS OTHERWISE SPECIFIED						product family	-	rel level	Released
surface	linear	0.X	±0.3		Cable Terminal Cross-Mate 2.0PH Series Cable Connector	dwg no	10150537C		
		0.XX	±0.15				rev	C	
		0.XXX	±0.05					-	
	angular	0°	±2°	amphenol-icc.com	cat. no.	-	Product - Customer Drw	sheet 1 of 1	