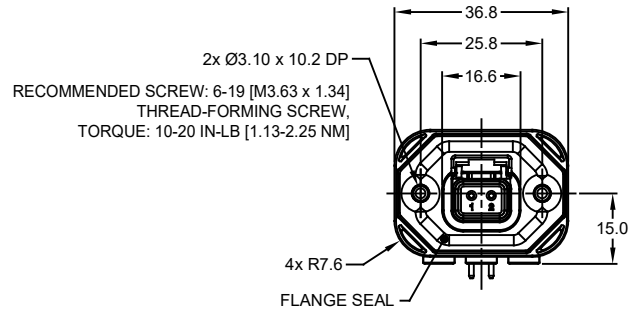
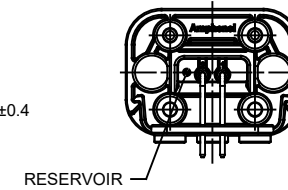
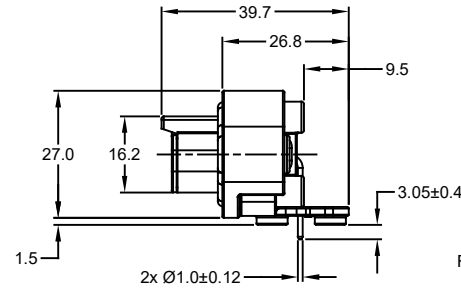


REVISIONS					
REV	ECO	DESCRIPTION	DATE	BY	APPR
A1	-	RELEASE NEW DRAWING	15JUN18	SULLEN	TOMMY
A2	-	REVISED DRAWING	10JUL20	JHEAD	DH

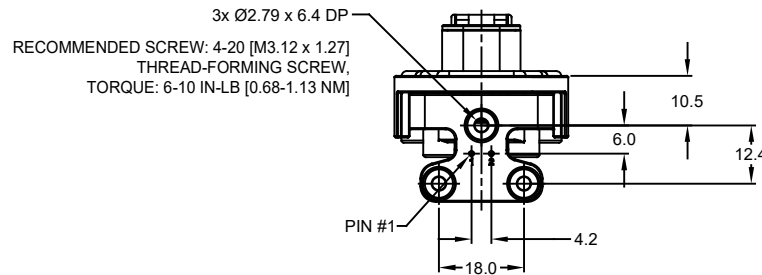
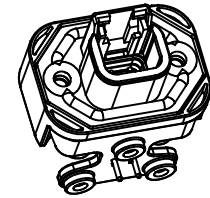


2x Ø3.10 x 10.2 DP  
 RECOMMENDED SCREW: 6-19 [M3.63 x 1.34]  
 THREAD-FORMING SCREW,  
 TORQUE: 10-20 IN-LB [1.13-2.25 NM]

4x R7.6  
 FLANGE SEAL

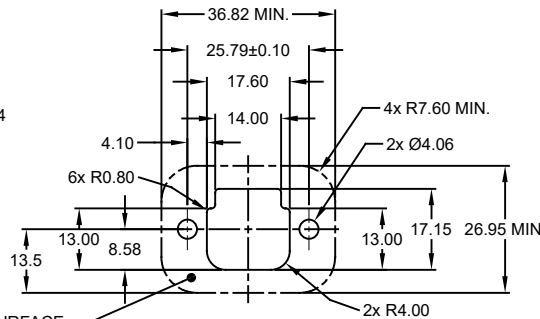


RESERVOIR



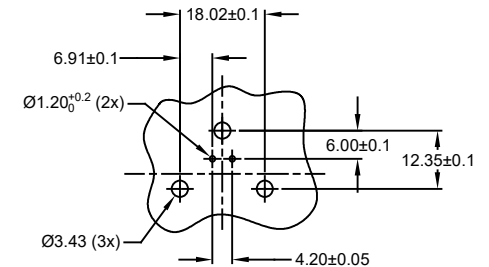
3x Ø2.79 x 6.4 DP  
 RECOMMENDED SCREW: 4-20 [M3.12 x 1.27]  
 THREAD-FORMING SCREW,  
 TORQUE: 6-10 IN-LB [0.68-1.13 NM]

PIN #1



INTERNAL SEALING SURFACE  
 FINISH TO BE  $\nabla 3.2$  OR BETTER [7.0.13]

RECOMMENDED PANEL  
 CUTOUT



RECOMMENDED PCB LAYOUT  
 VIEW FROM COMPONENTS  
 SIDE OF PCB

NOTES: UNLESS OTHERWISE SPECIFIED

- MATERIAL:  
 HOUSING: THERMOPLASTIC, GREY  
 SEAL: SILICONE RUBBER  
 CONTACT: COPPER ALLOY
- MODIFICATIONS: FLANGE; RA PCB MOUNT
- SPECIFICATIONS:  
 3.1 CURRENT RATING: 7.5 AMPS  
 3.2 OPERATING TEMPERATURE: -55°C TO +125°C  
 3.3 DIELECTRIC WITHSTANDING VOLTAGE: LESS THAN 2 MILLIAMPS CURRENT LEAKAGE @ 1500 VOLTS AC  
 3.4 INSULATION RESISTANCE: 1000 MEGOHMS MIN @ 25°C  
 3.5 MOISTURE RESISTANCE: IP67 ( MATED CONDITION )  
 3.6 MATING CYCLE DURABILITY: 100 CYCLES  
 3.7 RoHS COMPLIANT
- MATING PART: ATM06-2S\* (\* = ALL MODIFICATIONS)
- ALL DIMENSIONS ARE FOR REFERENCE USE ONLY
- POTTED CONNECTORS SPECIFIED FOR UP TO 5 P.S.I. APPLICATIONS.

ATM13-2P-BMXX VARIANTS		
CONTACT PLATING	POTTING OR NOT IN RESERVOIR	PART NUMBER
GOLD	NO POTTING	ATM13-2P-BM01
GOLD	POTTING	ATM13-2P-BM02
TIN	NO POTTING	ATM13-2P-BM03
TIN	POTTING	ATM13-2P-BM04

ATM13-2P-BMXX		PART NUMBER		DESCRIPTION		ITEM																																																																																													
<table border="1"> <thead> <tr> <th>QUANTITY</th> <th colspan="3">MATERIALS LIST</th> </tr> </thead> <tbody> <tr> <td colspan="7">UNLESS OTHERWISE SPECIFIED</td> </tr> <tr> <td colspan="7">1) All dimensions are in metric (mm).</td> </tr> <tr> <td colspan="7">2) Tolerances are as follows:</td> </tr> <tr> <td colspan="7">1 PL DEC ±0.30   Fractions ±1/64</td> </tr> <tr> <td colspan="7">2 PL DEC ±0.15   Angles ±1°</td> </tr> <tr> <td colspan="7">3 PL DEC ±0.08</td> </tr> <tr> <td colspan="7">3) Note reference = <math>\triangle</math></td> </tr> <tr> <td colspan="2">MATERIAL SPECIFICATIONS:</td> <td colspan="2">SIGNATURES</td> <td colspan="2">DATE</td> <td rowspan="4"> <p>Sine Systems - www.amphenol-sine.com            44724 Morley Drive            Clinton Township, MI 48036</p> </td> </tr> <tr> <td colspan="2">DRAWN: SULLENZHANG</td> <td colspan="2">15JUN18</td> <td colspan="2">CHECKED: ORIONLI</td> </tr> <tr> <td colspan="2">ENGINEER:</td> <td colspan="2">APPROVAL: TOMMYXIE</td> <td colspan="2">15JUN18</td> </tr> <tr> <td colspan="2">CUSTOMER:</td> <td colspan="2">THIS DRAWING IS SUPPLIED FOR INFORMATION ONLY. DESIGN FEATURES, SPECIFICATIONS AND PERFORMANCE DATA SHOWN HEREON ARE THE PROPERTY OF THE AMPHENOL CORPORATION. NO RIGHTS OF REPRODUCTION ARE IMPLIED. ALL DIMENSIONS ARE SUBJECT TO NORMAL MANUFACTURING VARIATIONS.</td> <td colspan="2">SIZE: B</td> <td>TYPE: C-</td> </tr> <tr> <td colspan="2">PROCESS SPECIFICATIONS:</td> <td colspan="2">CUSTOMER:</td> <td colspan="2">BOARDLOCK PCB MOUNT RECEPTACLE, 2 PIN, RA FLANGE, ATM SERIES</td> <td>REVISION: A2</td> </tr> <tr> <td colspan="2">NEXT ASSY:</td> <td colspan="2">SCALE: NONE</td> <td colspan="2">DWG NO: ATM13-2P-BMXX</td> <td>SHEET 1 OF 1</td> </tr> </tbody> </table>							QUANTITY	MATERIALS LIST			UNLESS OTHERWISE SPECIFIED							1) All dimensions are in metric (mm).							2) Tolerances are as follows:							1 PL DEC ±0.30   Fractions ±1/64							2 PL DEC ±0.15   Angles ±1°							3 PL DEC ±0.08							3) Note reference = $\triangle$							MATERIAL SPECIFICATIONS:		SIGNATURES		DATE		<p>Sine Systems - www.amphenol-sine.com            44724 Morley Drive            Clinton Township, MI 48036</p>	DRAWN: SULLENZHANG		15JUN18		CHECKED: ORIONLI		ENGINEER:		APPROVAL: TOMMYXIE		15JUN18		CUSTOMER:		THIS DRAWING IS SUPPLIED FOR INFORMATION ONLY. DESIGN FEATURES, SPECIFICATIONS AND PERFORMANCE DATA SHOWN HEREON ARE THE PROPERTY OF THE AMPHENOL CORPORATION. NO RIGHTS OF REPRODUCTION ARE IMPLIED. ALL DIMENSIONS ARE SUBJECT TO NORMAL MANUFACTURING VARIATIONS.		SIZE: B		TYPE: C-	PROCESS SPECIFICATIONS:		CUSTOMER:		BOARDLOCK PCB MOUNT RECEPTACLE, 2 PIN, RA FLANGE, ATM SERIES		REVISION: A2	NEXT ASSY:		SCALE: NONE		DWG NO: ATM13-2P-BMXX		SHEET 1 OF 1
QUANTITY	MATERIALS LIST																																																																																																		
UNLESS OTHERWISE SPECIFIED																																																																																																			
1) All dimensions are in metric (mm).																																																																																																			
2) Tolerances are as follows:																																																																																																			
1 PL DEC ±0.30   Fractions ±1/64																																																																																																			
2 PL DEC ±0.15   Angles ±1°																																																																																																			
3 PL DEC ±0.08																																																																																																			
3) Note reference = $\triangle$																																																																																																			
MATERIAL SPECIFICATIONS:		SIGNATURES		DATE		<p>Sine Systems - www.amphenol-sine.com            44724 Morley Drive            Clinton Township, MI 48036</p>																																																																																													
DRAWN: SULLENZHANG		15JUN18		CHECKED: ORIONLI																																																																																															
ENGINEER:		APPROVAL: TOMMYXIE		15JUN18																																																																																															
CUSTOMER:		THIS DRAWING IS SUPPLIED FOR INFORMATION ONLY. DESIGN FEATURES, SPECIFICATIONS AND PERFORMANCE DATA SHOWN HEREON ARE THE PROPERTY OF THE AMPHENOL CORPORATION. NO RIGHTS OF REPRODUCTION ARE IMPLIED. ALL DIMENSIONS ARE SUBJECT TO NORMAL MANUFACTURING VARIATIONS.		SIZE: B			TYPE: C-																																																																																												
PROCESS SPECIFICATIONS:		CUSTOMER:		BOARDLOCK PCB MOUNT RECEPTACLE, 2 PIN, RA FLANGE, ATM SERIES		REVISION: A2																																																																																													
NEXT ASSY:		SCALE: NONE		DWG NO: ATM13-2P-BMXX		SHEET 1 OF 1																																																																																													

TITLE: BOARDLOCK RECEPTACLE, 2PIN, RA FLANGE, ATM SERIES  
 DWG NO: ATM13-2P-BMXX  
 REV: A2  
 SH: 1  
 OF: 1