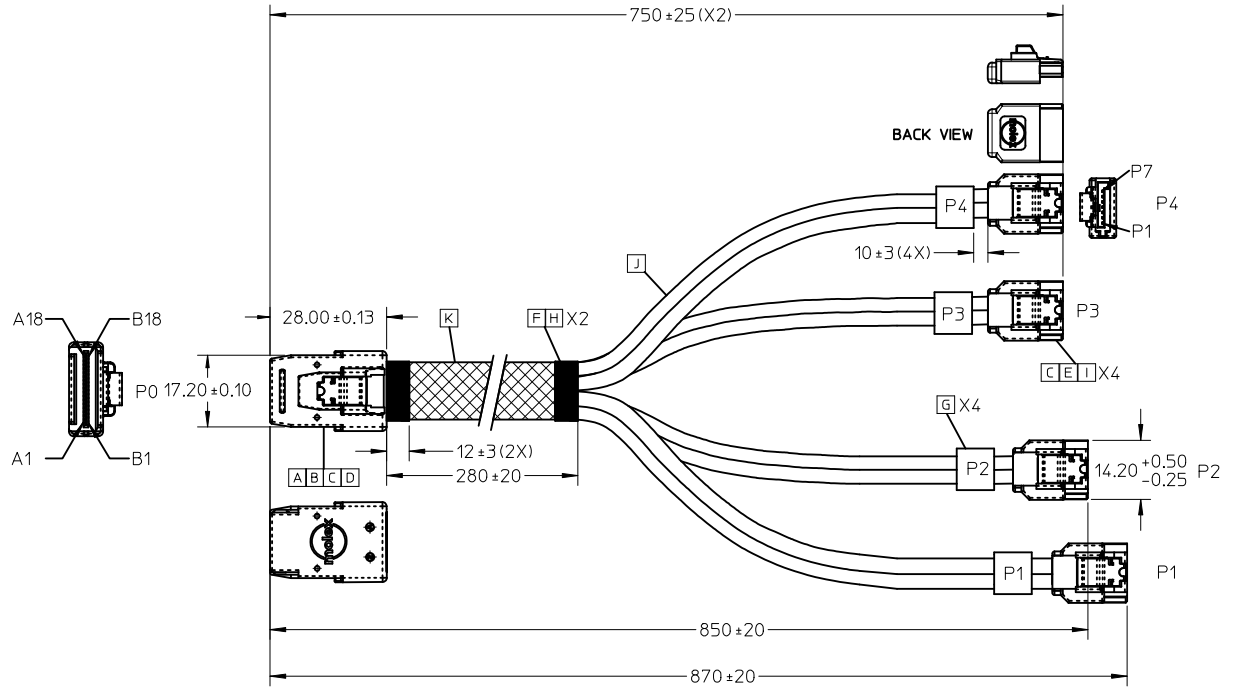


REVISIONS				
EC NO	DATE	REV	DESCRIPTION	CHANGER
NA	2010/11/17	A	INITIAL RELEASE	Ares Feng
CY11-6032	2010/12/24	B	CHANGE THE LENGTH OF P4 FROM 540±20mm TO 750±25mm.	Ares Feng

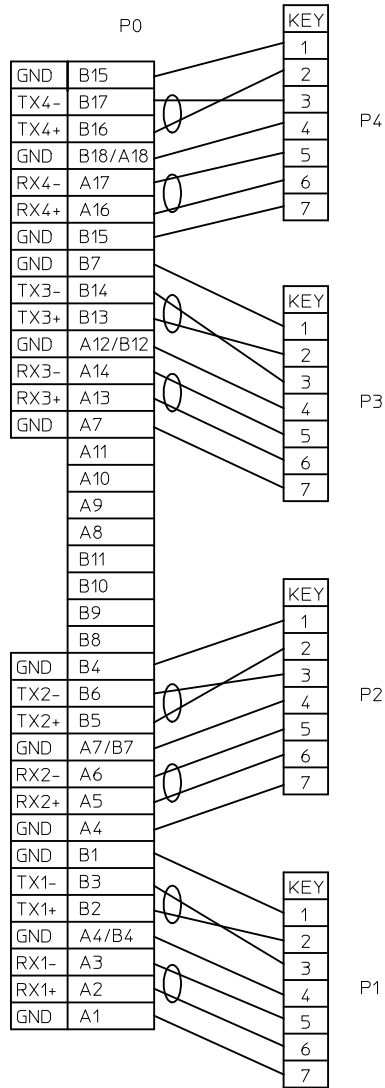
NOTES

- IPASS INNERMOLD WITH PE RESIN
IPASS OUTMOLD WITH PBT RESIN
SATA INNER MOLD WITH PE RESIN
SATA OUTER MOLD WITH PVC RESIN
- ELECTRICAL PERFORMANCE REFER TO BELOW:
 - INSULATION RESISTANCE:10M OHMS.
 - CONDUCTIVE RESISTANCE:5 OHMS MAX.
 - VOLTAGE PRESSURE PROOF TEST:400V DC/0.01 SEC.
 - MATED CONNECTOR IMPEDANCE:100 OHMS± 15% (RISETIME 70ps @ 20%-80%)
 - CABLE ABSOLUTE IMPEDANCE:100 OHMS± 15% (RISETIME 70ps @ 20%-80%)
 - COMMON MODE IMPEDANCE:32.5± 7.5 OHMS (RISETIME 70ps @ 20%-80%)
 - INSERTION LOSS:8dB MAX (10MHz~4.5GHz).
 - MAXIMUM NEAR-END CROSSTALK:-26dB MAX (10MHz~4.5GHz)
 - MATED CONNECTOR PAIR MATCHING:5 OHMS
 - INTRA-PAIR SKEW:10PS MAX.
- FOR P0 SIDE ASS'Y PLEASE REFER TO E-74562-010 FOR DETAIL
- THIS PRODUCT MEETS THE RESTRICTION OF HAZARDOUS SUBSTANCES IN ELECTRICAL AND ELECTRONIC EQUIPMENT (RoHS) DIRECTIVE (2002/95/EC).
- WORKING TEMPERATURE:-40°C TO 85°C.
- MINIMUM END RADIUS:20MM



IPASS IS A TRADEMARK OF MOLEX

ENTER DESCRIPTION EC NO: USY2011-0509 DRWN:ZYYU 2011/01/14 CHKD:ARES FENG 2011/01/14 APPR:CLAN01 2011/01/14	QUALITY SYMBOLS	GENERAL TOLERANCES (UNLESS SPECIFIED)	DIMENSION STYLE	SCALE	DESIGN UNITS	THIRD ANGLE PROJECTION	
	▽=0 ▽=0	mm INCH 4 PLACES ± --- ± --- 3 PLACES ± --- ± --- 2 PLACES ± 0.13 ± --- 1 PLACE ± 0.25 ± --- ANGULAR ± 1/2°	MM ONLY	---	METRIC		
		DRAFT WHERE APPLICABLE MUST REMAIN WITHIN DIMENSIONS	DRAWN BY DATE	TITLE			
			ZYYU 2010/12/13	36CKT IPASS STR -(4)SATA, SAS 2.0			
		APPROVED BY DATE	MATERIAL NO.				
		CLAN01 2010/12/14	1110961052				
			DOCUMENT NO.		SHEET NO.		
			SD-111096-009		1 OF 2		
			THIS DRAWING CONTAINS INFORMATION THAT IS PROPRIETARY TO MOLEX INCORPORATED AND SHOULD NOT BE USED WITHOUT WRITTEN PERMISSION				



NOTE:
1. ALL SIGNAL GROUNDS ARE BUSSED IN PCB.

IPASS™ IS A TRADEMARK OF MOLEX.

ITEM	DESCRIPTION	L (mm)	QTY.
K	Braid sleeving	280REF	1
J	2x28AWG-S:SHLD:PVC:RD:-40C~85C:S-ATA	3220REF	
I	BLACK PVC	A/R	
H	BLCK TAPE	A/R	2
G	LABEL		4
F	HST F 12MM 125C (UL) BLK	A/R	2
E	SINGLE ATA CONN.		4
D	36CKT PCB		1
C	PE MATERIAL	A/R	
B	PBT	A/R	
A	LATCH		1

ENTER DESCRIPTION EC NO: USY2011-0509 DRWN: ZYYU 2011/01/14 CHKD: ARES FENG 2011/01/14 APPR: CLAN01 2011/01/14 B	DESCRIPTION REV	QUALITY SYMBOLS ▽=0 ▽=0	GENERAL TOLERANCES (UNLESS SPECIFIED) mm INCH 4 PLACES ± --- ± --- 3 PLACES ± --- ± --- 2 PLACES ± 0.13 ± --- 1 PLACE ± 0.25 ± --- ANGULAR ± 1/2°	DIMENSION STYLE MM ONLY DRAWN BY DATE ZYYU 2010/12/13 CHECKED BY DATE ARES FENG 2010/12/13 APPROVED BY DATE CLAN01 2010/12/14	SCALE --- DESIGN UNITS METRIC THIRD ANGLE PROJECTION	TITLE 36CKT IPASS STR -(4)SATA, SAS 2.0	MOLEX INCORPORATED
		DRAFT WHERE APPLICABLE MUST REMAIN WITHIN DIMENSIONS	MATERIAL NO. 1110961052	DOCUMENT NO. SD-111096-009	SHEET NO. 2 OF 2		
		THIS DRAWING CONTAINS INFORMATION THAT IS PROPRIETARY TO MOLEX INCORPORATED AND SHOULD NOT BE USED WITHOUT WRITTEN PERMISSION					