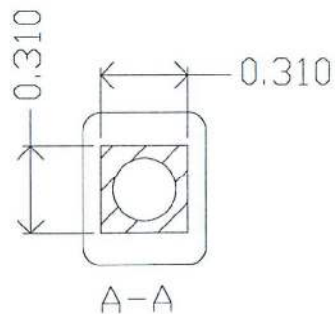
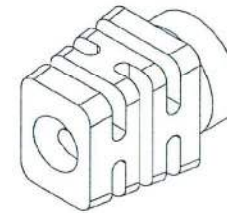
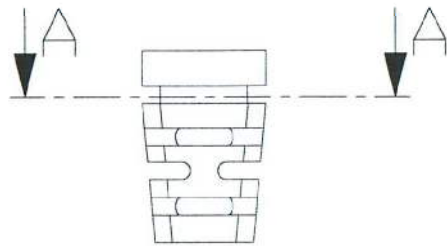
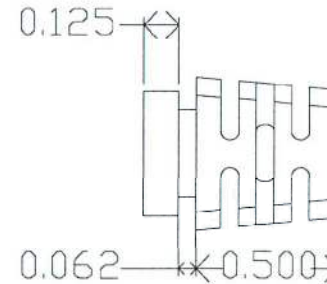
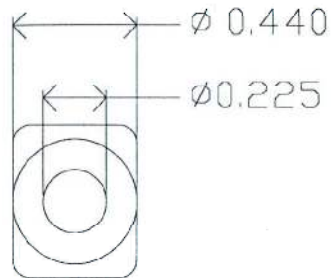


REV. NO.		REVISIONS	DATE	APPROVED
ZONE	REV.	DESCRIPTION		



MOLD MATERIAL: ISC P/N: 5000214, PVC, M1472, Blk, RoHS

ISC ENGINEERING
CONTROLLED COPY
 Rich Fierro 09/06/2016

Dimensions are subject to change.
 PROPRIETARY AND CONFIDENTIAL
 THE INFORMATION CONTAINED IN THIS DRAWING IS THE SOLE PROPERTY OF ISC ENGINEERING. ANY REPRODUCTION IN PART OR AS A WHOLE WITHOUT THE WRITTEN PERMISSION OF ISC ENGINEERING IS PROHIBITED.

DIMENSIONS ARE IN INCHES		NAME	DATE	ISC Engineering 4351 Schaefer Ave, Chino, CA 91710 Ph: 909-596-3315 Fax: 909-596-3335 www.iscengineering.com www.OvermoldTooling.com
TOLERANCES:		DRAWN	R. FIERRO 04/20/04	
FRACTIONAL ±		CHECKED		
ANGULAR: MACH ± BEND ±		ENG APPR.		
TWO PLACE DECIMAL ±		MFG APPR.		
THREE PLACE DECIMAL ±		Q.A.		
MATERIAL ---		COMMENTS:		Rectangular Strain Relief
FINISH ---				1465080-225-B-310x310-440-0
NEXT ASSY USED ON	APPLICATION	DO NOT SCALE DRAWING		SIZE DWG. NO. 1467248 REV. A
				SCALE: 2:1 WEIGHT: SHEET 1 OF 1