

GLF71325

Low R_{ON} I_Q Smart™ Power Switch with Slew Rate Control

DESCRIPTION

The evaluation board EV001 features the GLF71325 ultra-efficient slew rate controlled I_Q Smart™ load switch suitable for applications that control high current power rails in mobile computing and data storage devices.

The GLF71325 is the fully integrated I_Q Smart™ load switch with a fixed slew rate control to limit the inrush current and minimize input voltage droop, and offer an ultra-low R_{ON} in 0.97mm x 1.47mm x 0.50mm WLCSP

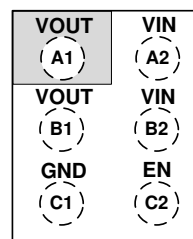
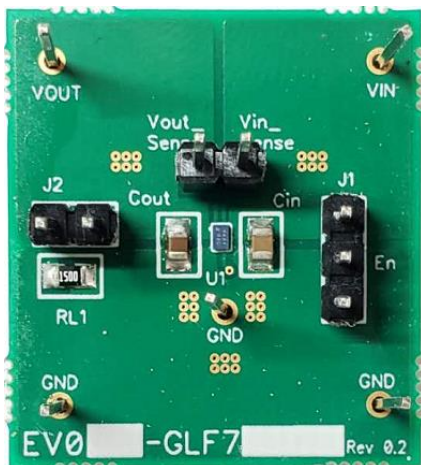
GLF71325 FEATURES

- Wide Input Range 1.1V to 5.5V
- Low R_{ON} = 18m Ω Typ at 3.3V_{IN}
- Up to 4A Continuous Current
- Ultra-Low I_Q : 1nA Typ at 3.3V_{IN}
- Ultra-Low I_{SD} : 16nA Typ at 3.3V_{IN}
- 2.2ms Rise Time at 3.3V_{IN}
- Internal EN Pull-Down Resistor
- Integrated Output Discharge Switch
- 0.97mm x 1.47mm Wafer Level Chip Scale Package

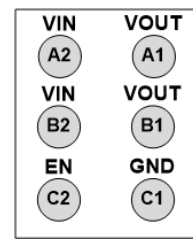
PRODUCT TABLE

Eval Board Ordering Info	Part Number	Top Mark	R_{ON} (Typ.) @ 3.3V _{in}	Output Discharge	EN Activity
EV001-GLF71325	GLF71325	HL	15 m Ω	80 Ω	High

EVALUATION BOARD & DEVICE PACKAGE



TOP VIEW



BOTTOM VIEW

Pin #	Name	Description
A1, B1	Vout	Switch Output
A2, B2	V _{IN}	Switch Input. Supply Voltage for IC
C1	GND	Ground
C2	EN	Enable to control the switch