

**MICRO SWITCH**

A DIVISION OF HONEYWELL-HONEYWELL REGULATOR COMPANY,  
BREEPORT, ILLINOIS  
FED. MFR. CODE 91929

**SWITCH-ENCLOSED**

(M) 105 ML1  
ISSUE 5

105 ML1

M

DRAWING NUMBER

ISSUE  
X  
10

REPLACES

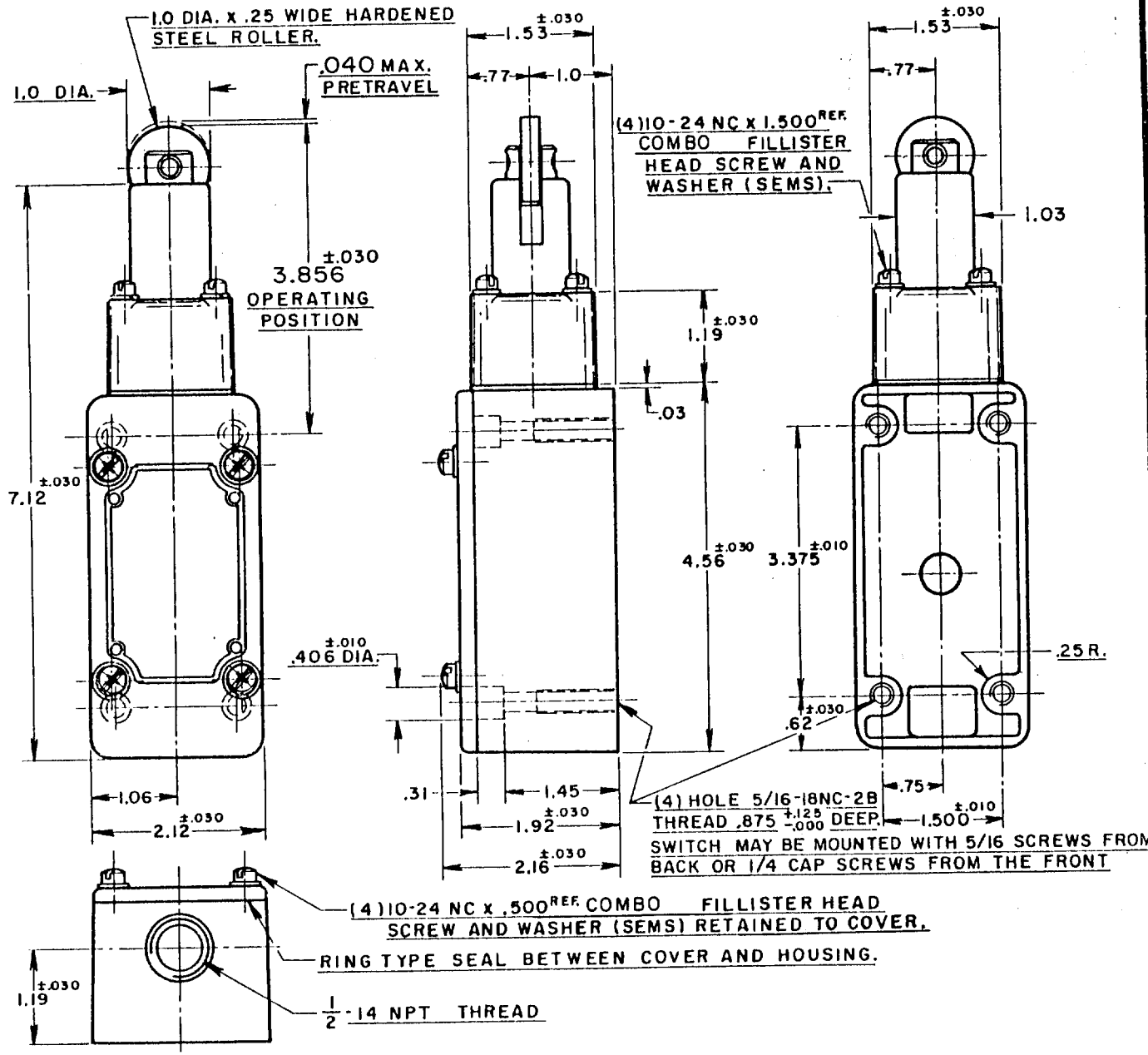
RELEASE NO.

CHECK

REVISIONS

A	CO11247	O. M. W.	4 MAR 58
B	CO12789	M. B. F.	13 MAY 58
C	CO28064	M B S	25 JUNE 69
D	CO55051-B	J A P	17 DEC 84
E	CO74287	G J W	22 APR 93

J. W. M. 10 MAR 58  
G. C. H. 12 MAR 58



NOTE -

- 1-ROLLER ASSEMBLY MAY BE RE-ASSEMBLED 90° FROM POSITION SHOWN.
- 2-IT IS ESSENTIAL TO PREVENT ENTRANCE OF HARMFUL AGENTS THRU THE CONDUIT OPENING TO OBTAIN THE FULL BENEFIT OF THE SEALED CONSTRUCTION PROVIDED IN THIS UNIT.

THIS DRAWING COVERS A PROPRIETARY ITEM AND IS THE PROPERTY OF MICRO SWITCH, A DIVISION OF HONEYWELL. THIS DRAWING IS NOT TO BE COPIED OR USED WITHOUT THE APPROVAL OF MICRO SWITCH.

CHARACTERISTICS	
OPERATING FORCE	--- 6 LBS. APPROX.
RELEASE FORCE	--- 4 LBS. APPROX.
DIFFERENTIAL TRAVEL	--- .020 MAX.
OVERTRAVEL	--- .500 MIN.
FREE PLAY	--- .010 MAX.
SWITCH-BASIC REPLACEMENT	--- 1MNI

ELECTRICAL DATA	
CONTACT ARRANGEMENT	BREAK DISTANCE
TWO CIRCUIT DOUBLE THROW DOUBLE BREAK	
10A-120, 240, 480, OR 600 VAC 1/2 HP-120 VAC; 1 HP-240 VAC 0.8 A-115 VDC; 0.4 A-230 VDC PILOT DUTY; 600 VAC MAX	

SCALE 1/2 TO 1	
DO NOT SCALE PRINT	
UNLESS OTHERWISE SPECIFIED	
DIMENSIONS ARE IN INCHES	
TOLERANCES ARE:	
ONE PLACE	(.0) ±.030
TWO PLACE	(.00) ±.015
THREE PLACE	(.000) ±.008
ANGLES	±
WEIGHT	

FO-50378  
DRAWN  
O. M. W. 4 MAR 58