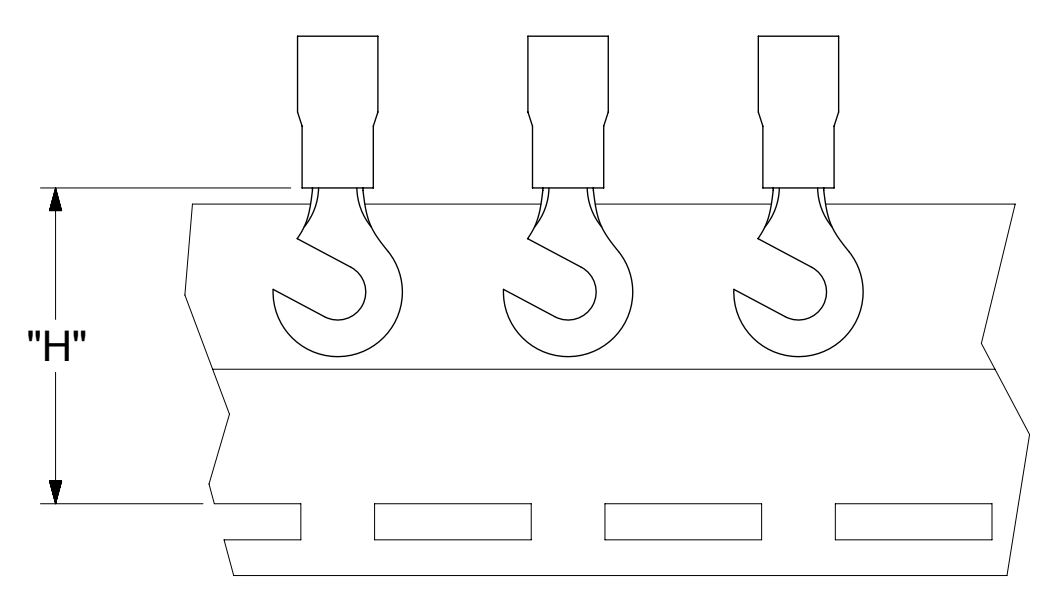
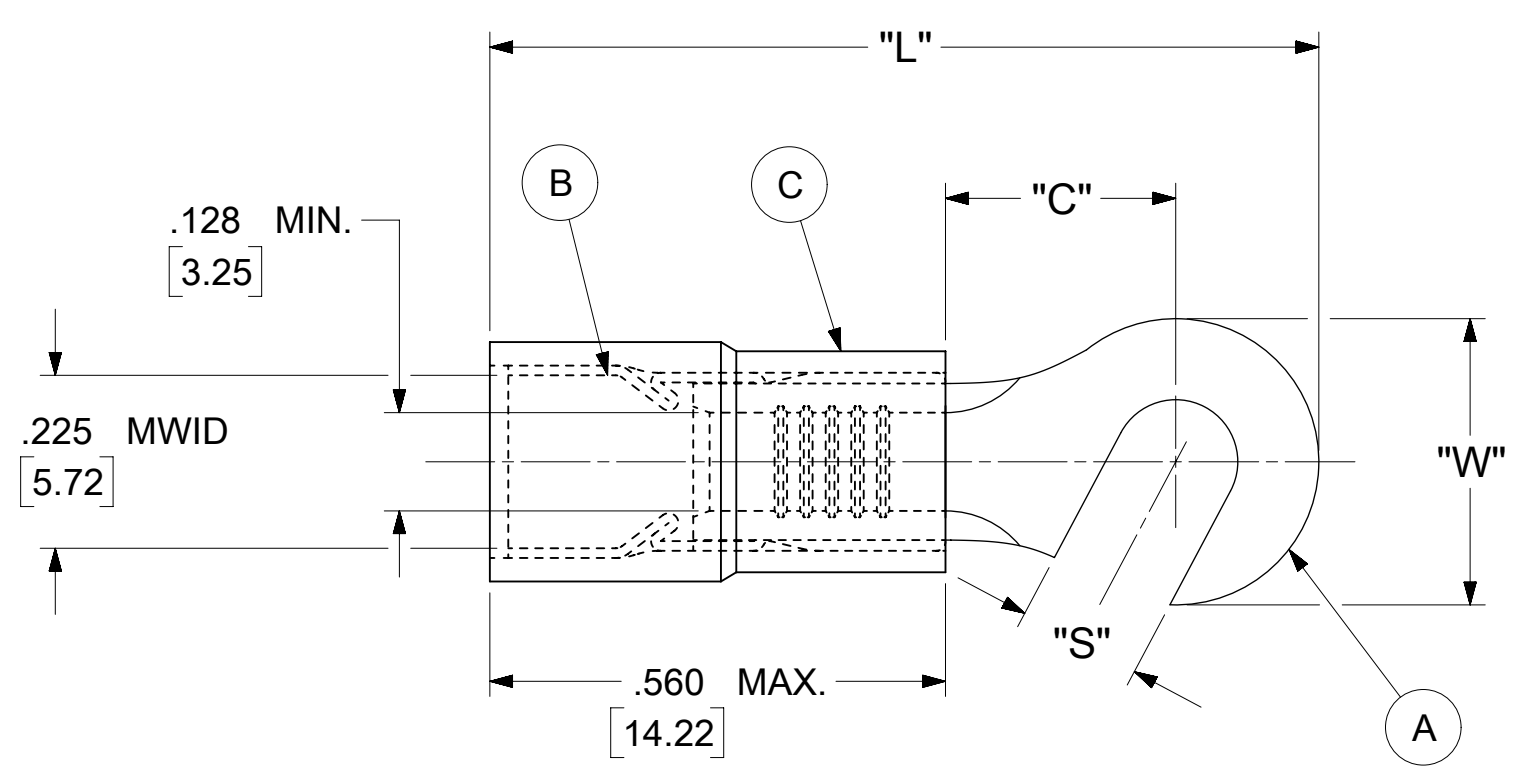


LOOSE PIECE		TAPE MOUNTED		SPECIFICATIONS					
MATERIAL NUMBER	ENGINEERING NUMBER	MATERIAL NUMBER	ENGINEERING NUMBER	STUD SIZE	"S" ±.005 [0.13]	"W" ±.010 [0.25]	"C" MIN.	"L" MAX.	"H"
191830019	C-811-10	191830020	C-811-10T	10	.198 [5.03]	.372 [9.45]	.303 [7.70]	1.081 [27.46]	.980 [24.89]



PARTS ON TAPE

NOTES:

- MATERIAL:
 - (A). TERMINAL: COPPER (STOCK THICKNESS .040±.001 [1.02])
 - PLATING: ELECTRO-TIN (.0003 MIN.)
 - (B). TIN-PLATED BRASS FUNNEL FERRULE
 - (C). INSULATION: NYLON (COLOR CODED YELLOW)
- MWID: MAXIMUM WIRE INSULATION DIAMETER
- WIRE SIZE: 12 -10 AWG
4.0 -6.0 MM²
- "UL" LISTING #E32244
"CSA" LISTING #18689
- ALL DIMENSIONS IN INCHES/[MM].
- PARTS ARE ROHS COMPLIANT.
- DIMS. SHOWN ARE FOR REFERENCE ONLY.

SYMBOLS	THIS DRAWING CONTAINS INFORMATION THAT IS PROPRIETARY TO MOLEX ELECTRONIC TECHNOLOGIES, LLC AND SHOULD NOT BE USED WITHOUT WRITTEN PERMISSION				
	DIMENSION UNITS	SCALE		CURRENT REV DESC: MIGRATION TO ECTR/NX	
∇ = 0	INCH/MM	NTS		EC NO: 621540 DRWN: ABENJAMINLW 2019/07/24 CHK'D: GROJAS01 2019/07/29 APPR: JMACNEIL 2019/08/05	
∇ = 0	GENERAL TOLERANCES (UNLESS SPECIFIED)				
∇ = 0		MM	INCH	INITIAL REVISION: DRWN: JJ 1984/11/12 APPR: JMACNEIL 2019/08/05	
∇ = 0	4 PLACES	± ---	± ---		
∇ = 0	3 PLACES	± ---	± .005	1984/11/12 2019/08/05	
∇ = 0	2 PLACES	± 0.13	± .01		
∇ = 0	1 PLACE	± 0.25	± ---	SERIES 19183	
∇ = 0	0 PLACES	± ---	± ---		
∇ = 0	ANGULAR TOL	± 0.5 °		THIRD ANGLE PROJECTION DRAWING C-SIZE	
∇ = 0	DRAFT WHERE APPLICABLE MUST REMAIN WITHIN DIMENSIONS				
∇ = 0	DOCUMENT NUMBER		DOC TYPE	DOC PART	REVISION
191830013		PSD	000	A	
MATERIAL NUMBER		CUSTOMER		SHEET NUMBER	
SEE TABLE		GENERAL MARKET		1 OF 1	