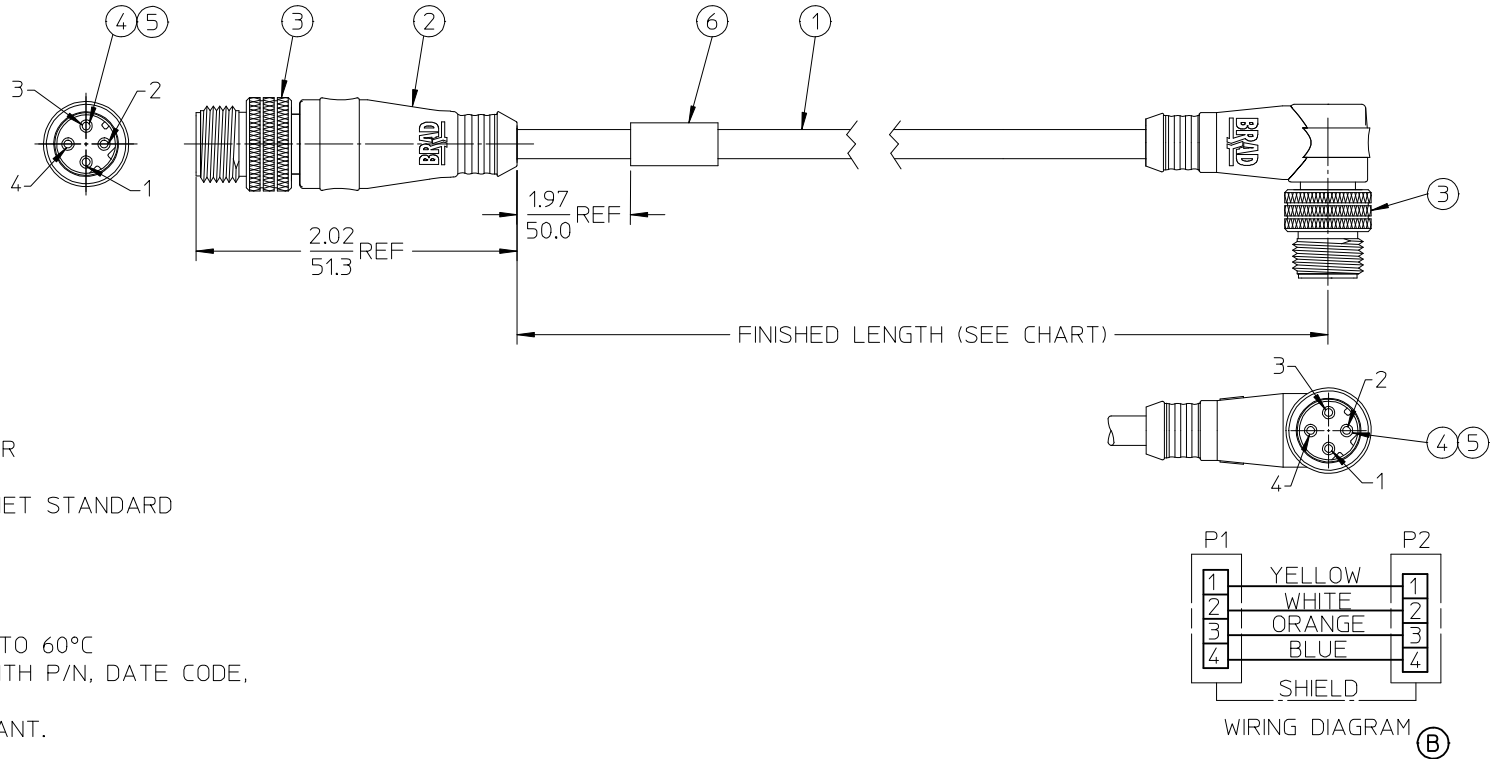


10	9	8	7	6	5	4	3	2
PART NUMBER	ENGINEERING NO.	LENGTH ± TOLERANCE						
1201080201	E11A06211M020	6' 6" +2.19"/-0" [2M +55.6/-0 mm]						



NOTES:

- 1) MATERIAL: SEE TABLE
- 2) FINISHES: SEE TABLE
- 3) CABLE: #22/4 SHIELDED PUR
- 4) ELECTRICAL DATA:
ACCORDING TO CAT5e ETHERNET STANDARD
MAX. VOLTAGE: 30V
MAX. CURRENT 1.5A
- 5) ENVIRONMENTAL:
PROTECTION IP67
TEMPERATURE RANGE: -20°C TO 60°C
- 6) WRAP LABEL IS MARKED WITH P/N, DATE CODE,
VOLTAGE & AMPERAGE.
- 7) ASSEMBLY IS RoHS COMPLIANT.

6	1	LABEL	PLASTIC FILM	BLACK/YELLOW
5	2	INSERT	PUR	BLACK
4	8	PIN CONTACT	COPPER ALLOY	GOLD PLATED
3	2	M12 COUPLING NUT	BRASS	NICKEL
2	2	OVERMOLD	PUR	BLACK
1	1	ETHERNET CABLE-CAT5E	PUR JACKET	GREEN
ITEM	QTY.	DESCRIPTION	MATERIAL	FINISH

UPDATE SCHEMATIC EC NO: IPG2013-1629 DRAWN: BRUPERT 2013/04/17 CHKD: JFMURPHY APPR: JFMURPHY 2013/05/29	QUALITY SYMBOLS	GENERAL TOLERANCES (UNLESS SPECIFIED)	DIMENSION STYLE	SCALE	DESIGN UNITS	THIRD ANGLE PROJECTION
	▼=0 ▽=0	mm INCH 4 PLACES ± --- ± --- 3 PLACES ± --- ± --- 2 PLACES ± 0.05 ± --- 1 PLACE ± 0.10 ± --- ANGULAR ± .5 °	MM ONLY	1:50	METRIC	MIC 4P MM/MM-ST/90 D-CODED
		DRAFT WHERE APPLICABLE MUST REMAIN WITHIN DIMENSIONS	DRAWN BY DATE BRUPERT 2011/11/28 CHECKED BY DATE			
			APPROVED BY DATE JFMURPHY 2012/04/17		MOLEX INCORPORATED DOCUMENT NO. SD-120108-043	SHEET NO. 1 OF 1
			MATERIAL NO. SEE CHART			
			SIZE B THIS DRAWING CONTAINS INFORMATION THAT IS PROPRIETARY TO MOLEX INCORPORATED AND SHOULD NOT BE USED WITHOUT WRITTEN PERMISSION			

10 9 8 7 6 5 4 3 2 1

M12 4 POLE MALE

VIEW FROM THE WIRES SIDE

Pin	Wire color
1	YELLOW
2	WHITE
3	ORANGE
4	BLUE

E	1	1	A	0	6	2	1	1	X	X	X	X	X
---	---	---	---	---	---	---	---	---	---	---	---	---	---

First and Second Connector: 1-M12 Threaded 4 Pole D-code
 Insert: A=4 Pole
 HEAD TYPE: 062 Plugs male straight / plugs male 90
 Cable type: 2x2x22AWG PUR, Green, Shield
 LENGTH UNIT: C-cm, M-m, K-km, F-feet
 LENGTH: Example: 020 - 2M, 060 - 6M, 100 - 10M
 OPTIONS: D- Decoupled (for Shielded version only), H- 2x ID CARRIER

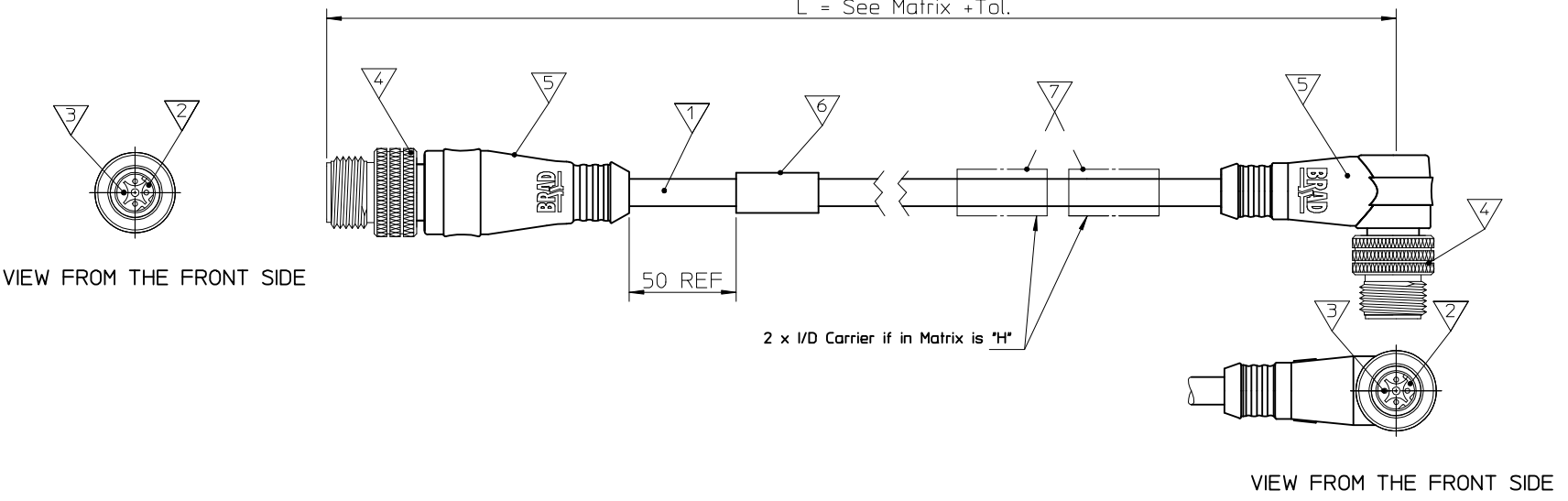
Table of length tolerances

Over	Up to and including	Tolerance (+)
0	305	+19
305	915	+45
915	1830	+56
1830	3660	+89
3660	7320	+165
7320	14640	+317
14640	30500	+610
30500	>	2% of length

M12 4 POLE MALE

VIEW FROM THE WIRES SIDE

Pin	Wire color
1	YELLOW
2	WHITE
3	ORANGE
4	BLUE



Bill of Materials

ITEM	QTY.	DESCRIPTION	MATERIAL	FINISH
7	-	ID CARRIER	SEE MATRIX	SEE MATRIX
6	1	LABEL	-	YELLOW
5	-	MOLDING MATERIAL	TPU	BLACK
4	2	COUPLING NUT MALE M12	CuZn38Pb3	Cu/Ni3
3	8	CONTACT MALE	CuNi2Si	Cu/Ni2
2	2	INSERT M12 4P MALE DC	PUR	BLACK
1	-	CABLE 4x0.34 mm ²	PUR	GREEN

ORIGINAL RELEASE EC NO: IPG2016-0383 DRW:AKONDRAC IUK 2015/09/11 CHK:D:MMAJGAT 2015/09/11 APPR:MIWASIECZKO 2015/09/29	QUALITY SYMBOLS ▽=0 ◻=0	GENERAL TOLERANCES (UNLESS SPECIFIED)		DIMENSION STYLE MM ONLY		SCALE ---	DESIGN UNITS METRIC	THIRD ANGLE PROJECTION
		4 PLACES ± --- ± --- 3 PLACES ± --- ± --- 2 PLACES ± --- ± --- 1 PLACE ± --- ± --- 0 PLACE ± --- ± ---	mm INCH	DRAWN BY AKONDRAC IUK	DATE 2015/09/11	TITLE MIC 4P M/MP ST/90 D-CODED XM		
		ANGULAR ± 1 °		CHECKED BY MMAJGAT	DATE 2015/09/11	molex		
		DRAFT WHERE APPLICABLE MUST REMAIN WITHIN DIMENSIONS		APPROVED BY MIWASIECZKO	DATE 2015/09/29	MATERIAL NO. SEE MATRIX	DOCUMENT NO. SD-120108-090	
A	REV	THIS DRAWING CONTAINS INFORMATION THAT IS PROPRIETARY TO MOLEX INCORPORATED AND SHOULD NOT BE USED WITHOUT WRITTEN PERMISSION				SIZE A3	SHEET NO. 1 OF 1	

9 8 7 6 5 4 3 2 1