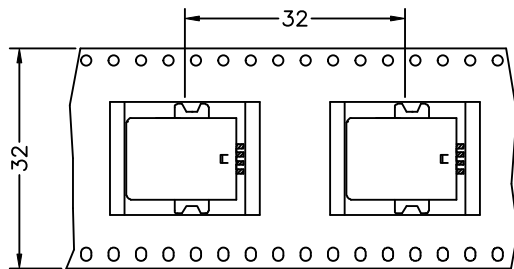
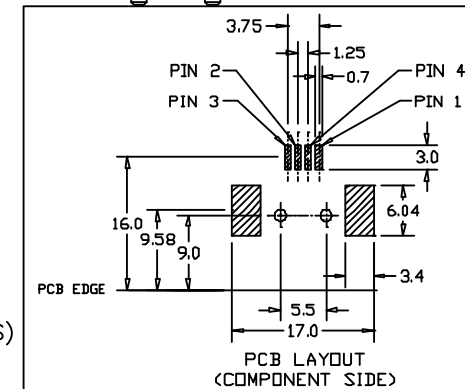
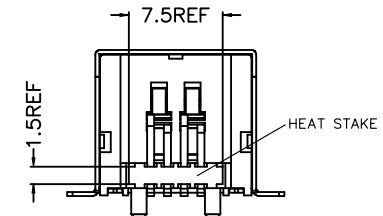
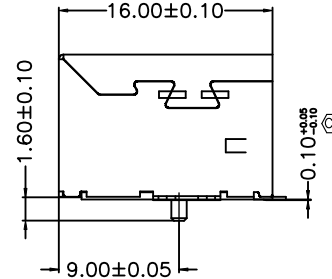
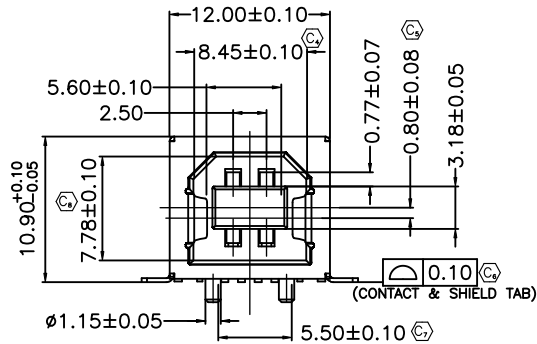
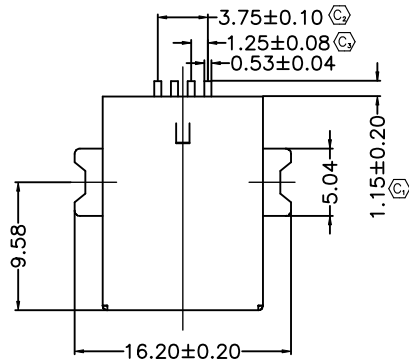


REVISION V

DO NOT SCALE FROM THIS PRINT



USER DIRECTION OF UNREELING —
POCKET NOT DETAILED



USB-B-S-X-X-SM-X-XX

TYPE
-B

CONFIGURATION
-S: SINGLE

PLATING

-F: 1u" FLASH GOLD IN CONTACT AREA,
MATTE TIN ON TAIL
-S: 30u" SELECTIVE GOLD IN CONTACT AREA,
MATTE TIN ON TAIL

PACKAGING

BLANK: TRAY (SEE NOTES 4 & 5)
-TR: TAPE & REEL (SEE NOTES 5 & 6)
-FR: FULL REEL QTY TAPE & REEL (SEE NOTES 5 & 6)

E & I OPTIONS

-R: ROHS COMPLIANT-LEAD FREE WITH HIGH TEMP INSULATOR

RA TERMINATION

-SM: SURFACE MOUNT

COLOR

-B: BLACK
-W: WHITE

NOTES:

1. Ⓢ REPRESENTS CRITICAL DIMENSION.
2. NOTE DELETED.
3. SHIELD PLATING TO HAVE A SLIGHT MATTE APPEARANCE.
4. TRAYS ARE STANDARD PACKAGING.
5. ORDERS WILL BE PACKAGED ACCORDING TO THE SAMTEC PACKAGING EFFICIENCY STANDARDS (SPES) FOUND ON WWW.SAMTEC.COM.
6. ATTACH LABEL TO EACH REEL.

UNLESS OTHERWISE SPECIFIED, DIMENSIONS ARE MILLIMETERS. TOLERANCES ARE:
DECIMALS ANGLES

PROPRIETARY NOTE
THIS DOCUMENT CONTAINS INFORMATION CONFIDENTIAL AND PROPRIETARY TO SAMTEC INC. AND SHALL NOT BE REPRODUCED OR TRANSFERRED TO OTHER DOCUMENTS OR DISCLOSED TO OTHERS OR USED FOR ANY PURPOSE OTHER THAN THAT FOR WHICH IT WAS OBTAINED WITHOUT THE EXPRESSED WRITTEN CONSENT OF SAMTEC INC.

DO NOT SCALE DRAWING
INSULATOR: PAST (RATED UL94V-0)
CONTACT: PHOS BRONZE
SHELL: STEEL/NICKEL PLATED

SHEET SCALE: 1:2

MAX FLASH ALLOWED: .051
MAX GATE RESTIGE: .051
F:\DWG\EXISPROD\ASSEMBLY\0\USB\

samtec

520 PARK EAST BLVD. NEW ALBANY, IN 47150
(812) 944-6733 P.O. BOX 1147 TWX: 810-540-4085

DESCRIPTION: USB TYPE B RIGHT ANGLE SURFACE MOUNT

DWG. NO. USB-B-S-X-X-SM-X-XX

BY: J. Riley 02/06/04 SHEET 1 OF 1

CODE: 55322