

ITEM	PART#	DESCRIPTION	QTY	UOM
A	701070005	SL WtW Conn SR WO/MtgE Opt A 6Ckt	1	PC
B	16020107	SL Male Crp Term 22-24awg Tin Reel	6	PC
C	--	PAPER PRINTED PAPER WHITE	1	PC

FROM	TO	DESCRIPTION	COLOR
A1	--	1X22AWG DISC MPPE BK UL11028	BLACK
A2	--	1X22AWG DISC MPPE BK UL11028	BLACK
A3	--	1X22AWG DISC MPPE BK UL11028	BLACK
A4	--	1X22AWG DISC MPPE BK UL11028	BLACK
A5	--	1X22AWG DISC MPPE BK UL11028	BLACK
A6	--	1X22AWG DISC MPPE BK UL11028	BLACK

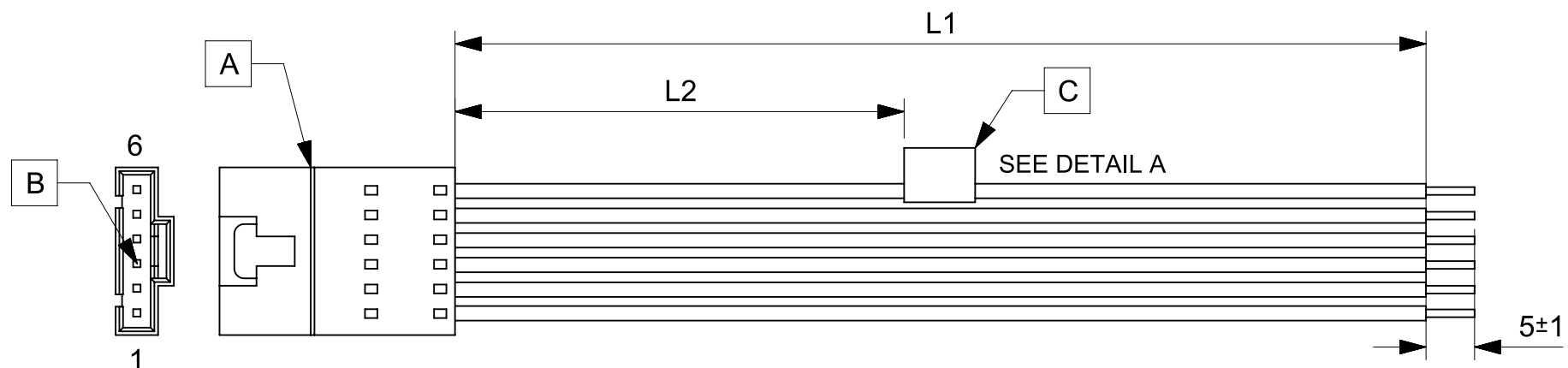


TABLE			
PART NUMBER	L1	L2	TITLE
2162731060	50±3	13 REF	SL POSITIVE LOCK P-S 6CKT 50MM Sn
2162731061	100±5	38 REF	SL POSITIVE LOCK P-S 6CKT 100MM Sn
2162731062	150±8	63 REF	SL POSITIVE LOCK P-S 6CKT 150MM Sn
2162731063	300±10	138 REF	SL POSITIVE LOCK P-S 6CKT 300MM Sn
2162731064	600±10	288 REF	SL POSITIVE LOCK P-S 6CKT 600MM Sn

- NOTES**
- Connector view shown is from mating side.
 - Free ends must be stripped, twisted & tinned. The length of tinning is 5±1mm. Tinning dia must be 0.9mm Max.
 - Label text must be 2mm max. in height with Arial font.
 - Label must be wrapped in Flag type on a single cable.

MOLEX P/N
MOLEX
BATCH WK/YR
DETAIL A

REVISION			
DATE	REV	DESCRIPTION	CHANGER
2020/05/05	A	INITIAL RELEASE	ARAJU

FUNCTIONAL SYMBOLS $\frac{F}{A} = 0$ $\frac{F}{E} = 0$ $\frac{F}{P} = 0$	DIMENSION UNITS: mm SCALE: NTS		CURRENT REV DESC:		
	GENERAL TOLERANCES (UNLESS SPECIFIED)		EC NO: 642836		
	ANGULAR TOL ± °		DRWN: ARAJU 2020/05/05		
	4 PLACES ±		CHK'D: RDESAI01 2020/08/05		
DIVISIONAL SYMBOLS	3 PLACES ±		APPR: RDESAI01 2020/08/05		
	2 PLACES ±		INITIAL REVISION:		
	1 PLACE ±		DRWN: ARAJU 2020/05/05		
	0 PLACES ±		APPR: RDESAI01 2020/08/05		
DRAFT WHERE APPLICABLE MUST REMAIN WITHIN DIMENSIONS		THIRD ANGLE PROJECTION	DRAWING: A4-SIZE	SERIES: 216273	MATERIAL NUMBER: SEE TABLE
		CUSTOMER: GENERAL MARKET		SHEET NUMBER: 1 OF 1	

SEE TABLE

PRODUCT CUSTOMER DRAWING

DOCUMENT NUMBER	DOC TYPE	DOC PART	REVISION
2162731060	PSD	000	A