

SAW Filter 1030.0MHz
Part No: MP01226

Model: TA0690A
Rev No: 4

A. MAXIMUM RATING:

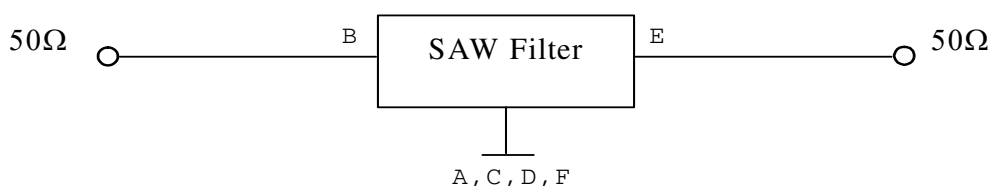
1. Input Power Level: 20dBm
2. DC Voltage: 3V
3. Operating Temperature: -40°C to +85°C
4. Storage Temperature: -55°C to +95°C

B. ELECTRICAL CHARACTERISTICS:

Item	Unit	Min.	Typ.	Max.	Note
Center Frequency Fc	MHz	-	1030	-	-
Insertion Loss (1015 ~ 1045MHz) IL	dB	-	2.4	3.0	-
Amplitude Ripple (1025 ~ 1035MHz)	dB	-	0.1	1.0	-
VSWR (1015 ~ 1045MHz)		-	1.6	2.1	-
Attenuation (Reference level from 0dB)					
D.C ~ 910MHz	dB	25.0	28	-	-
1090 ~ 1300MHz	dB	25.0	31	-	-

C. MEASUREMENT CIRCUIT:

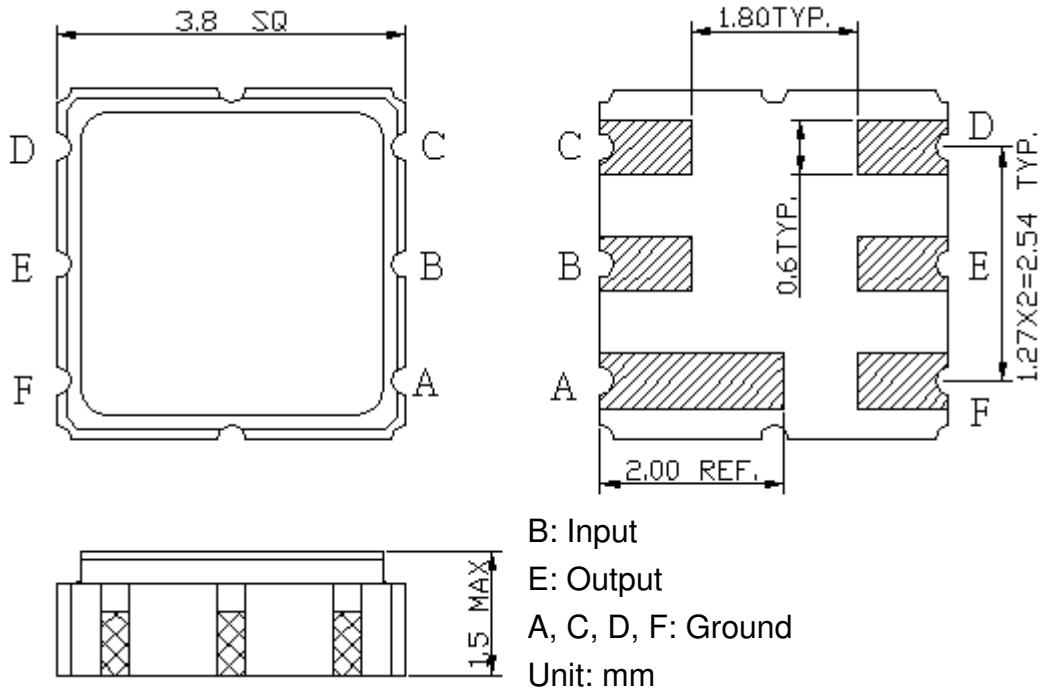
HP Network analyzer



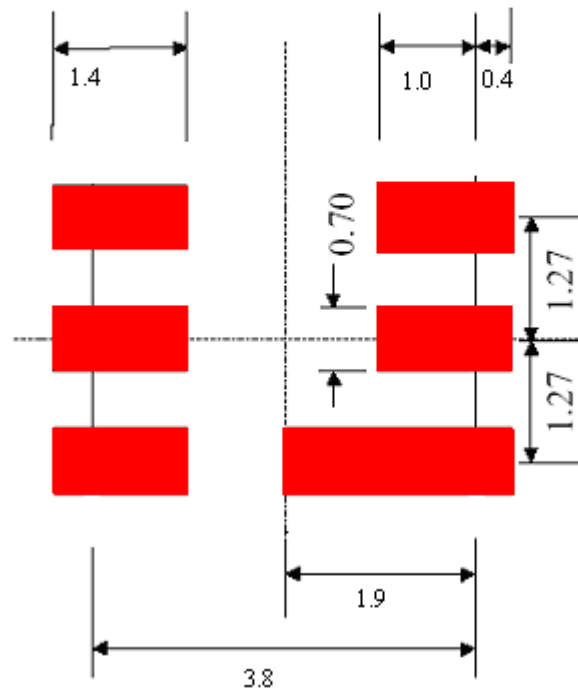
SAW Filter 1030.0MHz
Part No: MP01226

Model: TA0690A
Rev No: 4

D. OUTLINE DRAWING:



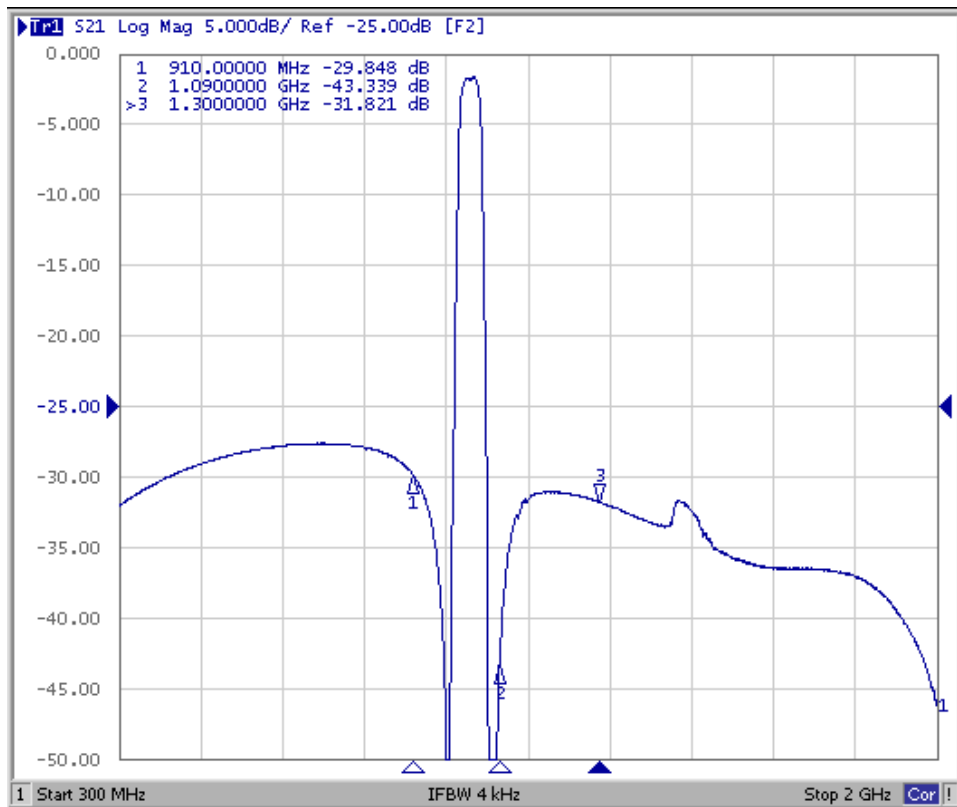
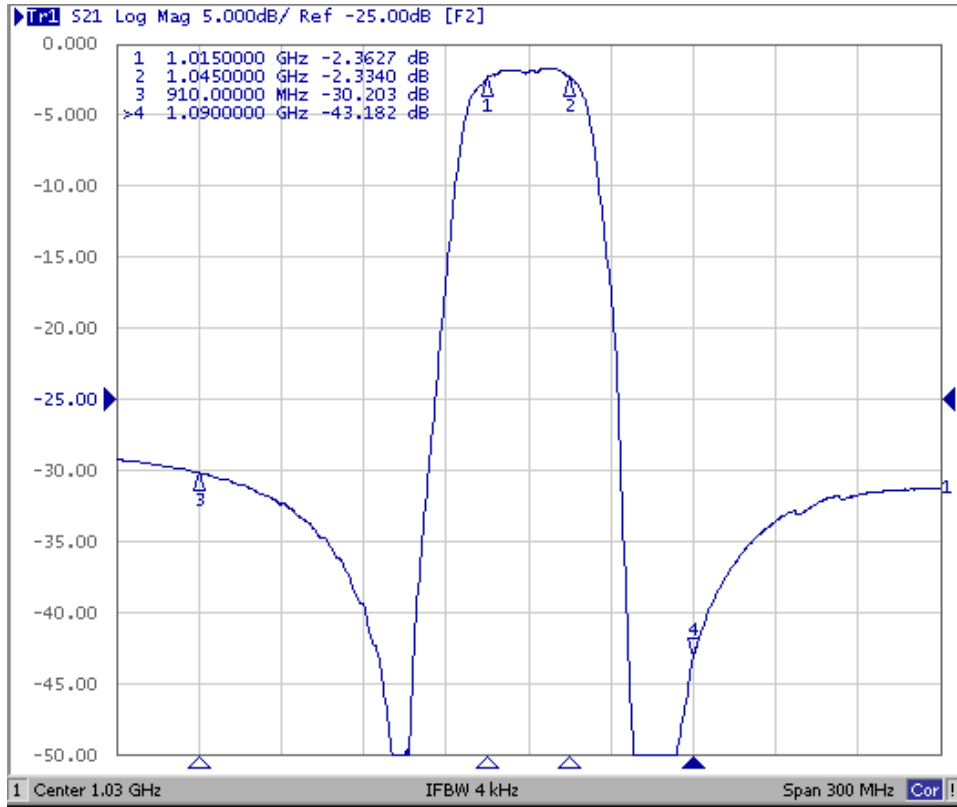
E. PCB FOOTPRINT:



SAW Filter 1030.0MHz
Part No: MP01226

Model: TA0690A
Rev No: 4

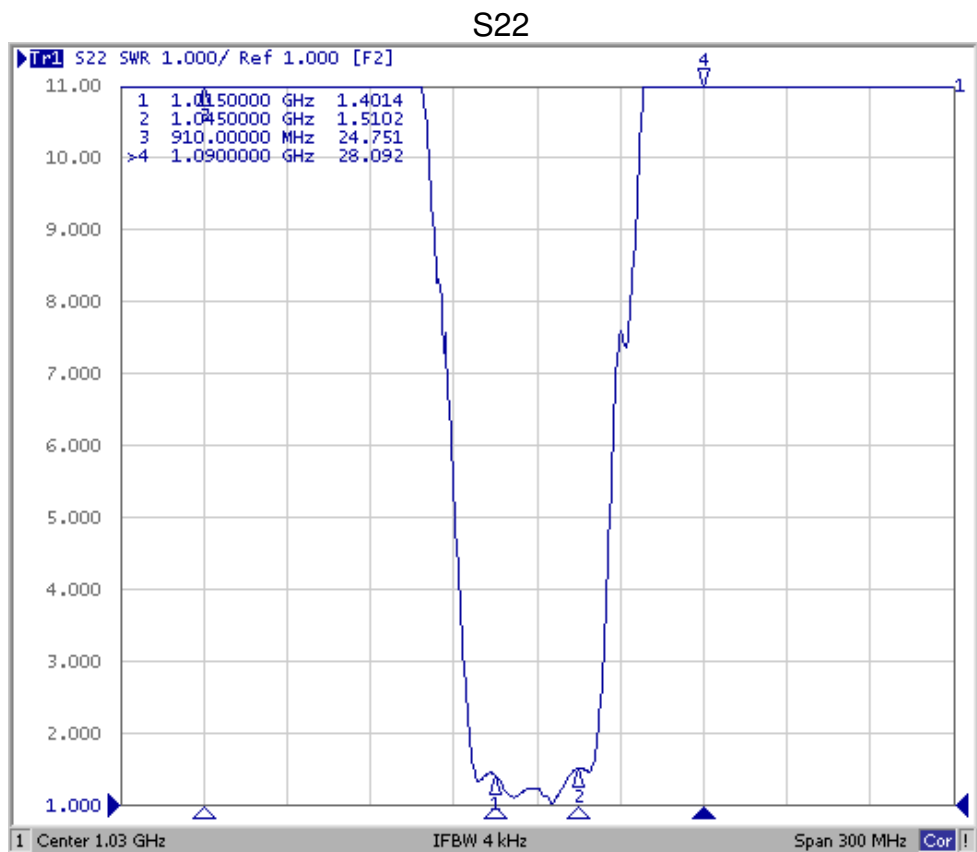
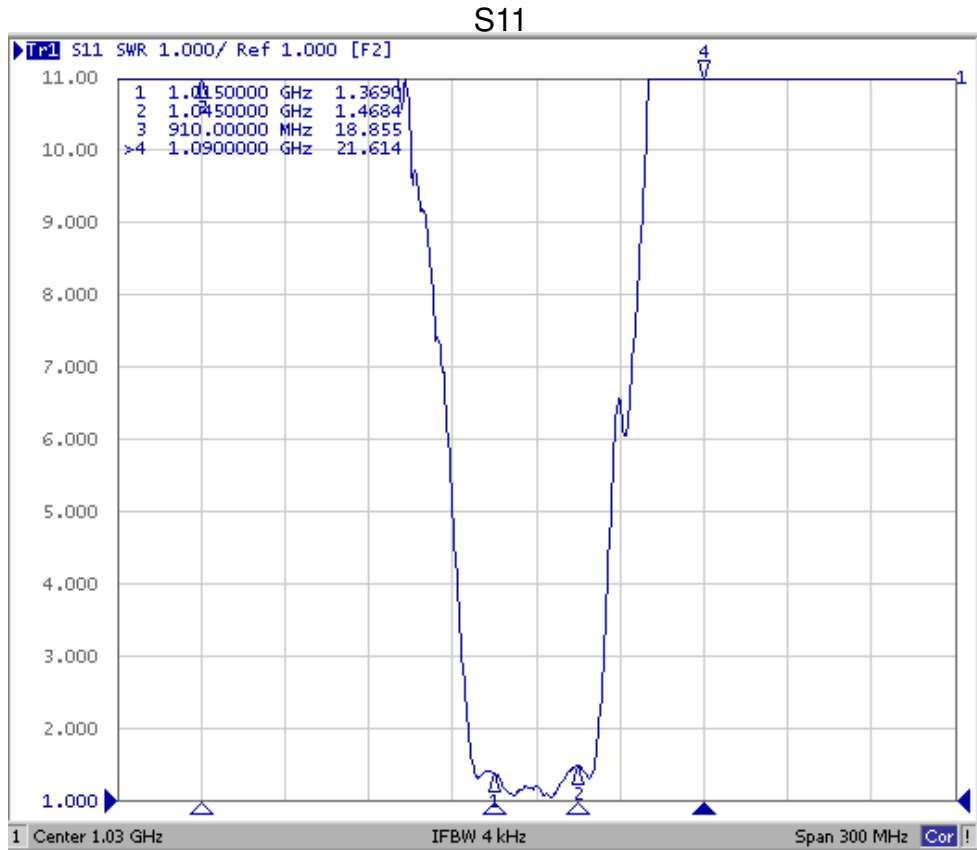
F. FREQUENCY CHARACTERISTICS:



SAW Filter 1030.0MHz
Part No: MP01226

Model: TA0690A
Rev No: 4

Reflection Functions



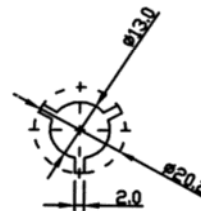
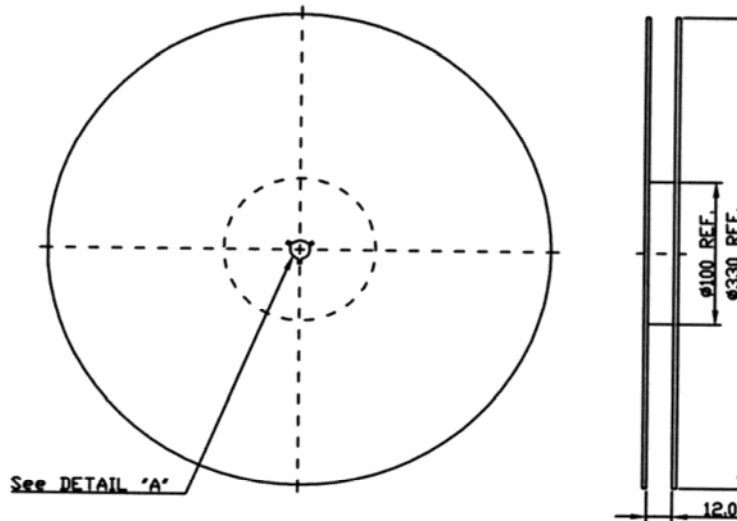
SAW Filter 1030.0MHz
Part No: MP01226

Model: TA0690A
Rev No: 4

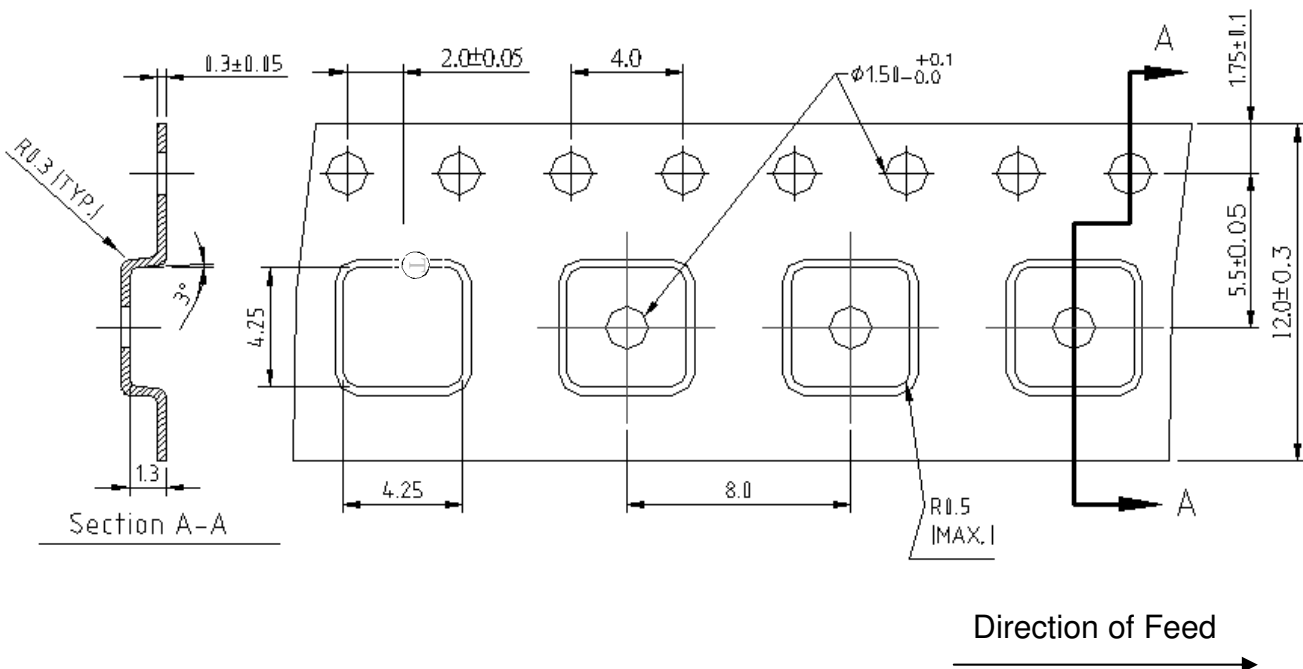
G. PACKING:

1. Reel Dimension

(Reel Count: 7" = 1000; 13" = 3000)



2. Tape Dimension



SAW Filter 1030.0MHz
Part No: MP01226

Model: TA0690A
Rev No: 4

H. RECOMMENDED REFLOW PROFILE:

1. Preheating shall be fixed at 150 ~ 180°C for 60 ~ 90 seconds.
2. Ascending time to preheating temperature 150°C shall be 30 seconds min.
3. Heating shall be fixed at 220° for 50 ~ 80 seconds and at 245 ~ 260°C peak (min. 10sec).
4. Time: 2 times.

