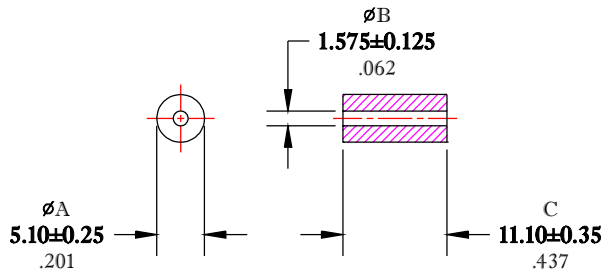


\*\* Not all features are shown in this drawing. For more detailed information, please contact your Fair-Rite representative.

UNCONTROLLED ~CATALOG~ DRAWING

SIZE	PART NO.	REV.
B	2620021802	~




DIMENSIONS  
**BOLD NUMBERS ARE IN MILLIMETERS**  
 LIGHT NUMBERS ARE IN INCHES

ELECTRICAL SPECIFICATIONS						
$\Sigma L/A(\text{mm}^{-1})$	$l_e$ (mm)	$A_e$ (mm <sup>2</sup> )	$V_e$ (mm <sup>3</sup> )	$L_o$ (nH)	IMPEDANCE (ohms)	
					10 MHz	100 MHz
0.4817	8.42	17.46	146.86	2.609	TBD MIN.	TBD MIN.
N=1 #22AWG WL=1.50"						

NOTES:

- 1 - BURNISH TO BREAK SHARP EDGES.
- 2 - IMPEDANCE MEASURED ON AN HP4193A, USING AN 04193-87001 PROBE KIT. IMPEDANCE MAY ALSO BE MEASURED ON AN E4991A OR EQUIVALENT USING A 16092A TEST FIXTURE.

FR# 20

 <b>FAIR-RITE PRODUCTS CORP.</b>						
TITLE SHIELD BEAD						
DRAWN BY	DATE	SIZE	PART NO.			REV.
D. FOOTE	11/17/2020	B	2620021802			~
CHKD BY						
APPRVD BY		SCALE	NONE	SHEET	1 of 1	