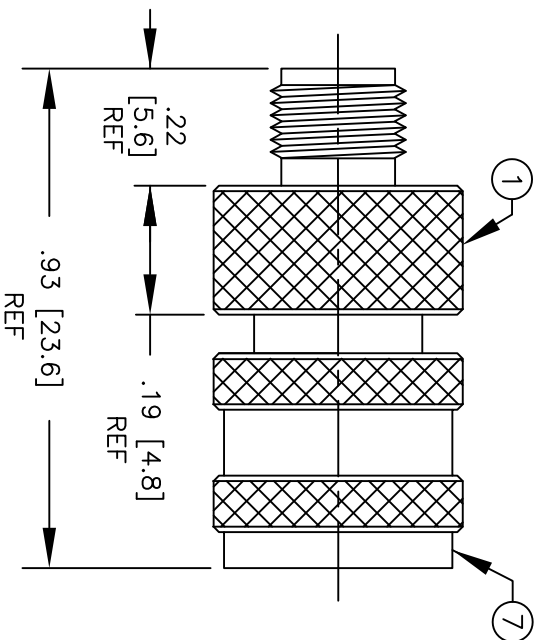


SPECIFICATION CONTROL DRAWING

THIS DRAWING CONTAINS INFORMATION PROPRIETARY TO RF INDUSTRIES, LTD. ANY UNAUTHORIZED USE OF THIS DRAWING IS EXPRESSLY PROHIBITED. ANY VIOLATION IS PUNISHABLE UNDER U.S. COPYRIGHT LAWS.

REV	DESCRIPTION	DWN	DATE	APPROVED
A	ENGINEERING RELEASE	WD	1/10/94	C. JONES
B	CHANGE PART NUMBER FROM RFU- TO RSA-	WD	2/14/94	C. JONES
C	CREATE SECTION DRAWING	KMM	10/10/94	R. RICE
D	CHANGE MATERIALS	KMM	10/5/96	R. RICE



SPECIFICATIONS:

IMPEDANCE: 50 OHMS
 WORKING VOLTAGE: 335 VRMS @ SEA LEVEL
 FREQUENCY RANGE: 0-2.5 GHz

ITEM	DESCRIPTION	QTY	MATERIAL	FINISH
7	SHELL	1	BRASS	NICKEL
6	PRESS FIT WASHER	1	BRASS	NICKEL
5	RETAINING RING	1	BRASS	NICKEL
4	DIELECTRIC RING	1	TEFLON	NONE
3	DIELECTRIC	1	TEFLON	NONE
2	CONTACT	1	PHOSPHOR BRONZE	GOLD
1	BODY	1	BRASS	NICKEL

DIMENSIONS ARE IN INCHES AND [MILLIMETERS] UNLESS OTHERWISE NOTED TOLERANCES ARE:
 DECIMALS DIAMETER

DRAWN
 K. MAXWELL

CHECKED

ORU DRAWN
 W. DANIELS

APPROVALS

RF connectors
 DIVISION OF RF INDUSTRIES, LTD.

7610 MIRAMAR RD
 SAN DIEGO, CA 92126
 (619)549-6340
 (619)549-6345 FAX

RSA-3470

SMA FEMALE TO MINI UHF MALE ADAPTER

SIZE	CABLE GROUP	DWG NO.	REV
A	N/A	8287	D

SCALE: 2:1

CAD FILE 13ARC B

SHEET 1 OF 1