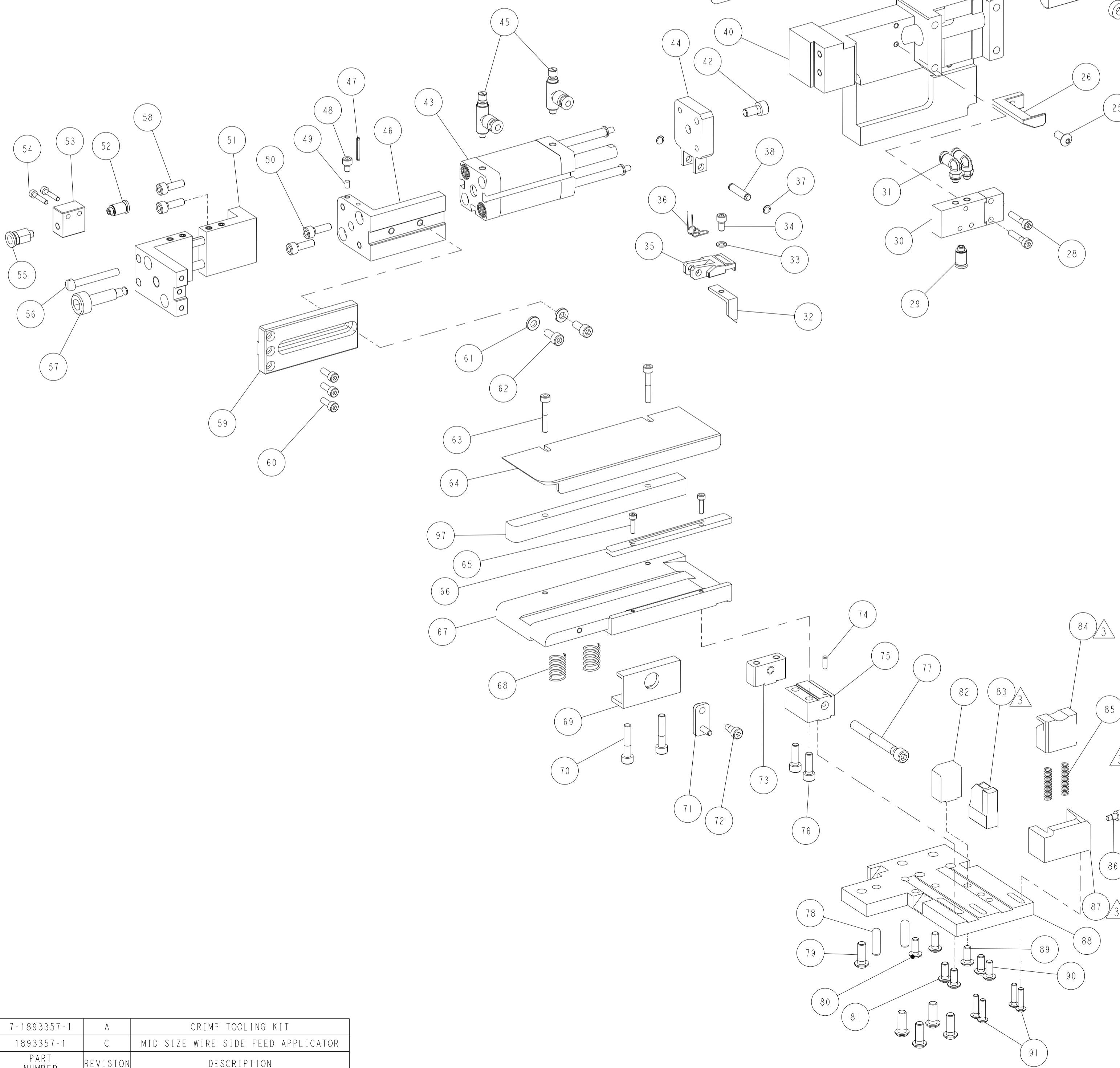


CRIMP DATA			
TERMINAL DESCRIPTION TAB 9.5x0.8 MM			
WIRE ADJUSTMENT DISC POSITION	CRIMP HEIGHT	WIRE SIZE	
C3	4,05 MM	16,00 MM ²	
C8	3,90 MM	6 AWG	
WIRE STRIP LENGTH 12,50 MM ± 0,30 MM		TERMINAL APPLICATION SPECIFICATION 114-94179	
CRIMPER	CRIMP WIDTH	CRIMPER PROFILE	APPLICATOR FEED
WIRE CRIMPER	6,6 mm (.260 in)	F	32,50 mm
INS. CRIMPER	9,14 mm (.360 in)	F	
INSULATION RANGE Ø 7,0 - 8,1 mm		WIRE RANGE >10,0 - 16,0 MM ²	
TERMINALS APPLIED:		GAUGE 1707132-1	
TERMINAL	SEAL	TERMINAL	SEAL
2177213-1	-	-	-



NOTES:

- 1 - GUARD MUST BE IN PLACE WHEN OPERATING APPLICATOR IN BENCH PRESS.
- 2 - ONLY THE ITEMS WITH QUANTITY ARE USED ON THIS APPLICATOR.
- 3 - RECOMMENDED SPARE PARTS.
- 4 - MAGNET, ITEM 100 MUST BE ORIENTED CORRECTLY IN ORDER TO PROPERLY ACTUATE THE COUNTER.

KEYS:

- - GREASY LIGHTLY.

REVISIONS					
P	LTN	DESCRIPTION	DATE	OWN	APVD
A		RELEASED	31JAN2012	CRM	CCL
B		ECO-14-005790	22APR2014	EAO	CCL
C		ECO-19-017468	14NOV2019	DSO	SHA

QTY	ITEM NO	DESCRIPTION	ITEM NO				
- 1	21030-1	PIN, DOWEL .1250 X .375	74				
- 1	1707675-1	SCREW BLOCK	73				
- 1	1707121-2	SCREW, SOCKET HD SHOULDER	72				
- 1	1707543-1	LEVER, DRAG RELEASE	71				
- 2	2-18023-2	SCR, SKT HD CAP M5 X 25.0	70				
- 1	624817-1	DRAG, TERMINAL	69				
- 2	1-22284-1	SPRING, COMPRESSION	68				
- 1	1707672-9	PLATE STRIP GUIDE	67				
- 1	1707674-5	FRONT STRIP GUIDE	66				
- 2	18023-5	SCR, SKT HD CAP M3 X 12.0	65				
- 1	2076058-9	REAR STRIP GUIDE	64				
- 2	1-18023-5	SCR, SKT HD CAP M4 X 25.0	63				
- 2	1-18023-9	SCR, SKT HD CAP M5 X 12.0	62				
- 2	624445-2	WASHER FLAT, SPECIAL	61				
- 3	1-18023-2	SCR, SKT HD CAP M4 X 12.0	60				
- 1	624365-3	PLATE, CYLINDER ADJUSTMENT	59				
- 2	2-18023-0	SCR, SKT HD CAP M5 X 16.0	58				
- 1	624368-2	SCREW, CYLINDER ADJUSTMENT	57				
- 1	5-519003-5	SCREW, MACHINE, SLOTTED CHEESE HD, M5 X 40	56				
- 1	3-197574-9	COUPLING	55				
- 2	18023-6	SCR, SKT HD CAP M3 X 16.0	54				
- 1	624366-2	FAST COUPLER SUPPORT	53				
- 1	9-197017-3	COUPLING	52				
- 1	2076798-1	SUPPORT, SET FEEDING	51				
- 2	2-18023-0	SCR, SKT HD CAP M5 X 16.0	50				
- 1	690191-1	PLUG, NYLON	49				
- 1	18023-9	SCR, SKT HD CAP M4 X 6.0	48				
- 1	3-21028-9	PIN, SLOTTED SPRING .094 X .688	47				
- 1	624364-3	CYLINDER SUPPORT	46				
- 2	9-197017-1	FLOW CONTROL VALVE, GRILA-M5-QS-4-D	45				
- 1	1707009-7	HOLDER, FEED FINGER	44				
- 1	9-197017-9	COMPACT CYLINDER	43				
- 1	2-18023-7	SCR, SKT HD CAP M6 X 12.0	42				
- 1	2076019-2	HOUSING, APPLICATOR	40				
- 4	2-18023-5	SCR, SKT HD CAP M5 X 50.0	39				
- 1	1707118-1	PIN, RETAIN, GROOVED	38				
- 2	21045-3	RING, RETAIN, EXTERN, 3/16 CRESCENT	37				
- 1	691499-1	SPRING-FEED FINGER, MINI APPLICATOR	36				
- 1	1707117-1	HOLDER, FEED FINGER	35				
- 1	1-18023-0	SCR, SKT HD CAP M4 X 8.0	34				
- 1	18025-2	WASHER, SPRG LOCK, REG M4	33				
- 1	1707678-1	FEED FINGER	32				
- 2	9-197017-2	PUSH-IN L-FITTING, QSML-M5-4	31				
- 1	624424-1	VALVE	30				
- 1	9-197017-3	COUPLING	29				
- 2	1-18023-4	SCR, SKT HD CAP M4 X 20.0	28				
- 1	2077515-1	CAP, RAM	27				
- 1	2076020-5	STRIPPER	26				
- 1	1-18024-2	SCR, BTN SKT HD CAP (M5 X 12.0)	25				
- 1	240659-3	PIN, CAM ROLLER	24				
- 1	240658-1	ROLLER-CAM	23				
- 1	624762-4	ROD, FEED	22				
- 1	2-18023-1	SCR, SKT HD CAP M5 X 20.0	21				
- 1	18025-3	WASHER, SPRG LOCK, REG M5	20				
- 1	21028-2	PIN, SLOTTED SPRING .062 X .250	19				
- 1	2-985575-0	SCR, FLT SKT HD CAP M5 X 12.0	18				
- 1	18030-3	NUT, HEX, REG M5	17				
- 1	1707007-2	CAM	16				
- 1	985575-3	SCR, FLT SKT HD CAP M3 X 10.0	15				
- 1	1707670-1	WIRE DISC, FINE ADJUSTMENT	14				
- 1	1707150-1	WASHER, FLAT	13				
- 1	1707662-1	RAM	12				
- 1	690191-1	PLUG, NYLON	11				
- 1	18032-8	SCR, SET, FLT POINT M6 X 8.0	10				
- 1	1707676-8	BLOCK, INSULATION ADJUSTMENT	09				
- 1	1707121-2	SCREW, SOCKET HD SHOULDER	08				
3	1	2-1707664-0	WIRE CRIMPER, SPECIAL	07			
- 1	-	1707680-8	CRIMPER SPACER	06			
3	1	1707725-7	INSULATION CRIMPER	05			
- 1	-	2-238011-7	BLOCK, CRIMPER SPACER	04			
- 1	-	1707680-1	CRIMPER SPACER	03			
- 1	-	1-1707669-1	DEPRESSOR, FLOATING SHEAR	02			
- 1	-	2-18024-8	SCR, BTN SKT HD CAP (M8 X 40.0)	01			
-77 -1	PART NO	DESCRIPTION	ITEM NO	-77 -1	PART NO	DESCRIPTION	ITEM NO

- 1	994970-2	COUNTER	102	
- 1	18032-2	SCREW, SET, SKT HEAD, FLAT POINT	101	
- 1	994969-1	MAGNET, COUNTER STARTER	100	
- 2	2168078-1	SCREW, DRIVE, ROUND HEAD	99	
- 1	2119740-1	TAG, IDENTIFICATION	98	
- 1	2076057-1	SPACER, STRIP GUIDE	97	
- 1	1-992946-4	PIN, DOWEL 3 X 8	96	
- 4	18024-9	SCR, BTN SKT HD CAP (M4 X 16.0)	91	
- 2	1-18024-2	SCR, BTN SKT HD CAP (M5 X 12.0)	90	
- 1	1-18024-2	SCR, BTN SKT HD CAP (M5 X 12.0)	89	
- 1	1707660-2	BASE PLATE	88	
- 1	1707668-1	SHEAR HOLDER	87	
- 1	624428-2	STOP, SHEAR	86	
- 2	3-22280-5	SPRING, COMPRESSION	85	
- 1	1707747-1	FLOATING SHEAR	84	
1	1	2076069-3	ANVIL	83
- 1	1707679-7	TERMINAL SUPPORT	82	
- 2	1-18024-2	SCR, BTN SKT HD CAP (M5 X 12.0)	81	
- 2	1-18024-2	SCR, BTN SKT HD CAP (M5 X 12.0)	80	
- 5	1-18024-9	SCR, BTN SKT HD CAP (M6 X 16.0)	79	
- 2	992946-3	PIN, DOWEL 6 X 20	78	
- 1	197352-4	ADJUSTMENT SCREW	77	
- 2	2-18023-0	SCR, SKT HD CAP M5 X 16.0	76	
- 1	1707671-1	BASE BLOCK ADJUSTMENT	75	
-77 -1	PART NO	DESCRIPTION	ITEM NO	

7-1893357-1	A	CRIMP TOOLING KIT
1893357-1	C	MID SIZE WIRE SIDE FEED APPLICATOR
PART NUMBER	REVISION	DESCRIPTION

THIS DRAWING IS A CONTROLLED DOCUMENT.

APPROVED: C. LIMA 31JAN2012

DESIGNED: P. BARLETTA 31JAN2012

CHECKED: C. MENEGHINI 31JAN2012

DATE: 31JAN2012

NAME: MID SIZE WIRE APPLICATOR (SIDE FEED VERSION)

SIZE: A1 CAGE CODE: 00779 DRAWING NO: 1893357

SCALE: 1:2 SHEET 1 OF 1

CUSTOMER DRAWING