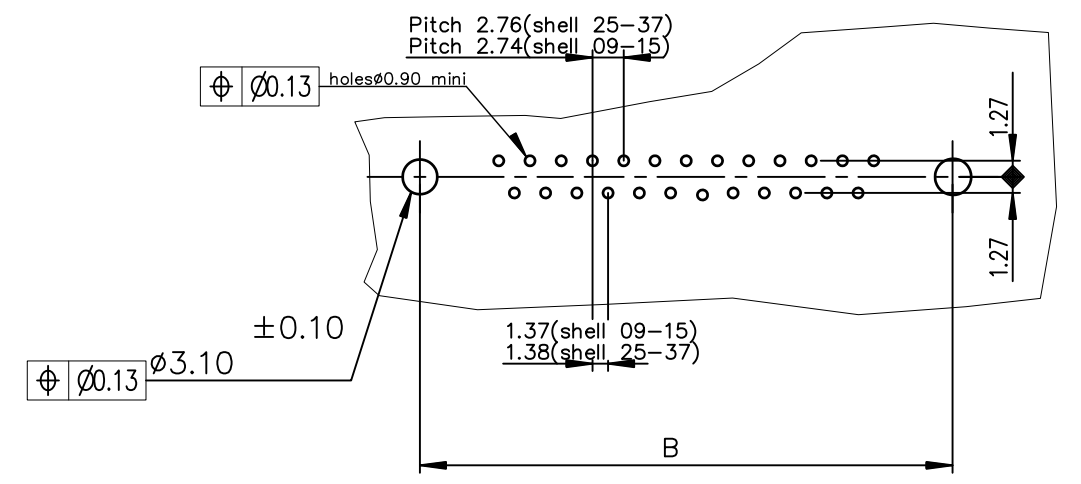


Part Number & Date Code Printing

PC card drilling dimensions(after plating)
(thickness 1.60±0.20mm)



SHELL	A±0.38	B±0.12	C±0.10	D±0.25	PART NUMBER	PART NUMBER
09	30.81	24.99	16.96	16.21	D09S13B4G*00**	D09S13B6G*00**
15	39.14	33.32	25.18	24.54	D15S13B4G*00**	D15S13B6G*00**
25	53.03	47.04	39.12	38.25	D25S13B4G*00**	D25S13B6G*00**
37	69.32	63.50	55.68	54.71	D37S13B4G*00**	D37S13B6G*00**
					Gold flash	0,76 » gold

LF FOR LEAD FREE

Threaded ØT M3 = I
Threaded ØT 4.40 = V

FOR ROHS DETAILS REFER DWG. NO: C01-8646-0000

REQUIREMENTS

Technical characteristics:

Shell: steel tin plated/Zinc Cr3 plated
 Insulators: self-extinguishing black polyster,ULclass94V0
 Contacts size 20: brass,gold 0.76µ on mating end,bright tin on termination end over nickel on entire contact
 Cycles : >500 for plating 6
 >200 for plating 4

Harpoons: phosphor bronze ,tin plated
 Metal plate for electrical continuity: brass,tin plated/Zinc Cr3 plated
 Nuts: brass,tin/Zinc Cr3 plated

Electrical characteristics:

max.current rating: 5A
 Test voltage: 1000V
 Rated voltage: 300V
 Contact resistance: ≤15mΩ
 Shell resistance: ≤5mΩ
 Insulation resistance: ≥5000MΩ

Climatic characteristics:

Operating temperature range: -55°c +125°c

Dimensions:

in accordance with MIL-C-24308

mat'l. code				surface		tolerance		projection		product family	
-				ISO 1302 ✓		ISO 406 ISO 1101				D-SUB	
ltr				ecn no		dr		date		title	
C				I05-0124		JS		2005/07/27		SOCKET CONNECTOR DELTA-D WITH	
D				I06-0074		SK		2006/06/08		SCREWLOCK,HARPOON,METAL BRACKET	
E				ELX-I-15413		MP		2013/08/03		scale 1:1	
-				-		-		-		dwg no	
-				-		-		-		sheet 1 of 1	
-				-		-		-		size	
-				-		-		-		A3	
-				-		-		-		type	
-				-		-		-		CUSTOMER Drawing	
sheet index		revision sheet		E		1					



Copyright FCI