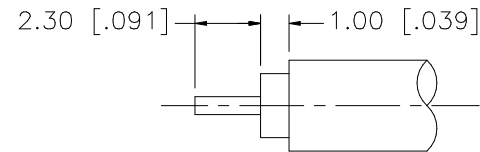
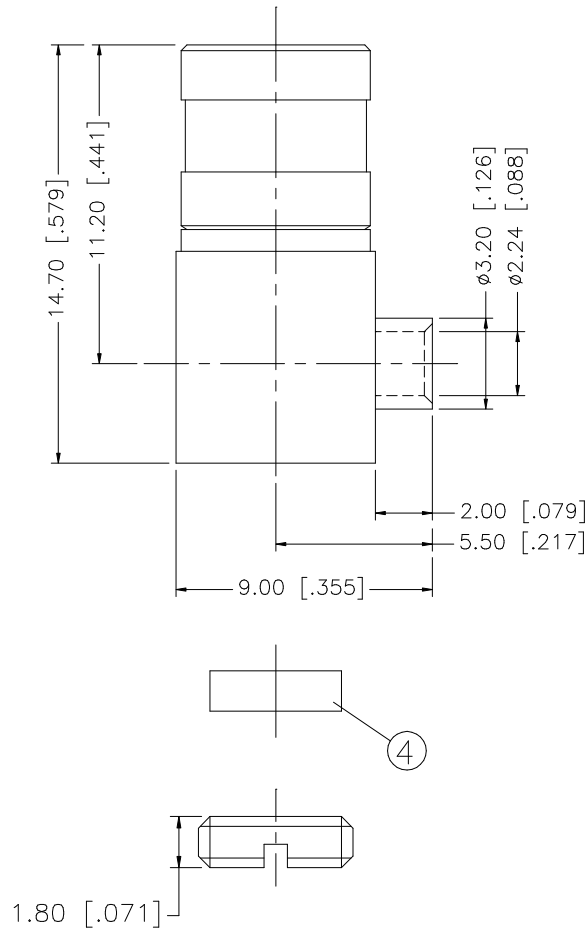


REV.	DATE	DESCRIPTION
A	06/05/03	UPDATE DRAWING FORMAT



RECOMMENDED CABLE STRIPPING DIMENSIONS

REV.	DATE	DESCRIPTION
A	06/05/03	UPDATE DRAWING FORMAT
8		
7		
6		
5	COVER	BRASS GOLD 1
4	INSULATOR	TEFLON NATURAL 1
3	CONTACT PIN	BER. COPPER GOLD 1
2	INSULATOR	TEFLON NATURAL 1
1	BODY	BRASS GOLD 1
	DESCRIPTION	MATERIAL FINISH QTY

UNLESS OTHERWISE SPECIFIED DIMENSIONS ARE IN MILLIMETERS. DIMENSIONS IN [] ARE IN INCHES AND FOR CUSTOMER REFERENCE ONLY.	APPROVALS	DATE	Amphenol Connex		
UNLESS OTHERWISE SPECIFIED TOLERANCES FOR MILLIMETERS ARE: 0.5 - 8mm ± 0.20mm 8 - 30mm ± 0.40mm 30 - 120mm ± 0.50mm UNLESS OTHERWISE SPECIFIED TOLERANCES FOR INCHES ARE: .020 - .315 = ± 0.007" .315 - 1.180 = ± 0.015" 1.180 - 4.724 = ± 0.020"	DRAWN	G.R.S.	06/05/03	PART DESCRIPTION SMB R/A DIRECT SOLDER PLUG (FOR .085", .086" SEMI-RIGID CABLE)	
	CHECKED				
	ISSUED				
	SHEET	1 OF 1			
				PART NO.	142214
				DWG. NO.	142214.DWG
				REV.	A
				SIZE	A
				SCALE	NA