

SERIES 62AG
Price Competitive Solution

FEATURES

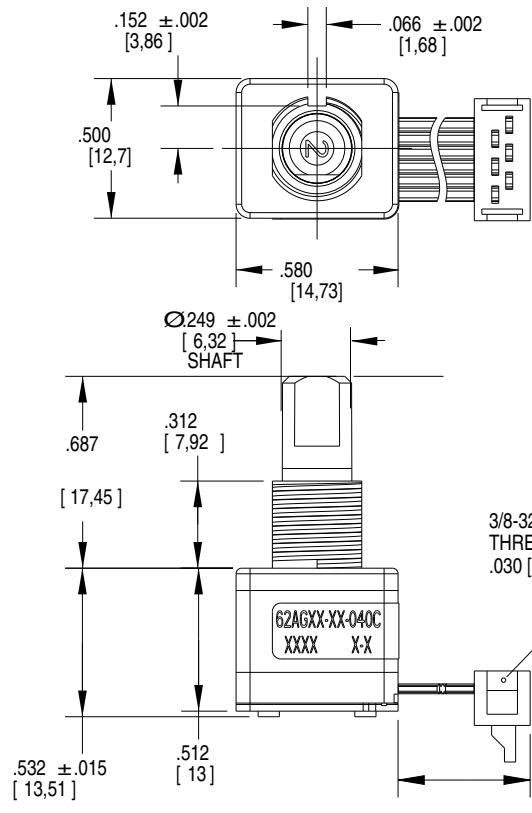
- Over 1 million rotational cycles
- 2-bit gray code output
- Quadrature coding
- Available in 16, 20, 24 and 32 detent positions
- Choices of cable length and terminations
- Available for 5Vdc and 3.3Vdc
- Optional integrated pushbutton
- Patented light pipe technology
- Cost competitive with mechanical encoders at higher volumes
- Optional shaft and panel seal

APPLICATIONS

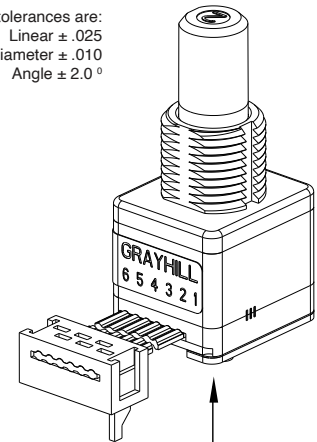
- Automotive
 - audio systems
 - navigation systems
- Medical
 - patient monitoring systems
- Test & Measurement
 - analyzers
 - oscilloscopes
- Audio & Video
 - consumer electronics
 - professional editing equipment



DIMENSIONS in inches (and millimeters)



Unless otherwise specified, standard tolerances are:
Linear $\pm .025$
Diameter $\pm .010$
Angle $\pm 2.0^\circ$

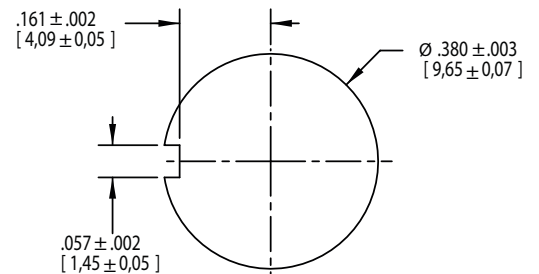


NOTE: GRAYHILL ALLOWS MULTIPLE ORIENTATIONS FOR THE GRAYHILL TEXT ON THE BACKPLATE.

3/8-32 UNEF-2A THREAD
THREADS TO BE WITHIN
.030 [0,76] OF SHOULDER

CONNECTOR IS AMP
P/N 7-215083-6
OR EQUIVALENT

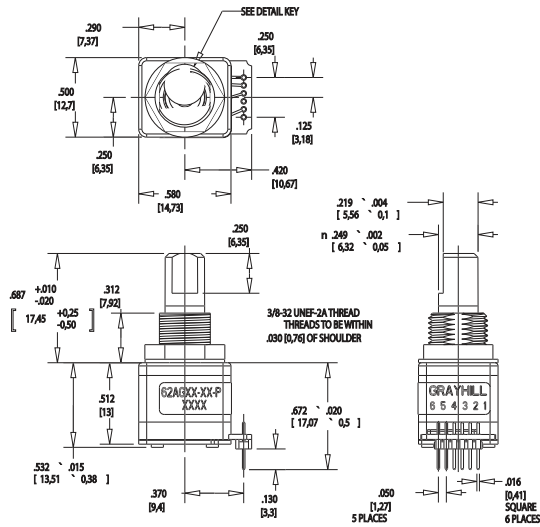
Suggested Mounting Panel Cutout



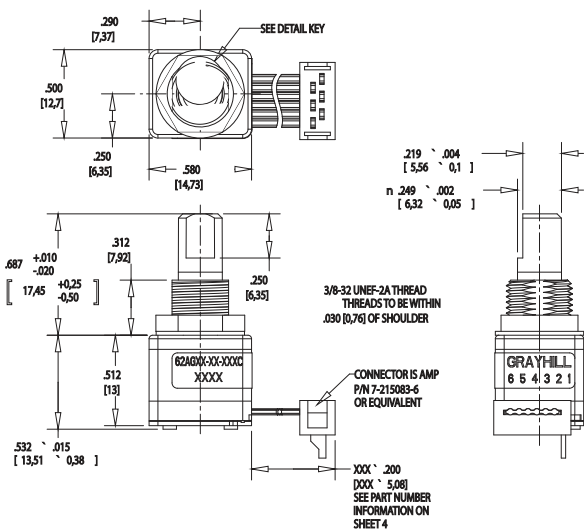
MOUNTING PANEL RECOMMENDATIONS FOR PANEL SEAL VERSIONS:

1. PANEL THICKNESS SHOULD NOT EXCEED .157.
2. MOUNTING HOLE TO BE $\text{Ø} .375 - \text{Ø} .385$.
3. $\text{Ø} .470 \times .020$ DEEP COUNTERBORE ON REVERSE OF PANEL REQUIRED FOR PROPER SEALING.
4. ANTI-ROTATION FEATURE IS RECOMMENDED. FEATURE SHOULD BE DESIGNED TO LOCK INTO BUSHING KEYWAY.

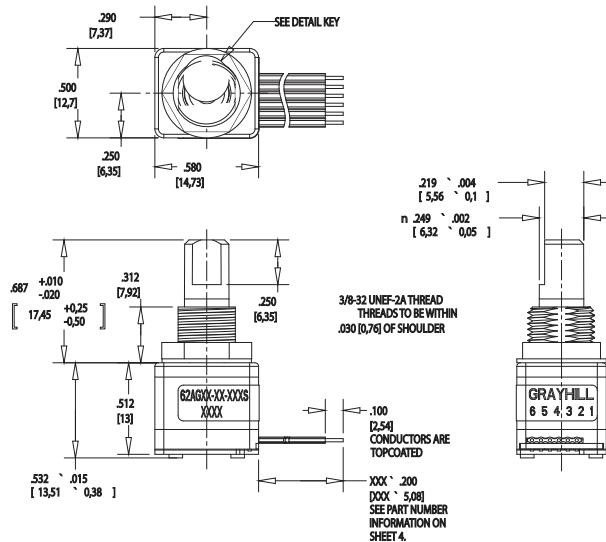
Termination Options



P - .050 Center Pins with 0.185 inch length



C - .050 Center Ribbon Cable with connector



S - .050 Center Ribbon Cable with .100 stripped end

Optical and Mechanical Encoders

WAVEFORM AND TRUTH TABLE

Standard 5.0V (Style AG)

Standard 3.3V (Style VG)

*10K Ω PULL-UP RESISTOR REQUIRED FOR OPERATION
**NOISE FILTERING CAPACITOR, LESS THAN 1000pf

WAVEFORM (CW ROTATION)

TRUTH TABLE (CW ROTATION)		
POSITION	OUTPUT A	OUTPUT B
1		
2	●	
3	●	●
4		●

BLANK = LOGIC LOW
 ● = LOGIC HIGH
 CODE REPEATS EVERY FOUR POSITIONS.

SPECIFICATIONS

Environmental Specifications

Operating Temperature: -40°C to 85°C
Storage Temperature: -40°C to 85°C
Humidity: 96 hours@90-95% humidity@40°C
Mechanical Vibration: Harmonic motion with amplitude of 15g within a varied frequency of 10 to 2000 Hz for 12 hours
Mechanical Shock:
 Test 1: 100g for 6 ms half-sine wave with a velocity change of 12.3 ft/s
 Test 2: 100g for 6 ms sawtooth wave with a velocity change of 9.7 ft/s
Seal: Meets IP67 (above panel for sealed options only)

Average Rotational Torque:

Low = 2.0±1.4 in-oz initially
 High = 3.5±1.4 in-oz initially
 50% of initial value after 1 million cycles
Mechanical Life: 1,000,000 cycles of operation. 1 cycle is a rotation through all positions and a full return.

Mounting Torque: 15in-lbs. maximum
Shaft Pushout Force: 45 lbs. minimum
Terminal Strength: 15 lbs. Cable pull out force minimum
Solderability: 95% free of pin holes & voids
Maximum rotational speed: 100 rpm

Detent Rotor: Reinforced Nylon Zytel 70G33L UL 94

Detent Spring: 303 Stainless Steel
Housing, Upper: Nylon 6/6 25% glass reinforced. Zytel FR-50
Light Pipe: Lexan, GE
Code Rotor: Delrin 100

Housing, Lower: Nylon 6/6 25% glass reinforced. Zytel FR-50
Pushbutton Actuator: Reinforced nylon. Zytel 70G33L. UL 94
Pushbutton Dome: Stainless Steel
Printed Circuit Board: NEMA Grade FR4, Double clad with copper, Plated with gold over nickel

Infrared Emitting Diode: Gallium Arsenide
Phototransistor Diode: NPN Silicon
Resistor: Metal oxide on ceramic substrate
Spacer: Pet plastic
Backplate: Stainless Steel
Label: TT406 thermal transfer cast film
Solder: 96.5% tin / 3% silver / 0.5% copper. No clean.

Hex Nut: Brass, Plated with nickel
Lockwasher: Zinc Plated Spring Steel with Clear Trivalent Chromate Finish
Cable: Copper Stranded with topcoat in PVC insulation
Connector (.050 center): PA4.6 with tin/nickel plated phosphor bronze

Rotary Electrical and Mechanical Specifications

Operating Voltage:
 AG Style 5.00±0.25 Vdc
 VG Style 3.30±0.125 Vdc
Supply Current:
 AG Style 30 mA maximum
 VG Style 30 mA maximum
Logic Output Characteristics:
 AG Style - Logic high no less than 3.0 Vdc
 Logic low shall be no greater than 1.0 Vdc
 VG Style - Logic high no less than 2.0 Vdc
 Logic low shall be no greater than 1.0 Vdc
Output: Open Collector Phototransistor
Optical Rise Time: 30ms maximum
Optical Fall Time: 30ms maximum

Pushbutton Electrical and Mechanical Specifications

Rating: 10 mA @ 5 Vdc
Contact Resistance: <10 Ω (Compatible with CMOS or TTL)
Life: 1 million actuations minimum
Contact Bounce: <4 ms make, <10ms break
Actuation Force: 5 = 510±150 grams, 9 = 950±200 grams
Shaft Travel: .017 ± .008 INCH

Materials and Finishes

Bushing: Zamak 2
Shaft: Zamak 2
Shaft and Panel Seals: Silicone Rubber

Optical and Mechanical Encoders

Series
Style: AG = 5.0V; VG = 3.3V
Angle of Throw: 11 = 11.25° code change and 32 detent positions; 15 = 15° code change and 24 detent positions; 18 = 20° code change and 20 detent positions; 22 = 22.5° code change and 16 detent positions
Rotational Torque Option: L = Low Torque, H = High Torque, N = Non-Detented
Pushbutton Option: 0 = No pushbutton, 5 = 510 grams, 9 = 950 grams
Seal Option: Blank = No shaft & panel seal, S = Shaft & panel seal ('S' option cannot be used with '5' pushbutton option)
Termination: S = .050" Stripped Cable, C = .050" Connector, P = .050" Header
Cable Length: 020 = 2.00" Cable, 030 = 3.00" Cable, 040 = 4.00" Cable, 050 = 5.00" Cable, 060 = 6.00" Cable

Available from your local Grayhill Distributor. For prices and discounts, contact a local sales office, an authorized distributor, or Grayhill.