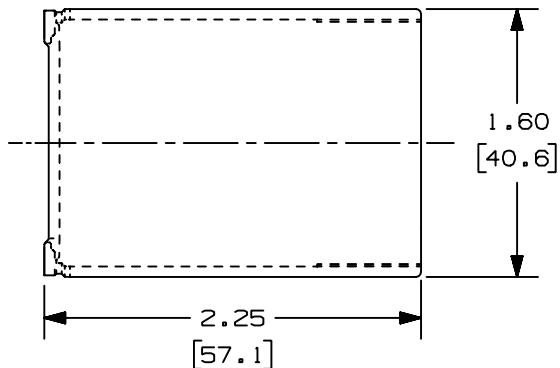
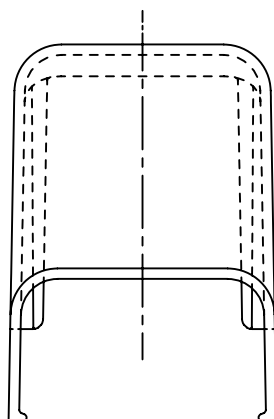
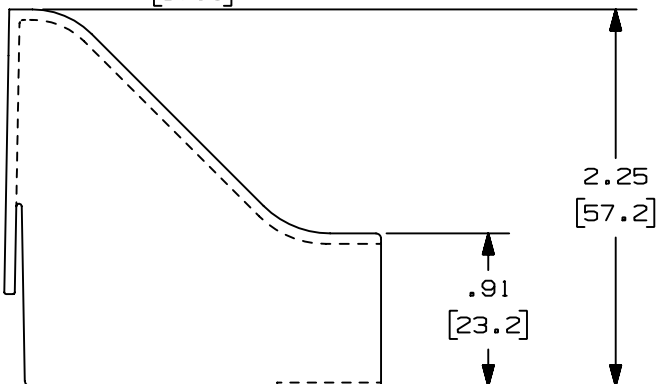


THIS COPY IS PROVIDED ON A RESTRICTED BASIS AND IS NOT TO BE USED IN ANY WAY DETRIMENTAL TO THE INTERESTS OF PANDUIT CORP.



PART NAME	PANDUIT P/N *	COLOR	WEIGHT
DROP CEILING FITTING	DCF10WH-X	WHITE	2.65 LB/100 PCS. (1203g/100 PCS.)
	DCF10EI-X	ELECTRICAL IVORY	
	DCF10IG-X	INTERNATIONAL GRAY	
	DCF10IW-X	INTERNATIONAL WHITE	



NOTES:
*1. SEE CURRENT PRICE SHEET FOR PART NUMBER SUFFIX DESIGNATION FOR PACKAGE SIZE.



CAD FILENAME/LAYERS D34017BA_DC_DCF10_02.PRT

							PANDUIT CORP. TINLEY PARK, ILLINOIS	
							DROP CEILING FITTING (DCF10) CUSTOMER DRAWING	
							UNLESS OTHERWISE SPECIFIED, DIMENSIONAL TOLERANCES ARE: (.X) ± (.XXX) ± (.XX) ±.03 [.8] ANGLES ±	
							UNLESS OTHERWISE SPECIFIED, ALL DIMENSIONS ARE GIVEN IN INCHES, THIRD ANGLE PROJECTION.	
3	07-08-02	JHNU	RMHI	C. REVISED MATERIAL IN DRAWING TITLE BLOCK.	34017-2	RGRO	SCALE FULL	
2	11-25-87	LDB	WJB	B. ADDED PART NUMBERS DCF10EI AND DCF10LI.	34017-2	2 WJB	DRAWN BY RN DATE 06-04-86 CHK'D WJB	
1	10-01-86	RN	WJB	A. DCF10 PART NUMBER WAS DCF.	34017-2	1 WJB	MATERIAL: ABS	
R	06-11-86	RN	WJB	RELEASED TO PRODUCTION	34017-2	R WJB	DRAWING NO. 34017-02 DWG SIZE A	
REV	DATE	BY	CHK	DESCRIPTION	ECN - R	CUST SUP		

