

4

3

2

1

THIS DRAWING IS UNPUBLISHED.

RELEASED FOR PUBLICATION

ALL RIGHTS RESERVED.

© COPYRIGHT - By -

REVISIONS

P	LTR	DESCRIPTION	DATE	DWN	APVD
	J1	REV PER ECO-12-014455	13SEP12	KH	DR
	J2	REVISED PER ECO-17-014338	29MAR2018	RS	DR
	J3	REVISED PER ECO-19-009076	14JUN2019	RS	DR

AMP WIRE RANGE

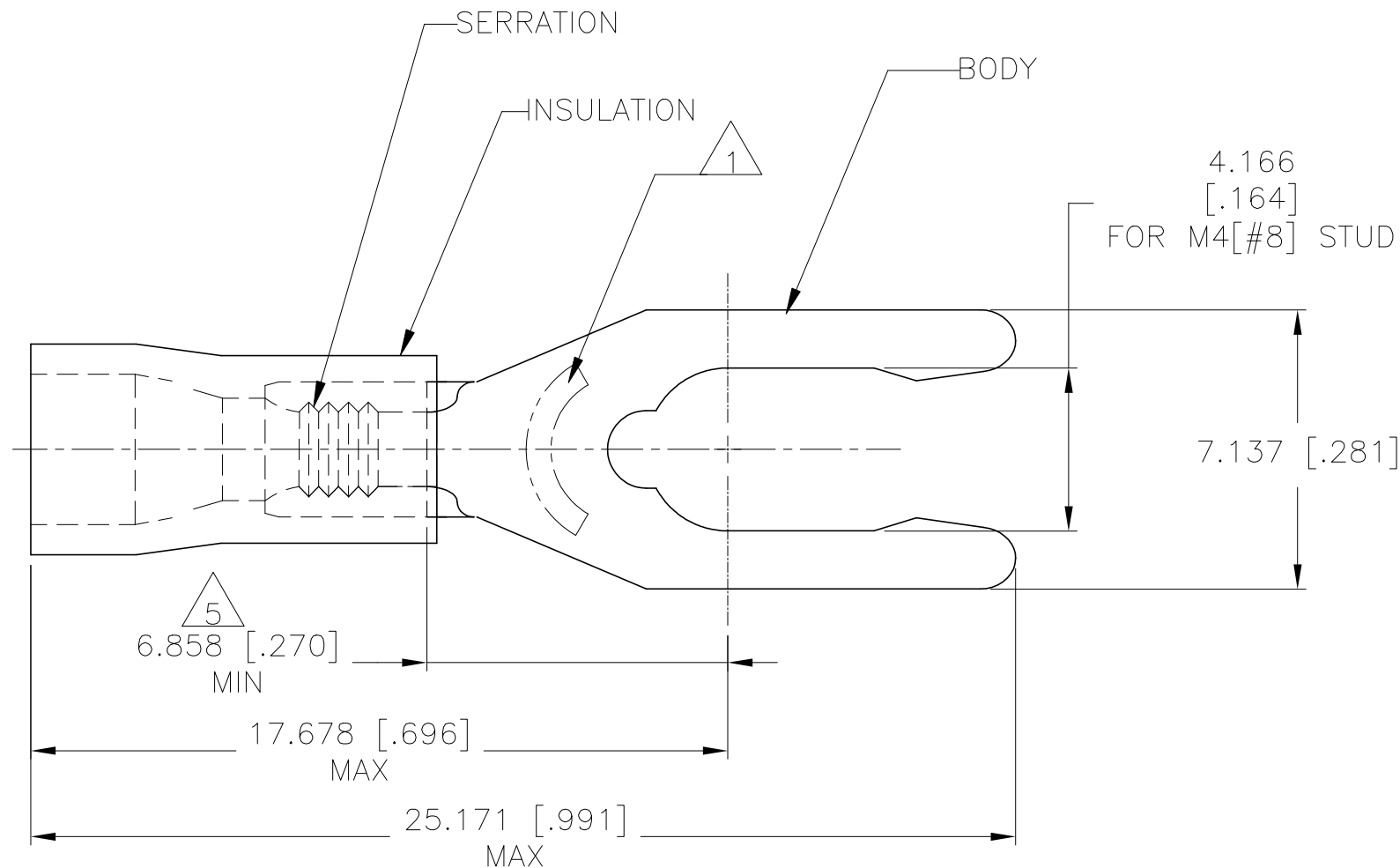
UL Listed FILE E13288

LR7189 Certified

22-16 AWG SOLID OR STRANDED

22-16 AWG SOLID OR STRANDED

22-16 AWG SOLID OR STRANDED



- 1 STAMP "8SAMP 22-18*" APPROX AS SHOWN 22-16 TERMINALS ARE STAMPED 22-18 IN ACCORDANCE WITH MILITARY SPEC SAE AS7928 COMMERCIAL WIRE RANGE IS 22-16
- 2 WIRE INSUL ϕ 2.667-3.556 [.105-.140]
- 3 BODY MATL THK, 0.787 ± 0.051 [.031 \pm .002]
- 4 MATERIAL: BODY - BRASS. PER ASTM B36 INSULATION - PVC
- 5 APPLIES FROM THE EDGE OF METAL BARREL TO THE CENTER OF THE STUD.

5000	ON TAPE, REEL	52454-1
1000	LOOSE PIECE	52454
QTY	PACKAGE TYPE	PART NO

CUSTOMER SERVICE SYSTEMS

MAX RECOMMENDED OPERATING TEMPERATURE:

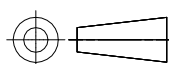
105°C [221°F]

VOLTAGE RATING: 600V MAX (1000V FIXTURE OR SIGN)

CIRCULAR MIL AREA: 0.26-1.65mm² [509-3260] SOLID OR STRANDED

THIS DRAWING IS A CONTROLLED DOCUMENT.

DIMENSIONS: mm [INCHES]



TOLERANCES UNLESS OTHERWISE SPECIFIED:

- 0 PLC $\pm -$
- 1 PLC $\pm -$
- 2 PLC $\pm -$
- 3 PLC $\pm 0.127[.005]$
- 4 PLC $\pm -$
- ANGLES $\pm -$

MATERIAL



FINISH BODY: TIN PER ASTM B545 INSULATION: COLOR-RED

DWN L OLMEDA 26JUN95
CHK M ELLIS 26JUN95
APVD G NGO 26JUN95

PRODUCT SPEC UL 486A-B

APPLICATION SPEC 114-2161

WEIGHT

CUSTOMER DRAWING

STE TE Connectivity Ltd.

NAME: TERMINAL, SPRING SPADE, LONG, PLASTI-GRIP, WIRE SIZE: 22-16 AWG

SIZE: A3 CAGE CODE: 00779 DRAWING NO: C-52454 RESTRICTED TO: -

SCALE: 6:1 SHEET: 1 OF 1 REV: J3

FOR ORDER ENTRY 1-800-526-5142

THIS DRAWING IS A CONTROLLED DOCUMENT FOR AMP INCORPORATED. IT IS SUBJECT TO CHANGE AND THE CONTROLLING ENGINEERING ORGANIZATION SHOULD BE CONTACTED FOR THE LATEST REVISION.