

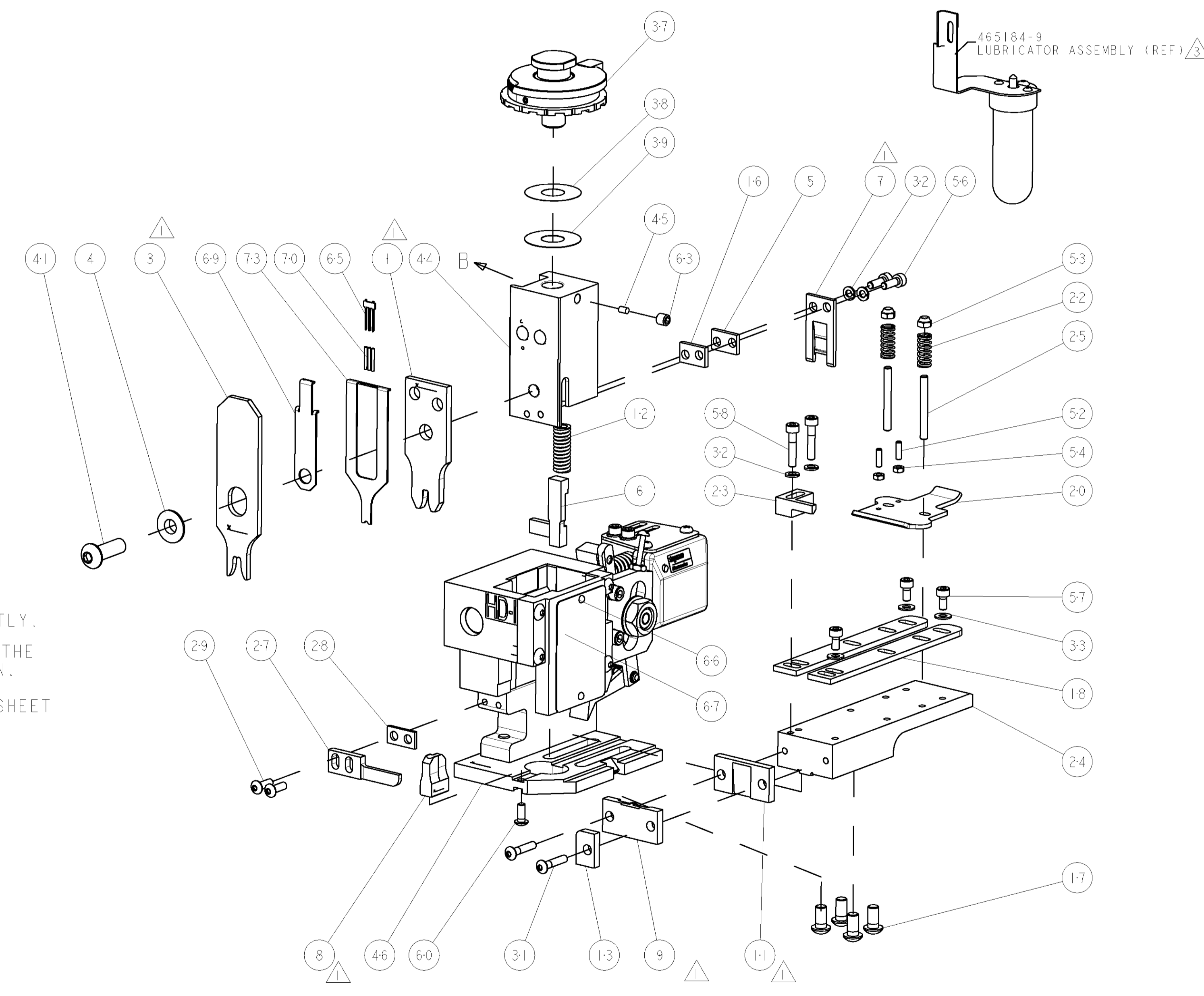
PART NUMBER	REV	TERMINATOR	FEED TYPE	DESCRIPTION
1529263-1	A	BENCH & LEADMAKER	MECH POST FEED	HDI APPLICATOR
7-1529263-1	A	BENCH & LEADMAKER	MECH POST FEED	-1 AND SPARE PARTS
7-1529263-7	A	-	-	SPARE PARTS KIT

SET UP GAGE		REVISIONS			
LOC	DIST	REV	DATE	BY	APPV
A	66	A	20DEC2007	LJL	MC

CRIMP DATA	TE TERMINAL	TE CRIMP SPECS	
TERMINAL NAME: RECEPTACLE .250 SERIES FASTON			
CRIMP	SIZE	TYPE	RANGE
WIRE	3.30 [.130 IN]	F	2.10-5.30mm ² or 14-10 AWG ⁵
INSUL	5.33 [.210 IN]	F	3.80-5.10 [.150-.200 IN]
WIRE STRIP LENGTH 4.80-5.60 [.188-.220 IN]		APPL INSTRUCTIONS 408-8323 & 408-8490	
TERMINAL APPL SPEC	114-3118	FEED	18.80 [.740 IN]

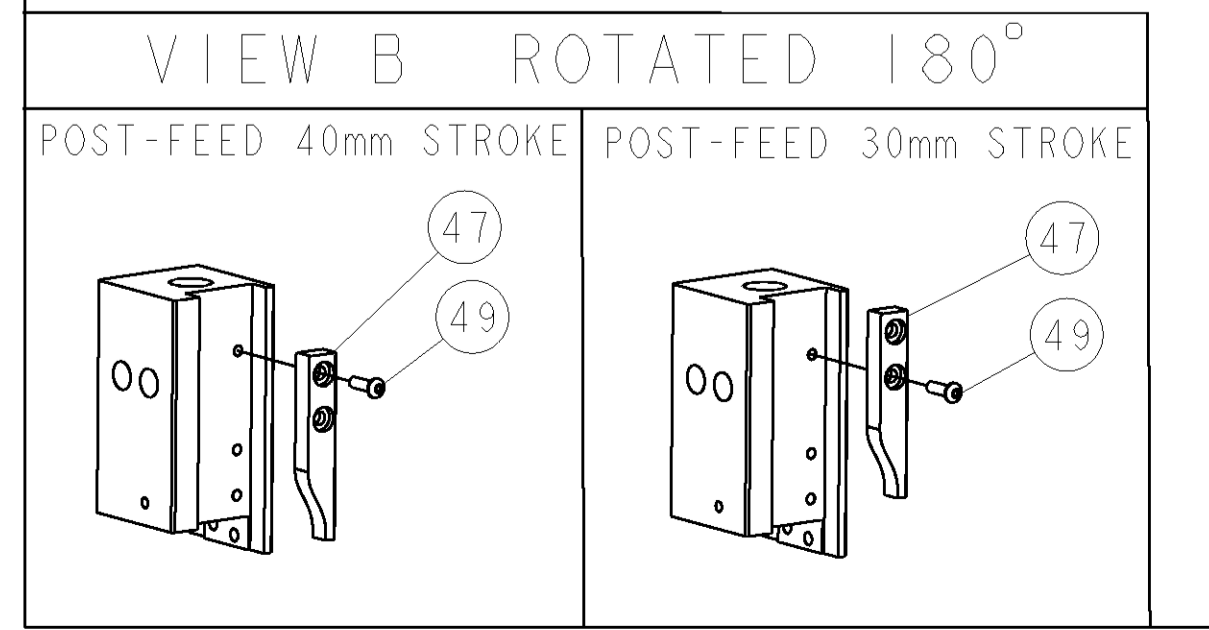
TERMINALS APPLIED
736026
735211
-
-
-

WIRE SIZE	CRIMP HEIGHT *	REF SETTING *
5.30mm ²	2.74 ±0.05 [.108 ±.002 IN]	A 0
4.00mm ²	2.34 ±0.05 [.092 ±.002 IN]	C 9
3.30mm ²	2.23 ±0.05 [.088 ±.002 IN]	D 8
2.10mm ²	1.98 ±0.05 [.078 ±.002 IN]	F 2
-	-	-
-	-	-
-	-	-
-	-	-
-	-	-
-	-	-
-	-	-
-	-	-
-	-	-



- 1. RECOMMENDED SPARE PARTS
- 2. GREASE RAM, CAM, CAM FOLLOWER AND FEED ROD LIGHTLY.
- 3. CERTAIN TERMINALS REQUIRE LUBRICATION. REFER TO THE APPLICATOR INSTRUCTION SHEET FOR MORE INFORMATION.
- 4. LUBRICATE DAILY PER THE APPLICATOR INSTRUCTION SHEET SUPPLIED WITH THE APPLICATOR.
- 5. WIRE RANGE STATED IS THAT OF THE TERMINAL.

*** WARNING**
ON INSTALLATION, SET WIRE DISC TO LARGEST WIRE SIZE SETTING. USE OF SETTINGS BELOW MIN. REQUIRED CRIMP HEIGHT SETTING WILL CAUSE DAMAGE TO CRIMP TOOLING.



QTY	DESCRIPTION	ITEM NO
-	1490525-1 DEPRESSOR, WIRE	73
-	1338705-4 DOCUMENTATION PACKAGE	71
-	1-23147-4 SPRING, COMPRESSION	70
-	1490524-2 DEPRESSOR, SPACER	69
-	461264-5 PLATE, IDENTIFICATION	67
-	21017-2 SCREW, DRIVE	66
-	1424350-1 HOLDER, PIN, WIRED	65
-	3-18031-0 SCR, SET, CUP POINT M6 X 6.0	63
-	18024-7 SCR, BTN SKT HD CAP (M4 X 10.0)	60
-	1-18023-4 SCR, SKT HD CAP M4 X 20.0	58
-	1-18023-0 SCR, SKT HD CAP M4 X 8.0	57
-	1-18023-2 SCR, SKT HD CAP M4 X 12.0	56
-	18029-1 NUT, HEX, REG M3	54
-	986965-1 NUT, LOCK, HEX, TORQUE (M4)	53
-	2-18032-2 SCR, SET, FLT POINT M3 X 10.0	52
-	18024-3 SCR, BTN SKT HD CAP (M3 X 10.0)	49
-	1338676-1 CAM, UNIVERSAL POST-FEED	47
-	1338662-2 SUB ASSY, APPLICATOR FRAME	46
-	690191-1 PLUG, NYLON	45
-	1333260-1 RAM	44
-	2-18024-6 SCR, BTN SKT HD CAP (M8 X 25.0)	41
-	690125-1 SHIM SUB-ASSY	39
-	469367-2 SHIM	38
-	879103-2 FINE ADJUST HEAD ASSEMBLY	37
-	18027-2 WASHER, FLAT, REG M4	33
-	18025-2 WASHER, SPRG LOCK, REG M4	32
-	1-18024-0 SCR, BTN SKT HD CAP (M4 X 20.0)	31
-	18024-8 SCR, BTN SKT HD CAP (M4 X 12.0)	29
-	3-690451-2 SPACER, STRIPPER	28
-	240639-1 STRIPPER (MACHINING)	27
-	1320906-1 STUD, THREADED	25
-	1320995-1 PLATE, STRIP GUIDE	24
-	240825-8 PLATE, STRIP HOLD DOWN	23
-	4-22281-1 SPRING, DRAG	22
-	1338665-1 DRAG	20
-	1338663-6 GUIDE, LOWER STRIP	18
-	1-18024-8 SCR, BTN SKT HD CAP (M6 X 12.0)	17
-	1338708-1 SPACER, SLUG BLADE	16
-	2-690481-0 SPACER, HOLD DOWN	13
-	23846-1 SPRING, DIE	12
-	240644-9 PLATE, REAR SHEAR	11
-	-	10
-	2-690495-5 PLATE, FRONT SHEAR	9
-	2-1633384-9 ANVIL, COMBINATION	8
-	690474-8 BLADE, SLUG	7
-	2-455892-7 HOLD DOWN, TERMINAL	6
-	8-240641-6 SPACER	5
-	238009-1 BLOCK, FL CRIMPER SPACER	4
-	6-683453-8 CRIMPER, INSULATION PREMIUM	3
-	-	2
-	456410-3 CRIMPER, WIRE PREMIUM	1
-77-71-1	PART NO	

<small>THIS DRAWING IS UNPUBLISHED. RELEASED FOR PUBLICATION BY TYCO ELECTRONICS CORPORATION. ALL RIGHTS RESERVED.</small>		<small>THIS DRAWING IS UNPUBLISHED. RELEASED FOR PUBLICATION BY TYCO ELECTRONICS CORPORATION. ALL RIGHTS RESERVED.</small>	
DIMENSIONS: INCHES 0 PLC ±.1 1 PLC ±.01 2 PLC ±.001 3 PLC ±.0001 4 PLC ±.0001 ANGLES ±.1		TOLERANCES UNLESS OTHERWISE SPECIFIED: DIMENSIONS: INCHES 0 PLC ±.1 1 PLC ±.01 2 PLC ±.001 3 PLC ±.0001 4 PLC ±.0001 ANGLES ±.1	
MATERIAL: - FINISH: -		WEIGHT: - CUSTOMER DRAWING: -	
DWN: L. LOETHOUSE CHK: - APVD: M. CLIFFORD PRODUCT SPEC: - APPLICATION SPEC: -		DATE: 26NOV2007 NAME: FINE ADJUST END FEED HDI APPLICATOR SIZE: A1 CAGE CODE: 00779 DRAWING NO: C-1529263 SCALE: 3:5 SHEET: 1 OF 1 REV: A	

CUSTOMER VIEWABLE ASSEMBLY