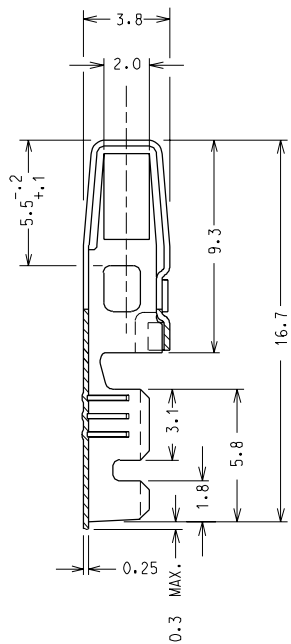
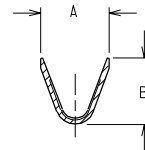


SENDO DI SVOLGIMENTO DALLA BOBINA
DEREELING DIRECTION

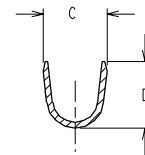
(N.° PEZZI PER BOBINA: 4000)
(N. OF TERMINALS PER REEL: 4000)



SEZIONE A - A
SECTION A - A



SEZIONE B - B
SECTION B - B



MATERIALE: BRONZO FOSFOROSO
MATERIAL: PHOSPHOR BRONZE

FINITURA: PRESTAGNATO
PLATING: PRE-TINNED

CARATTERISTICHE DI PRODOTTO SECONDO PS 94509
PRODUCT CHARACTERISTICS ACCORDING TO PS 94509 E

CODICE P/N	SEZIONE CAVO WIRE SIZE	Ø ISOLANTE INS. RANGE	A	B	C	D
94509-1103	0.35 - 0.50	1.70 MAX	1.9	2.2	2.7	2.7
94509-1203	0.75 - 1.00	2.10 MAX	3.0	2.9	2.8	2.9

EC NO. Z9-065 DRWNS. BARBIERI 08-10-98 CHK: S. SORATO 08-10-98 APPR: R. MARTUCCI 08-10-98	QUALITY SYMBOLS MAJOR M SIGNIF. S CRITICAL C	GENERAL TOLERANCES: (UNLESS SPECIFIED)		SCALE 5:1	DESIGN UNITS <input checked="" type="checkbox"/> mm <input type="checkbox"/> INCH	DIMENSIONS: <input type="checkbox"/> mm <input type="checkbox"/> INCH <input type="checkbox"/> mm <input checked="" type="checkbox"/> mm ONLY	SHT	REV	
		4 PLACES ±0.1	±0.1	DRAWN BY & DATE S. BARBIERI 18-07-90	TITLE: CONTATTO A FORCELLA DIRITTO - SPESSORE NOMIN. DEL MASCHIO: 2.1 mm - STRAIGHT FORK TERMINAL - TAB SIZE: 2J mm -		REVISE ON CAD ONLY		
D	REV	3 PLACES ±0.2	±0.2	CHECKED BY & DATE	APPROVED BY & DATE M. PREVIATO 18-07-90	MOLEX INCORPORATED	MATERIAL NO.	DRAWING NO.	SHEET NO.
		2 PLACES ±0.3	±0.3		CAD FILENAME 94509008.DGN		SEE TABLE	SD-94509-008	1/1
		1 PLACE ±0.2	±0.2	ANGULAR: ± 3°					SIZE A3
DRAFT WHERE APPLICABLE MUST REMAIN WITHIN DIMENSIONS					THIS DRAWING CONTAINS INFORMATION THAT IS PROPRIETARY TO MOLEX INCORPORATED AND SHOULD NOT BE USED WITHOUT WRITTEN PERMISSION.				