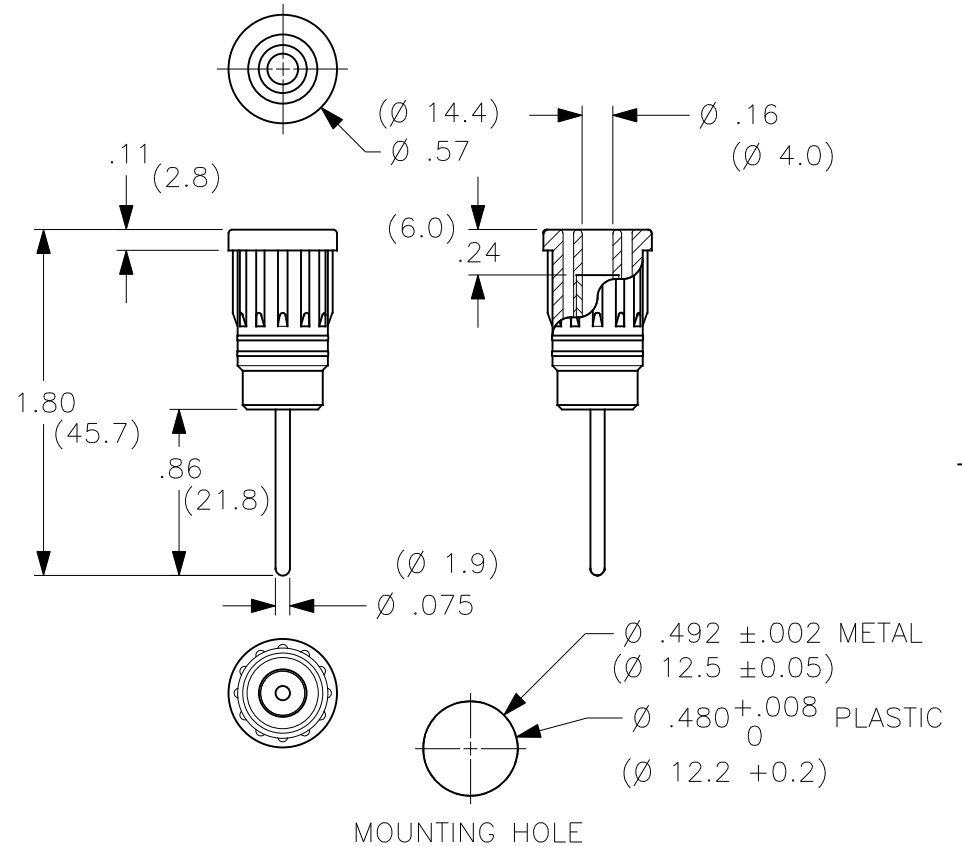


THIS IS ISSUED IN STRICT CONFIDENCE THAT IT IS NOT USED AS A BASIS FOR MANUFACTURE OR SALE AND THAT IT IS NOT COPIED, REPRINTED OR DISCLOSED TO A THIRD PARTY EITHER WHOLLY OR IN PART WITHOUT THE PRIOR WRITTEN CONSENT OF CAL TEST ELECTRONICS, INC.

- PUSH-IN SAFETY SOCKET w/1.9mm X 21mm SHORT PIN.
- SPECIFICATIONS:
INSULATOR: POLYAMIDE (NYLON)
CONTACT: BRASS, NICKEL PLATED
- RATING:
VOLTAGE: 1,000 V CAT III/600 V CAT IV P2 (IEC 61010-031)
CURRENT: 36A MAX.
RESISTANCE: <5mΩ.
TEMPERATURE: -20° C TO +80° C.
- MOUNTING HOLE: REF. DIAGRAM.
- SUGGESTED PANEL THICKNESS FOR PRESS-FIT SUPPORT:
PLASTIC: >0.080" (2)
METAL: >0.062" (1.5)

| REVISIONS | | | |
|-----------|--|---------|----------|
| REV. | DESCRIPTIONS | DATE | APPROVED |
| — | CLASS A RELEASED | 7/12/99 | |
| A | BODY CONFIGURATION CHANGE; DIM. 1.80 WAS 1.77; ADDED NOTE 5. | 3/1/05 | |



PART NUMBER

CT2913-#

- COLOR:
- 0 - BLACK
 - 1 - BROWN
 - 2 - RED
 - 3 - ORANGE (CUSTOM)
 - 4 - YELLOW
 - 5 - GREEN
 - 6 - BLUE
 - 7 - PURPLE
 - 8 - GRAY
 - 9 - WHITE

| | | | | | | | | |
|------------------------|--|---|-----------------|---------|--|--------------|----------------|----------|
| THIRD ANGLE PROJECTION | | UNLESS OTHERWISE SPECIFIED DIMENSIONS ARE IN INCHES TOLERANCES ARE: FRACTIONS DECIMALS ± 1/32 .XX ± .02 .XXX ± .005 DO NOT SCALE DRAWING | CONTRACT NO. | | Cal Test Electronics 22820 Savi Ranch Parkway Yorba Linda, CA 92887-4610 | | | |
| | | | APPROVALS | DATE | TITLE | | | |
| NEXT ASSY | | MATERIAL | DRAWN | 7/12/99 | 4mm PUSH-IN SAFETY SOCKET, w/1.9mm LONG PIN | | | |
| USED ON | | FINISH | CHECKED | | SIZE | CAGE CODE | DWG. NO. | REV. |
| APPLICATION | | | ENGR. | | A | 43F45 | P291300 | A |
| | | | DESIGN ACTIVITY | | SCALE | 1:1 | SHEET | 1 OF 1 |