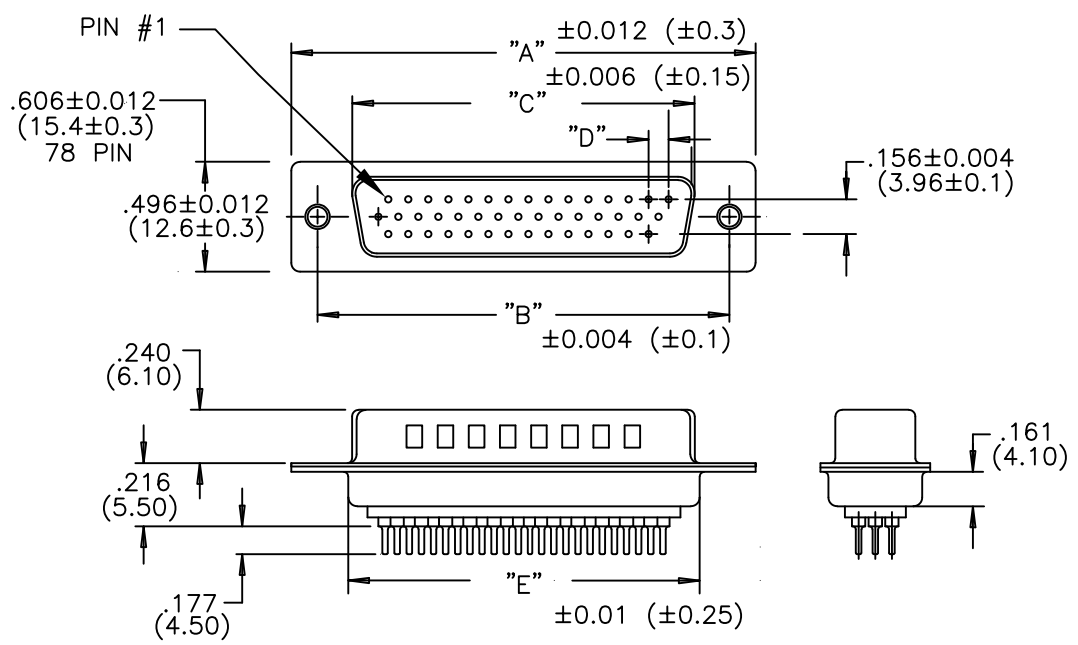


NUMBER OF CONTACTS	"A" Inch (mm)	"B" Inch (mm)	"C" Inch (mm)	"D" Inch (mm)	"E" Inch (mm)
15	1.213 (30.80)	.984 (24.99)	.666 (16.92)	.090 (2.29)	.756 (19.20)
26	1.543 (39.20)	1.312 (33.32)	.970 (24.65)	.090 (2.29)	1.091 (27.70)
44	2.087 (53.00)	1.852 (47.04)	1.512 (38.40)	.090 (2.29)	1.618 (41.10)
62	2.732 (69.40)	2.500 (63.50)	2.157 (54.80)	.095 (2.41)	2.256 (57.30)
78	2.638 (67.00)	2.406 (61.10)	2.079 (52.81)	.095 (2.41)	2.169 (55.10)

NOTE:
 MATERIAL
 HOUSING: PBT UL94V-0, BLACK
 230°C PROCESS TEMP
 CONTACT: COPPER ALLOY
 SHELL: STEEL
 FINISH
 CONTACT: FULL GOLD FLASH
 SHELL: NICKEL
 ELECTRICAL
 RATED CURRENT: 3A
 DWV: 500VAC RMS FOR 1 MIN
 INSULATOR RESISTANCE: 1000 MΩhms MIN.
 CONTACT RESISTANCE: 15 mΩhms MAX.
 ENVIRONMENT
 OPERATION TEMPERATURE: -50°C TO +100°C

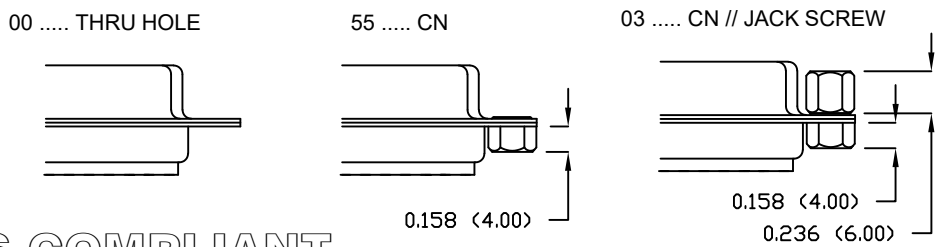


197-YYY-Y13LYY1

SERIES _____
 NUMBER OF CONTACTS _____
 GENDER _____
 1 = MALE
 2 = FEMALE (NO GROUND INDENTS)
 PC MOUNT _____
 3 = NICKEL SHELL _____

HARDWARE OPTIONS: _____
 00 = .120 MOUNTING HOLE
 55 = 4-40 CLINCH NUT (CN)
 03 = 4-40 CLINCH NUT (CN) && 4-40 JACK SCREW

PLATING: _____
 1 = GOLD FLASH



RoHS COMPLIANT

UNITS = inch (mm) DO NOT SCALE FROM DRAWING

NC
 THESE DRAWINGS AND SPECIFICATIONS ARE THE PROPERTY OF NorComp AND SHALL NOT BE REPRODUCED, COPIED OR USED AS THE BASIS FOR THE MANUFACTURE OR SALE OF APPARATUS WITHOUT WRITTEN PERMISSION.
 DRAWN: P. JENKINS
 DATE: 09/15/2005

NorComp
 SCALE: NTS SHEET 1 OF 1 REV 5
 DWG NO. 197-YYY-113LYY1