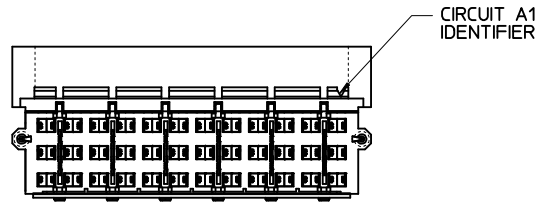
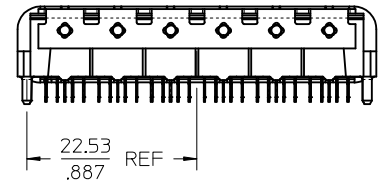
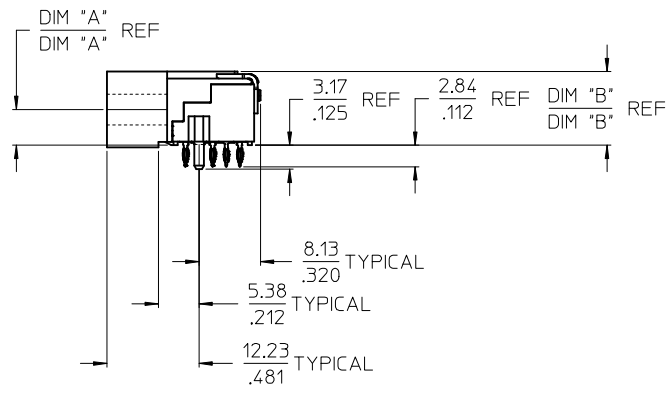
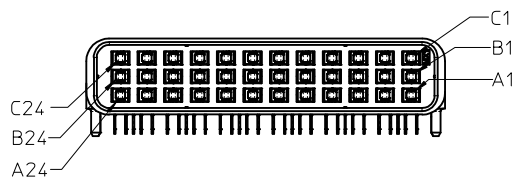
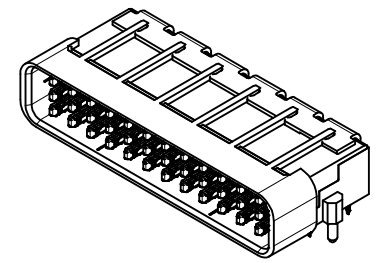
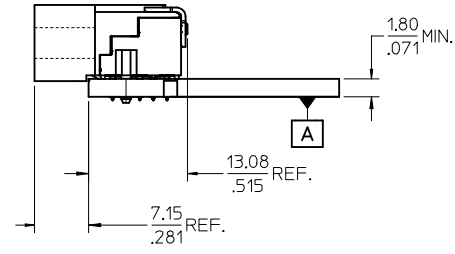
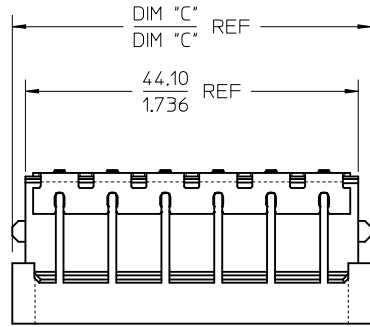


13	12	11	10	9	8	7	6	5	4	3	2	1
ITEM NUMBER	CIRCUIT SIZE	NO. OF COLUMNS 'N'	PLATING FINISH	CENTERLINE DIMENSION 'A' mm(in)	O/A HEIGHT DIMENSION 'B' mm(in)	O/A LENGTH DIMENSION 'C' mm(in)	PEG TO PEG DIMENSION 'D' mm(in)	FIRST-LAST DIMENSION 'E' mm(in)				
75018-5100	72	12	FINISH 1	4.74 (.187)	9.78 (.385)	47.50 (1.870)	45.00 (1.722)	40.00 (1.575)				

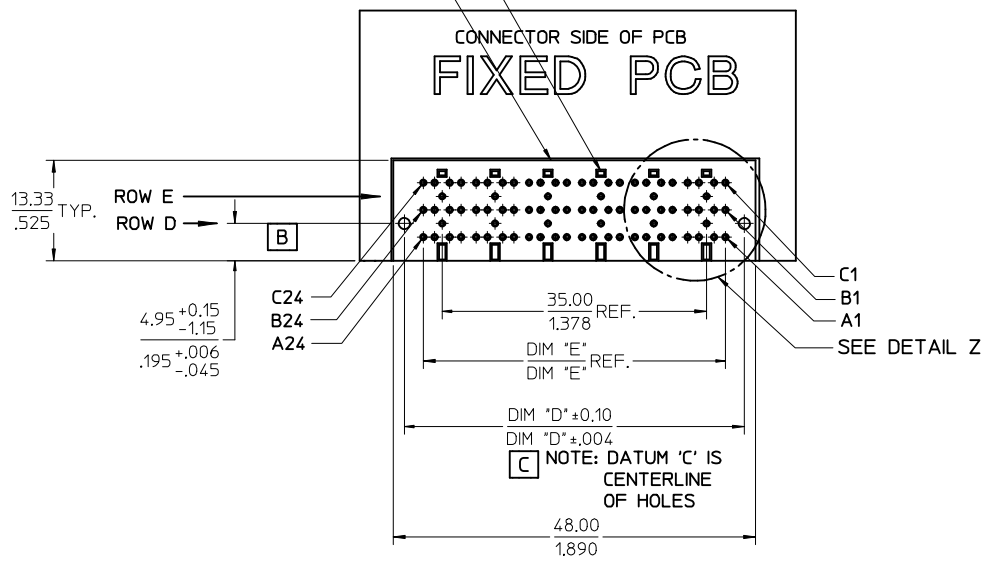


- NOTES:
- 1) MATERIALS:
HOUSING - LIQUID CRYSTAL POLYMER, UL94 V-0
WAFER DIELECTRIC - LIQUID CRYSTAL POLYMER, UL94 V-0
CONTACT - COPPER ALLOY
 - 2) FINISHES: SEE SHEET 2
 - 3) PRODUCT SPECIFICATION: THIS PART CONFORMS TO MOLEX SPECIFICATION PS-75018-001.
 - 4) PACKAGING SPECIFICATION: THIS PART TO BE PACKAGED PER SPECIFICATION PK-75020-030.
 - 5) APPLICATION SPECIFICATION: THIS PART TO BE APPLIED PER SPECIFICATION PS-75018-001, APPLICATION TOOL AND INSTRUCTIONS PER AS-75018-001.
 - 6) MATING INFORMATION
THIS PART MATES WITH 75019-XXXX.
WILL MATE WITH MAXIMUM 1.27mm MIS-ALIGNMENT.
WILL MATE WITH MAXIMUM 0.5° MIS-ALIGNMENT.
 - 7) FOR CIRCUIT DESIGNATION SEE SHEET 3
 - 8) FOR PCB INFORMATION SEE SHEET 3
 - 9) CIRCUITS IN THIS ZONE HAVE BEEN OMITTED TO SIMPLIFY THE MODEL. ACTUAL PRODUCT IS FULLY LOADED WITH TERMINALS.
 - 10) APPLICATION TOOLING KEEP OUT AREA, NO COMPONENTS ALLOWED IN THIS AREA.
 - 11) CONFORMS TO MOLEX COSMETIC SPECIFICATION PS-45499-002 & PS-45499-003, CLASS C.
 - 12) MARKING: PART NUMBER, MOLEX LOGO, DATE CODE
 - 13) RECOMMENDED DRILL SIZE 0.66±0.03 TO YIELD FINISHED PLATED THROUGH HOLE OF 0.55±0.005

REMOVED 75018-6100 EC NO: UCP2015-1948 DRWN:TIBARRA 2014/11/07 CHKD:MPHOFF 2014/11/07 APPR:SMILLER 2014/11/11	DESCRIPTION	QUALITY SYMBOLS	GENERAL TOLERANCES (UNLESS SPECIFIED)		DIMENSION STYLE		SCALE	DESIGN UNITS	THIRD ANGLE PROJECTION		
			mm	INCH	MM/IN		2:1	METRIC			
REV B		=0 =0 =0	4 PLACES	± ---	± ---	DRAWN BY	DATE	TITLE PLATEAU HS DOCK FIXED CONNECTOR NO GROUND FINGER molex DOCUMENT NO. SD-75018-5100 SHEET NO. 1 OF 2			
			3 PLACES	± ---	± .005	CHECKED BY	DATE				
			2 PLACES	± 0.13	± .01	TIBARRA	2014/09/09				
			1 PLACE	± 0.25	± ---	APPROVED BY	DATE				
			0 PLACE	±	±	SMILLER	2014/09/22				
			ANGULAR ±1/2°		MATERIAL NO.						
			DRAFT WHERE APPLICABLE MUST REMAIN WITHIN DIMENSIONS		SEE TABLE						
					SIZE C		THIS DRAWING CONTAINS INFORMATION THAT IS PROPRIETARY TO MOLEX INCORPORATED AND SHOULD NOT BE USED WITHOUT WRITTEN PERMISSION				

1) PLATING FINISHES:
 FINISH 1:
 CONTACT INTERFACE
 0.76 MICROMETERS/30 MICROINCHES MINIMUM SELECT GOLD
 NICKEL UNDERPLATE OVERALL
 COMPLIANT INTERFACE
 0.76 MICROMETERS/30 MICROINCHES MINIMUM SELECT MATTE-TIN OVER
 NICKEL UNDERPLATE OVERALL
 HOUSING
 3.81 MICROMETERS/150 MICROINCHES MINIMUM NICKEL OVER
 COPPER UNDERPLATE OVERALL

NO EXPOSED TRACES ON
 SURFACE OF PCB IN
 CONNECTOR STAND OFF LOCATIONS
 CONNECTOR KEEP OUT AREA



SEE SHEET 1 EC NO: UCP2015-1948 DRAWN: TIBARRA 2014/11/07 CHKD: MPOFF 2014/11/07 APPR: SMILLER 2014/11/11	QUALITY SYMBOLS 	GENERAL TOLERANCES (UNLESS SPECIFIED)		DIMENSION STYLE MM/IN	SCALE 2:1	DESIGN UNITS METRIC	THIRD ANGLE PROJECTION	
				DRAWN BY RWHIPPLE	DATE 2014/09/09	TITLE PLATEAU HS DOCK FIXED CONNECTOR NO GROUND FINGER		
				CHECKED BY TIBARRA	DATE 2014/09/09			
				APPROVED BY SMILLER	DATE 2014/09/22			
		MATERIAL NO. SEE TABLE		DOCUMENT NO. SD-75018-5100	SHEET NO. 2 OF 2			
DRAFT WHERE APPLICABLE MUST REMAIN WITHIN DIMENSIONS		ANGULAR $\pm 1/2^\circ$		THIS DRAWING CONTAINS INFORMATION THAT IS PROPRIETARY TO MOLEX INCORPORATED AND SHOULD NOT BE USED WITHOUT WRITTEN PERMISSION				