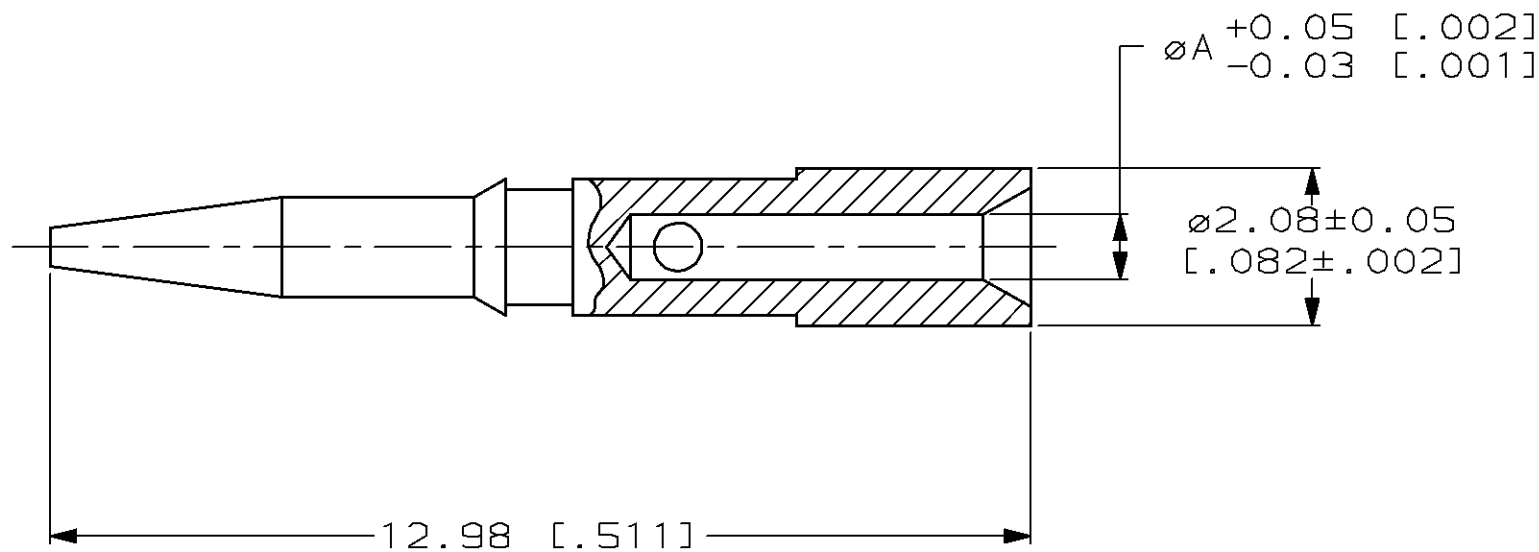


THIS DRAWING IS UNPUBLISHED. RELEASED FOR PUBLICATION, 19 .
 © COPYRIGHT 19 BY AMP INCORPORATED. ALL INTERNATIONAL RIGHTS RESERVED.

LOC	DIST	P	F	REVISIONS				
				ZONE	LTR	DESCRIPTION	DATE	APPD
AJ	16	✓	✓		A	REV & REDRAWN ADD 1-0,1-1,1-3,1-4,1-6 & 1-7	6-11-90	MS
		✓	✓		B	REV PER AJ-4992	2-20-91	JL
					C	REVISED PER 0503-0666-97	11-20-97	JG

- ① BRASS PER QQ-B-626
- ② TIN PLATE PER ASTM-B-545
- ③ SILVER PLATE PER QQ-S-365
- ④ 0.76µm [.000030] MIN GOLD PLATE PER MIL-G-45204 OVER
0.76µm [.000030] MIN NICKEL PLATE PER QQ-N-290



1.12 [.044]	③	1-222246-7
1.12 [.044]	④	1-222246-6
0.46 [.018]	③	1-222246-4
0.46 [.018]	④	1-222246-3
0.61 [.024]	③	1-222246-1
0.61 [.024]	④	1-222246-0
0.79 [.031]	②	222246-8
0.99 [.039]	②	222246-7
0.79 [.031]	③	222246-6
0.99 [.039]	③	222246-5
0.79 [.031]	④	222246-4
0.99 [.039]	④	222246-2

		A DIA	FINISH	PART NO
DO NOT SCALE PRINT. UNLESS SPECIFIED DIMENSIONS IN mm [INCHES] TOLERANCES ON: 2 PLC DEC ± 0.13 [.005] 3 PLC DEC ± - ANGLES ± -		DR M. SNEED 6-4-90	AMP AMP Incorporated Harrisburg, PA 17105-3608	
MATERIAL ①		CHK D.LAMAN 7-10-90		
FINISH ② THRU ④		APPD M.PHILLIPS 7-12-90	NAME CONTACT, COMMERCIAL BNC	
		APPD D.LAMAN 7-10-90	SIZE B	CAGE CODE 00779
		PRODUCT SPEC -	DRAWING NO 222246	
		APPLICATION SPEC -	SCALE 10:1	SHEET 1 OF 1
		WEIGHT -		