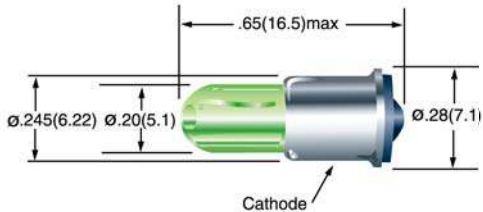


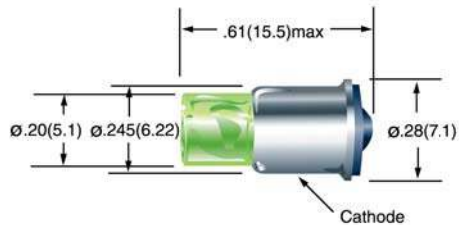
STATUS INDICATOR 15° - 50° VIEWING ANGLE



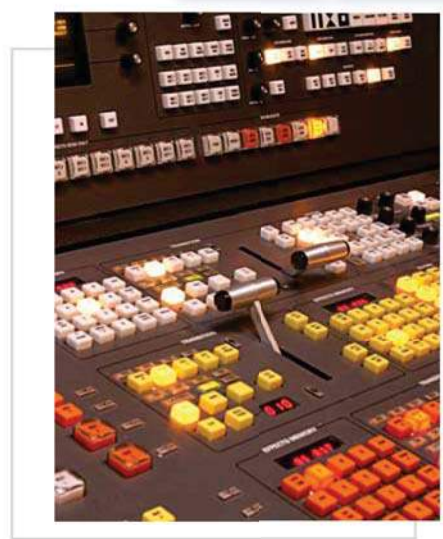
Available with Center Cathode or Bi-Polar

LED Color	Voltage	Design Current
Red	5VDC	15-22mA
Amber	6VDC	15-21mA
Green	12VDC	15-20mA
Blue	15VDC	15-20mA
Cool White	24VDC	15-17mA
Warm White	28VDC	15-16.5mA
	48VDC	9mA
	60VDC	7mA
	120VDC	3.5mA

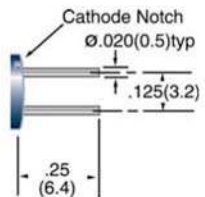
BACKLIGHT 75° VIEWING ANGLE



Available with Center Cathode or Bi-Polar



BASE OPTIONS



BP202



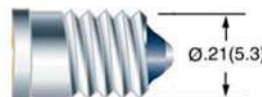
MB200



MF200



MG200



MS200



WB201

All dimensions are in inches (mm)

Tolerances: .xx"(x) ±.025"(.63)/ .xxx"(.xx)±.010"(.25)
Specifications are subject to change without notice.