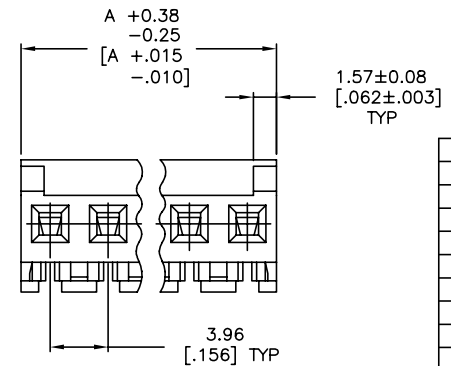
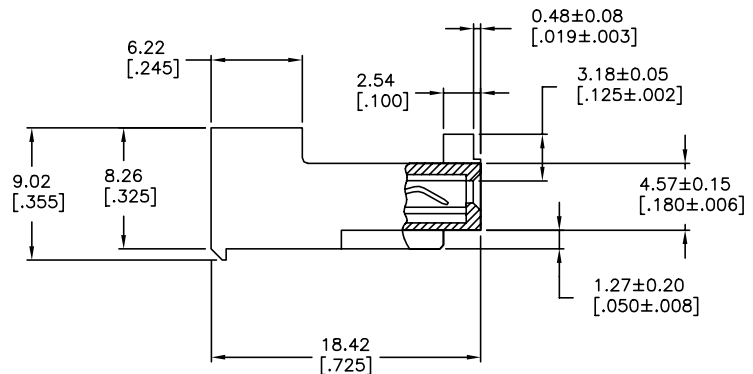
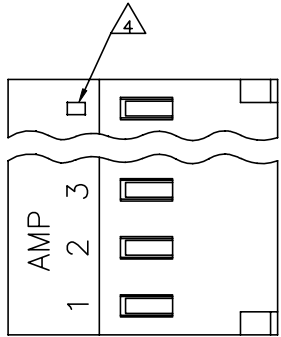


THIS DRAWING IS UNPUBLISHED. RELEASED FOR PUBLICATION  
 © COPYRIGHT - TE Connectivity Ltd. ALL RIGHTS RESERVED.

REVISIONS					
P	LTN	DESCRIPTION	DATE	DWN	APVD
E		REVISED PER ECR-20-000824	29MAY2020	PC	SW



- ⚠ MATERIAL: CONNECTOR - NYLON UL94V-2 (WHITE).  
 CONTACTS - 0.30 [.012] THICK COPPER ALLOY  
 BRIGHT-TIN LEAD 0.00203 [.000080] MIN THICK  
 FOR CONTACTS 644464-2 THRU 1-644464-4  
 MATTE WHISKER MITIGATED TIN 0.00203 [.000080]  
 MIN THICKNESS OVER NICKEL UNDERPLATE FOR  
 3-644464-2 THRU 4-644464-4
- 2. CONTACTS ACCEPT 24 AWG WIRE WITH 2.41[.095] MAX  
 INSULATION DIAMETER.
- 3. CONTACTS MUST ACCEPT 1.14±0.03 [.045±.001]  
 POST AND REMAIN LOCKED IN POSITION.
- ⚠ IDENTIFICATION NUMBER FOR LAST CIRCUIT MAY  
 NOT APPEAR ON ALL ASSEMBLIES.
- 5. DIMENSIONS IN BRACKETS ARE IN INCHES.
- 6. HOUSING FEATURES ARE: CLOSED END WITHOUT  
 LOCKING RAMP AND WITH POLARIZING TAB.
- ⚠ OBSOLETE PARTS: OBSOLETE CIS STREAMLINING PER D.RENAUD/D.SINISI
- ⚠ OBSOLETE PARTS

TIN	55.47	[2.184]	14	4-644464-4
TIN	51.51	[2.028]	13	4-644464-3
TIN	47.55	[1.872]	12	4-644464-2
TIN	43.59	[1.716]	11	4-644464-1
TIN	39.62	[1.560]	10	4-644464-0
TIN	35.66	[1.404]	9	3-644464-9
TIN	31.70	[1.248]	8	3-644464-8
TIN	27.74	[1.092]	7	3-644464-7
TIN	23.77	[.936]	6	3-644464-6
TIN	19.81	[.780]	5	3-644464-5
TIN	15.85	[.624]	4	3-644464-4
TIN	11.89	[.468]	3	3-644464-3
TIN	7.92	[.312]	2	3-644464-2

⚠ SUPERSEDED	TIN-LEAD	55.47	[2.184]	14	<del>4-644464-4</del>
⚠ SUPERSEDED	TIN-LEAD	51.51	[2.028]	13	<del>4-644464-3</del>
⚠ SUPERSEDED	TIN-LEAD	47.55	[1.872]	12	<del>4-644464-2</del>
⚠ SUPERSEDED	TIN-LEAD	43.59	[1.716]	11	<del>4-644464-1</del>
⚠ SUPERSEDED	TIN-LEAD	39.62	[1.560]	10	<del>4-644464-0</del>
⚠ SUPERSEDED	TIN-LEAD	35.66	[1.404]	9	<del>4-644464-9</del>
⚠ SUPERSEDED	TIN-LEAD	31.70	[1.248]	8	<del>4-644464-8</del>
⚠ SUPERSEDED	TIN-LEAD	27.74	[1.092]	7	<del>4-644464-7</del>
⚠ SUPERSEDED	TIN-LEAD	23.77	[.936]	6	<del>4-644464-6</del>
⚠ SUPERSEDED	TIN-LEAD	19.81	[.780]	5	<del>4-644464-5</del>
⚠ SUPERSEDED	TIN-LEAD	15.85	[.624]	4	<del>4-644464-4</del>
⚠ SUPERSEDED	TIN-LEAD	11.89	[.468]	3	<del>4-644464-3</del>
⚠ SUPERSEDED	TIN-LEAD	7.92	[.312]	2	<del>4-644464-2</del>

FINISH DIM A NO OF CIRCUITS PART NO

THIS DRAWING IS A CONTROLLED DOCUMENT. DWN: B. LEWIS 12 FEB 91  
 CHK: R. SWING 12 FEB 91  
 APVD: D. CLARK 20 FEB 91

TE Connectivity Ltd.

MTA-156 CONNECTOR ASSEMBLY,  
 24 AWG, STANDARD

PRODUCT SPEC: 108-1051  
 APPLICATION SPEC: 114-1020

SIZE: A2 CAGE CODE: 00779 DRAWING NO: 644464  
 WEIGHT: RESTRICTED TO: -

CUSTOMER DRAWING SCALE: 4:1 SHEET: 1 OF 1 REV: E