

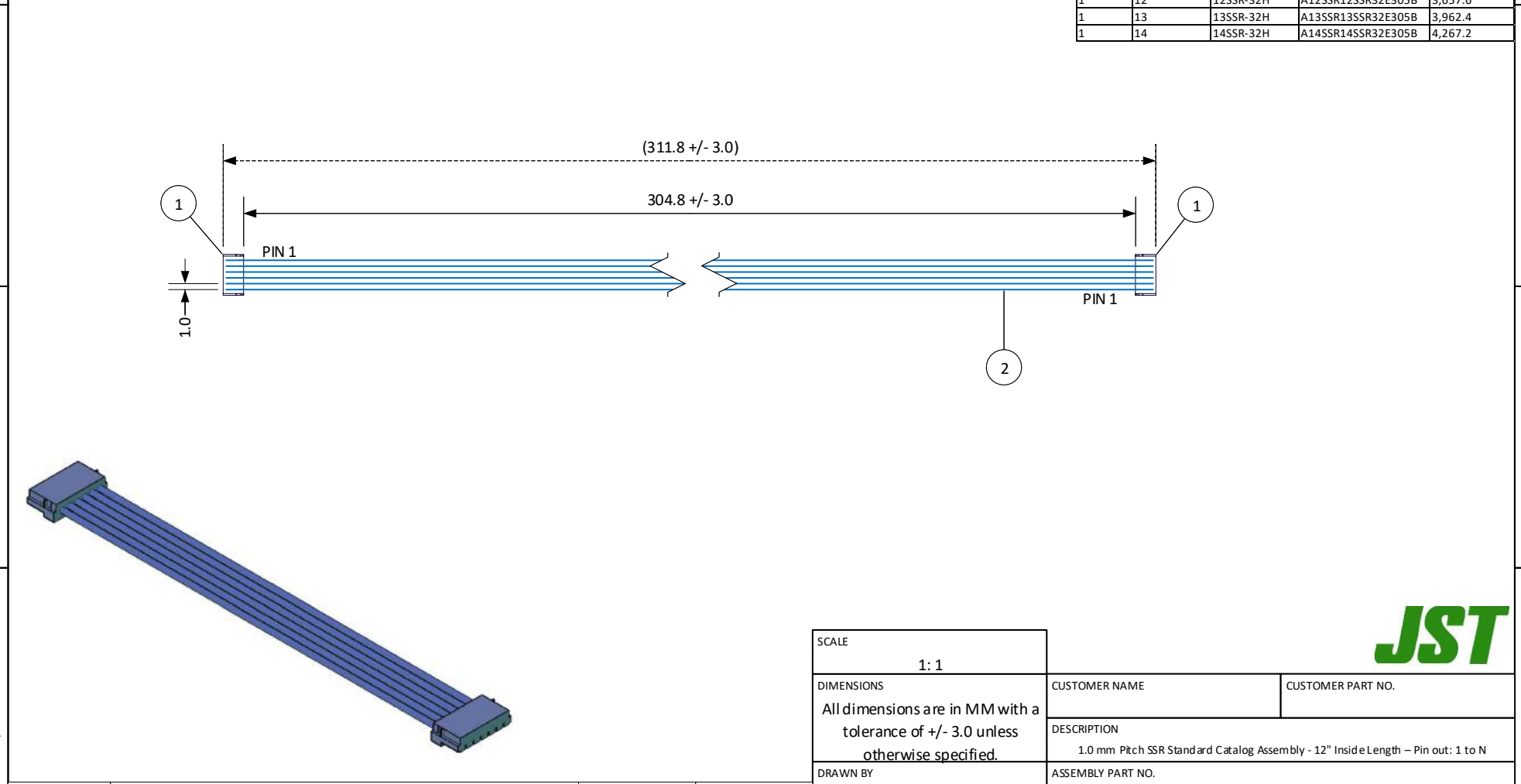
THIS DRAWING CONTAINS INFORMATION THAT IS PROPRIETARY TO J.S.T. AND SHALL NOT BE USED OR SHOWN WITHOUT WRITTEN PERMISSION.

ITEM	CONNECTOR PART NO.	DESCRIPTION	IPI CHECK	EOR CHECK	Applicable Tooling																																																																	
1	See Table 1	SSR CONNECTOR			BCD <div style="background-color: yellow; text-align: center; font-weight: bold; margin-bottom: 5px;">TABLE 1</div> <table border="1" style="width: 100%; border-collapse: collapse;"> <thead> <tr> <th style="width: 8%;">ITEM</th> <th style="width: 10%;">NUMBER OF CIRCUITS</th> <th style="width: 15%;">CONNECTOR PART NO.</th> <th style="width: 15%;">ASSEMBLY PART NUMBER</th> <th style="width: 10%;">TOTAL WIRE REQUIRED</th> </tr> </thead> <tbody> <tr><td>1</td><td>2</td><td>02SSR-32H</td><td>A02SSR02SSR32E305B</td><td>609.6</td></tr> <tr><td>1</td><td>3</td><td>03SSR-32H</td><td>A03SSR03SSR32E305B</td><td>914.4</td></tr> <tr><td>1</td><td>4</td><td>04SSR-32H</td><td>A04SSR04SSR32E305B</td><td>1,219.2</td></tr> <tr><td>1</td><td>5</td><td>05SSR-32H</td><td>A05SSR05SSR32E305B</td><td>1,524.0</td></tr> <tr><td>1</td><td>6</td><td>06SSR-32H</td><td>A06SSR06SSR32E305B</td><td>1,828.8</td></tr> <tr><td>1</td><td>8</td><td>08SSR-32H</td><td>A08SSR08SSR32E305B</td><td>2,438.4</td></tr> <tr><td>1</td><td>9</td><td>09SSR-32H</td><td>A09SSR09SSR32E305B</td><td>2,743.2</td></tr> <tr><td>1</td><td>10</td><td>10SSR-32H</td><td>A10SSR10SSR32E305B</td><td>3,048.0</td></tr> <tr><td>1</td><td>11</td><td>11SSR-32H</td><td>A11SSR11SSR32E305B</td><td>3,352.8</td></tr> <tr><td>1</td><td>12</td><td>12SSR-32H</td><td>A12SSR12SSR32E305B</td><td>3,657.6</td></tr> <tr><td>1</td><td>13</td><td>13SSR-32H</td><td>A13SSR13SSR32E305B</td><td>3,962.4</td></tr> <tr><td>1</td><td>14</td><td>14SSR-32H</td><td>A14SSR14SSR32E305B</td><td>4,267.2</td></tr> </tbody> </table>	ITEM	NUMBER OF CIRCUITS	CONNECTOR PART NO.	ASSEMBLY PART NUMBER	TOTAL WIRE REQUIRED	1	2	02SSR-32H	A02SSR02SSR32E305B	609.6	1	3	03SSR-32H	A03SSR03SSR32E305B	914.4	1	4	04SSR-32H	A04SSR04SSR32E305B	1,219.2	1	5	05SSR-32H	A05SSR05SSR32E305B	1,524.0	1	6	06SSR-32H	A06SSR06SSR32E305B	1,828.8	1	8	08SSR-32H	A08SSR08SSR32E305B	2,438.4	1	9	09SSR-32H	A09SSR09SSR32E305B	2,743.2	1	10	10SSR-32H	A10SSR10SSR32E305B	3,048.0	1	11	11SSR-32H	A11SSR11SSR32E305B	3,352.8	1	12	12SSR-32H	A12SSR12SSR32E305B	3,657.6	1	13	13SSR-32H	A13SSR13SSR32E305B	3,962.4	1	14	14SSR-32H	A14SSR14SSR32E305B	4,267.2
ITEM	NUMBER OF CIRCUITS	CONNECTOR PART NO.	ASSEMBLY PART NUMBER	TOTAL WIRE REQUIRED																																																																		
1	2	02SSR-32H	A02SSR02SSR32E305B	609.6																																																																		
1	3	03SSR-32H	A03SSR03SSR32E305B	914.4																																																																		
1	4	04SSR-32H	A04SSR04SSR32E305B	1,219.2																																																																		
1	5	05SSR-32H	A05SSR05SSR32E305B	1,524.0																																																																		
1	6	06SSR-32H	A06SSR06SSR32E305B	1,828.8																																																																		
1	8	08SSR-32H	A08SSR08SSR32E305B	2,438.4																																																																		
1	9	09SSR-32H	A09SSR09SSR32E305B	2,743.2																																																																		
1	10	10SSR-32H	A10SSR10SSR32E305B	3,048.0																																																																		
1	11	11SSR-32H	A11SSR11SSR32E305B	3,352.8																																																																		
1	12	12SSR-32H	A12SSR12SSR32E305B	3,657.6																																																																		
1	13	13SSR-32H	A13SSR13SSR32E305B	3,962.4																																																																		
1	14	14SSR-32H	A14SSR14SSR32E305B	4,267.2																																																																		
2	UL1571, 32 AWG	BLUE																																																																				

BCD

TABLE 1

ITEM	NUMBER OF CIRCUITS	CONNECTOR PART NO.	ASSEMBLY PART NUMBER	TOTAL WIRE REQUIRED
1	2	02SSR-32H	A02SSR02SSR32E305B	609.6
1	3	03SSR-32H	A03SSR03SSR32E305B	914.4
1	4	04SSR-32H	A04SSR04SSR32E305B	1,219.2
1	5	05SSR-32H	A05SSR05SSR32E305B	1,524.0
1	6	06SSR-32H	A06SSR06SSR32E305B	1,828.8
1	8	08SSR-32H	A08SSR08SSR32E305B	2,438.4
1	9	09SSR-32H	A09SSR09SSR32E305B	2,743.2
1	10	10SSR-32H	A10SSR10SSR32E305B	3,048.0
1	11	11SSR-32H	A11SSR11SSR32E305B	3,352.8
1	12	12SSR-32H	A12SSR12SSR32E305B	3,657.6
1	13	13SSR-32H	A13SSR13SSR32E305B	3,962.4
1	14	14SSR-32H	A14SSR14SSR32E305B	4,267.2



<p>SCALE 1: 1</p> <p>DIMENSIONS All dimensions are in MM with a tolerance of ± 3.0 unless otherwise specified.</p> <p>DRAWN BY STEVEN PILKINGTON</p> <p>CHECKED BY JUSTIN BAKER</p>	<p>CUSTOMER NAME CUSTOMER PART NO.</p> <p>DESCRIPTION 1.0 mm Pitch SSR Standard Catalog Assembly - 12" Inside Length - Pin out: 1 to N</p> <p>ASSEMBLY PART NO. SEE TABLE 1</p> <p>DRAWING NO. & REVISION GAM-195</p> <p>REVISED 6/14/2016</p>
--	--

REV.	DESCRIPTION	DATE	BY