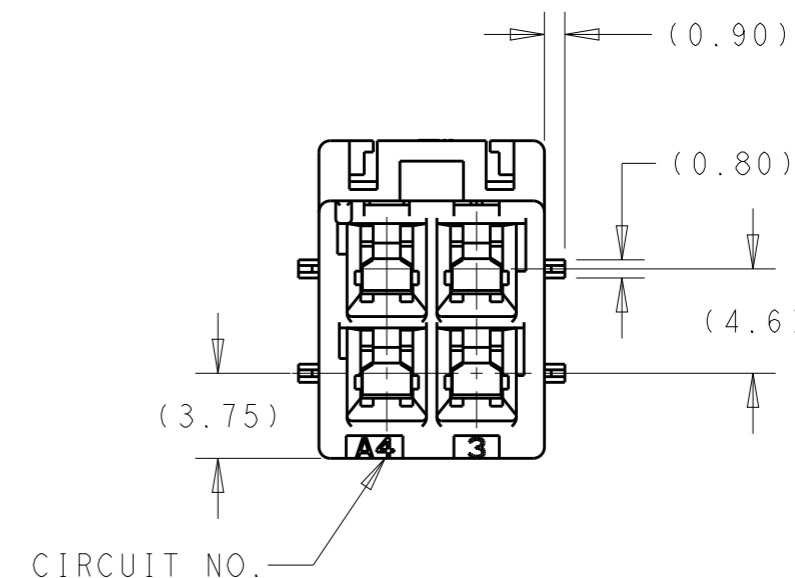
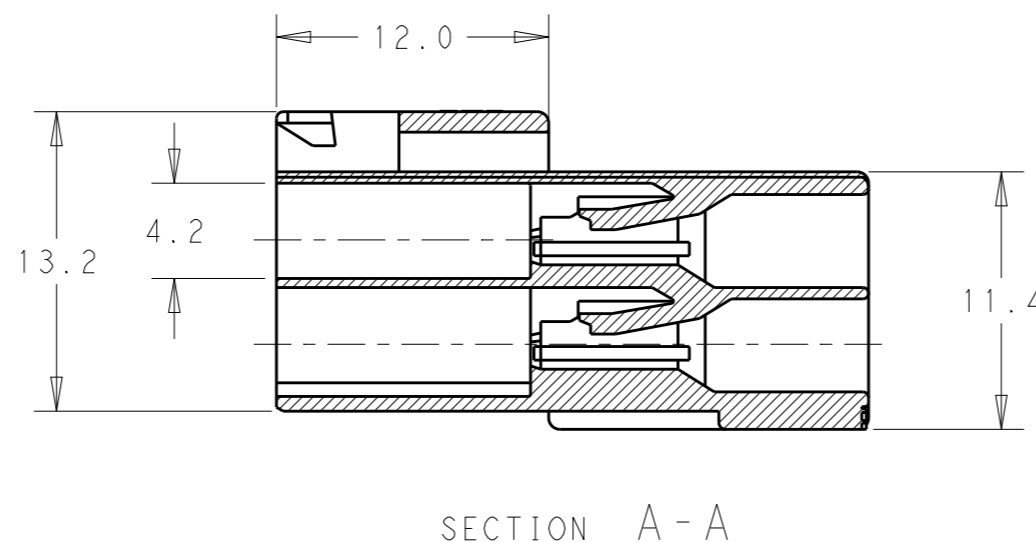
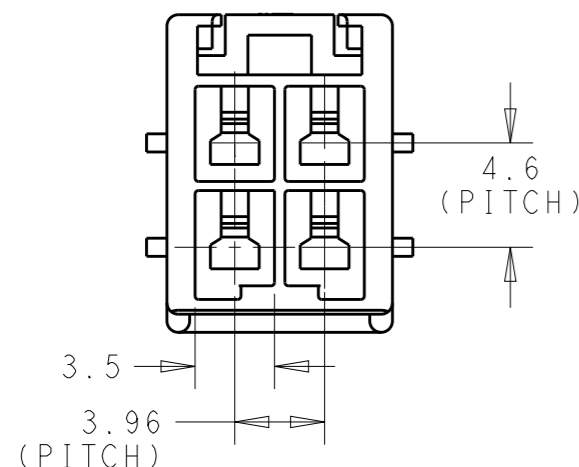
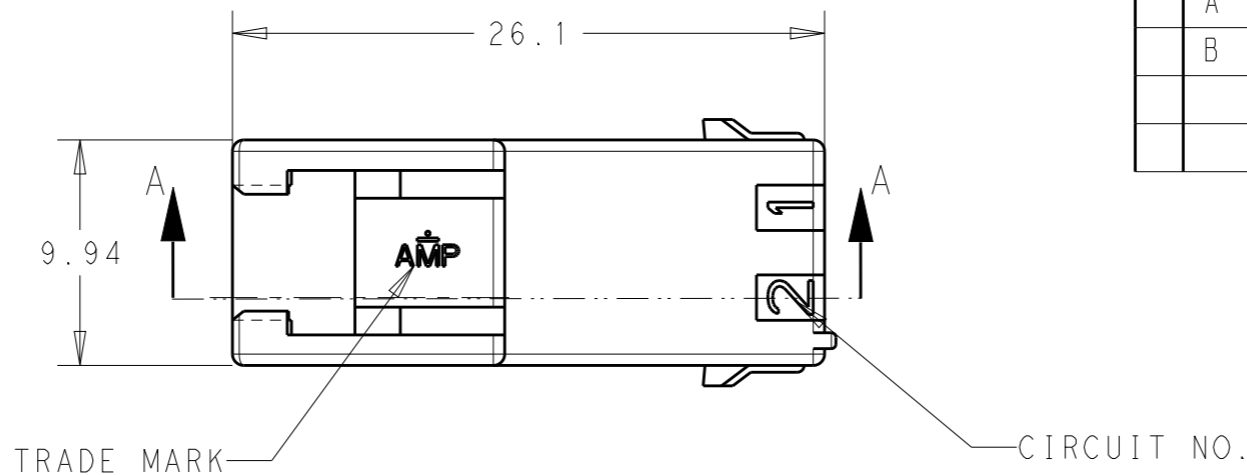


THIS DRAWING IS UNPUBLISHED. RELEASED FOR PUBLICATION 20
 © COPYRIGHT 20 BY - ALL RIGHTS RESERVED.

REVISIONS					
P	LTR	DESCRIPTION	DATE	DWN	APVD
	A	RELEASED	02MAR'09	SC	JK
	B	REVISED PER ECR-19-009721	01JUL2019	M.G	D.Z



NOTE

- 1 THIS HOUSING ACCEPTS TAB TERMINAL:
 -TAB CONTACT: 177917-□ (AWG#16-#20)
 177916-□ (AWG#22-#26)
- 2 MATING CONN. P/N
 -PLUG HSG: □-368575-□
 -REC CONTACT: 177915-□ (AWG#20-#16)
 177914-□ (AWG#26-#22)
- 3 APPLICABLE DOUBLE LOCK PLATE : □-368590-1
- 4 GENERAL TOLERANCES: ±0.3

5 ALL PARTS COMPLY WITH GLOW WIRE REQUIREMENT FOR PARTS OF NON-METALLIC MATERIAL SUPPORTING A CURRENT-CARRYING CONNECTION DETAILED IN IEC 60335-1, SECTION 30(GWT)

PA66 UL94V-0	BLUE	1-368587-6
	YELLOW	1-368587-4
	RED	1-368587-2
	NATURAL	1-368587-1
PA66 UL94V-2	BLUE	368587-6
	YELLOW	368587-4
	RED	368587-2
	NATURAL	368587-1
MATERIAL	COLOR	PART NUMBER

THIS DRAWING IS A CONTROLLED DOCUMENT.

DIMENSIONS:	TOLERANCES UNLESS OTHERWISE SPECIFIED:
mm	
	0 PLC ±-
	1 PLC ±-
	2 PLC ±-
	3 PLC ±-
	4 PLC ±-
	ANGLES ±-
	FINISH -

MATERIAL SEE TABLE 5

DWN	SC KIM
CHK	BW KANG
APVD	JK SONG
PRODUCT SPEC	108-5410
APPLICATION SPEC	114-5175
WEIGHT	-

STE TE Connectivity

NAME: PDL 4P CAP HSG 3.96mm D/R F/H (GWT)

SIZE	CAGE CODE	DRAWING NO	RESTRICTED TO
A3	00779	C-368587	-

CUSTOMER DRAWING SCALE 3:1 SHEET 1 OF 1 REV B