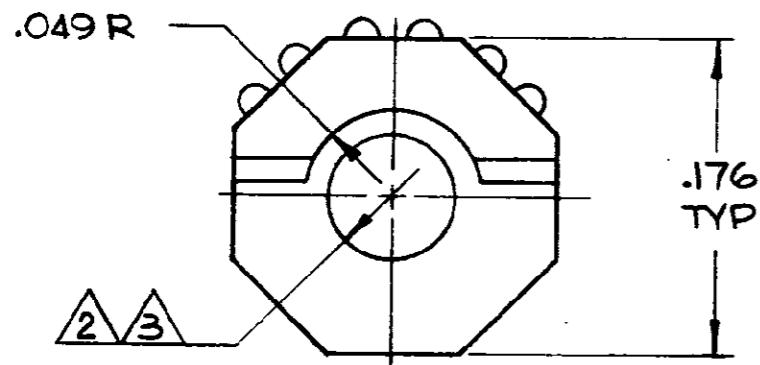


© COPYRIGHT 1980 BY AMP INCORPORATED, HARRISBURG, PA.
 ALL INTERNATIONAL RIGHTS RESERVED. AMP INCORPORATED PRODUCTS
 COVERED BY U. S. AND FOREIGN PATENTS AND/OR PATENTS PENDING.

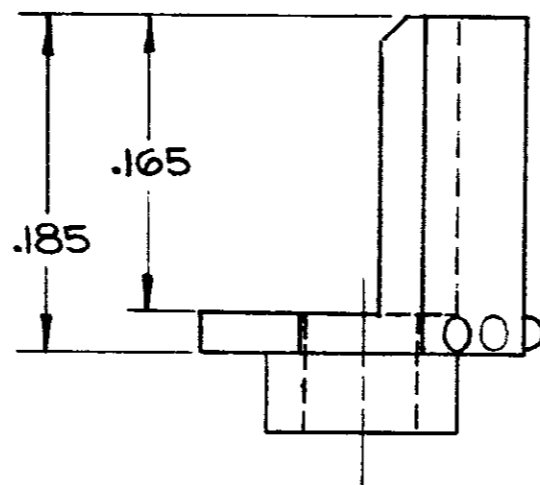
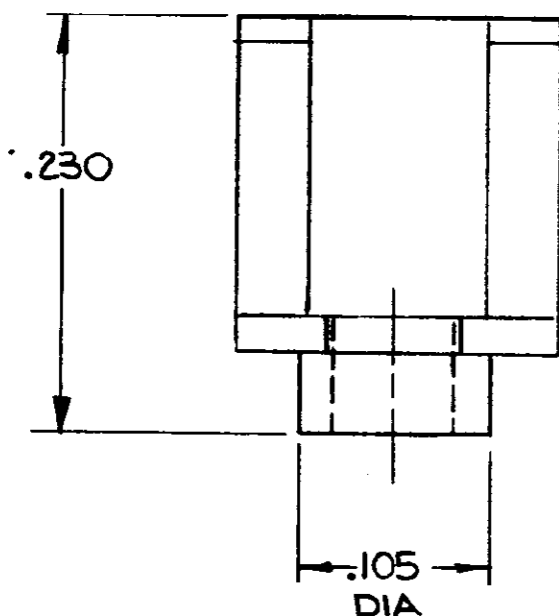
531963-1 I. AS SHOWN
 531963-2 I. RECEPTACLE KEY
 KIT INCLUDES.

		1		LOC AB	DIST 39
REVISIONS					
P	F	ZONE	LTR	DESCRIPTION	DATE
			0	WAS 5085-259	
				DATE	APPROVED



QTY	DESCRIPTION
2	531963-1 KEYS
2	22987-3 (5ST PASSIVATED, SELF-TAPPING, TYPE F, PAN HEAD #2-56x1/4" LONG SCREW) \triangle

1. KEY PRESS-FITS INTO MINI-BOX PIN HEADER AND/OR RECEPTACLES USING TOOL #91117-2
- \triangle SCREWS ARE USED TO MOUNT KEYED RECEPTACLE TO P.C. BOARD



UNLESS OTHERWISE SPECIFIED DIMENSIONS ARE IN INCHES. TOLERANCES ON: DECIMALS ± ANGLES ±		CONTRACT NO DR <i>IRSHAFFNER</i> 10/3/80	AMP AMP INCORPORATED Harrisburg, Pa.	
MATERIAL POLYESTER COLOR-WHITE	CHK <i>R. D. ...</i>	APPD <i>R. D. ...</i>	NAME EXTERNAL KEY FOR MINI-BOX CONNECTOR, STD.	
FINISH	APPD <i>S. Parsons</i> 10-3-80	DSGN APPD	SIZE B	CODE IDENT NO 00779
	OTHER APPD		DRAWING NO 531963	
			SCALE 10X1	SHEET 1 OF 1