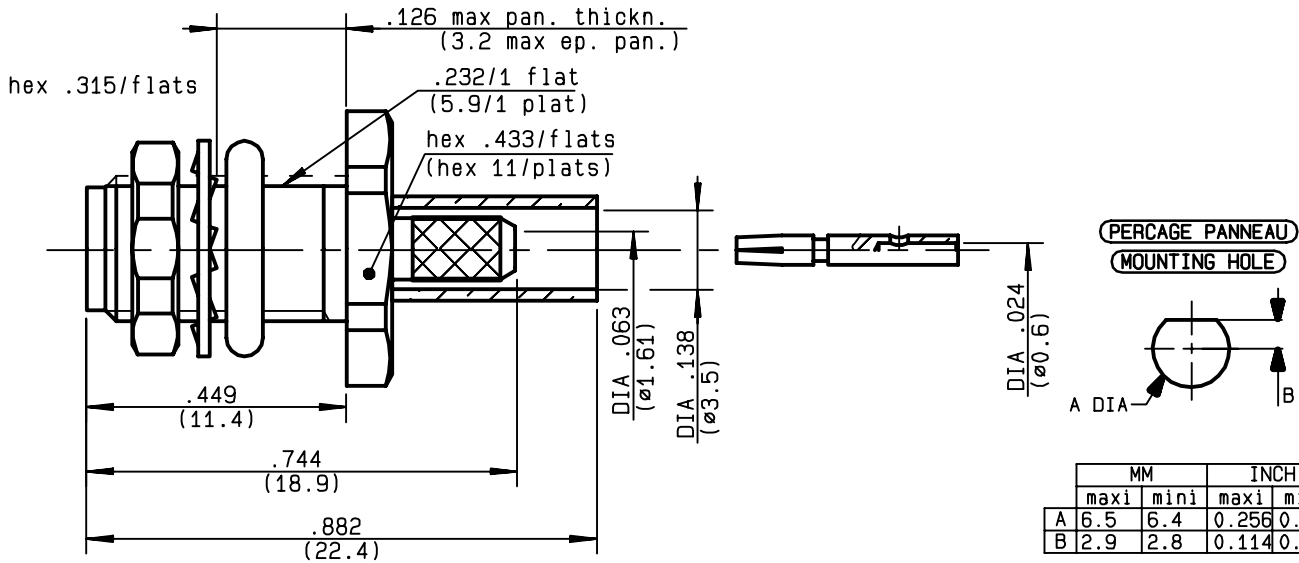


**STRAIGHT BULKHEAD JACK PANEL SEAL  
CRIMP TYPE - CABLE 2.6/50 D**

**R125.322.030**  
**SERIES SMA**



NOMINAL IMPEDANCE	<b>50</b> Ω
FREQUENCY RANGE	<b>0-12.4</b> GHz
TEMPERATURE RATING	<b>-65/+165</b> °C
V.S.W.R	<b>1.15</b> + <b>.02</b> x F(GHz)Maxi
RF INSERTION LOSS	<b>0.06</b> √F(GHz) dB Maxi
VOLTAGE RATING	<b>250</b> Veff Maxi
DIELECTRIC WITHSTANDING VOLTAGE	<b>750</b> Veff Mini
INSULATION RESISTANCE	<b>5000</b> MΩMini
HERMETIC SEAL	<b>NA</b> Atm.cm <sup>3</sup> /s
LEAKAGE (pressurized only)	<b>NA</b>
MECHANICAL DURABILITY	<b>500</b> Cycles
WEIGHT	<b>3.77</b> gr
SPECIFICATION	

CABLES : **K02252D**  
**RD 316**

OTHERS CHARACTERISTICS

CABLE RETENTION	<b>110</b>	N Mini
CENTER CONTACT RETENTION		
Axial force - mating end	<b>15</b>	N Mini
Axial force - opposite end	<b>15</b>	N Mini
Torque	<b>NA</b>	cm.N Mini
RECOMMENDED TORQUES		
Mating	<b>NA</b>	cm.N
Panel nut	<b>150</b>	cm.N
Clamp nut	<b>NA</b>	cm.N

CONNECTOR PARTS MATERIALS

BODY	STAINLESS STEEL
OUTER CONTACT	
CENTER CONTACT	BERYLLIUM COPPER
INSULATOR	PTFE
GASKET	SILICONE RUBBER
OTHERS PIECES	STAINLESS STEEL

FINISH

(all values are given in micrometers)

GOLD 0.8 OVER NICKEL 2
GOLD 1.3 OVER NICKEL 2
-
-
GOLD 0.8 OVER NICKEL 2

ISSUE

**9840C00**

CREATION DATE

**13/07/1994**

FILE PART-NUMBER

**92-0132-795**



**RADIALL®**

LELEU

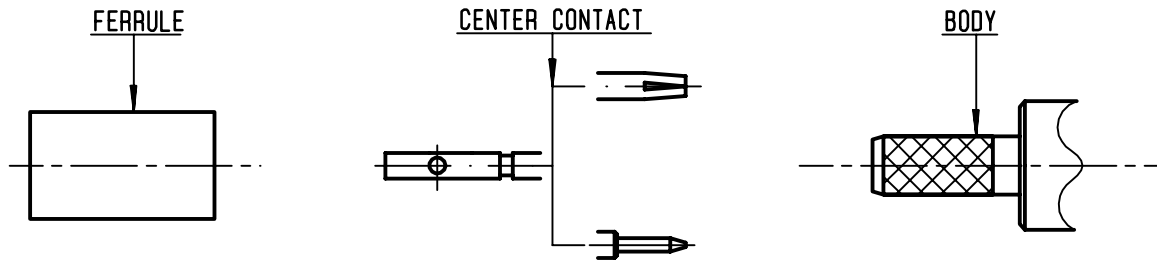
The information given here is subject to change without notice.  
Design changes may be in order to improve the product .

*Connect to the future*



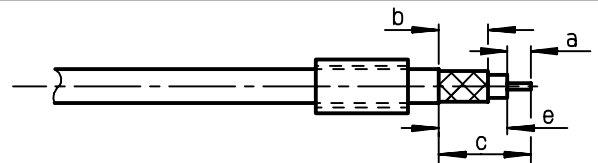
**R125.322.030**

ISSUE **9840C00** SERIES **SMA**



①

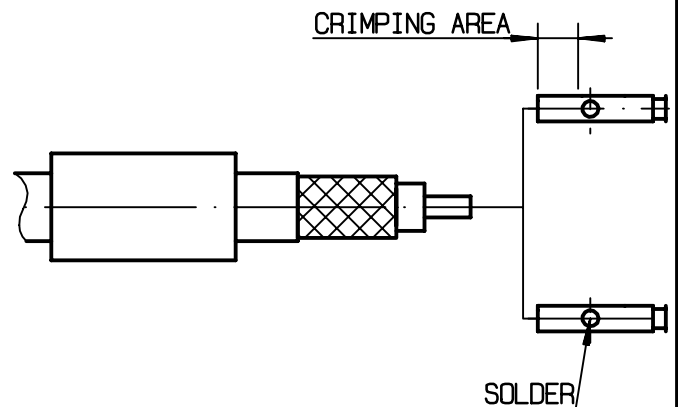
Slide onto the cable the ferrule  
Strip the cable .  
-  
-



Stripping	a	b	c	d	e
inch	0.13	0.236	0.429	0	0.299
mm	3.3	6	10.9		7.6

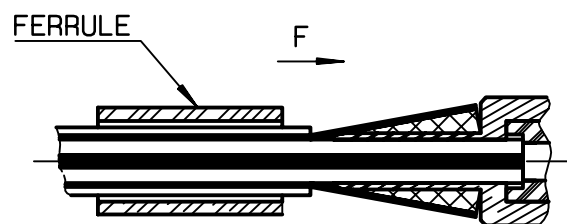
②

2-1 If crimping: Slide on the centre contact until it bottoms against cable dielectric. Crimp centre contact.  
Crimping tool: R282 281 000 + positionner R282 967 012 - position 5  
-  
2-2 If solder: Slide the centre contact until it bottoms against cable dielectric. Solder it.



③

Fan the braid .  
Slide cable into the body until it bottoms against insulator and contact snaps into insulator. Slide the ferrule over the braid. (in direction F ).



④

Crimp the ferrule with crimping tool R 282 271 000 ( Hex. : .151 ) or crimping tool R282 293 000 ( M22520/5-01) + dies R282 235 037 ( M22520/5-37)  
Cut the excess of braid .  
-  
-  
-  
-

