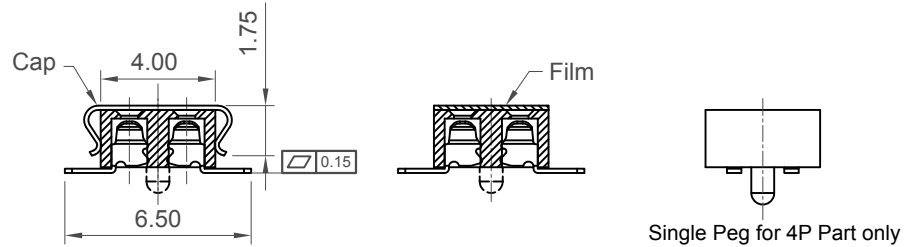
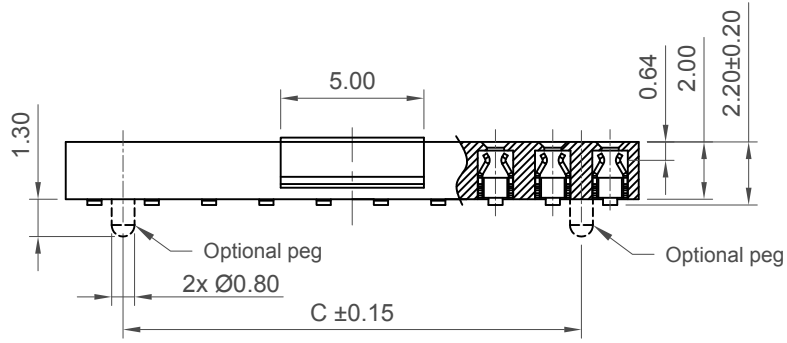
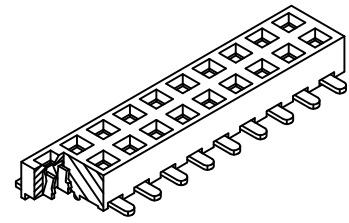
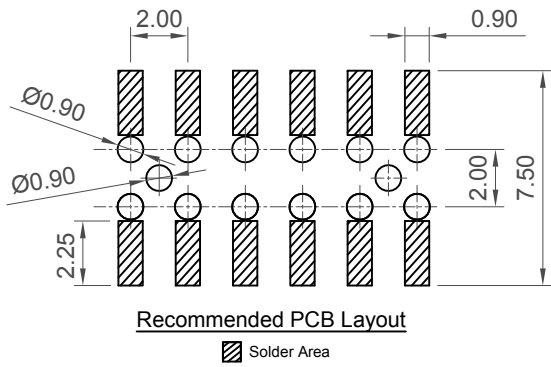
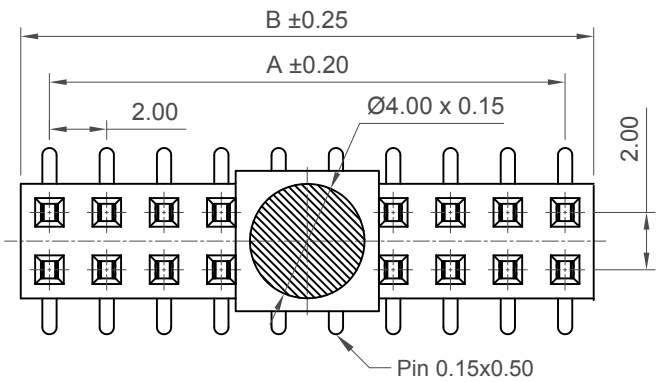


H  
G  
F  
E  
D  
C  
B  
A



Contacts	Dimensions		
	A	B	C
4	2.0	4.0	/
6	4.0	6.0	2.0
8	6.0	8.0	4.0
10	8.0	10.0	6.0
12	10.0	12.0	8.0
14	12.0	14.0	10.0
16	14.0	16.0	12.0
18	16.0	18.0	14.0
20	18.0	20.0	16.0
22	20.0	22.0	18.0
24	22.0	24.0	20.0
26	24.0	26.0	22.0
28	26.0	28.0	24.0
30	28.0	30.0	26.0
32	30.0	32.0	28.0
34	32.0	34.0	30.0
36	34.0	36.0	32.0
38	36.0	38.0	34.0
40	38.0	40.0	36.0
42	40.0	42.0	38.0
44	42.0	44.0	40.0
46	44.0	46.0	42.0
48	46.0	48.0	44.0
50	48.0	50.0	46.0
52	50.0	52.0	48.0
54	52.0	54.0	50.0
56	54.0	56.0	52.0
58	56.0	58.0	54.0
60	58.0	60.0	56.0
62	60.0	62.0	58.0
64	62.0	64.0	60.0
66	64.0	66.0	62.0
68	66.0	68.0	64.0
70	68.0	70.0	66.0
72	70.0	72.0	68.0
74	72.0	74.0	70.0
76	74.0	76.0	72.0
78	76.0	78.0	74.0
80	78.0	80.0	76.0

**Specifications 规格**

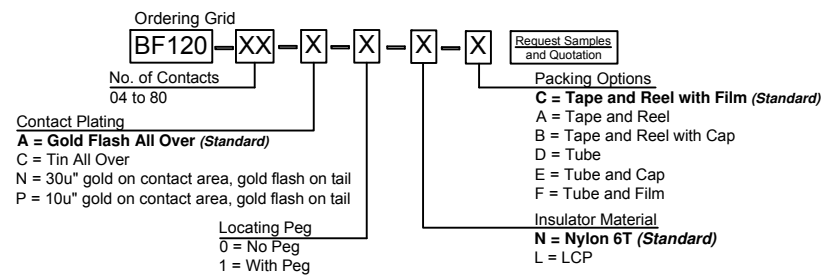
**Material 物料**  
 Contact 端子物料: Phosphor Bronze  
 Insulator 绝缘体物料: Standard 标准物料: Polyamide 聚酰胺, Nylon 6T, UL 94V-0  
 Options 可选物料: Polymer 聚合物, LCP, UL 94V-0

**Electrical 电气**  
 Current Rating 电流额定值: 2 Amp Per Pin  
 Insulation Resistance 绝缘电阻值: 1000 MΩ min  
 Contact Resistance 接触电阻值: 20 mΩ max.  
 Dielectric Withstand Voltage 耐压: AC 500 V

**Mechanical & Environmental 机械 & 环境**  
 Operating Temperature 工作温度: -40°C to +105°C

**Soldering Process 可焊性:**  
 Nylon 6T (Standard 标准物料)  
 IR Reflow 回流焊: 260°C for 10 sec.  
 Wave 波峰焊: 230°C for 5-10 sec.  
 Manual Solder 人工焊接: 350°C for 3-5 sec.  
 LCP (Option 可选物料)  
 IR Reflow 回流焊: 260°C for 10 sec.  
 Wave 波峰焊: 250°C for 5-10 sec.  
 Manual Solder 人工焊接: 350°C for 3-5 sec.

**Mates with 配套之公头**  
 (Subject to pin length 在端子长度适合的条件下):  
 BF030 BF045 BF050 BF055  
 BF060 BF135 BF140 BF145



Part Number		Product Description	
BF120		2.00mm Pitch Socket	
Drawing Date		Dual Row, Surface Mount, Dual Entry	
31st October 2007			
By	CC	Tolerances (Except as Noted)	Units:
Detail	BF120 G PCN	Length X. ± 0.30 X.X ± 0.20 X.XX ± 0.15 X.XXX ± 0.10	Metric (mm)
Revision	G2	Angle X° ± 5° X.X° ± 2° X.XX° ± 1° X.XXX° ± 0.5°	3rd Angle Projection
Date	24/04/17		



This drawing is confidential and copyright of Global Connector Technology, Ltd (GCT). This drawing must not be copied or disclosed without written consent. E & OE

**GCT**  
 Global Connector Technology  
 www.gct.co

Not to Scale	Drawn By LYH	Sheet No. 1/1
--------------	--------------	---------------