

NUMBER C-177904



METRIC

NOTES,

- PRODUCT SPEC.: 108-5410
  - APPLICABLE CONTACT P/N  
REC CONTACT: 177915-□(※20-※16AWG)  
177914-□(※26-※22AWG)
  - MATING CONN, P/N  
CAP HSG: 177912-□(パネル 取付タイプ)  
TAB CONTACT: 177917-□(※20-※16AWG)  
177916-□(※26-※22AWG)
  - APPLICABLE PLATE P/N: 177921
  - INSTRUCTION SHEET : 411-5638
  - SEE TABLE 1
  - PART 6-177904-1 COMPLY WITH GLOW WIRE REQUIREMENT FOR PARTS OF NON-METALLIC MATERIAL SUPPORTING A CURRENT-CARRYING CONNECTION DETAILED IN IEC 60335-1, SECTION 30 (GWT)
  - PART 177904-7 COMPLY WITH HOT WIRE REQUIREMENT, PA66, UL 94V-0, HOT WIRE IGNITION(HWI) VERSION ARE MOLDED IN A RESIN THAT COMPLIES WITH THE HOT WIRE IGNITION TEST 109-32026 AND ARE RECOMMENDED FOR USE WITH HWI HOUSING THAT ALSO COMPLY.
- △ Preliminary-not for production

本図ロックタイプIを示す  
AS SHOWN LOCK TYPE I

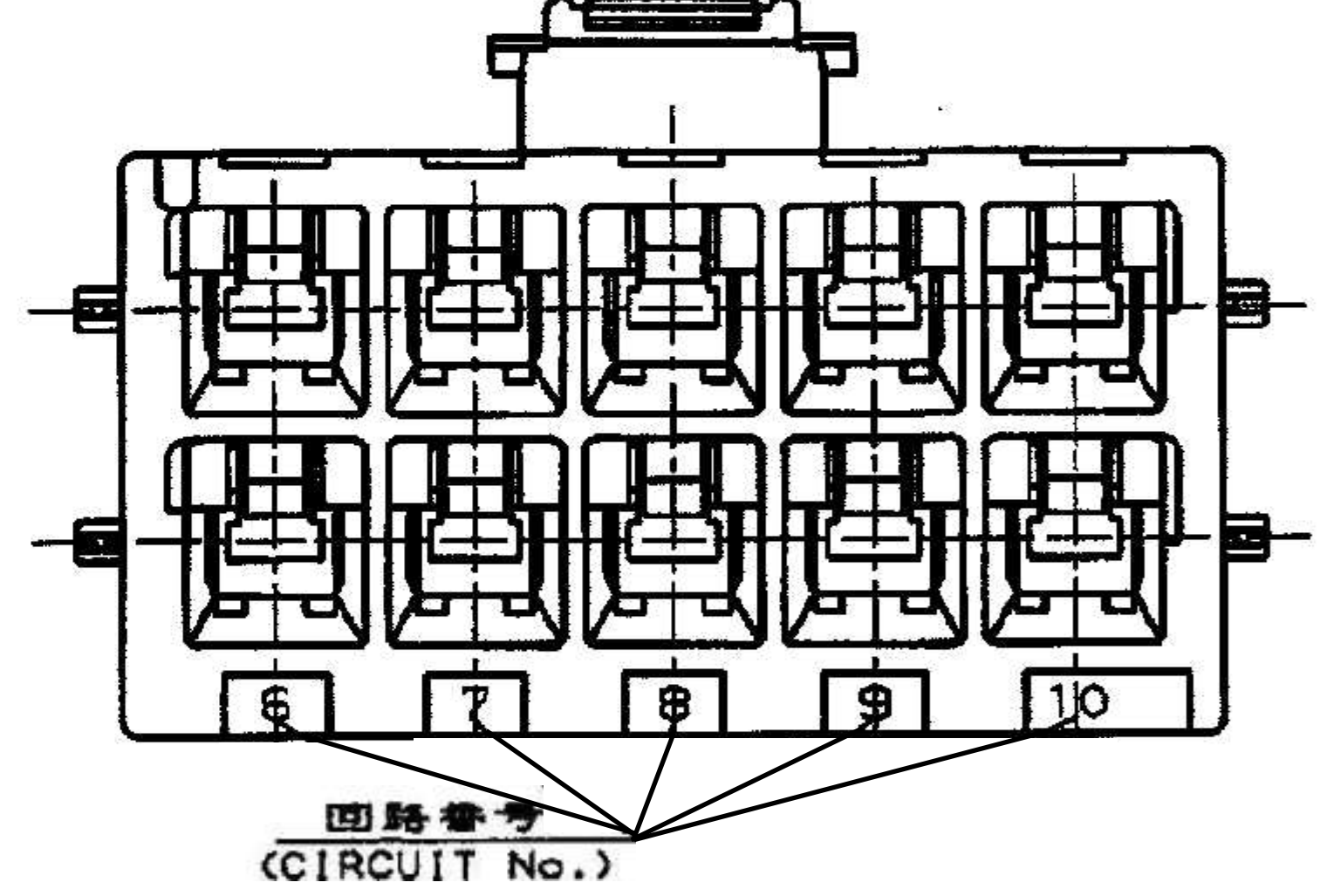
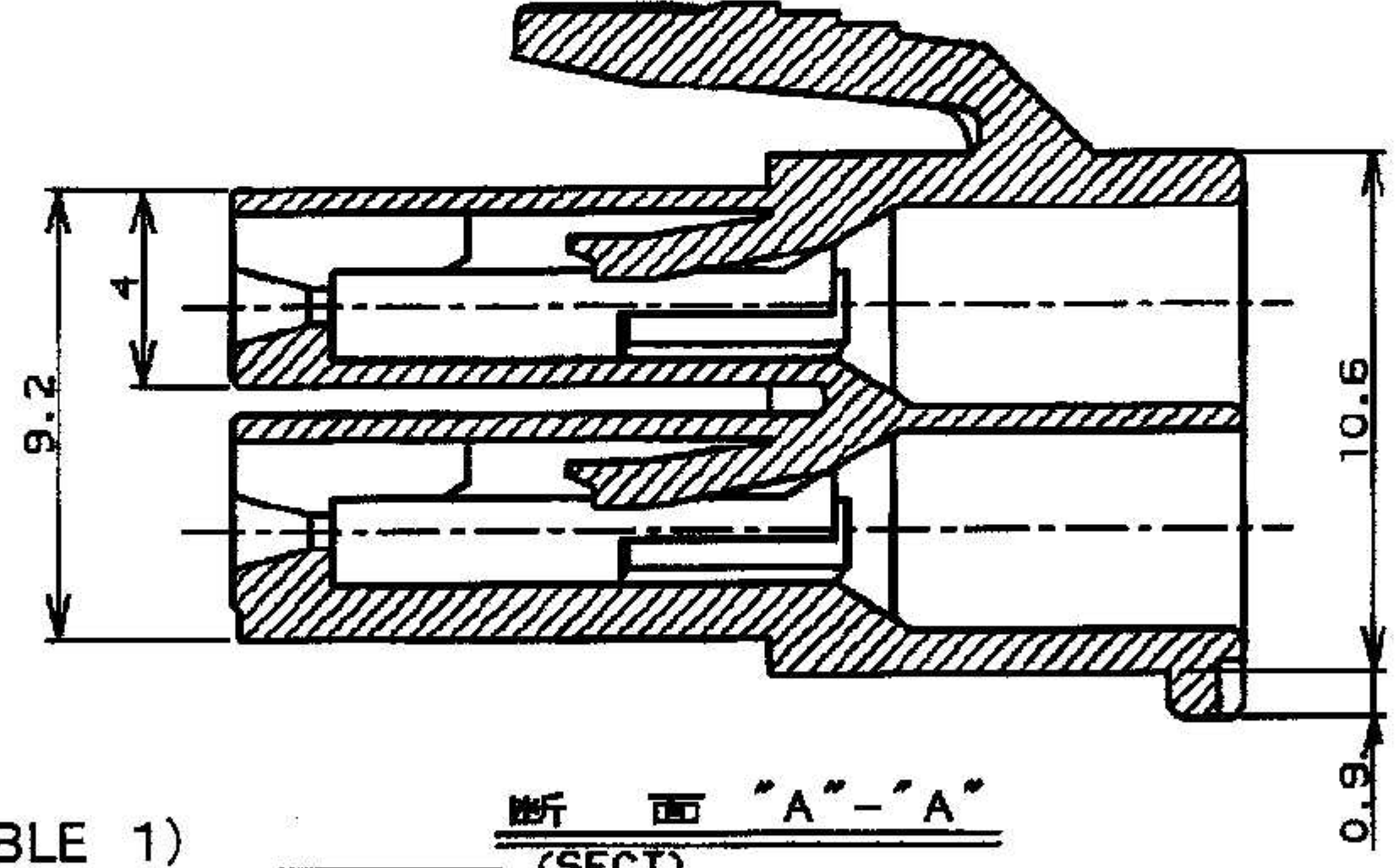
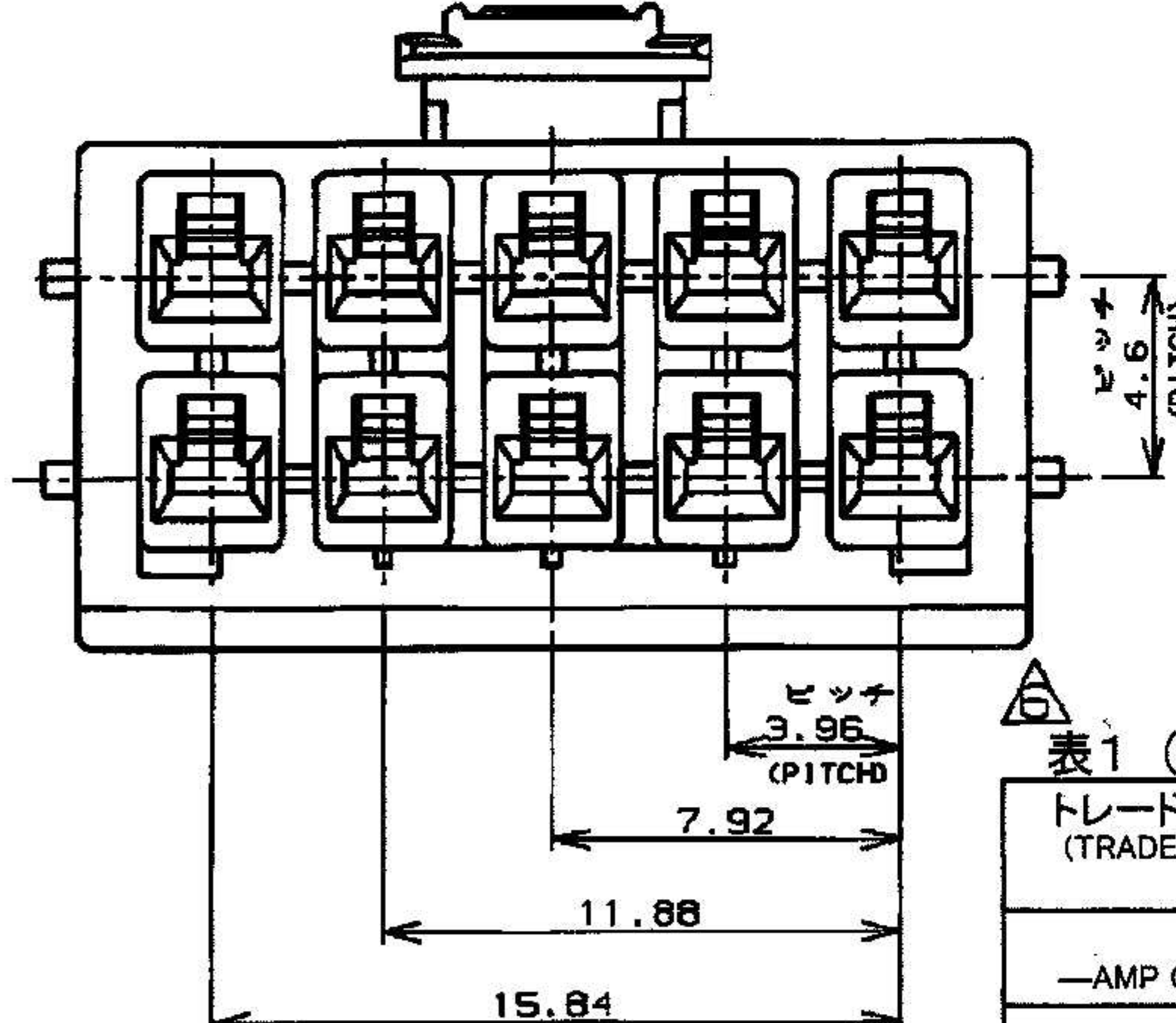
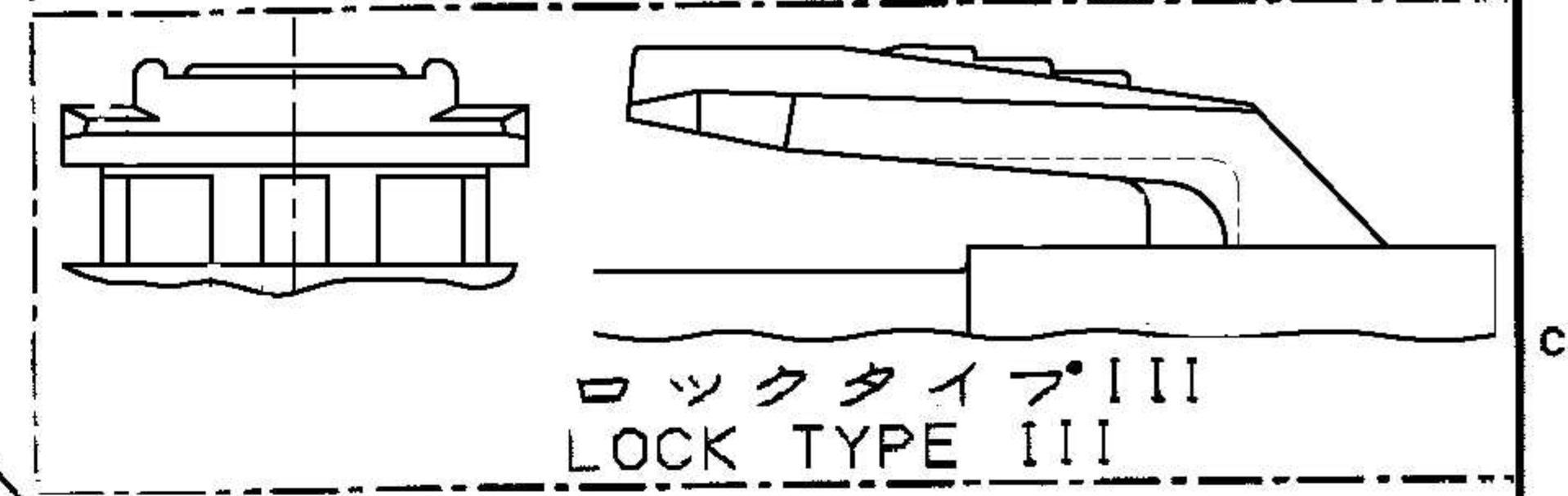
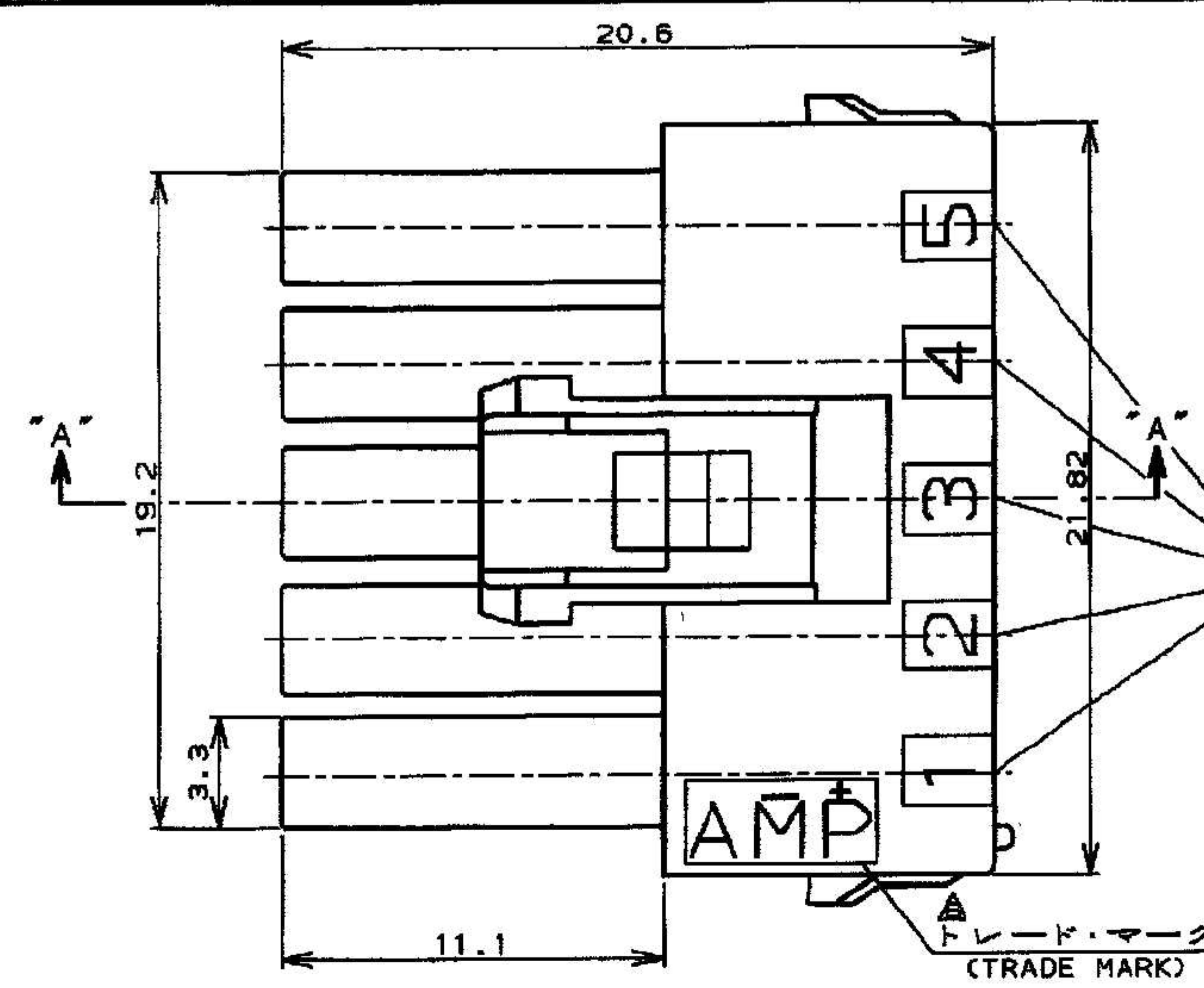


表1 (TABLE 1)

トレードマーク (TRADE MARK)	生産場所 (MANUFACTURING PLACE)
— AMP OR AMP	日本 (JAPAN)
—+ AMP OR AMP	中国 (CHINA(PRC))
* AMP OR AMP	韓国 (KOREA)

ロックタイプ (LOCK TYPE)	ハウジング色調 (HOUSING COLOR)	極数 (Pos.)	型番 (P/N)
ロックタイプI (LOCK TYPE I)	自然色 (NATURAL)	10	5-177904-1
ロックタイプI (LOCK TYPE I)	青 (BLUE)		
ロックタイプI (LOCK TYPE I)	黄 (YELLOW)		
ロックタイプI (LOCK TYPE I)	自然色 (NATURAL)	10	177904-1

- 注:
- 通用製品規格: 108-5410
  - 通用コンタクト型番  
リセ・コンタクト: 177915-□(※20-※16AWG)  
177914-□(※26-※22AWG)
  - 嵌合相手側製品型番  
キャップ・ハウジング: 177912-□(パネル取付タイプ)  
タブ・コンタクト: 177917-□(※20-※16AWG)  
177916-□(※26-※22AWG)
  - 通用プレート型番: 177921
  - 取扱説明書: 411-5638
- △ 表1参照

REV.	REV. NO.	REV. DATE	REV. BY	REV. CHECK	REV. DATE	REV. BY	REV. CHECK
C3	REVISED	14NOV 2014	W.W.	D.Z.	14NOV 2014	W.W.	D.Z.
C2	REVISED	14SEP 2014	W.W.	D.Z.	14SEP 2014	W.W.	D.Z.
C1	REVISED	14FEB 2014	A.Z.	D.Z.	14FEB 2014	A.Z.	D.Z.
C	REVISED	25AUG 09	A.Z.	H.W.	25AUG 09	A.Z.	H.W.
B	変更	11JUL 07	W.W.	M.S.	11JUL 07	W.W.	M.S.
A	変更	29MAY 98	T.Y.	M.S.	29MAY 98	T.Y.	M.S.
O	作成	22NOV 95	N.Y.	H.T.	22NOV 95	N.Y.	H.T.
LTR	変更 (REVISION RECORD)		DR	CHK		DR	CHK

適合電線径範囲 (WIRE RANGE)	絶縁外径 (INSULATION DIA.)	名称 (NAME)
— mm (AWG —)	— mmφ	AMP POWER DOUBLE LOCK CONN.
6/8 ナイロン (UL94V-0)	—	AMP POWER DOUBLE LOCK CONN. 3.96mm PITCH PLUG HOUSING 10 Pos (DBL ROW)
6/8 NYLON (UL94V-0)	—	一般公差
		10mm ±0.2
		10mm 以下 ±0.25
		30mm 以下 ±0.3
		角 度: ±3°

**AMP** Tyco Electronics AMP K.K. Kawasaki, Japan

AMP POWER DOUBLE LOCK CONN. 10極 3.96mmピッチ プラグハウジング (2列タイプ)

AMP POWER DOUBLE LOCK CONN. 3.96mm PITCH PLUG HOUSING 10 Pos (DBL ROW)

SIZE	LOC	番号 (No.)
B	J	C-177904

尺度 (SCALE) REV. C3 SHEET 1 OF 1

PRINT DIST DIMENSIONS IN MM. DO NOT SCALE PRINT