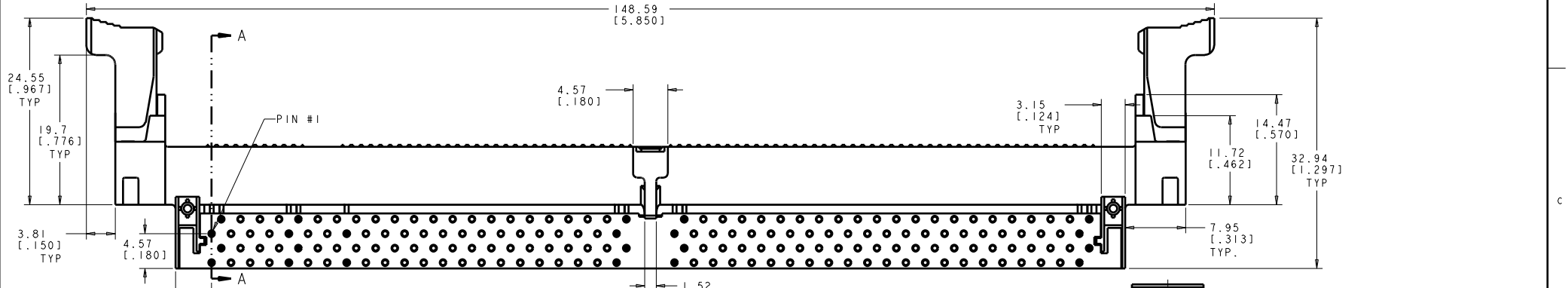
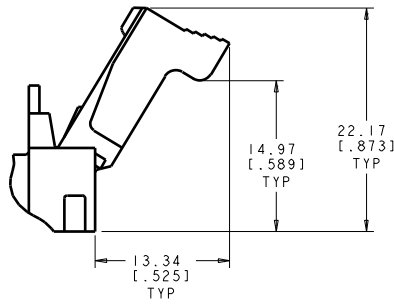


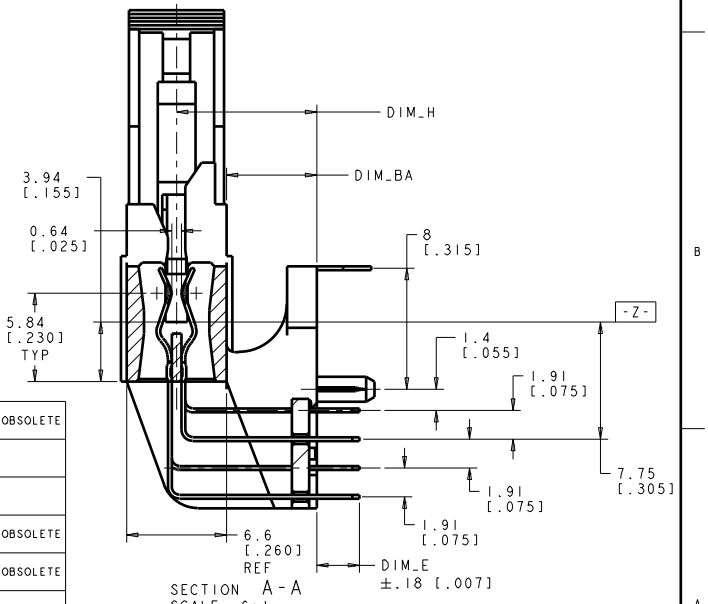
REV	DATE	DESCRIPTION	BY	CHK	APP
0					
02	20APR11	REVISED PER ECO-11-005033	RK	HML	



- ▲ MATERIAL:  
 HOUSING: HIGH TEMPERATURE NYLON  
 CONTACT: PHOSPHOR BRONZE
- ▲ FINISH:  
 CONTACT AREA:  
 0.000076 [.000030] MIN THICK GOLD OVER  
 0.001270 [.000050] MIN THICK NICKEL.  
 OR  
 0.000076 [.000003] MIN THICK GOLD FLASH OVER  
 0.000510 [.000020] MIN THICK PALLADIUM NICKEL OVER  
 0.001270 [.000050] MIN THICK NICKEL.  
 SOLDEXTAIL:  
 0.00381 [.000150] MIN THICK MATTE TIN OVER  
 0.00064 [.000025] MIN THICK NICKEL.
- ▲ FOR OPTIMUM PERFORMANCE, PADS SHOULD BE SMOOTH AND FLAT PADS TO BE PLATED WITH:  
 0.00102 [.000040] MIN THICK GOLD OVER  
 0.00127 [.000050] MIN THICK NICKEL.
- ▲ 5390171-6 IS SAME CONNECTOR AS 1-5390171-0 EXCEPT WITH LUBRICATED CONTACTS.



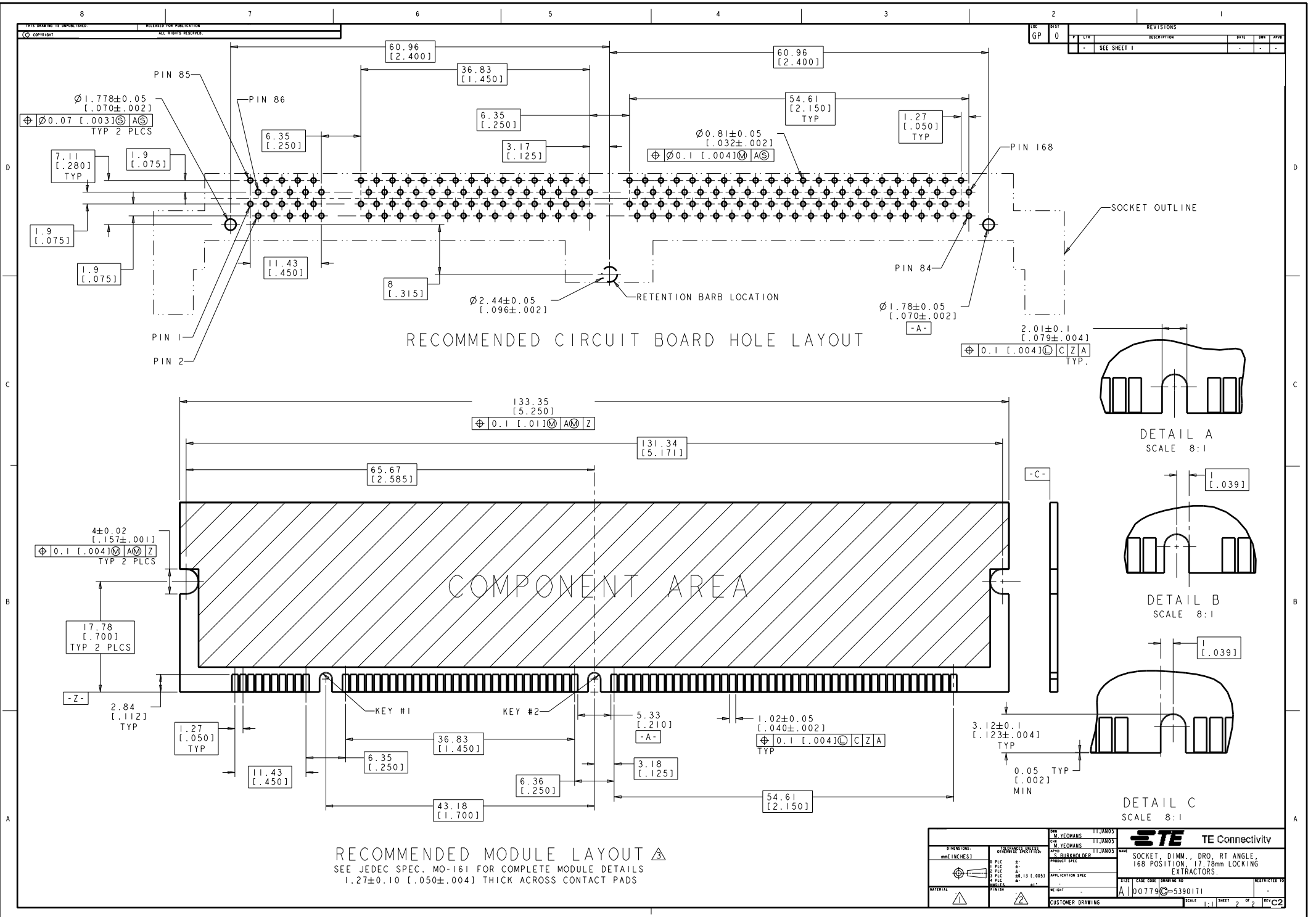
EXTRACTOR SHOWN IN THE OPEN POSITION



SECTION A-A  
SCALE 6:1

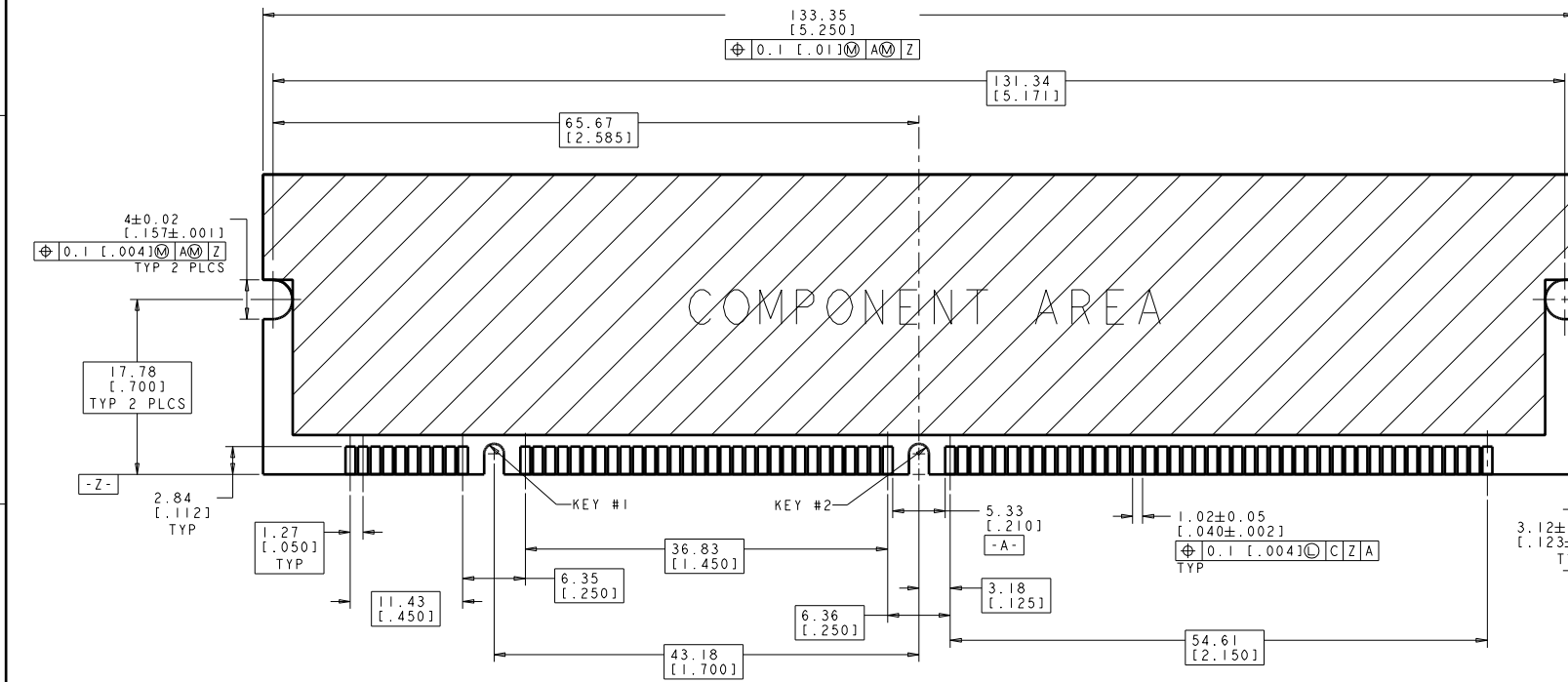
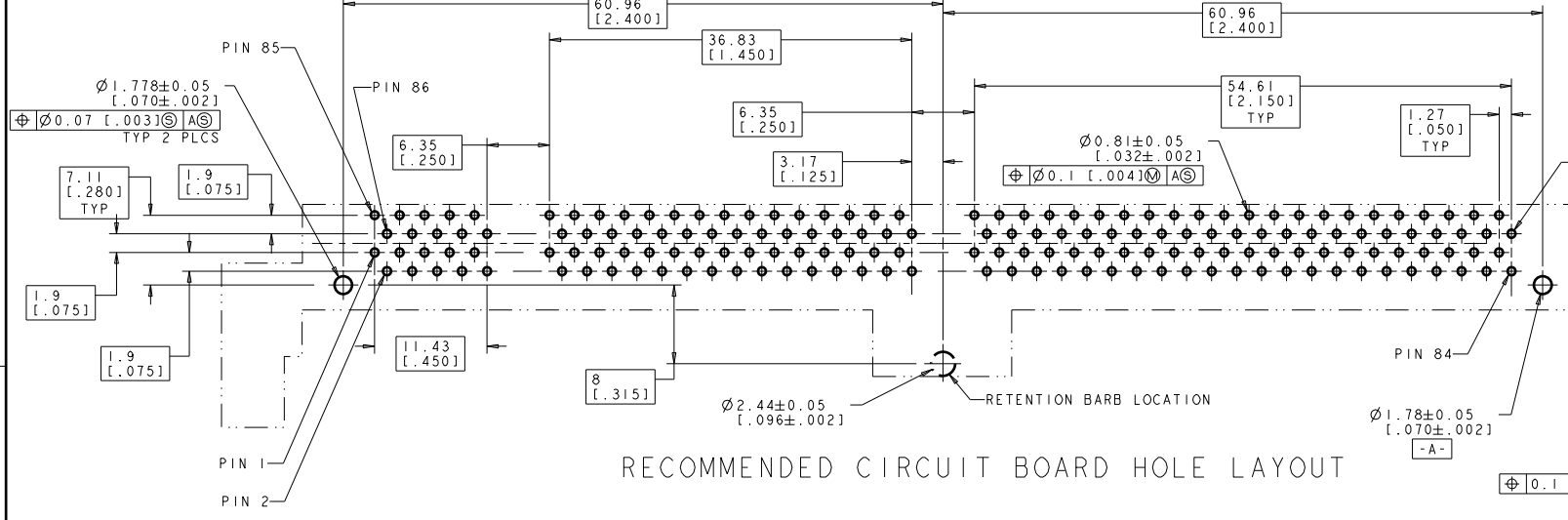
NB	3.3	10.92 [.430]	18.03 [.710]	14.22 [.560]	3.68 [.145]	7.62 [.300]	DETAIL C	DETAIL A	SYNC NON-BUFFERED DRAM, 3.3 VOLT	2-5390171-6	OBSOLETE
NB	3.3	10.92 [.430]	18.03 [.710]	14.22 [.560]	3.18 [.125]	7.62 [.300]	DETAIL C	DETAIL A	SYNC NON-BUFFERED DRAM, 3.3 VOLT	1-5390171-6	
SYNC	3.3	10.92 [.430]	18.03 [.710]	14.22 [.560]	3.18 [.125]	7.62 [.300]	DETAIL B	DETAIL A	SYNC DRAM, 3.3 VOLT	1-5390171-5	
STD	3.3	10.92 [.430]	18.03 [.710]	14.22 [.560]	3.18 [.125]	7.62 [.300]	DETAIL A	DETAIL A	STD DRAM, 3.3 VOLT	1-5390171-4	OBSOLETE
NB	3.3	9.27 [.365]	16.38 [.645]	12.57 [.495]	2.83 [.112]	5.97 [.235]	DETAIL C	DETAIL A	SYNC NON-BUFFERED DRAM, 3.3 VOLT	1-5390171-0	OBSOLETE
NB	3.3	9.27 [.365]	16.38 [.645]	12.57 [.495]	2.83 [.112]	5.97 [.235]	DETAIL C	DETAIL A	SYNC NON-BUFFERED DRAM, 3.3 VOLT	5390171-6	▲
SYNC	3.3	9.27 [.365]	16.38 [.645]	12.57 [.495]	2.83 [.112]	5.97 [.235]	DETAIL B	DETAIL A	SYNC DRAM, 3.3 VOLT	5390171-5	OBSOLETE
STD	3.3	9.27 [.365]	16.38 [.645]	12.57 [.495]	2.83 [.112]	5.97 [.235]	DETAIL A	DETAIL A	STD DRAM, 3.3 VOLT	5390171-4	OBSOLETE
TYPE	Y.Y	DIM_H	DIM_G	DIM_F	DIM_E ±.18 [0.07]	DIM_BA	KEY #1	KEY #2	PART DESCRIPTION	PART NUMBER	

DIMENSIONS: mm [INCHES]		DESIGNED BY: J.JANOS CHECKED BY: J.JANOS DATE: 11/11/05		<b>STE</b> TE Connectivity	
MATERIAL:		FINISH:		APPLICATION SPEC:	
WEIGHT:		PART:		CUSTOMER DRAWING:	
SOCKET, DIMM., DRO, RT ANGLE, 168 POSITION, 17.78mm LOCKING EXTRACTORS.		PART NUMBER: A100779-5390171		SHEET 1 OF 2 REV C2	



REV	DATE	BY	CHKD	APP'D	DESCRIPTION
0					SEE SHEET 1

THIS DRAWING IS UNCLASSIFIED  
 RELEASED FOR PUBLICATION  
 ALL RIGHTS RESERVED



SEE JEDEC SPEC. MO-161 FOR COMPLETE MODULE DETAILS  
 1.27±0.10 [.050±.004] THICK ACROSS CONTACT PADS

DIMENSIONS mm [INCHES]		REVISED BY DATE		DATE BY	
MATERIAL		FINISH		WEIGHT	
APPLICATION SPEC		APPLICATION SPEC		APPLICATION SPEC	
CUSTOMER DRAWING		CUSTOMER DRAWING		CUSTOMER DRAWING	

**STE** TE Connectivity  
 SOCKET, DIMM., DRO, RT ANGLE,  
 168 POSITION, 17.78mm LOCKING  
 EXTRACTORS.  
 SIZE: 00779 © 5390171  
 SCALE: 1:1 SHEET 2 OF 2 REV: C2