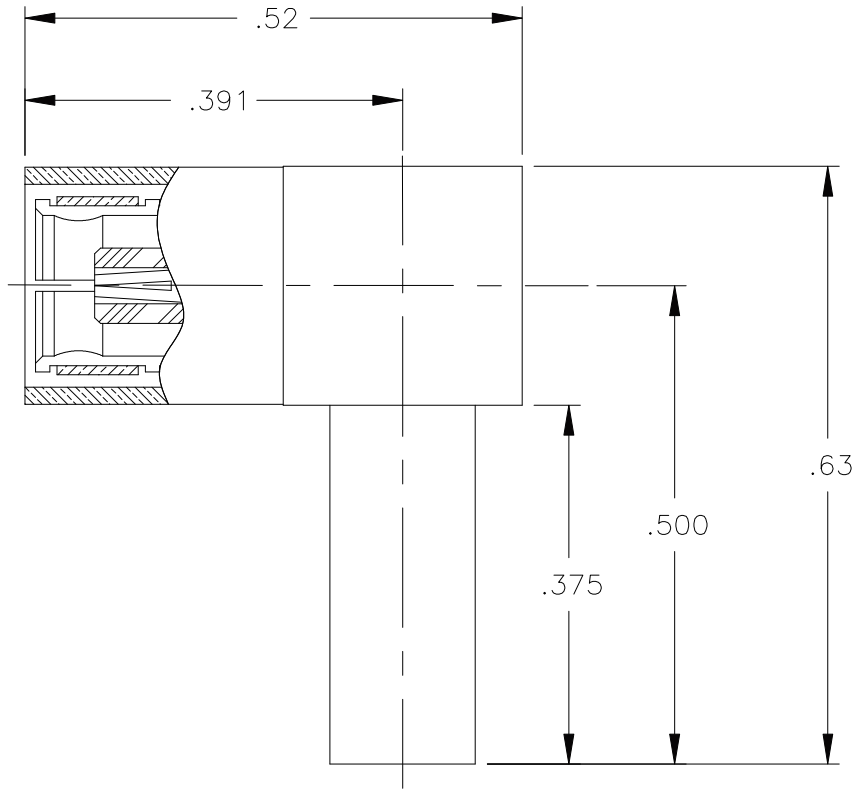


2105-7521-002

REVISIONS			
REV	DESCRIPTION	DATE	APPROVED
-	INITIAL RELEASE	01/16/98	D.N.




NOTES: CONFORMS TO MIL-PRF-39012 SMB SERIES

MATERIAL:

- INSULATORS = TEFLON, VIRGIN WHITE PER ASTM D1710, GRADE 1, TYPE I, CLASS A.
- CONTACT & SPRING = BERYLLIUM COPPER PER ASTM B196, ALLOY C17300, TEMPER TD04.
- CRIMP SLEEVE = SEAMLESS COPPER TUBE PER ASTM B75, TYPE C12000, TEMPER: LIGHT ANNEAL O50.
- ALL OTHER METAL PARTS = BRASS PER ASTM B16, ALLOY C36000, TEMPER H02.

FINISHES:

- CONTACT = GOLD PLATE PER MIL-G-45204, TYPE II, CLASS 1, GRADE C, OVER .00010 TO .00020 STRESS FREE SULFAMATE NICKEL PER QQ-N-290.
- ALL OTHER METAL PARTS = NICKEL PLATE PER QQ-N-290, CLASS 1, GRADE G, EXCEPT .0001 - .0002 THK. OVER .00005 - .0001 THK. COPPER PER MIL-C-14550.

UNLESS OTHERWISE SPECIFIED DIMENSIONS ARE IN INCHES TOLERANCES ON			DWN: DATE D.N. 01/15/98		 APPLIED ENGINEERING PRODUCTS 104 John W. Murphy Dr. New Haven, CT 06513	
DECIMAL	FRAC	ANGLE	CHKD: DATE C.T. 01/16/98			
	1/64	±2°	APVD: DATE M.S. 01/16/98		SMB FEMALE RIGHT ANGLE CABLE PLUG, FOR USE WITH RG-178 & 196 CABLE	
MATERIAL: SEE NOTES			FINISH: SEE NOTES			SIZE A
			SCALE 5:1			FSCM NO. 19505 DWG NO. 2105-7521-002 REV -
			CADFILE 2105-7521-002		SHEET 1 OF 1	

2105-7521-002