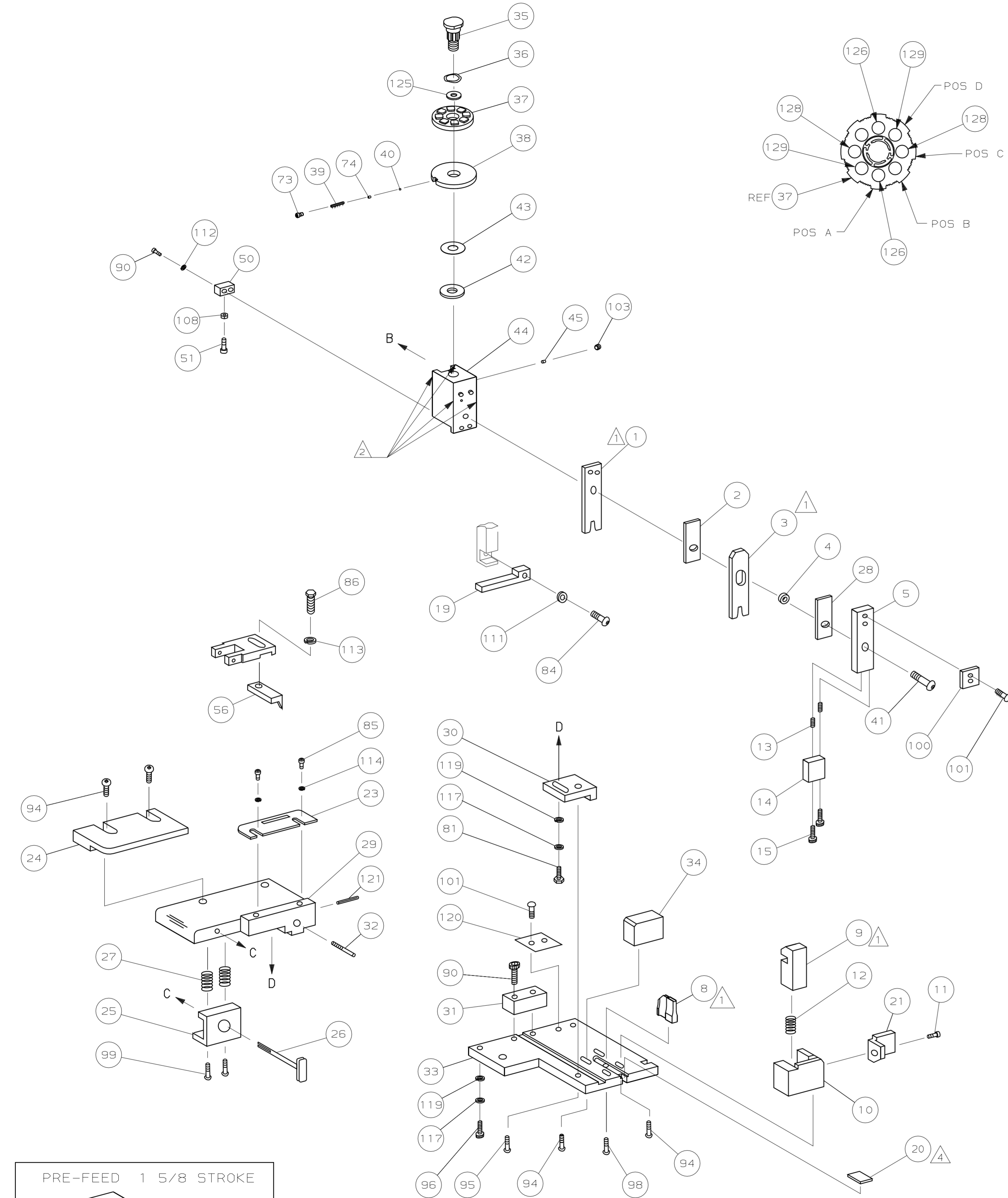


| PART NUMBER | REV | FIRST USED |
|-------------|-----|------------|
| 567954-1 | A | 854040-3 |

| TERMINAL NAME: RECEPTACLE Ø.055 PIN | | | |
|-------------------------------------|---------------------------|--------------|-----------------|
| VISIBLE LTR | CRIMP DATA (AMP TERMINAL) | CRIMP HEIGHT | WIRE SIZE |
| A | .046 ±.002 [1.17 ±0.05mm] | | 20 |
| B | .043 ±.002 [1.09 ±0.05mm] | | (1) 22or (2) 24 |
| C | .040 ±.002 [1.02 ±0.05mm] | | 24 |
| D | NOT USED | | |
| CRIMP | SIZE | TYPE | RANGE |
| WIRE | .062 [1.57mm] | F | 24-20, 2#24 |
| INSUL | .080 [2.03mm] | F | .048-.071 |

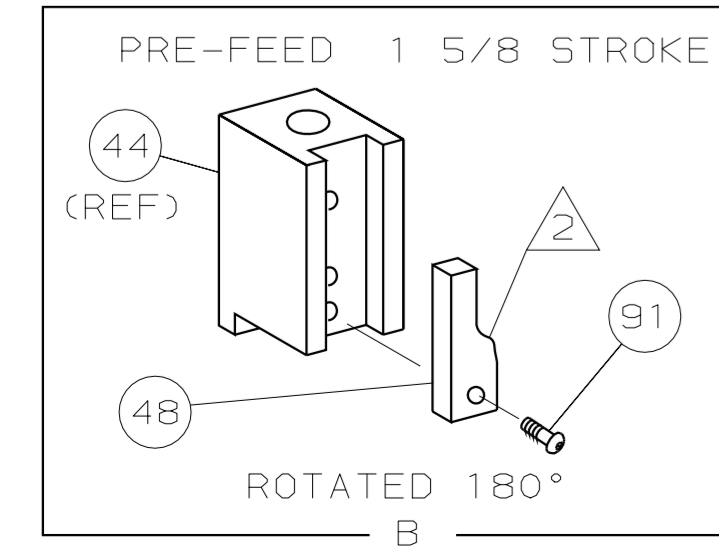
SIM TO HDM 466388-1

THIS DRAWING IS A CONTROLLED DOCUMENT.



| QTY | REV | TER | APPL | SPEC | FEED | APPL INSTRUCTION | SET UP GAGE | LAYOUT |
|-----|-----|-----|------------|------------------------------------|------|---------------------|-------------|--------|
| 2 | - | C | 4-354779-7 | PIN, WIRE DISC (.3225)D | .290 | SEE CUSTOMER MANUAL | NONE | L2186 |
| 2 | - | C | 4-354779-1 | PIN, WIRE DISC (.3195)C | | | | |
| 2 | - | C | 5-354779-4 | PIN, WIRE DISC (.3260)A | | | | |
| 1 | - | A | 986950-1 | WASHER, FLAT PRECISION | | | | |
| 1 | - | A | 217238-3 | GENERAL INSTRUCTION PACKAGE | | | | |
| 1 | - | A | 4-21028-0 | PIN, SLT SPR (Ø.093x.75) ST GDE PL | | | | |
| 1 | - | B | 690701-2 | PLATE, SERIAL NO. | | | | |
| 2 | - | A | 21899-2 | WASHER, FLAT (#10) S G ADJ BLK | | | | |
| 2 | - | A | 21024-5 | WASHER, LOCK (#10) ADJ BLOCK | | | | |
| 2 | - | A | 21024-2 | WASHER, LOCK (#4) FRONT STP GUIDE | | | | |
| REF | - | A | 21024-4 | WASHER, LOCK (#8) FEED FINGER | | | | |
| 2 | - | A | 21024-4 | WASHER, LOCK (#8) DEP-HOLD | | | | |
| REF | - | A | 21024-4 | WASHER, LOCK (#8) STRIPPER | | | | |
| 1 | - | A | 21018-5 | NUT, HEX (#6) HOLD DOWN | | | | |
| 1 | - | A | 21009-2 | SCR, SKT SET (1/4-20x.25 LW) RAM | | | | |
| 4 | - | A | 21017-2 | SCR, DRIVE (#2x.19) ID PLATE | | | | |
| 1 | - | B | 819347-1 | PLATE, IDENTIFICATION | | | | |
| 2 | - | A | 3-21002-0 | SCR, BHC (10-32x.88) DRAG | | | | |
| 1 | - | A | 22733-8 | SCR, BHC (8-32x.38 LW) ANVIL | | | | |
| 1 | - | A | 3-21000-8 | SCR, SHC (10-32x.88) MOUNTING | | | | |
| 1 | - | A | 2-21002-7 | SCR, BHC (10-32x.50) SG ADJ BLK | | | | |
| 4 | - | A | 2-21002-2 | SCR, BHC (8-32x.50) SHEAR-TERM SUP | | | | |
| 1 | - | A | 1-21002-7 | SCR, SHC (6-32x.50) CAM | | | | |
| 4 | - | A | 2-21000-7 | SCR, SHC (8-32x.50) SCR BLK | | | | |
| REF | - | A | 2-22603-0 | SCR, HEX HD (8-32x.31) FEED FINGER | | | | |
| 2 | - | A | 1-21000-3 | SCR, SHC (4-40x.25) F ST GUIDE | | | | |
| REF | - | A | 22733-9 | SCR, BHC (8-32x.50 SL) STRIPPER | | | | |
| 1 | - | A | 3-22603-1 | SCR, HEX (10-32x.38) SG ADJ BL | | | | |
| 2 | - | B | 463310-6 | BLADE, STRIPPING (#22) | | | | |
| 1 | - | A | 690603-1 | SPRING, ASSIST | | | | |
| 1 | - | A | 23030-1 | SCR, SKT CAP (6-32x.25) CP DSC | | | | |

| QTY | REV | TER | APPL | SPEC | DESCRIPTION | ITEM NO |
|-----|-----|-----|------------|-----------------------------|-------------|---------|
| 70 | | | | | | |
| 69 | | | | | | |
| 68 | | | | | | |
| 67 | | | | | | |
| 66 | | | | | | |
| 65 | | | | | | |
| 64 | | | | | | |
| 63 | | | | | | |
| 62 | | | | | | |
| 61 | | | | | | |
| 60 | | | | | | |
| 59 | | | | | | |
| 58 | | | | | | |
| 57 | | | | | | |
| 56 | - | B | 694433-8 | PAWL, FEED | | |
| 55 | | | | | | |
| 54 | | | | | | |
| 53 | | | | | | |
| 52 | | | | | | |
| 51 | - | A | 811242-2 | BUMPER, HOLDDOWN | | |
| 50 | - | A | 690753-1 | SPACER, TONKER | | |
| 49 | | | | | | |
| 48 | - | A | 690602-6 | CAM, PRE-FEED 1.62 STROKE | | |
| 47 | | | | | | |
| 46 | | | | | | |
| 45 | - | A | 690191-1 | PLUG, NYLON | | |
| 44 | - | C | 455673-1 | RAM | | |
| 43 | - | A | 690125-1 | WASHER, LAMINATED | | |
| 42 | - | A | 690124-1 | WASHER, RAM | | |
| 41 | - | A | 7-21002-9 | BOLT, CRIMPER (5/16x1.00) | | |
| 40 | - | A | 23241-6 | BALL, STEEL | | |
| 39 | - | A | 690170-1 | SPRING, COMPRESSION | | |
| 38 | - | C | 690142-1 | DISC, INSULATION | | |
| 37 | - | D | 354777-1 | WIRE DISC, PLASTIC | | |
| 36 | - | A | 22480-5 | WASHER, SPRING | | |
| 35 | - | B | 690212-1 | POST, RAM | | |
| 34 | - | B | 690786-3 | SUPPORT, TERMINAL | | |
| 33 | - | C | 462544-1 | PLATE, BASE SPECIAL | | |
| 32 | - | A | 690432-3 | SCREW, ADJUSTMENT | | |
| 31 | - | B | 462543-1 | BLOCK, SCREW SPECIAL | | |
| 30 | - | B | 455689-1 | BLOCK, STRIP GUIDE ADJ | | |
| 29 | - | C | 455671-1 | PLATE, STRIP GUIDE | | |
| 28 | - | C | 1-455888-0 | SPACER, FRONT SHEAR DEP | | |
| 27 | - | A | 1-22284-0 | SPRING, DRAG | | |
| 26 | - | B | 690546-1 | LEVER, DRAG RELEASE | | |
| 25 | - | B | 240792-1 | DRAG, TERMINAL | | |
| 24 | - | D | 690440-9 | GUIDE, STRIP (REAR) | | |
| 23 | - | A | 690438-1 | GUIDE, STRIP (FRONT) | | |
| 22 | | | | | | |
| 21 | - | A | 463756-1 | GUIDE, SCRAP | | |
| 20 | - | A | 904275-1 | SUPPORT, SPRING | | |
| 19 | REF | - | C | 462615-1 | STRIPPER | |
| 18 | - | B | 904225-1 | JAW ASSY | | |
| 17 | | | | | | |
| 16 | | | | | | |
| 15 | - | A | 1-21989-4 | SCR, SHLD | | |
| 14 | - | B | 904274-1 | DEPRESSOR | | |
| 13 | - | A | 6-22281-3 | SPRING, DEPRESSOR | | |
| 12 | - | A | 6-22279-4 | SPRING, SHEAR | | |
| 11 | - | B | 1-690461-6 | STOP, SHEAR (FRONT) | | |
| 10 | - | B | 462548-3 | HOLDER, SHEAR (FRONT) SP | | |
| 9 | - | B | 462547-3 | SHEAR, FLOAT (FRONT) SP | | |
| 8 | - | C | 690471-7 | ANVIL | | |
| 7 | | | | | | |
| 6 | | | | | | |
| 5 | - | A | 904273-1 | DEPRESSOR, SHEAR (FRONT) SP | | |
| 4 | - | B | 2-238011-2 | SPACER, BLOCK CRIMPER | | |
| 3 | - | C | 5-456134-4 | CRIMPER, INSULATION | | |
| 2 | - | C | 455888-4 | SPACER, CRIMPER | | |
| 1 | - | C | 1-456403-6 | CRIMPER, WIRE | | |



- 1 RECOMMENDED SPARE PARTS.
- 2 GREASE LIGHTLY.
- 3 ITEM NOT SHOWN
- 4 ATTACH ITEM 20 TO ITEM 33 USING ADHESIVE PART NUMBER 28998-6.

5. ON THE STRIPPER CRIMPER MACHINE, POSITION THE FRONT METAL GUARD ON THE FRONT SIDE OF THE LEXAN DOOR

| | |
|------|----|
| LOC | A |
| DIST | 66 |

| QTY | REV | TER | APPL | SPEC | DESCRIPTION | ITEM NO |
|-----|-----|-----|------|---------|-------------|---------|
| -1 | U/M | DWG | SIZE | PART NO | DESCRIPTION | ITEM NO |

| QTY | REV | TER | APPL | SPEC | DESCRIPTION | ITEM NO |
|-----|-----|-----|------|---------|-------------|---------|
| -1 | U/M | DWG | SIZE | PART NO | DESCRIPTION | ITEM NO |

DIMENSIONS IN INCHES. DO NOT SCALE PRINT. TOLERANCES UNLESS OTHERWISE SPECIFIED.

| | | | | | |
|-----|-----------|-----|---------|-----|--------------------------------------------|
| DR | W.HOOVER | APP | T.ELBIN | AMP | AMP Incorporated Harrisburg, PA 17105-3608 |
| CHK | C.ERISMAN | REL | | | |

NAME: STRIPPER CRIMPER APPLICATOR MACHINE REF: STRIPPER CRIMPER

SCALE: - DWG NO: 567954 SHEET: 1 OF 1 REV: A2

CAGE CODE: 00779 CUSTOMER AND ASSEMBLY DRAWING

567954