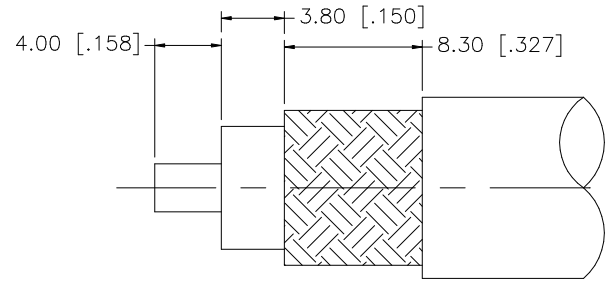
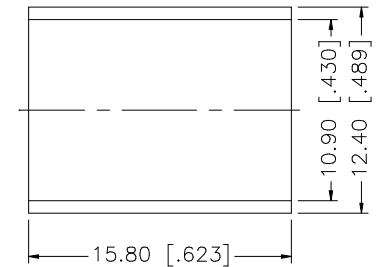
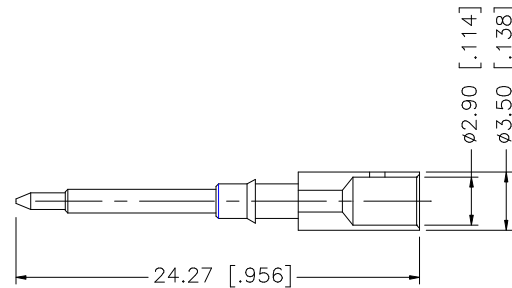
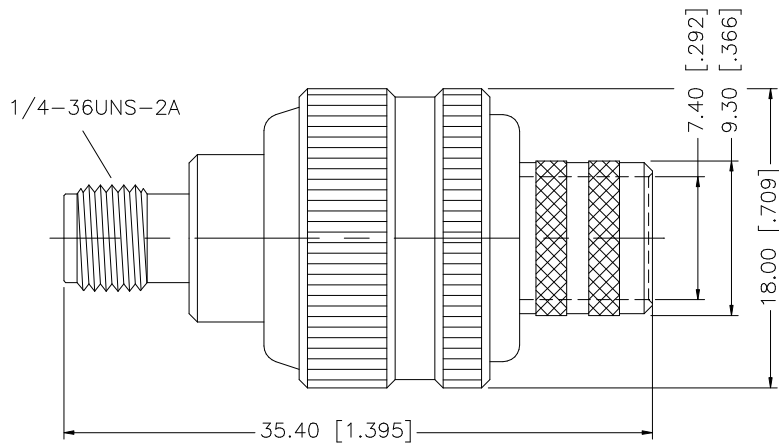


| REV. | DATE     | DESCRIPTION     |
|------|----------|-----------------|
| NC   | 01/11/07 | INITIAL RELEASE |



RECOMMENDED  
CABLE STRIPPING DIM'S



CRIMP NOTES:

1. CRIMPED FERRULE HEX CRIMP SIZE .429"
2. CRIMPED CONTACT PIN HEX CRIMP SIZE .118"

|   |             |          |         |         |   |                     |              |   |        |          |
|---|-------------|----------|---------|---------|---|---------------------|--------------|---|--------|----------|
| 8 |             |          |         |         | <small>UNLESS OTHERWISE SPECIFIED DIMENSIONS ARE IN MILLIMETERS. DIMENSIONS IN [ ] ARE IN INCHES AND FOR CUSTOMER REFERENCE ONLY.</small><br><br><small>UNLESS OTHERWISE SPECIFIED TOLERANCES FOR MILLIMETERS ARE:<br/> 0.5 - 8mm ± 0.20mm<br/> 8 - 30mm ± 0.40mm<br/> 30 - 120mm ± 0.50mm</small><br><br><small>UNLESS OTHERWISE SPECIFIED TOLERANCES FOR INCHES ARE:<br/> .020 - .315 ± ± 0.007"<br/> .315 - 1.180 ± ± 0.015"<br/> 1.180 - 4.724 ± ± 0.020"</small> | APPROVALS           | DATE         | <h1 style="color: blue;">Amphenol Connex</h1> <p><b>SMA REVERSE POLARITY CRIMP JACK<br/>(FOR BELDEN 9913, 9914, LMR400)</b></p> |        |          |
| 7 |             |          |         | DRAWN   |   | G.R.S.              | 01/11/07     |   |        |          |
| 6 |             |          |         | CHECKED |   |                     |              |   |        |          |
| 5 |             |          |         | ISSUED  |   |                     |              |   |        |          |
| 4 | FERRULE     | COPPER   | GOLD    | 1       |   | SHEET               | 1 OF 1       |   |        |          |
| 3 | CONTACT PIN | BRASS    | GOLD    | 1       | PART DESCRIPTION  |                     |              |   |        |          |
| 2 | INSULATOR   | TEFLON   | NATURAL | 1       | PART NO.  |                     |              |   |        |          |
| 1 | BODY        | BRASS    | GOLD    | 1       | 132332RP  |                     |              |   |        |          |
|   | DESCRIPTION | MATERIAL | FINISH  | QTY     | CAD FILE  | DWG. NO.            | 132332RP.DWG | REV. A  | SIZE A | SCALE NA |
|   |             |          |         |         | DO NOT SCALE DRAWING  | C:/132/132332RP.DWG |              |   |        |          |