

## ► General data



Power supply unit, common-mode, input 120 V AC, output 2 x 15 V DC/1 A

Order number  
Type

2943819  
CM 90-PS-120AC/ 2X15DC/1

Barcode number  
Unit pack  
Customs tariff

4017918081362  
1 Pcs.  
85044094000

## ► Technical data

### Input data

Nominal input voltage	120 V AC +6 % -10 %
Frequency range	50 Hz ... 60 Hz
Nominal power consumption	Approx. 75 VA
Input fuse	Thermal release fuse

---

**Output data**

Nominal output voltage	± 15 V DC ±4%
Output current	1 A (2 x)
Residual ripple	< 30 mVss
Output fuse	IEC 127-2/EN 60 127-2 (2 x)
Protective circuit/component	Damping diode, varistor

---

**General data**

Width	90 mm
Height	146 mm
Depth	75 mm
Weight	1.5 kg
Operating voltage display	LED
Operating mode	100% operating factor
Test voltage input/output	4 kV AC
Degree of protection	IP 20
Ambient temperature (operation)	0 °C ... 60 °C
Installation position	On horizontal DIN rail, venting slits above and below
Assembly instructions	Can be aligned with spacing = 10 mm
Standards/regulations	IEC 664/IEC 664A/DIN VDE 0110-1:1989-01
Standards/regulations	DIN VDE 0551, UL 1012

---

**Connection data, input**

Screw thread	M 2,5
Stripping length	8 mm
Type of connection	Screw connection
Min. conductor cross section AWG/kcmil	24
Conductor cross section AWG/kcmil max	14
Min. conductor cross section, rigid	0.2 mm <sup>2</sup>
Conductor cross section, rigid max.	2.5 mm <sup>2</sup>
Conductor cross section flexible min.	0.2 mm <sup>2</sup>
Max. conductor cross section, flexible	2.5 mm <sup>2</sup>

---

**Connection data, output**

Stripping length	8 mm
Type of connection	Screw connection
Min. conductor cross section AWG/kcmil	24
Conductor cross section AWG/kcmil max	14
Min. conductor cross section, rigid	0.2 mm <sup>2</sup>
Conductor cross section, rigid max.	2.5 mm <sup>2</sup>
Conductor cross section flexible min.	0.2 mm <sup>2</sup>
Max. conductor cross section, flexible	2.5 mm <sup>2</sup>

---

## ► Certificates

---

### CSA

Comments	Output
AWG/kcmil	24-12

---

### UL

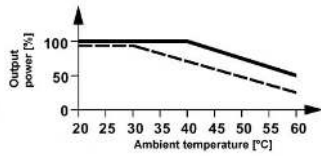
Nominal voltage $U_N$	15 V
Nominal current $I_N$	1 A
AWG/kcmil	24-12

---

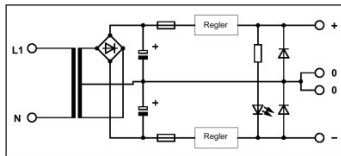
## ▶ Drawings

---

### Diagram



### Circuit diagram



### Approval logo



## ► Address

---

Phoenix Contact GmbH & Co. KG  
Flachsmarktstr. 8  
32825 Blomberg  
Germany  
Tel + 49 - (0) 52 35 - 3-00  
Fax + 49 - (0) 52 35 - 3-4 12 00  
[www.phoenixcontact.com](http://www.phoenixcontact.com)

© Phoenix Contact  
Technical modifications reserved