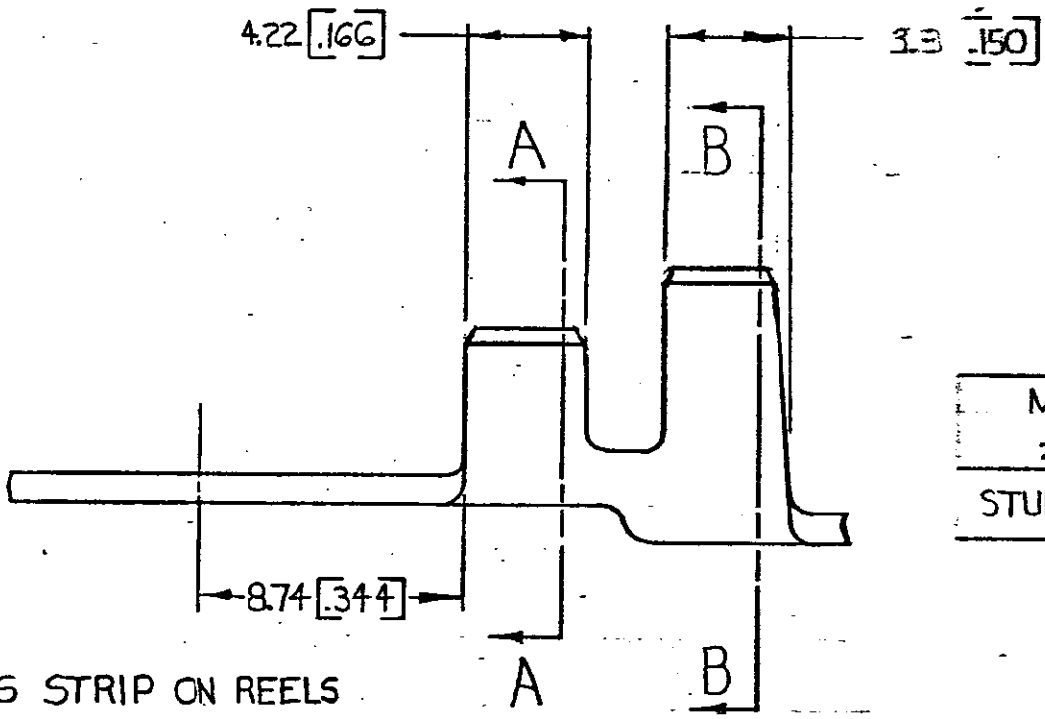
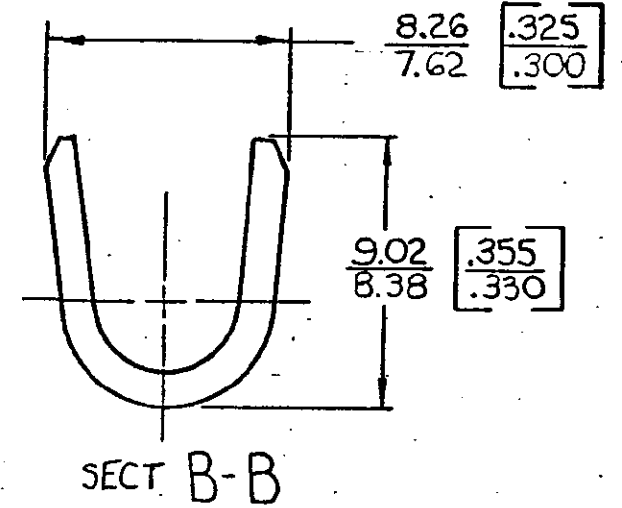
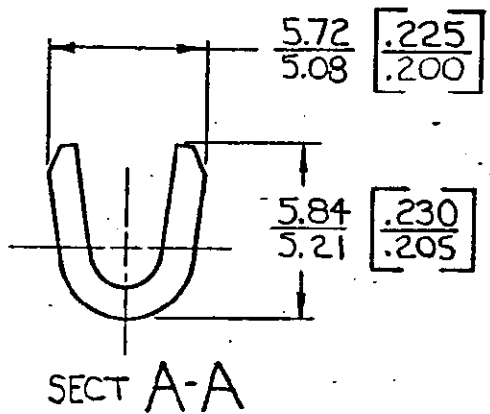
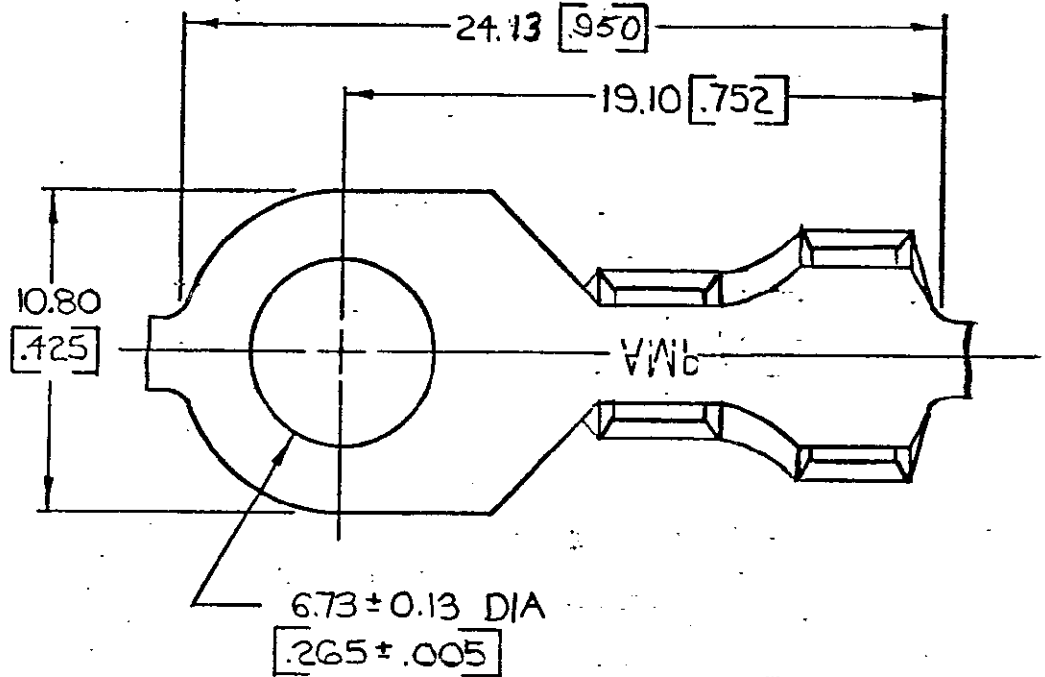


© COPYRIGHT 1968 BY AMP INCORPORATED, HARRISBURG, PA.
 ALL INTERNATIONAL RIGHTS RESERVED. AMP INCORPORATED PRODUCTS
 COVERED BY U. S. AND FOREIGN PATENTS AND/OR PATENTS PENDING.

		REVISIONS			LOC	DIST
P	F	ZONE	LTR	DESCRIPTION	DATE	APPROVED
✓	✓		A	REDRAWN & REVISED A-3943	4-26-78	DG
✓	✓		B	REVISED PER A-5939	4/15/83	SS/yl
✓	✓		C	REV PER AF-8047	8/18/84	PAE BT
✓	✓		D	REV PER 0710-037-96	12/6/84	PAE/64



MG 1/4	2.0 - 3.0 mm ² [4 - 12]	4.32 - 5.33 [.170 - .210]	NONE	102 BRASS [040]	41604
STUD SIZE	WIRE RANGE	INSULATION RANGE	FINISH	MATERIAL	PART NO

UNLESS OTHERWISE SPECIFIED DIMENSIONS ARE IN INCHES. MM TOLERANCES ON DECIMALS ±0.38 [0.15] ANGLES ±1°0'	CONTRACT NO	AMP INCORPORATED Harrisburg, Pa.
	DR Donald Q Wood 4/26/79	
MATERIAL	CHK James Davis 7-20-78	NAME
SEE TABLE	APPD R.P. Franz 8-10-78	RING
FINISH	APPD G. Zwick 8-10-78	SIZE
SEE TABLE	DSGN APPD	B
	OTHER APPD	CODE IDENT NO
		00779
		DRAWING NO
		41604
		SCALE
		SHEET

METRIC

1. CONTINUOUS STRIP ON REELS
 2. DIMENSIONS IN BRACKETS ARE IN INCHES