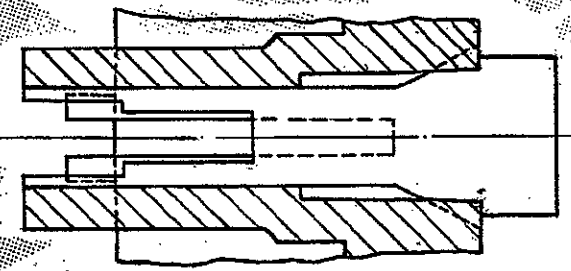
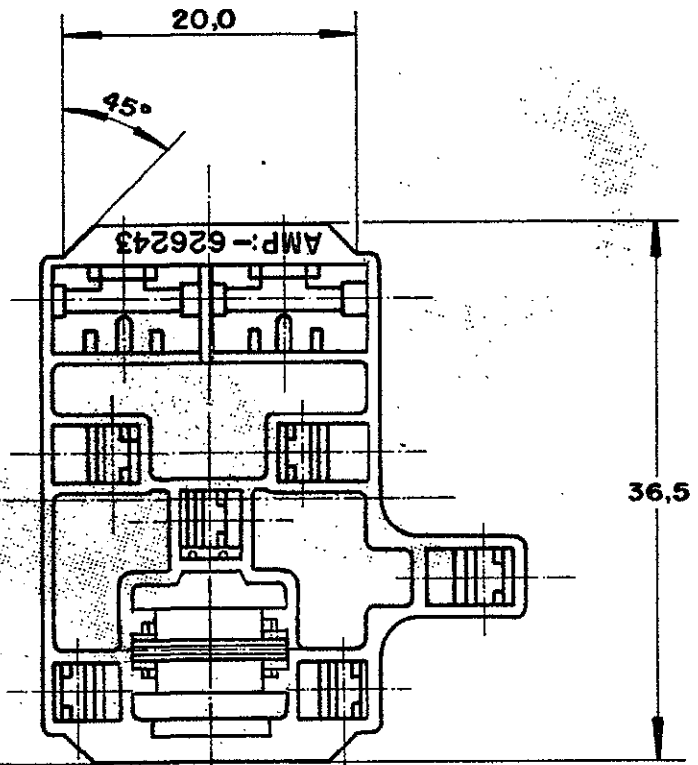
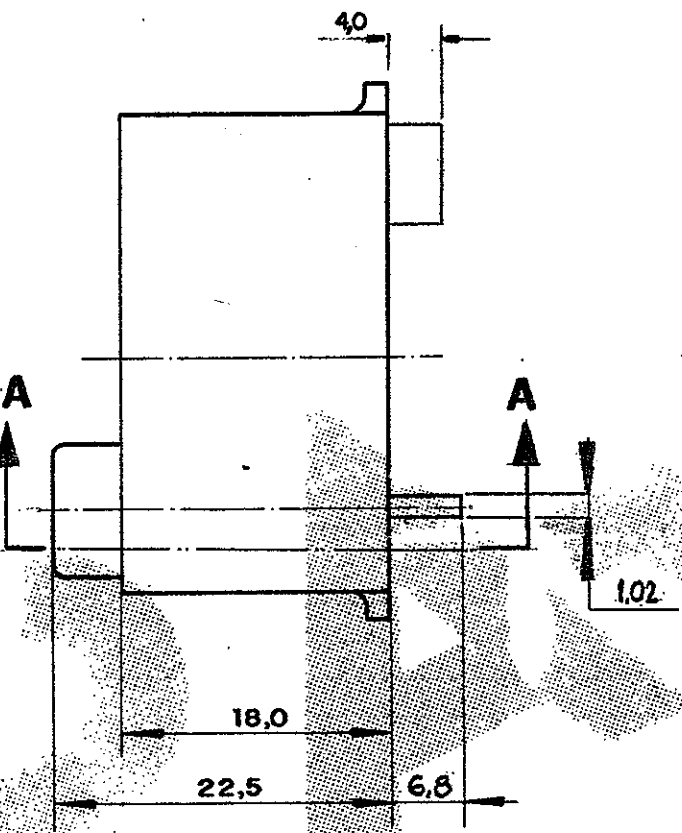
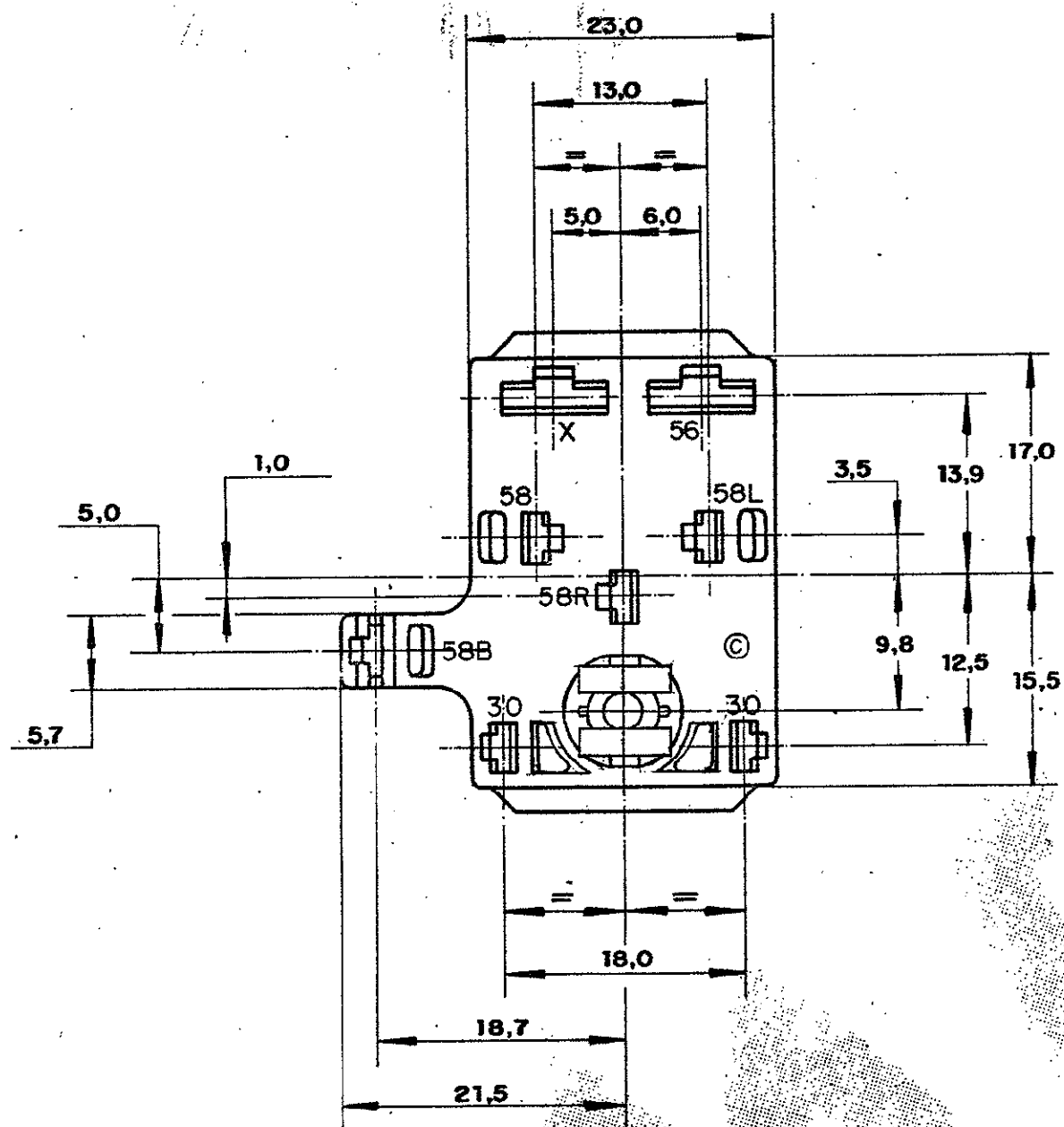


C 626243

DO NOT SCALE
DIMENSIONS IN METRIC
3rd ANGLE PROJECTION



SEÇÃO A-A

3
OBSOLETE

- ① - SEE RESTRICTED CUSTOMER DRAWING NUMBER 626 243-1.
- ② - CONNECTOR FOR .250 F-F, .110 F-F TERMINALS AND SPECIAL CONTACT 735 280 / 444 150
- ③ - OBSOLETE PARTS: OBSOLETE CIS STREAMLINING PER D.RENAUD/D.SINISI
- ① - VER DESENHO RESTRITO 626243-1.
- 2 - CONECTOR PARA TERMINAIS .250 F-F, .110 F-F E "SPECIAL CONTACT" 735280 / 444150

ITEM	FINISH	MATERIAL	DESCRIPTION	PART NUMBER
		NYLON 6.6	10WAY .110/.250 S. FASTIN- ON REC. HSG.	626 243 - 3
				626 243 - 2
				626 243 - 1

CUSTOMER DWG for REFERENCE ONLY				THIS DRAWING IS UNPUBLISHED RELEASED FOR PUBLICATION			
C4	REV PER ECO-09-026444	KK	AEG	17DEC09	© COPYRIGHT 1984 BY AMP DO BRASIL LTDA S.P. ALL INTERNATIONAL RIGHTS RESERVED AMP PRODUCTS MAY BE COVERED BY U.S. AND FOREIGN PATENTS AND/OR PATENTS PENDING.		
C3	REVISED BY EC:022-98	DAR.	REF. 13-FEB-98	DR	TOLERANCES UNLESS OTHERWISE STATED	INS. DIA. RANGE	
C2	REVISED EC334/96	NCL	SIGS 27-AUG-96	DR	DEC. ± 0,3	WIRE RANGE	
C1	REVISED EC265/96	MRB	28-7-96	DR	ANGLES ± 1°	SCALE	
C	REVISED	MRB	1-NOV-95	DR	AMP do BRASIL LTDA. São Paulo, Brasil		
B	RIVISED	DOI1	23-MAI-94	DR	DESCRIPTION HOUSING, 10 POSN., COMBINED		
A	REVISED	PF	21-5-91	DR	©		
ISS	REVISION RECORD	DR	CHK	DATE	APP.	A3 DWG NO C 626243 SHEET 1 of 1	