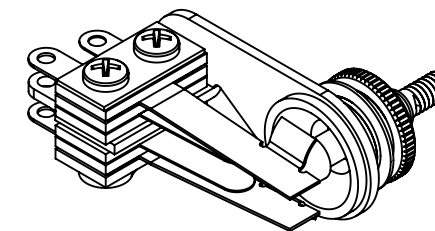
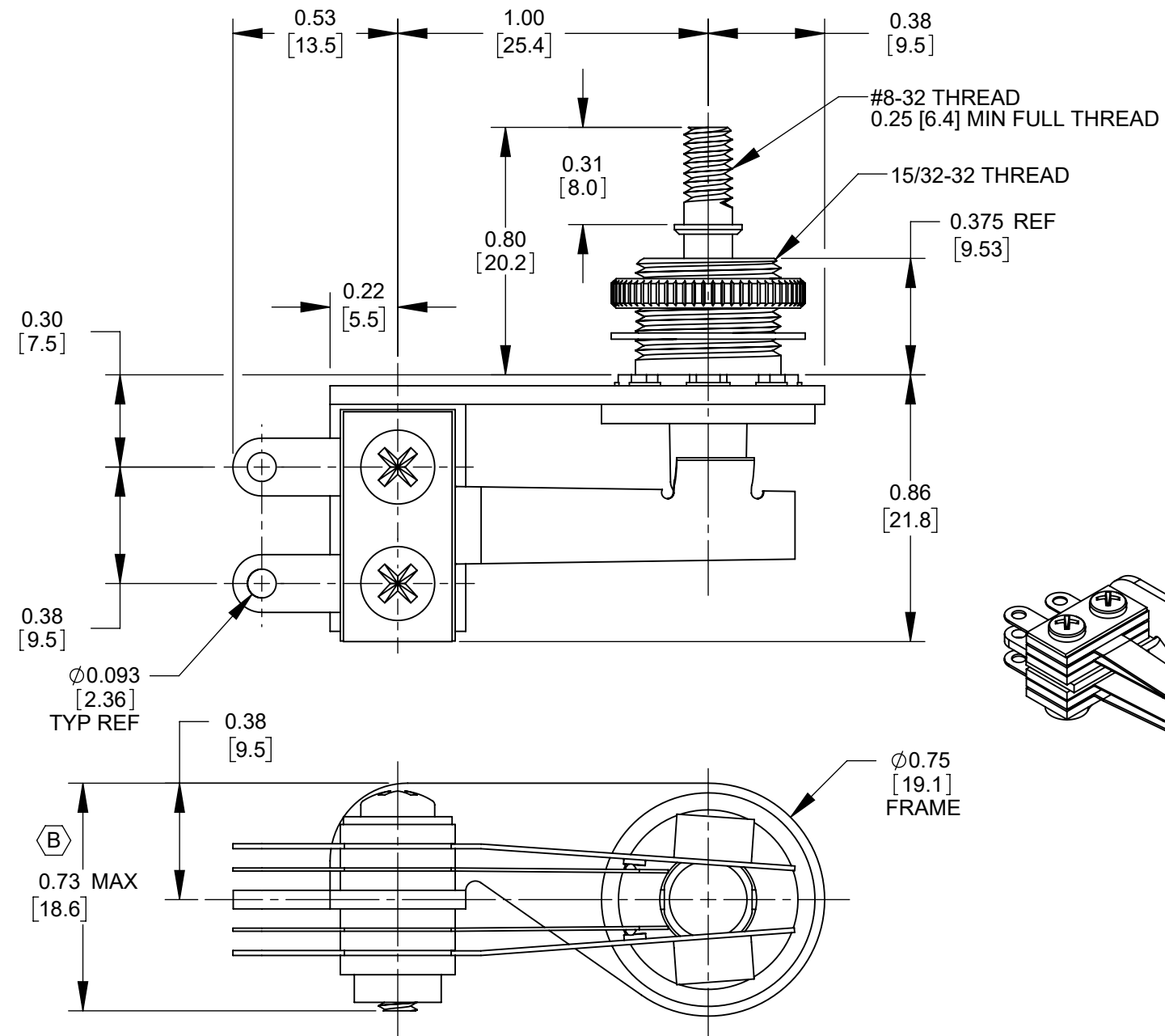
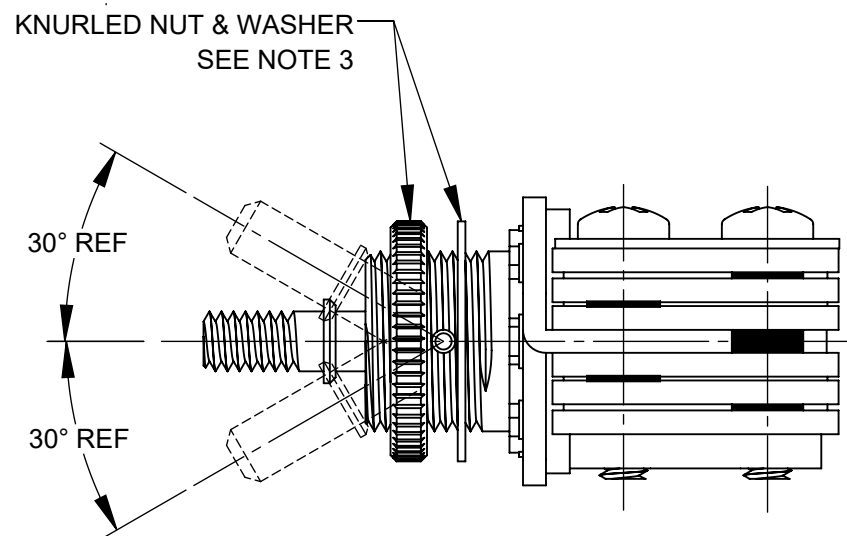




**SCHEMATIC**



**NOTES:**

1. MATERIALS:  
 FRAME - STEEL, NICKEL PLATED  
 SPRINGS - SPRING TEMPERED, NICKEL SILVER  
 BUSHING & SHAFT - BRASS, NICKEL PLATED  
 INSULATION - PHENOLIC  
 CONTACTS - GOLD  
 SCREWS - STEEL, NICKEL PLATED  
 SHAFT INSULATOR - NYLON  
 TUBING - THERMOPLASTIC  
 HARDWARE:  
 KNURLED NUT & WASHER - BRASS, NICKEL PLATED
2. ELECTRICAL CHARACTERISTICS:  
 - CONTACT RESISTANCE: 20 MILLIOHMS MAX  
 - CONTACT RATING: 3A, 300W MAX AC NON-INDUCTIVE LOAD  
 - LEAKAGE RESISTANCE: 1000 MEGAOHMS OR GREATER  
 - DIELECTRIC STRENGTH: 250 VDC
3. HARDWARE SHIPPED UNASSEMBLED.
4. THIS PRODUCT IS RoHS COMPLIANT.

**CUSTOMER DRAWING**

					THIS DRAWING DESCRIBES A DESIGN CONSIDERED PROPRIETARY IN NATURE, DEVELOPED AND MANUFACTURED BY SWITCHCRAFT INC. AND IS RELEASED ON A CONFIDENTIAL BASIS FOR IDENTIFICATION PURPOSES ONLY.								
					SIZE	WIDTH	MULT	LBS/M	TEMPER				
					UNLESS OTHERWISE SPECIFIED				FINISH	MATERIAL			
					1. ALL DIMENSIONS IN INCHES [mm]				SPEC No.	SPEC No.			
					- TWO PLACE DECIMALS ±0.02 [0.5]				FIRST USED ON		SCALE		
					- THREE PLACE DECIMALS ±0.005 [0.13]				DATE DRAWN		2:1		
					B		A		2/22/10		RS		
					28409		26082		RS		RS		
					07/09/21		07/07/06		2/22/10		03/11/20		
					PC		PC		TJK		TJK		
					TJK		TJK		TJK		TJK		
					REV		ECO NUMBER		DATE		BY		
					APVD								
					DO NOT SCALE DRAWING					NAME		PART No.	REV
										12000 SERIES RIGHT-ANGLE LEVER SWITCH, 3 POSITION LOCKING, RoHS		12017X	B
										SHEET 1 OF 1			