

DESCRIPTION: MALE - SOLDER CUP - MACHINED - ECONOMY

**SPECIFICATIONS:**

**MATERIALS:**

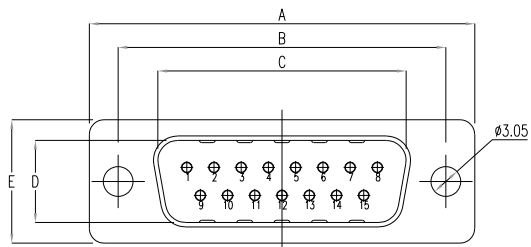
INSULATOR: GLASS-FILLED NYLON THERMOPLASTIC, UL94 V-0  
 PROCESS TEMP: 260°C  
 CONTACTS: GOLD PLATED BRASS  
 SHELL: NICKEL PLATED STEEL

**ELECTRICAL:**

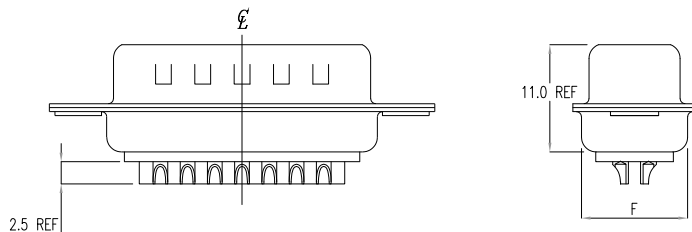
RATED CURRENT: 5A  
 WORKING VOLTAGE: 250VAC  
 INSULATION RESISTANCE: 1000 MOhms MIN.  
 CONTACT RESISTANCE: 15 mOhms MAX.

**ENVIRONMENT:**

OPERATING TEMPERATURE: -55°C TO +125°C

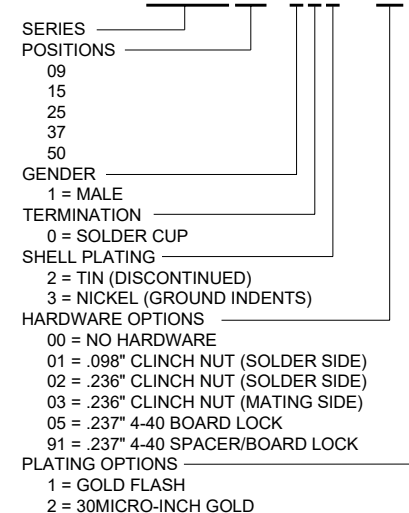


WILL ACCEPT 26-20 AWG WIRE



DIMENSIONS(mm)						
SIZE	A <sup>+0.39</sup> <sub>-0.39</sub>	B <sup>+0.25</sup> <sub>-0.25</sub>	C <sup>+0.25</sup> <sub>-0.25</sub>	D <sup>+0.25</sup> <sub>-0.34</sub>	E <sup>+0.38</sup> <sub>-0.38</sub>	F <sup>+0.25</sup> <sub>-0.25</sub>
9	30.81	24.99	16.92	8.36	12.55	10.80
15	39.19	33.32	25.25	8.36	12.55	10.80
25	53.04	47.04	38.96	8.36	12.55	10.80
37	69.32	63.50	55.42	8.36	12.55	10.80
50	67.00	61.10	52.80	11.26	15.40	13.30

**172-EYY-10YRYY1**



RoHS COMPLIANT

UNITS = mm

DO NOT SCALE FROM DRAWING



THESE DRAWINGS AND SPECIFICATIONS ARE THE PROPERTY OF NorComp AND SHALL NOT BE REPRODUCED, COPIED OR USED AS THE BASIS FOR THE MANUFACTURE OR SALE OF APPARATUS WITHOUT WRITTEN PERMISSION.

DRAWN:  
P. JENKINS

DATE:  
11/28/2005

NorComp

SCALE:  
NTS

SHEET 1 OF 2

REV 18

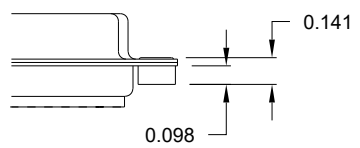
DWG NO.

172-EYY-10YRYY1

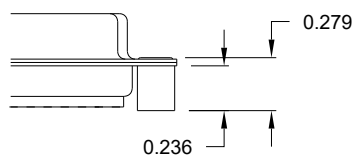
**TOLERANCE:**  
ALL DIMENSIONS ARE ±0.010

**ALL CLINCH-NUTS ARE 4-40 INTERNAL THREADS**

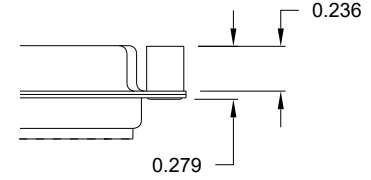
01 ..... 0.098" (SOLDER SIDE)



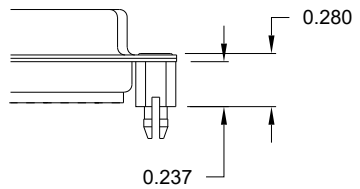
02 ..... 0.236" (SOLDER SIDE)



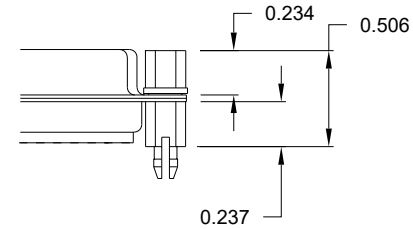
03 ..... 0.236" (MATING SIDE)



05 ..... 0.237" (SOLDER SIDE)



91 ..... 0.237" (SOLDER SIDE)



NOTE: 4-40 FEMALE SCREW LOCK IS REMOVABLE

**RoHS COMPLIANT**

UNITS = inch

**DO NOT SCALE FROM DRAWING**



THESE DRAWINGS AND SPECIFICATIONS ARE THE PROPERTY OF NorComp AND SHALL NOT BE REPRODUCED, COPIED OR USED AS THE BASIS FOR THE MANUFACTURE OR SALE OF APPARATUS WITHOUT WRITTEN PERMISSION.

DRAWN:  
**P. JENKINS**  
DATE:  
**11/28/2005**

**NorComp**

SCALE: NTS	SHEET 2	OF 2	REV 18
DWG NO. <b>172-EYY-10YRY1</b>			