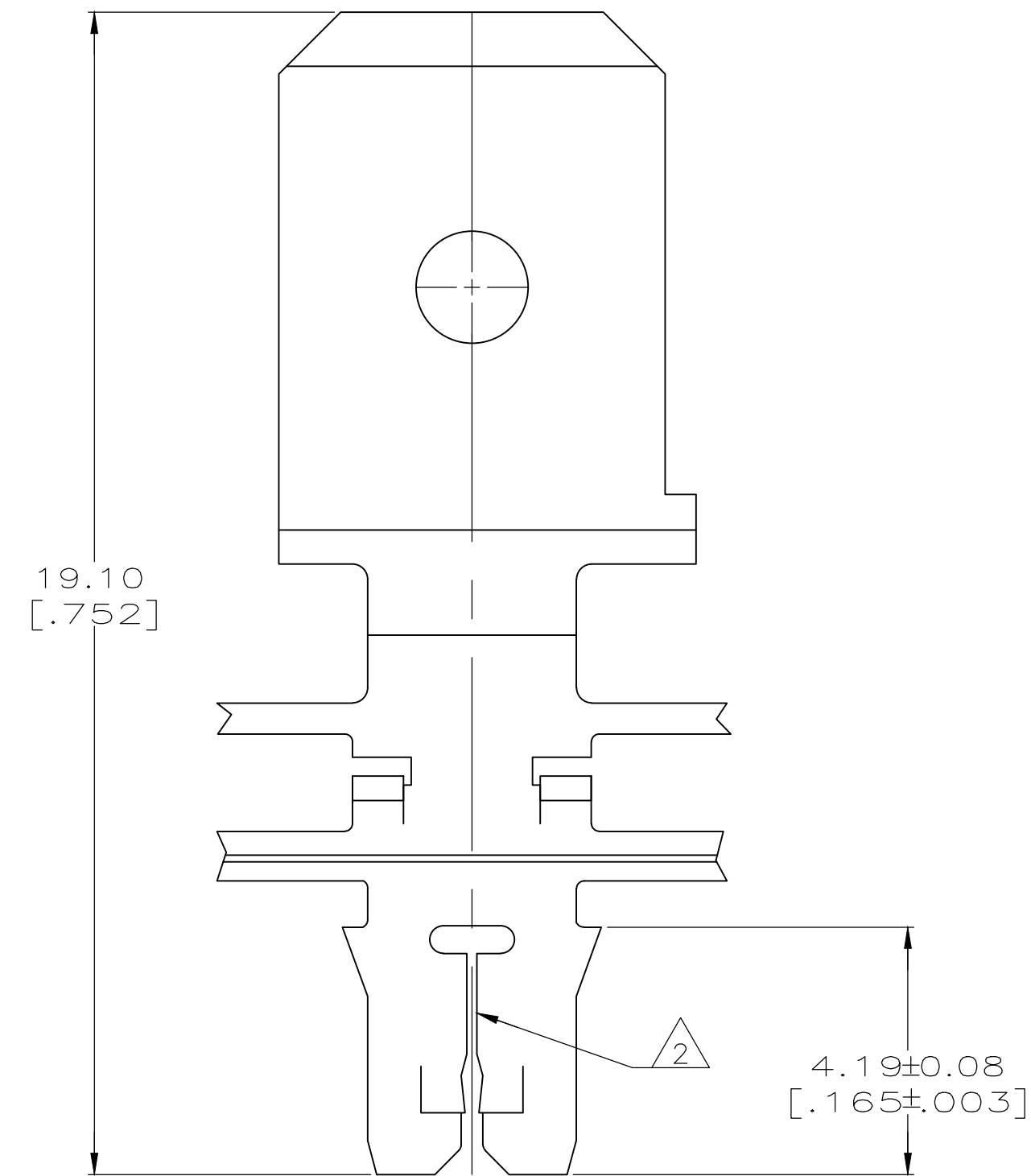
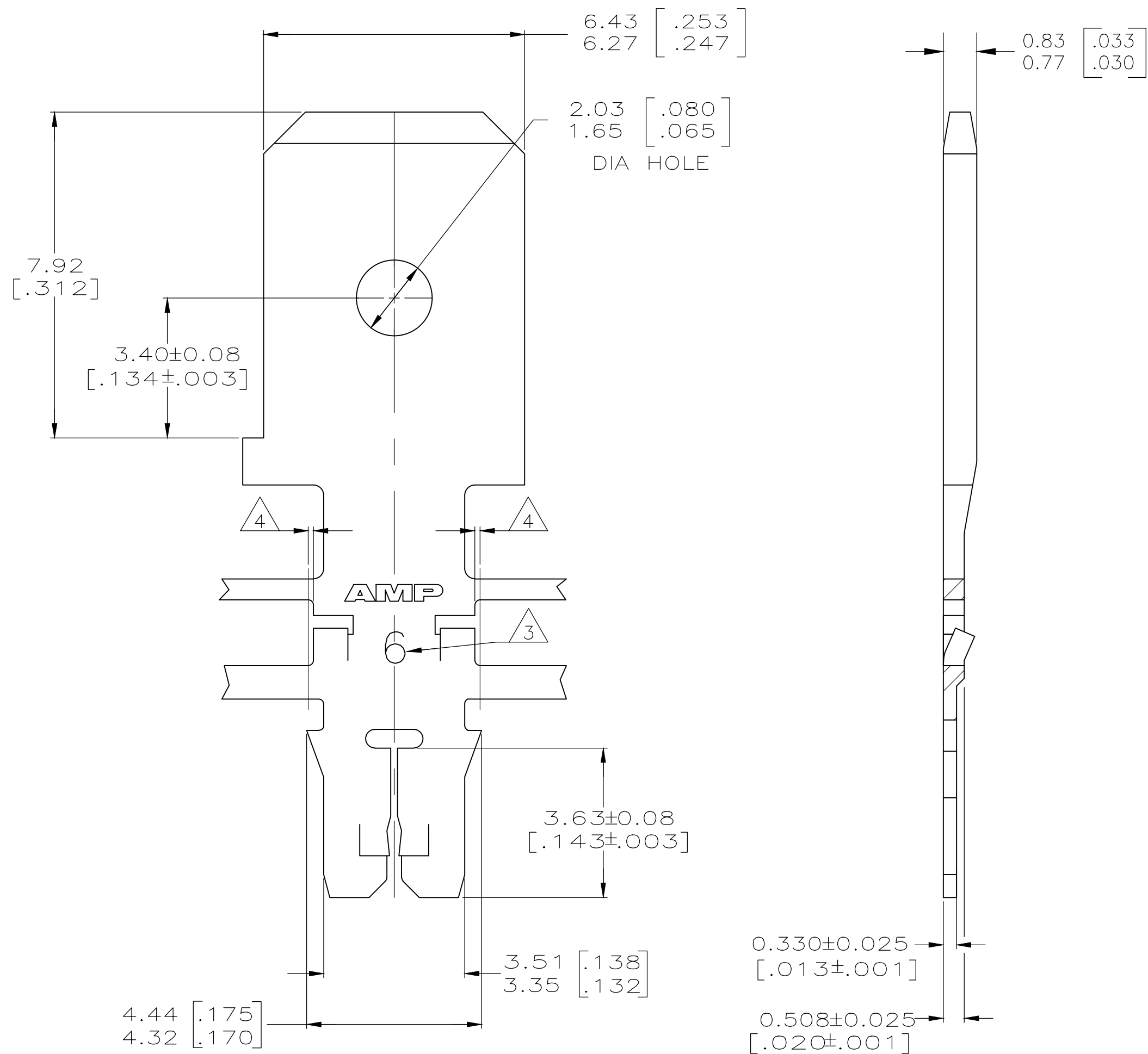


THIS DRAWING IS UNPUBLISHED. RELEASED FOR PUBLICATION
 © COPYRIGHT - TE Connectivity Ltd. ALL RIGHTS RESERVED.

REVISIONS					
P	LTR	DESCRIPTION	DATE	DWN	APVD
G2		REVISED PER ECR-18-018655	11DEC2018	BW	SV

- 1 CONTINUOUS STRIP ON REELS WITH TERMINALS LOCATED ON 8.38±0.08 [.330±.003] CENTERS.
- 2 SLOT ACCEPTS 0.25-0.32mm [#30-#28] AWG COPPER MAGNET WIRE. TWO WIRES OF THE SAME SIZE MAX PER SLOT
- 3 IDENTIFICATION NUMBER 6 FOR THE MAGNET WIRE SLOT SIZE
- 4 0.25 [.010] MAX CARRIER CUT-OFF TABS.
- 5 PRE-PRODUCTION - F.A.S.R. REQUIRED.



OBSOLETE	082 PRE-MILLED BRASS	5	63717-2
	4M PRE-MILLED BRASS		63717-1
MATERIAL		PART NUMBER	

THIS DRAWING IS A CONTROLLED DOCUMENT.		DWN	L.A.MAYER	9-27-93	TE Connectivity Ltd.										
DIMENSIONS: mm[INCHES]		CHK	M.S. FEHER	9-27-93											
TOLERANCES UNLESS OTHERWISE SPECIFIED:		APVD	A.HUNT	9-27-93											
0 PLC ± - 1 PLC ± - 2 PLC ± 0.13 [.005] 3 PLC ± - 4 PLC ± - ANGLES ± -		PRODUCT SPEC	108-1484	NAME		TAB, 6.35 [.250] FASTON™ MAG-MATE™ Slim Line									
MATERIAL	SEE TABLE	FINISH	0.002032 [.000080] MIN TIN PLATE	WEIGHT	-	SIZE	A2	CAGE CODE	00779	DRAWING NO	C=63717	RESTRICTED TO	-		
CUSTOMER DRAWING										SCALE	10:1	SHEET	1 of 1	REV	G2