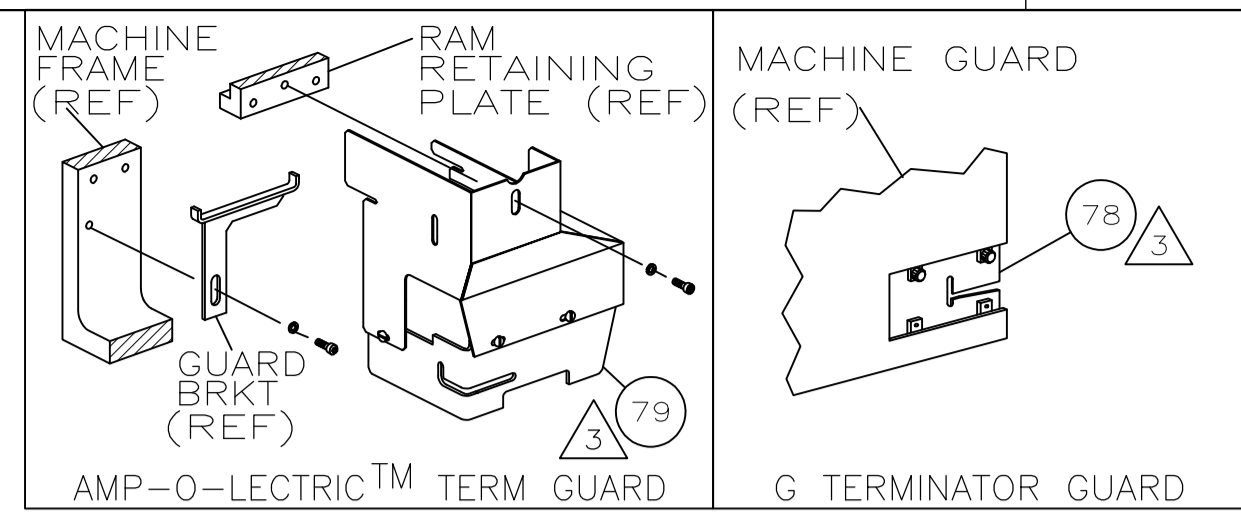
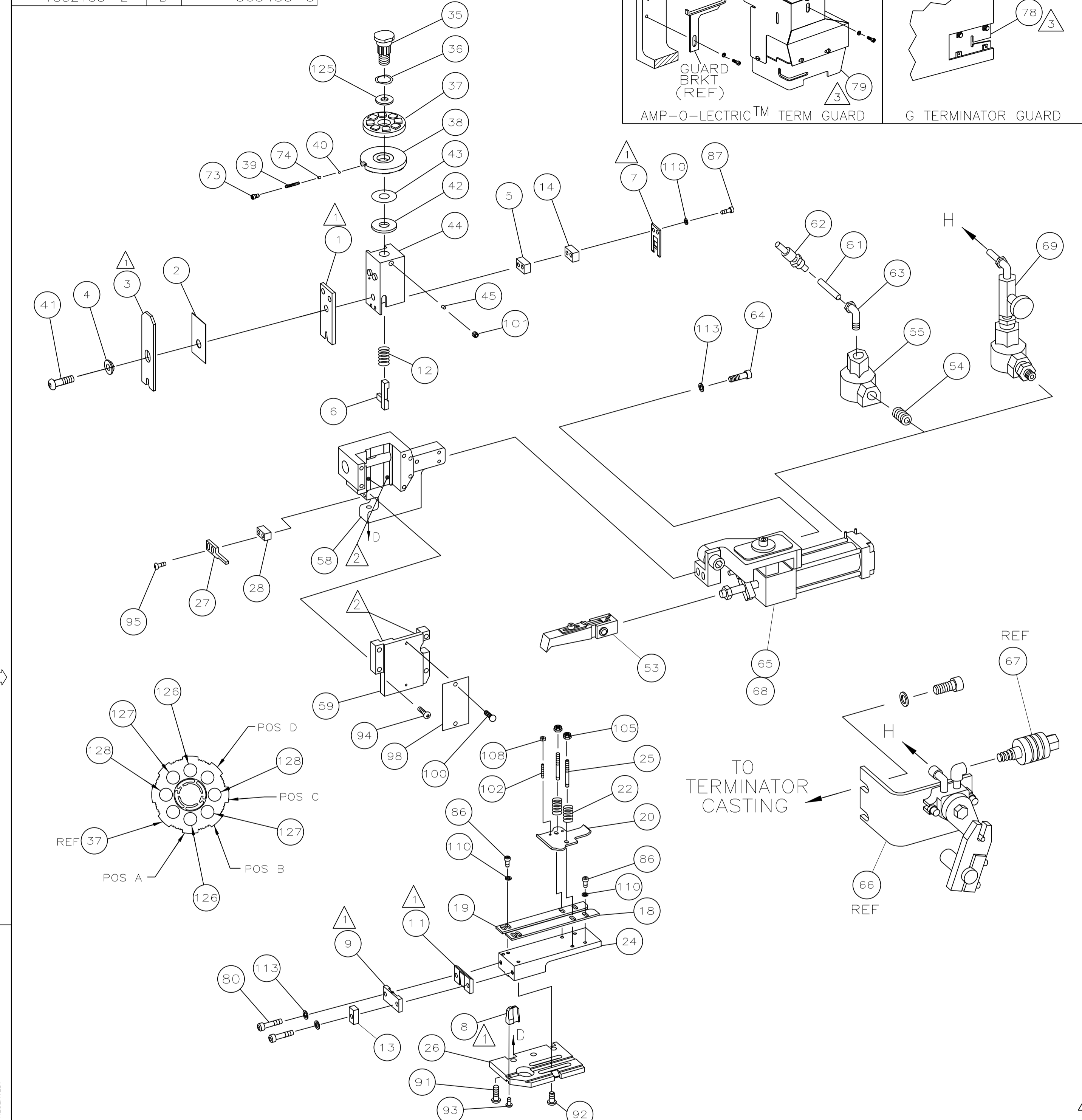


PART NUMBER	REV	FIRST USED
1852135-1	B	122500-1
1852135-2	B	565435-5



TERMINAL NAME: TERMINAL, RING			
AMP	TERM PN	MFR TERM PN	
286714	-1	101434	-S02
		PAD LTR	
		CRIMP HEIGHT	
		WIRE SIZE	
A	.103 ±.002	[2.62 ±.05mm]	14 AWG
B	.096 ±.002	[2.44 ±.05mm]	16 AWG
C	.091 ±.002	[2.31 ±.05mm]	18 AWG
D	NOT USED		
CRIMP	SIZE	TYPE	RANGE
WIRE	.140	[3.56mm]	F
INSUL	.190	[4.83mm]	F
			.100-.150
WIRE STRIP LENGTH	TERM APPL	SPEC	FEED
.203-.234	NONE		1.300
		APPL INSTRUCTION	408-8039
		SET UP GAGE	458638-1
		LAYOUT	L2070

		LEADMAKER & BENCH MODEL G	AIR FEED				
		BENCH MODEL K	AIR FEED				
1	1	-	C	692655-5	AIR FEED VALVE ASSY	70	
1	1	-	C	1-460277-9	AIR FEED ASSY (2 INCH)	68	
REF	-	-	A	24042-2	VALVE, SHUT OFF	67	
REF	-	-	C	692655-6	AIR FEED VALVE ASSY	66	
-	1	-	B	1-460277-5	AIR FEED ASSY (2 INCH)	65	
2	2	-	A	3-21000-9	SCR,SHC(10-32x1.00)AIR ASSY	64	
-	1	-	A	980285-2	ELBOW, SWIVEL 1/8 NPT - 1/4 T	63	
-	1	-	A	23238-1	QUICK DISCONNECT	62	
-	12.00	IN	A	27319-4	TUBING, POLY-FLO Ø.25	61	
1	1	-	C	454220-1	CAP, RAM	59	
1	1	-	D	453736-1	HOUSING	58	
						57	
						56	
-	1	-	A	22374-7	VALVE, QUICK EXHAUST	55	
-	1	-	A	22304-1	NIPPLE, HEX	54	
4	1	1	-	B	460680-1	FEED FINGER ASSY	53
						52	
						51	
						50	
						49	
						48	
						47	
						46	
1	1	-	A	690191-1	PLUG, NYLON	45	
1	1	-	C	455674-1	RAM	44	
1	1	-	A	690125-1	WASHER, LAMINATED	43	
1	1	-	A	690124-1	WASHER, RAM	42	
1	1	-	A	7-21002-9	BOLT, CRIMPER(5/16-24x1.00)	41	
1	1	-	A	23241-6	BALL, STEEL	40	
1	1	-	A	690170-1	SPRING, COMPRESSION	39	
1	1	-	C	690142-1	DISC, INSULATION	38	
1	1	-	D	354777-1	DISC, WIRE	37	
1	1	-	A	22480-5	WASHER, SPRING	36	
1	1	-	B	690212-1	POST, RAM	35	
						34	
						33	
						32	
						31	
						30	
						29	
1	1	-	B	3-690451-2	SPACER, STRIPPER	28	
1	1	-	A	240639-1	STRIPPER	27	
1	1	-	D	455676-2	PLATE, BASE	26	
2	2	-	A	22354-8	DRAG, STUD	25	
1	1	-	B	455678-2	PLATE, STRIP GUIDE	24	
						23	
2	2	-	A	4-22281-1	SPRING, DRAG	22	
						21	
1	1	-	A	454177-1	DRAG, STOCK	20	
1	1	-	B	6-458030-7	GUIDE, STRIP (REAR)	19	
1	1	-	C	6-458031-7	GUIDE, STRIP (FRONT)	18	
						17	
						16	
						15	
1	1	-	C	6-240641-8	SPACER, SLUG BLADE	14	
1	1	-	C	1-690481-2	SPACER, HOLD DOWN	13	
1	1	-	A	8-22282-9	SPRING, HOLD DOWN	12	
1	1	-	B	240644-1	PLATE, REAR SHEAR	11	
						10	
1	1	-	B	690482-3	PLATE, FRONT SHEAR	9	
1	1	-	D	6-461295-3	ANVIL	8	
1	1	-	B	690474-3	BLADE, SLUG	7	
1	1	-	D	6-455892-1	HOLD DOWN, TERMINAL	6	
1	1	-	C	7-240641-2	SPACER, SLUG BLADE	5	
1	1	-	B	238009-1	SPACER, BLOCK CRIMPER	4	
1	1	-	C	9-456134-6	CRIMPER, INSULATION	3	
1	1	-	B	455888-5	SPACER, CRIMPER	2	
1	1	-	C	456425-8	CRIMPER, WIRE	1	



- 1 RECOMMENDED SPARE PARTS.
- 2 GREASE LIGHTLY.
- 3 GUARD MUST BE IN PLACE WHEN OPERATING APPLICATOR IN A BENCH MACHINE.
- 4 SEE DRAWING FOR COMPONENTS
- 5 ITEM 78 USED WITH G TERMINATOR ONLY.

QTY	REQD	PER	ASSY	PART NO	DESCRIPTION	ITEM NO
2	2	-	C	6-354778-1	PIN, WIRE DISC (.2800)C	129
2	2	-	C	5-354778-1	PIN, WIRE DISC (.2750)B	128
2	2	-	C	3-354778-7	PIN, WIRE DISC (.2680)A	126
1	1	-	A	986950-1	WASHER, FLAT PRECISION	125
1	1	-	A	217238-1	GENERAL INSTRUCTION PACKAGE	124
1	1	-	-	4088039	EF APPL INST 408-8039	123
						122
						121
						120
						119
						118
						117
						116
						115
						114
4	4	-	A	21024-5	WASHER,LOCK(#10)AIR ASSY	113
						112
						111
4	4	-	A	21024-4	WASHER,LOCK(NO.8)SHEAR BL	110
						109
2	2	-	A	21018-4	NUT,HEX(4-40)DRAG	108
						107
						106
2	2	-	A	21022-2	NUT,HEX SL(8-32)DRAG STUD	105
						104
						103
2	2	-	A	2-21006-6	SCR,SKT SET(4-40x.62)DRAG	102
1	1	-	A	21009-2	SCR,SKT SET(1/4-20x.25)RAM	101
2	2	-	A	21017-2	SCR,DRIVE(#2x.19)ID PLATE	100
						99
1	1	-	B	461264-1	PLATE, IDENTIFICATION	98
						97
						96
2	2	-	A	2-21002-2	SCR,BHC(8-32x.50)STRIPPER	95
4	4	-	A	2-21002-9	SCR,BHC(10-32x.75)CAP	94
1	1	-	A	22733-8	SCR,BHC(8-32x.38 LW)ANVIL	93
4	4	-	A	3-21002-3	SCR,BHC(1/4-20x.50)ST GD PL	92
3	3	-	A	2-22733-8	SCR,BHC(1/4-20x.62)HSG	91
						90
						89
						88
2	2	-	A	3-21000-1	SCR,SHC(8-32x1.00)SLUG BLADE	87
4	4	-	A	2-21000-5	SCR,SHC(8-32x.25)STRIP GUIDE	86
						85
						84
						83
						82
						81
2	2	-	A	3-21000-8	SCR,SHC(10-32x.88)SHEAR PL	80
1	-	-	A	455750-7	GUARD ASSY	79
-	REF	-	A	679532-1	INSERT, GUARD	78
						77
						76
						75
1	1	-	A	690603-1	SPRING, ASSIST	74
1	1	-	A	23030-1	SCR,SKT CAP(6-32x.25)CP DSC	73
						72
						71

QTY	REQD	PER	ASSY	U/M	DWG SIZE	PART NO	DESCRIPTION	ITEM NO

THIS DRAWING IS A CONTROLLED DOCUMENT.
 THIS DRAWING IS UNCLASSIFIED
 DATE 03-19-2008 BY 60380 JAW/STP
 OCTOBER 27 2005
 RELEASED FOR PUBLICATION
 BY AMP INCORPORATED. ALL RIGHTS RESERVED.
 COPYRIGHT 2005

LOC A
 DIST 66
 AMP 1756 REV 3-92
 Transilvania 0324-101564
 Computer Vision, Inc., Redwood City, CA 94063
 Revision 1852135

SCALE	DWG NO	1852135	SHEET 1 OF 1	REV B
REVISION RECORD				
DATE	BY	APPROVED	DESCRIPTION	
JULY 2014	JH		REVISION	
MACHINE REF				
END FEED HDM APPLICATOR				
MATERIAL FIN				
MATL	HT TR	FIN		
DIMENSIONS IN INCHES. DO NOT SCALE PRINT.				
TOLERANCES UNLESS OTHERWISE SPECIFIED:				
2	PLC DEC	±.25		
3	PLC DEC	±		
4	PLC DEC	±		
ANGLES ±				
SURF TEXTURE: REMOVE BURRS, BREAK SHARP EDGES R.015 MAX				
HARRISBURG, PA 17105-3608				
CUSTOMER AND ASSEMBLY DRAWING				