

THIS DRAWING IS UNPUBLISHED. RELEASED FOR PUBLICATION
 © COPYRIGHT BY TYCO ELECTRONICS CORPORATION. ALL RIGHTS RESERVED.

PART NUMBER	REV	FIRST USED
566219-1	A	-

LOC	DIST	REVISIONS					
A	66	P	LTR	DESCRIPTION	DATE	DWN	APVD
		A3		ECN 0150-0081-05	1-05	MY	TE

APPLICATOR PARTS LIST				TYPE REAR SHEAR BUTT SPLICE 30° ROTATED			AMP INCORPORATED HARRISBURG, PENNA.			
NO.	DESCRIPTION	REQ.	PART NO.	NO.	DESCRIPTION	REQ.	PART NO.	CRIMPING DATA		TERMINALS
1	WIRE CRIMPER REAR	1	453938-1	42				TO APPLY TERMINAL		62419
2	INS. CRIMPER	1	1-465264-2	43				WIRE SIZE	CRIMP HEIGHT	
3	ANVIL	1	463109-1	44				A 18	.063	
4	WIRE CRIMPER FRONT	1	1-471988-4	45				B HEATER	.079	
5	SHEAR FLOATING	1	465374-2	46				CRIMP	SIZE	TYPE
6	REAR SHEAR PLATE	1	811239-1	47				R WIRE	.110	F
7	SHEAR DEPRESSOR	1	387265-4	48				F WIRE	.110	0
8	FRONT SHEAR PLATE			49				SLEEVED	.180	0
9	SPACER DEPRESSOR	1	370570	50	SPACER (BET 1 & 4)	1	370693	WIRE RANGE		
10	FRONT ANVIL SPACER PLT.			51	SPRING SHEAR	1	387083	.135-.170	A:18	B:HEATER WIRE
11	TOOL SPACER	1	470493-4	52				EXPLODED VIEW		
12	CRIMP SPACER	1	387774	53				REMARKS:		
13	FRONT STRIP GUIDE	1	465320-2	54	SPACER, FRT. GUARD	1	811286-3	▲ MT. ON ITEM 14		
14	REAR STRIP GUIDE	1	465350-9	55	1/32 THK.			TOP TOOL MOUNTING SEQUENCE 9,7,11,1,50,4		
15	RAM	1	471167	56				12 E 17		
16	TOOL HOLDER	1	465325-2	58				SCREW, SOC. NO. 8-32 X .165 L6		
17	ADJ. CRIMP MOUNT	1	811101-1	59				3 811651-3		
18	ADJ. BLOCK	1	811102-1	60				MISCELLANEOUS		
19	APPLICATOR MOUNT ASSY.			61				LUBRICATOR ASSY		
20	BASE PLATE	1	465317-1	62				SYNTHETIC OIL		
21	BASE BLOCK	1	465894-1	63				MOUNT, REEL BRK. ASSY. 30°		
22	STRIP GUIDE PLATE	1	465895-1	64	1" AIR FEED ASSY	1	690021-1	EXTENSION, MT. AIR FEED		
23	ANVIL HOLDER	1	811838-2	65	TENSION ADJ. PLATE	1	810504	AIR FEED		
24	AUX. ANVIL HOLDER	1	811839-2	66				DIST.		
25	STRIPPER	1	465896-1	67				SERIAL NO.		
26	STRIPPER MOUNT	1	465897-1	68				DATE SHIPPED		
27	RETAINER PLATE			69				DESIGNED		
28	STRIPPER STOP	1	811259-1	69				CHA'D.		
29	STRIPPER BUSHING	1	386368	70				APP'D.		
30	STOCK DRAG	1	387650-4	71				APPLICATOR		
31	STOCK DRAG NUT	1	21018-5	72				REV.		
32	STOCK DRAG STUD	1	386416					SHEET		
33	STOCK DRAG SPRING	1	810135					OF		
34	STOCK DRAG ADJ. SCREW	1	2-21006-9							
35	FEED FINGER HOLDER	1	386942							
36	FEED FINGER	1	386941							
37	FEED FINGER TIP	1	387251							
38	FEED FINGER GUIDE	1	693680-1							
39	BASE CASTING	1	570238							
40	GUARD	1	461028-1							
41										

THIS DRAWING IS A CONTROLLED DOCUMENT.

DIMENSIONS: INCHES	TOLERANCES UNLESS OTHERWISE SPECIFIED:	DWN M. YOUNGER 25 JAN 05	tyco Tyco Electronics Corporation Harrisburg, Pa 17105-3608
	0 PLC ± -	CHK C. ERISMAN 27 JAN 2005	
	1 PLC ± -	APVD T. ELBIN 27 JAN 2005	
	2 PLC ± -	NAME	
	3 PLC ± -	PRODUCT SPEC	SIDE FEED STANDARD APPLICATOR
	4 PLC ± -	APPLICATION SPEC	
MATERIAL	ANGLES ± -	SIZE	A2
	FINISH	CAGE CODE	00779
		DRAWING NO	C-566219-1
		RESTRICTED TO	-
		WEIGHT	-
		CUSTOMER DRAWING	SCALE - SHEET 1 OF 5 REV A3

AMP 880 (3/63) **APPLICATOR PARTS LIST (BOLT, NUT, SCREW, WASHER etc.)** 668 4.4

NO.	DESCRIPTION	SIZE	LGTH.	REQ.	PART NO.	NO.	DESCRIPTION	SIZE	LGTH.	REQ.	PART NO.
100	Screw, Soc.Hd.Cap	1/2-20	5/8	3	21001-3	123	Screw, Soc.Hd.Cap	8-32	1/2	1	2-21000-5
	Base Pl.(20)to Base Blk.(21)						Stripper Stop(28)To Stripper Mt.(26)				
101	Screw, Soc.Hd.Cap	1/2-20	5/8	2	21001-3	124	Screw, But.Hd.	8-32	3/8	1	2-21002-1
	Strip Guide Pl.(22)to Base Blk.(21)						Stripper(25)Bushing(29)To Stripper Mt.(26)				
102	Screw, Soc.Hd.Cap	10-32	3/8	2	3-21000-1	125	Screw, Soc.Hd.Cap.	8-32	1/2	1	2-21000-5
	Shear Plate (6) To Base Blk.(21)					126	Washer, Flat	8 I.D.		1	21055-6
103	Screw, Soc.Hd.Cap	10-32	5/8	2	3-21000-6		Tension Adj.Pl.(65)To Feed Finger Holder (35)				
	Anvil Holder(23)& Aux.AnvilHolder(24)To Base Blk.(21)					127	Screw, Soc.Hd.Cap	10-32	1/2	1	3-21000-5
104	Screw, Soc.Hd.Cap	8-32	1	2	3-21000-1		Feed Finger (36) To Feed Finger Holder (37)				
	Aux. Anvil Holder(24)Anvil(3)To Anvil Holder(23)					128	Screw, Set	5-10	3/8	1	2-21006-1
105	Screw, Soc.Hd.Cap	8-32	3/8	2	2-21000-6		Feed Finger Tip(37) To Feed Finger (36)				
106	Washer, Flat	8 I.D.		2	21055-6	129	Screw, Soc.Hd.Cap	8-32	3/8	1	2-21000-6
	Front Strip Guide(13)To Strip Guide Pl.(22)					130	Washer, Flat	8 I.D.		1	21055-6
107	Screw, Soc.Hd.Cap	8-32	3/8	2	2-21000-6		Rear Guard (41) To Stripper Mt.(26)				
108	Washer, Flat	8 I.D.		2	21055-6	131	Screw, Soc.Hd.Cap	8-32	5/8	2	2-21000-8
	Rear Strip Guide (14) To Strip Guide Pl.(22)						Front Guard(40)& Spacer(54)To Strip Guide Pl.(22)				
109	Screw, Soc.Hd.Cap	3/8-16	1 1/2	2	3-21001-6	132					
	Reel Brk.Assy(67)Air Feed Valve Mt.(14)Air Blast Press Casting					133					
110	Nut, Hex S/L	10-32		1	21021-4						
	Drag Stud (32)					134	Screw, Button Hd. Cap	8-32	1/2	1	2-21002-0
111	Screw, Soc.Hd.Cap	1/2-20	1	2	21001-4	APPLICATOR ONLY TO INCLUDE					
	Feed Cyl. Spacer(17)Between Cyl.& Top Brk.					135	Washer, Flat	8 I.D.		1	21055-6
113	Screw, Soc.Hd.Cap	1/2-20	1	2	21001-6		Adj.Ins. Crimper Insert()To Adj.Ins.Crimper Mt.(17)				
114	Washer, Flat	1/2 I.D.		2	21055-8	136	Washer, Flat	8 I.D.		1	21055-6
	Air Feed Assy.(64) TO EXT. BRK. (63)						Stripper(25)Bushing(29)To Stripper Mt.(26)				
115	Screw, Soc.Hd.Cap	1/2-20	1	1	21001-6	137	Nut, Hex	5-10		1	1-21018-2
	Air Feed Assy.Mt.(15)To Base Pl.(20)						Feed Finger Tip(37)To Feed Finger(36)				
116	Screw, Hex Hd.	3/8-16	1 1/2	1	3-21015-3	139	SCREW, SOC. HD. CAP	6-32	1/4	1	1-21000-8
	Sub Assy.(68)Air Feed Assy.Mt.(15)Base Pl.(20)To Casting(39)						CHIP DEFLECTOR (61)N(71) TO REAR SHEAR (6)				
117	Screw, Hex.Hd.	3/8x16	1 1/2	2	3-21015-2						
118	Washer	3/8 I.D.		2	371178						
119	Screw, Set, Soc.Hd.	S/L	1/2-20	1	2-21549-3						
	Ram Pin To Ram (15)										
120	Pin, Slotted Spring	.012 Dia.	1 5/8	1	7-21029-0						
	Tool Holder (16) To Ram (15)										
121	Screw, Soc.Hd.Cap	1/2-20	1 3/4	2	21001-9						
	Top Tooling To Tool Holder (16)										
122	Screw, Soc.Hd.Cap	8-32	1	2	3-21000-1						
	Stripper Mt.(26)To Strip Guide Pl.(22)										

THIS DRAWING IS A CONTROLLED DOCUMENT.

DWN M. YOUNGER 25 JAN 05
 CHK C. ERISMAN 27 JAN 2005
 APVD T. ELBIN 27 JAN 2005

Tyco Electronics Corporation
 Harrisburg, Pa 17105-3608

PRODUCT SPEC
 APPLICATION SPEC

SIDE FEED STANDARD APPLICATOR

SIZE A2 CAGE CODE 00779 DRAWING NO. C-566219-1 RESTRICTED TO -

WEIGHT -

CUSTOMER DRAWING SCALE 1:1 SHEET 2 OF 5 REV A3

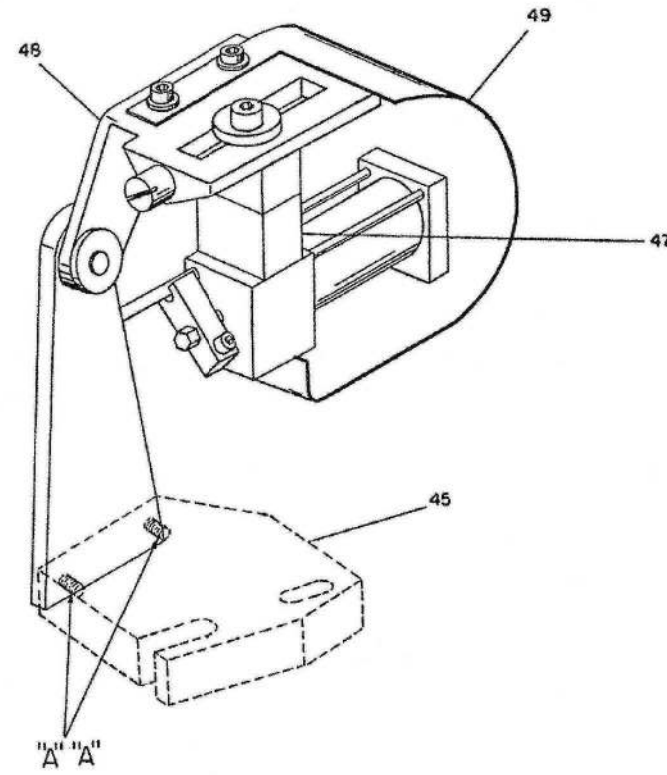
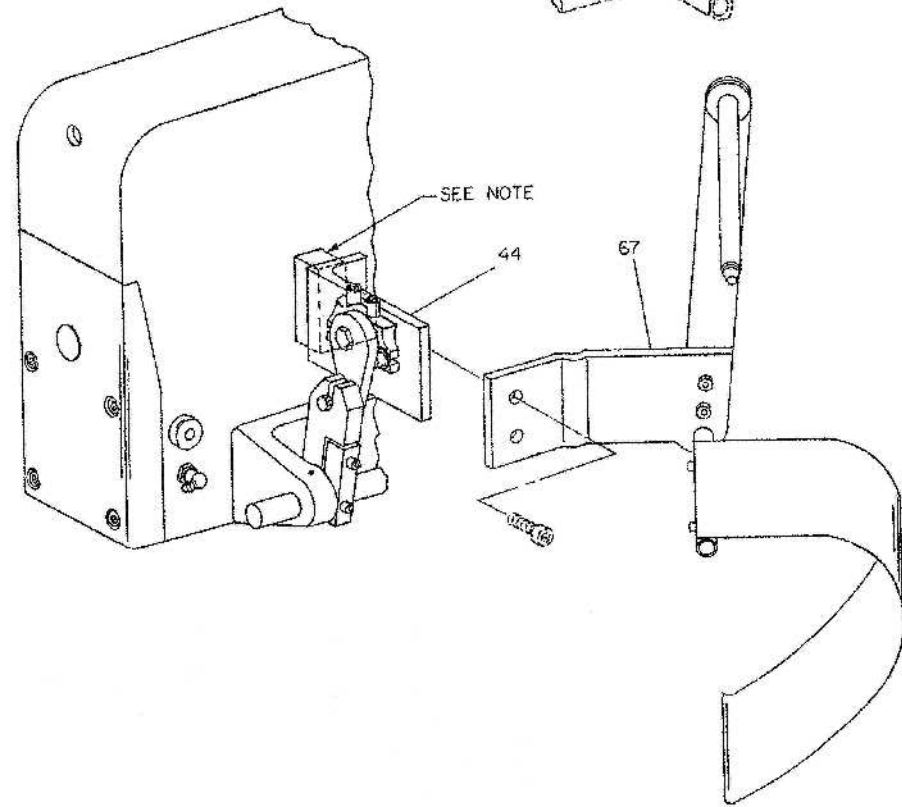
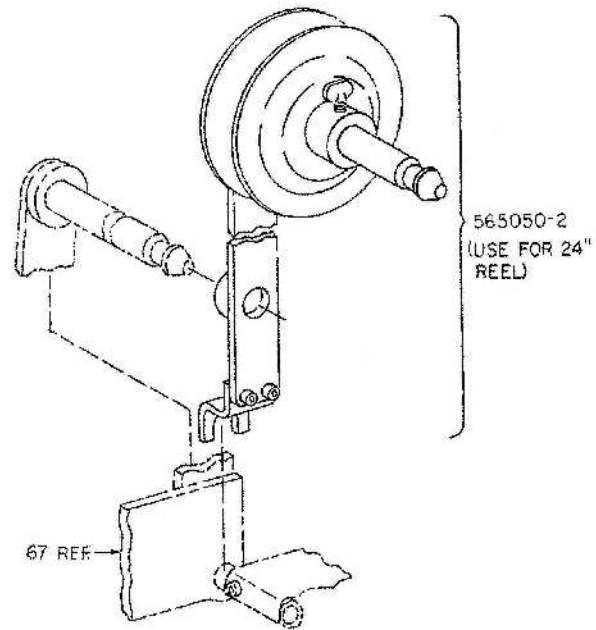
DIMENSIONS: INCHES
 TOLERANCES UNLESS OTHERWISE SPECIFIED:
 0 PLC ± -
 1 PLC ± -
 2 PLC ± -
 3 PLC ± -
 4 PLC ± -
 ANGLES ± -
 FINISH -

566219-1

THIS DRAWING IS UNPUBLISHED. RELEASED FOR PUBLICATION
 © COPYRIGHT BY TYCO ELECTRONICS CORPORATION. ALL RIGHTS RESERVED.

LOC	DIST	REVISIONS				
P	LTR	DESCRIPTION	DATE	DWN	APVD	
A	66	SEE SHEET 1	-	-	-	

NOTE: PART NO. 240033-2 IS USED WHEN A STANDARD MODEL "C" OR "J" PRESS IS CONVERTED TO A 30° ROTATED STANDARD APPLICATOR.

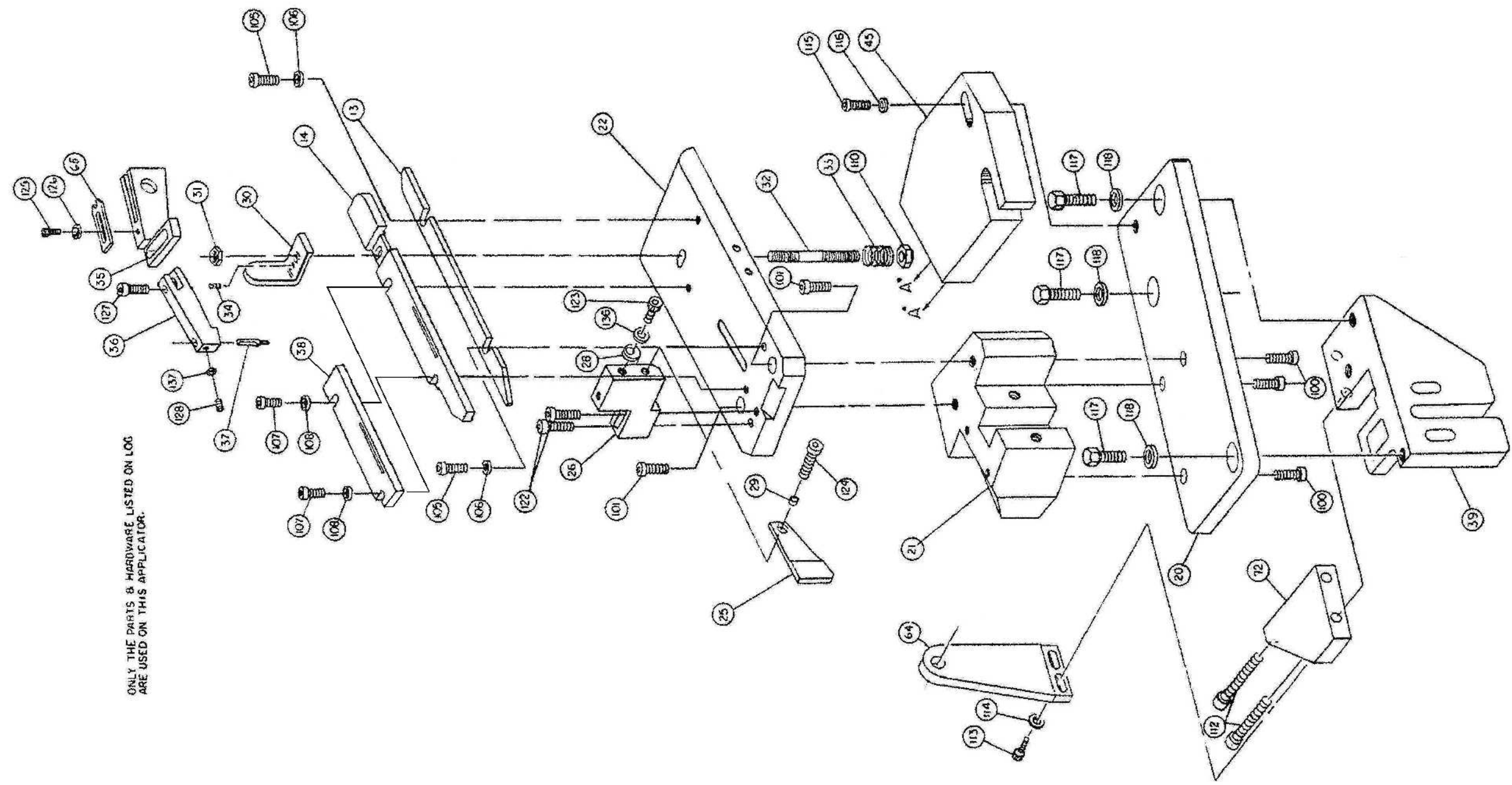


THIS DRAWING IS A CONTROLLED DOCUMENT.		DWN M. YOUNGER 25 JAN 05	Tyco Electronics Corporation Harrisburg, Pa 17105-3608	
DIMENSIONS: INCHES		CHK C. ERISMAN 27 JAN 2005	NAME	
TOLERANCES UNLESS OTHERWISE SPECIFIED:		APVD T. ELBIN 27 JAN 2005	PRODUCT SPEC	
0 PLC ± -		APPLICATION SPEC		
1 PLC ± -		WEIGHT		
2 PLC ± -		SIZE		
3 PLC ± -		CAGE CODE		
4 PLC ± -		DRAWING NO		
ANGLES ± -		RESTRICTED TO		
FINISH		SCALE		
MATERIAL		SHEET		
		OF		
		REV		
		A3		

566219-1

THIS DRAWING IS UNPUBLISHED. RELEASED FOR PUBLICATION
 © COPYRIGHT BY TYCO ELECTRONICS CORPORATION. ALL RIGHTS RESERVED.

LOC A	DIST 66	REVISIONS			
P	LTR	DESCRIPTION	DATE	DWN	APVD
-	-	SEE SHEET 1	-	-	-

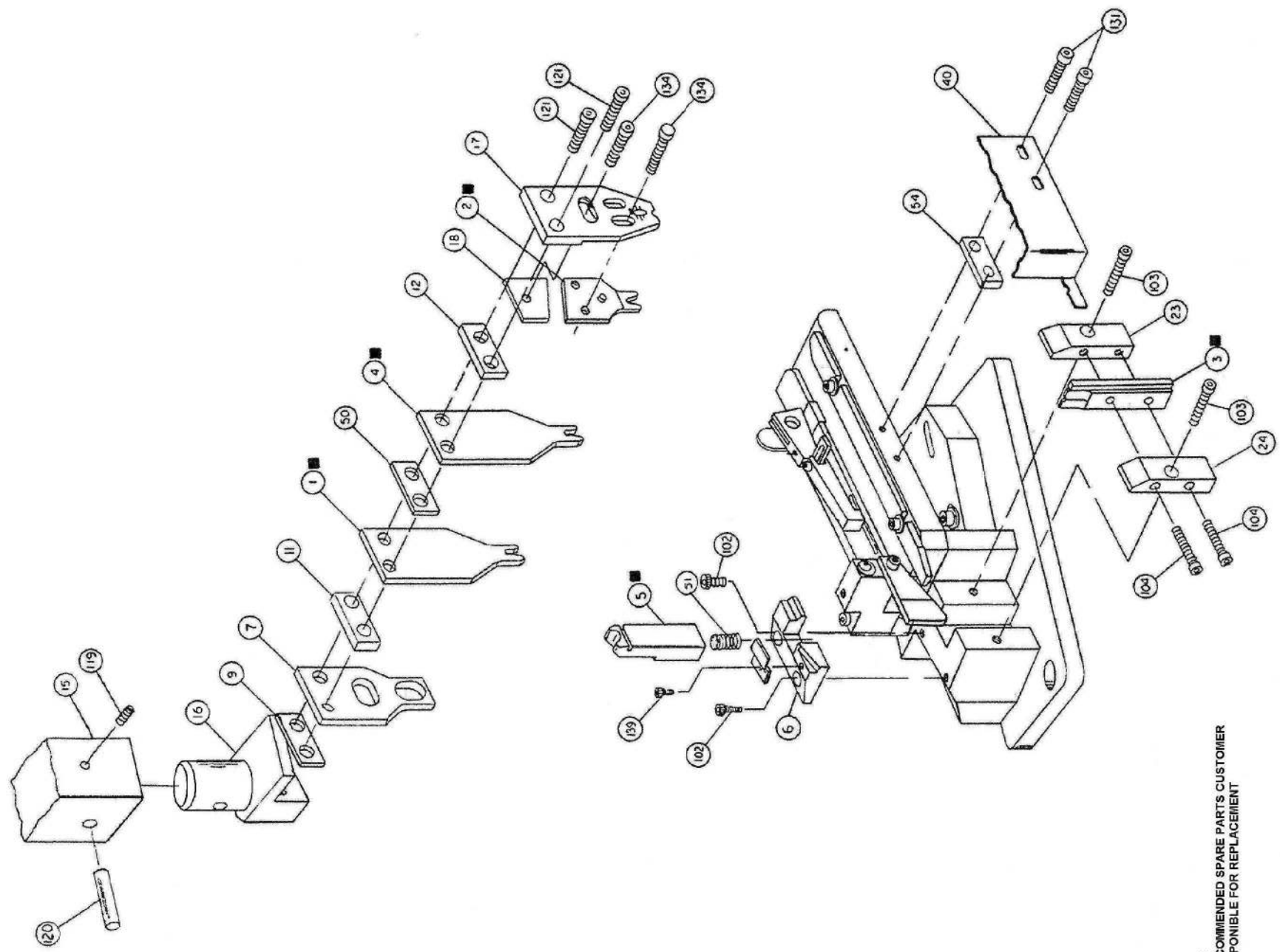


ONLY THE PARTS & HARDWARE LISTED ON LOG
 ARE USED ON THIS APPLICATOR.

THIS DRAWING IS A CONTROLLED DOCUMENT.		DWN M. YOUNGER 25 JAN 05	Tyco Electronics Corporation Harrisburg, Pa 17105-3608	
DIMENSIONS: INCHES		CHK C. ERISMAN 27 JAN 2005	APVD T. ELBIN 27 JAN 2005	
TOLERANCES UNLESS OTHERWISE SPECIFIED: 0 PLC ± - 1 PLC ± - 2 PLC ± - 3 PLC ± - 4 PLC ± - ANGLES ± - FINISH -		NAME T. ELBIN PRODUCT SPEC - APPLICATION SPEC - SIZE A2 CAGE CODE 00779 DRAWING NO C-566219-1 RESTRICTED TO -		
MATERIAL -		WEIGHT -		CUSTOMER DRAWING
		SCALE 1:1		SHEET 4 OF 5
				REV A3

THIS DRAWING IS UNPUBLISHED. RELEASED FOR PUBLICATION
 © COPYRIGHT BY TYCO ELECTRONICS CORPORATION. ALL RIGHTS RESERVED.

LOC	DIST	REVISIONS			
P	LTR	DESCRIPTION	DATE	DWN	APVD
A	66	SEE SHEET 1	-	-	-



KEY:
 ■ -RECOMMENDED SPARE PARTS CUSTOMER RESPONSIBLE FOR REPLACEMENT

THIS DRAWING IS A CONTROLLED DOCUMENT.		DWN M. YOUNGER 25JAN05	Tyco Electronics Corporation Harrisburg, Pa 17105-3608																												
DIMENSIONS: INCHES		CHK C. ERISMAN 27JAN2005	NAME																												
TOLERANCES UNLESS OTHERWISE SPECIFIED:		APVD T. ELBIN 27JAN2005	PRODUCT SPEC																												
<table border="0"> <tr><td>0</td><td>PLC</td><td>±</td><td>-</td></tr> <tr><td>1</td><td>PLC</td><td>±</td><td>-</td></tr> <tr><td>2</td><td>PLC</td><td>±</td><td>-</td></tr> <tr><td>3</td><td>PLC</td><td>±</td><td>-</td></tr> <tr><td>4</td><td>PLC</td><td>±</td><td>-</td></tr> <tr><td></td><td>ANGLES</td><td>±</td><td>-</td></tr> <tr><td></td><td>FINISH</td><td>-</td><td>-</td></tr> </table>		0	PLC	±	-	1	PLC	±	-	2	PLC	±	-	3	PLC	±	-	4	PLC	±	-		ANGLES	±	-		FINISH	-	-	APPLICATION SPEC	
0	PLC	±	-																												
1	PLC	±	-																												
2	PLC	±	-																												
3	PLC	±	-																												
4	PLC	±	-																												
	ANGLES	±	-																												
	FINISH	-	-																												
MATERIAL		WEIGHT	SIZE A2	CAGE CODE 00779																											
			DRAWING NO C-566219-1																												
		CUSTOMER DRAWING		RESTRICTED TO																											
		SCALE 1:1	SHEET 5	OF 5																											
			REV A3																												

566219-1