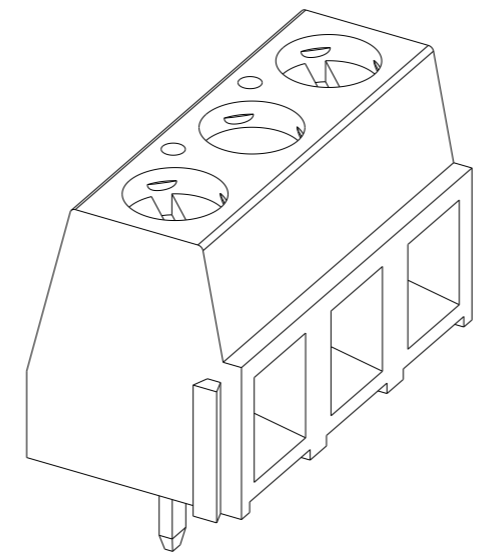
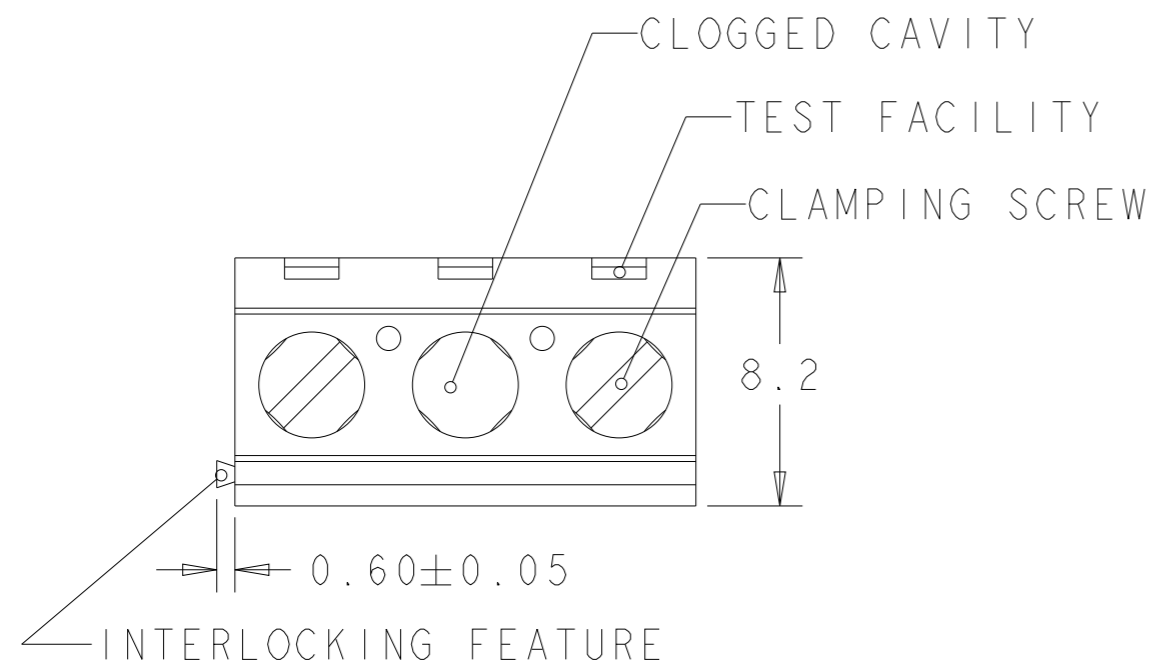
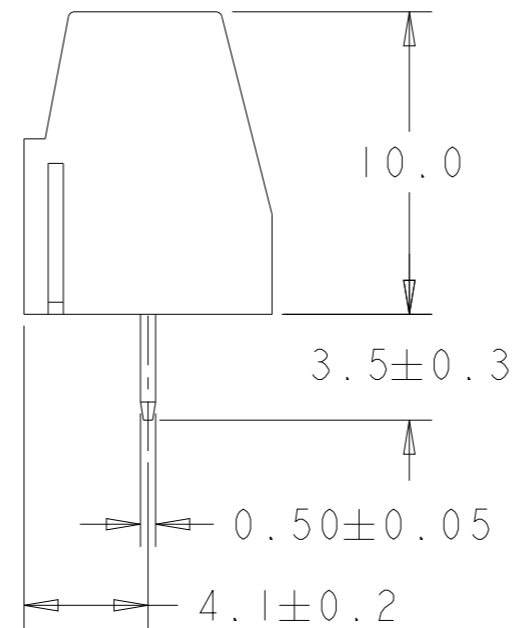
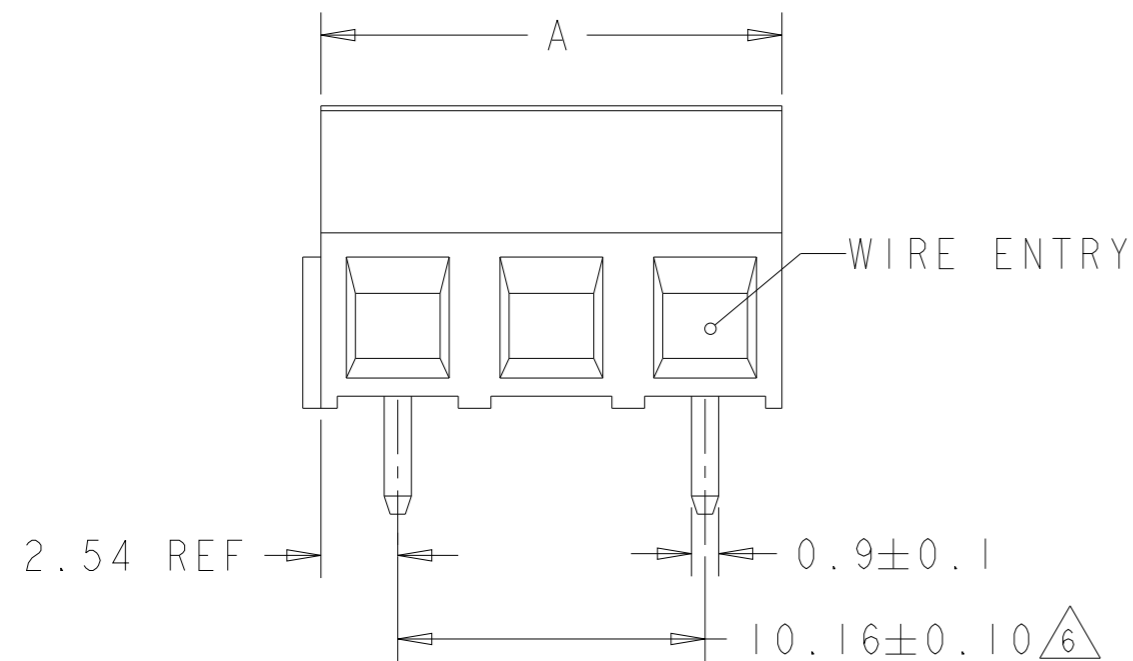


P	LTR	DESCRIPTION	DATE	DWN	APVD
	E	PACKAGING CHANGED FROM BLACK POLYURETHANE SPONGE TO TRAY	27MAR2018	RK	PS
	E1	PART STATUS UPDATED	20OCT2021	SCB	SS

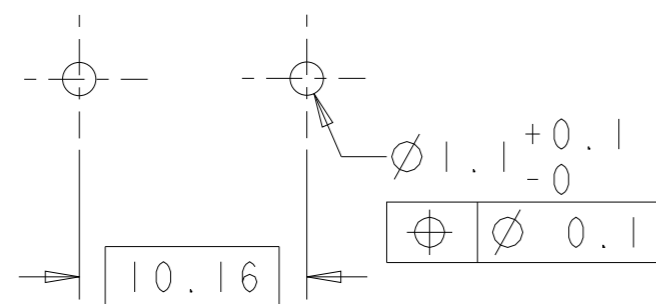


282836-2 AS SHOWN



OBSOLETE	127.00	13	<del>1-282839-3</del>
	116.84	12	<del>1-282839-2</del>
	106.68	11	<del>1-282839-1</del>
	96.52	10	<del>1-282839-0</del>
	86.36	9	<del>282839-9</del>
	76.20	8	<del>282839-8</del>
	66.04	7	<del>282839-7</del>
	55.88	6	<del>282839-6</del>
	45.72	5	<del>282839-5</del>
	35.56	4	<del>282839-4</del>
25.40	3	<del>282839-3</del>	
15.24	2	<del>282839-2</del>	
<b>DIM. A</b>		<b>NO OF POS.</b>	<b>PART NUMBER</b>

RECOMMENDED PC BOARD LAYOUT





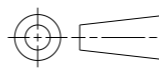
THIS DRAWING IS A CONTROLLED DOCUMENT.		DWN 04SEP2001 E. ZANOLINI	<b>STE</b> TE Connectivity				
DIMENSIONS: mm		CHK 04SEP2001 D. BIEVENOUR					
TOLERANCES UNLESS OTHERWISE SPECIFIED:		APVD 04SEP2001 D. BIEVENOUR	NAME TERMINAL BLOCK PCB MOUNT SIDE ENTRY WIRE 10.16mm PITCH				
<ul style="list-style-type: none"> <li>0 PLC ±-</li> <li>1 PLC ±.3</li> <li>2 PLC ±.25</li> <li>3 PLC ±-</li> <li>4 PLC ±-</li> <li>ANGLES ±2</li> </ul>		PRODUCT SPEC 108-20166					
MATERIAL SEE NOTES		FINISH SEE NOTES	APPLICATION SPEC 114-20079	SIZE A3	CAGE CODE 00779	DRAWING NO C-282839	RESTRICTED TO -
CUSTOMER DRAWING			SCALE 4:1	SHEET 1 OF 2	REV E1		

REVISIONS

P	LTR	DESCRIPTION	DATE	DWN	APVD
	-	SEE SHEET 1	-	-	-

NOTES:

- MATERIALS AND FINISH  
HOUSING: PA 6-6, UL 94-V0, COLOR GREEN.  
CLAMP: BRASS, NICKEL PLATED.  
TERMINAL: BRASS, TIN PLATED.  
CLAMPING SCREW: M3, BRASS, NICKEL PLATED.
- MECHANICAL  
WIRE STRIPPING LENGTH : 5.0-6.0 mm  
MIN. PC BOARD HOLES DIAMETER : 1.1 mm  
MAX. PC BOARD THICKNESS : 2.4 mm  
RECOMMENDED TIGHTENING TORQUE FOR SCREW : 0.5 Nm.
- ELECTRICAL  
WIRE RANGE : 16-30 AWG  
MAX. VOLTAGE : 600 V  
MAX CURRENT : 13.5 A  
CONTACT RESISTANCE : <15 m Ohm  
INSULATION RESISTANCE : >1000 M Ohm (500V DC)
- RECOGNIZED UNDER THE COMPONENT PROGRAM OF UNDERWRITERS LABORATORIES INC., FILE NO E60677.
- OPERATING TEMPERATURE RANGE: -40°C TO +110°C
-  NOT CUMULATIVE TOLERANCE.
- PACKED IN TRAY.

THIS DRAWING IS A CONTROLLED DOCUMENT.		DWN E. ZANOLINI	04SEP2001	 <b>TE Connectivity</b> NAME TERMINAL BLOCK PCB MOUNT SIDE ENTRY WIRE 10.16mm PITCH			
DIMENSIONS: mm		CHK D. BIEVENOUR	04SEP2001				
TOLERANCES UNLESS OTHERWISE SPECIFIED:		APVD D. BIEVENOUR	04SEP2001				
 0 PLC ± 1 PLC ±.3 2 PLC ±.25 3 PLC ± 4 PLC ± ANGLES ±2		PRODUCT SPEC 108-20166					
MATERIAL SEE NOTES		FINISH SEE NOTES	APPLICATION SPEC 114-20079	SIZE A3	CAGE CODE 00779	DRAWING NO C-282839	RESTRICTED TO -
CUSTOMER DRAWING				SCALE 4:1	SHEET 2 OF 2	REV E1	