

TABLE OF CONTENTS	
SHEET NO.	SHEET DESCRIPTION
1	NOTES
2	CONFIGURATIONS
3	BOM AND OUTER DIMENSIONS
4	INTERFACE

NOTES: VALID UNLESS OTHERWISE SPECIFIED

1. GENERAL:

a. APPLICATION SPECIFICATION SEE: 1480327001

- CONTAINS: PRODUCT INTRODUCTION, PRODUCT SUMMARY, CONNECTOR ASSEMBLY, PACKAGING INFORMATION, CONNECTOR MATING, SERVICE INSTRUCTIONS, ELECTRICAL CONTINUITY CHECKING, CRIMPING, AND TROUBLESHOOTING.
- DESIGNED TO MATE WITH DEVICE CONNECTOR AS SPECIFIED IN THE MATING INTERFACE/CONNECTOR DRAWINGS CHART.
- ASSEMBLY SHIPPED WITH PLR IN PRE-LOCK POSITION
- FOR 1.5MM RECEPTACLE TERMINAL TO BE USED WITH THIS ASSEMBLY SEE MOLEX DRAWING RSD-33012-002 AND YAZAKI DRAWING 7116-4100-02:R.
- ASSEMBLY CONFORM TO GMW3191 2012 WITH THE FOLLOWING EXCEPTION: CONNECTOR LOCK MECHANICAL OVERSTRESS VERTICAL DIRECTION:80N MIN.

b. PRODUCT SPECIFICATION SEE:1480327002

- CONTAINS:SCOPE, PRODUCT DESCRIPTION, INTEGRAL COMPONENTS AND ACCESSORIES, APPLICABLE DOCUMENTS AND SPECIFICATIONS, RATINGS, PERFORMANCE, PACKAGING, GAUGE AND FIXTURES, AND OTHER INFORMATION.

c. PACKAGING SPECIFICATION PER MOLEX DRAWING: PK148032-001

d. PARTS MUST BE IN COMPLIANCE TO MOLEX CHEMICAL SUBSTANCES FOR PRODUCTS AND PACKAGING SPECIFICATION: QEHS-699000-301

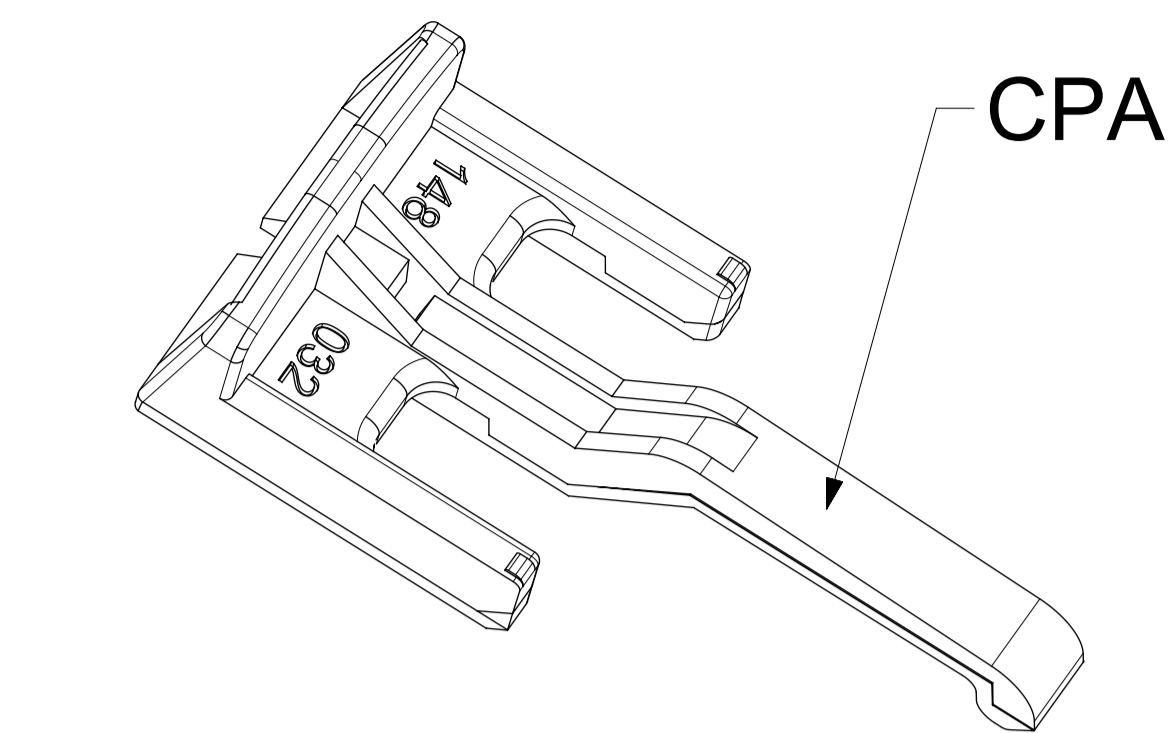
e. DATA MUST BE SUBMITTED UNDER THE MOLEX PART NUMBER TO IMDS (COMPANY ID#13255)

2. DESIGN - MATERIALS:

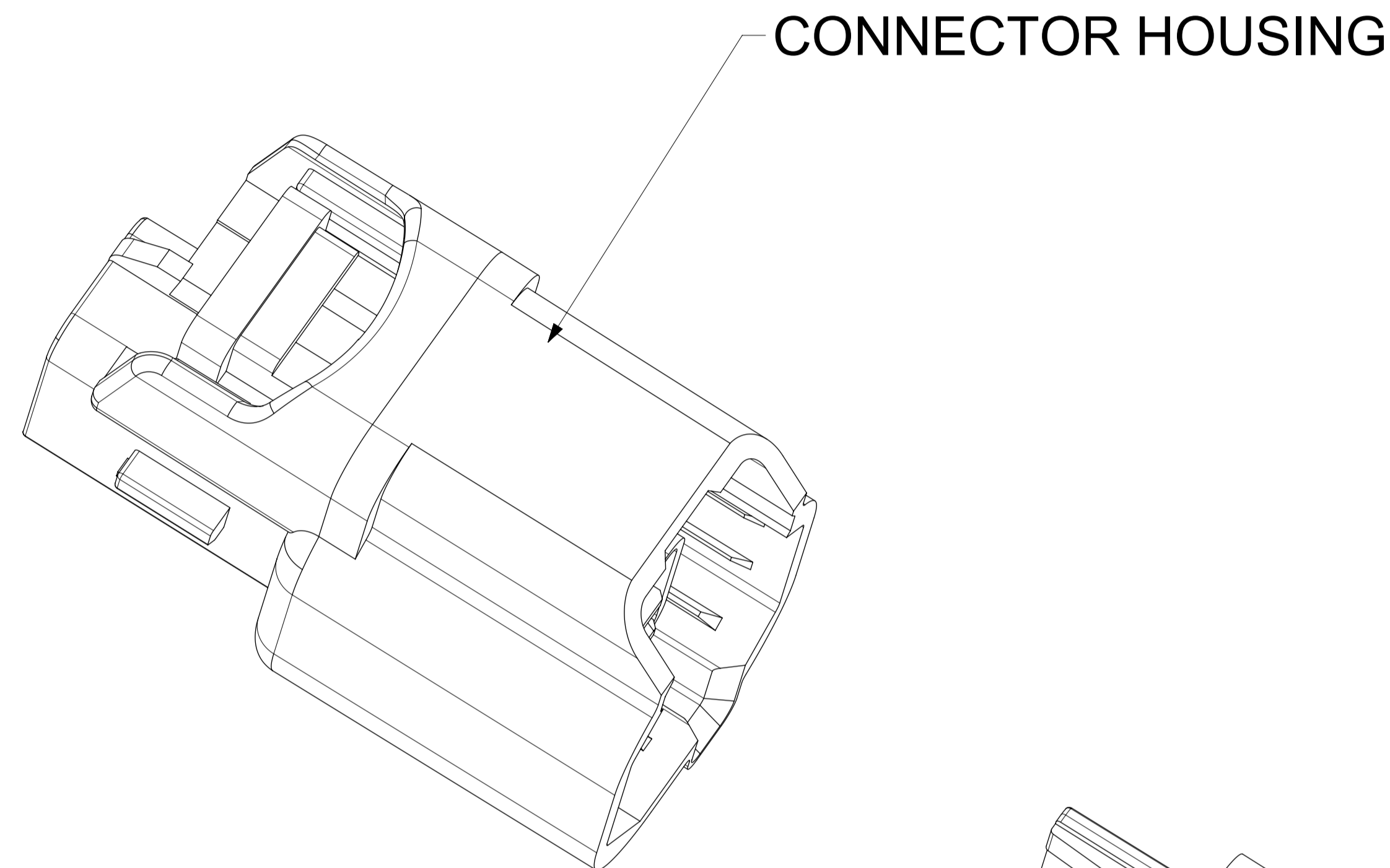
a. FOR BILL OF MATERIALS SEE BOM TABLE

3. DESIGN - GEOMETRY:

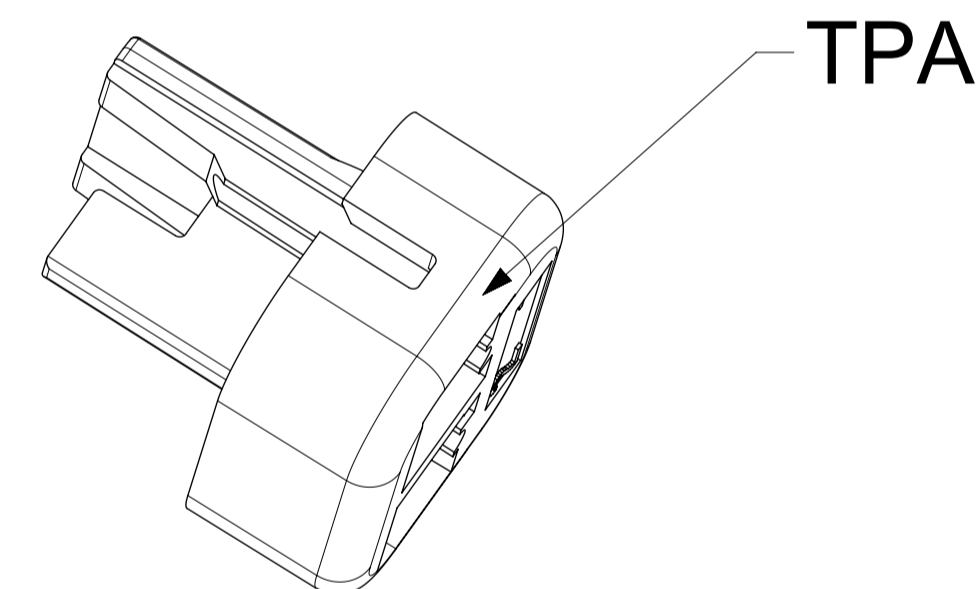
- a. THE 3-D CAD DATA IS BASIC (WITHOUT TOLERANCE) AND MASTER FOR THIS PART WITH THE EXCEPTION OF UNDERLINED DIMENSIONS. DIMENSIONAL INFORMATION NOT SHOWN ON THIS DRAWING IS DEFINED BY THE DATA FILE AT ITS LATEST REVISION.
- b. GEOMETRIC DIMENSIONS AND TOLERANCES PER ASME Y14.5M-2009
- c. EDGES AND UNDIMENSIONED DETAILS PER ISO13715
- d. CORNERS SHOWN AS SHARP TO BE R 0.2 MAX.
- e. LETTERING SHALL BE 0.15 MAX RAISED IN 0.25 MAX RECESS PAD. THIS INCLUDES RECYCLING CODE, CAVITY ID, VENDOR IDENTIFICATION, AND CUSTOMER MATERIAL NUMBER.
- f. VISUAL DEFECTS SHALL MEET COSMETIC STANDARD PS-45499-002 (Class B).
- g. LASER MARKING:
 1. PART NUMBER
 2. DAY OF THE YEAR
 3. SHIFT
 4. YEAR



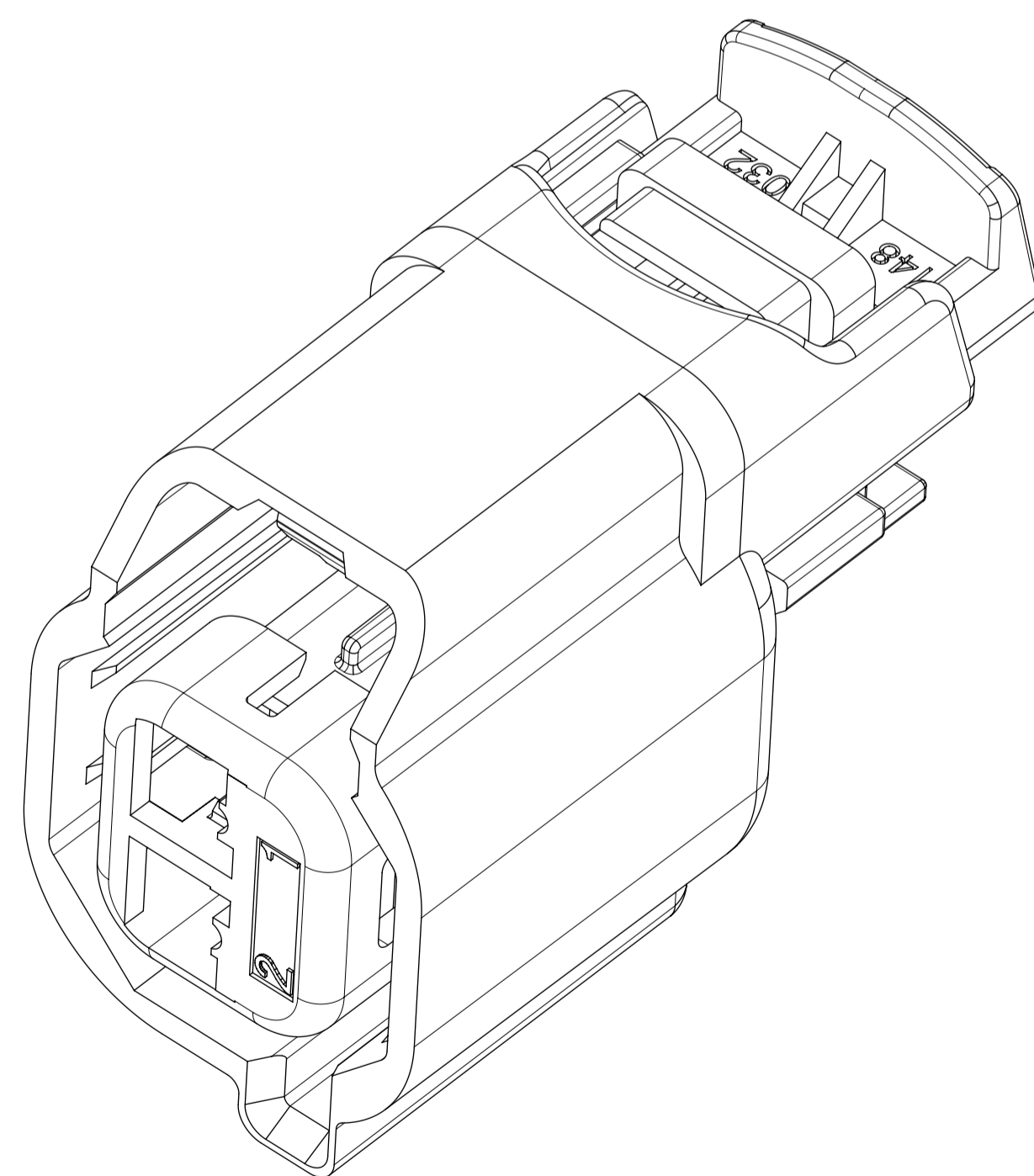
CPA



CONNECTOR HOUSING

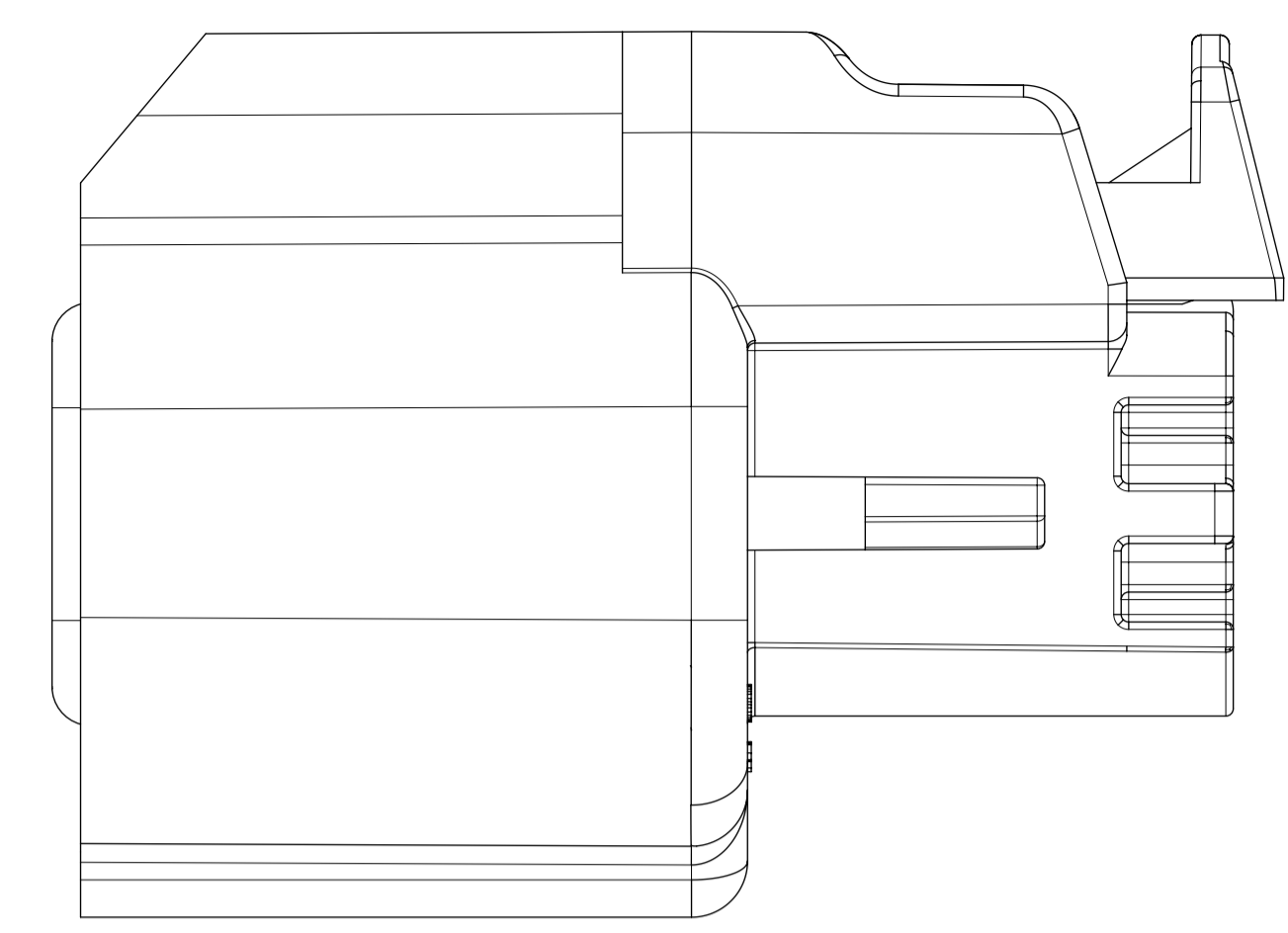
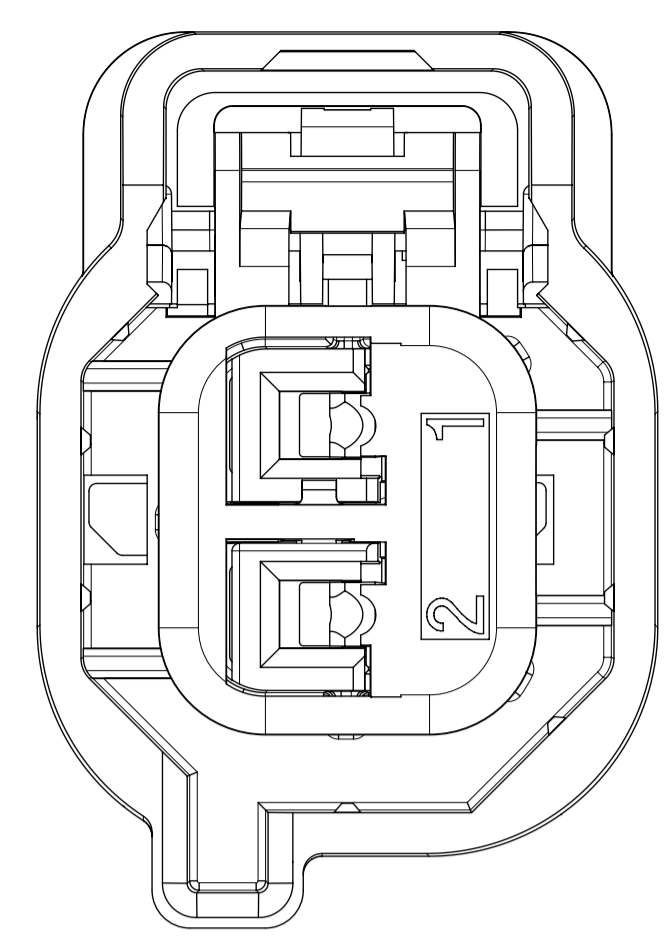
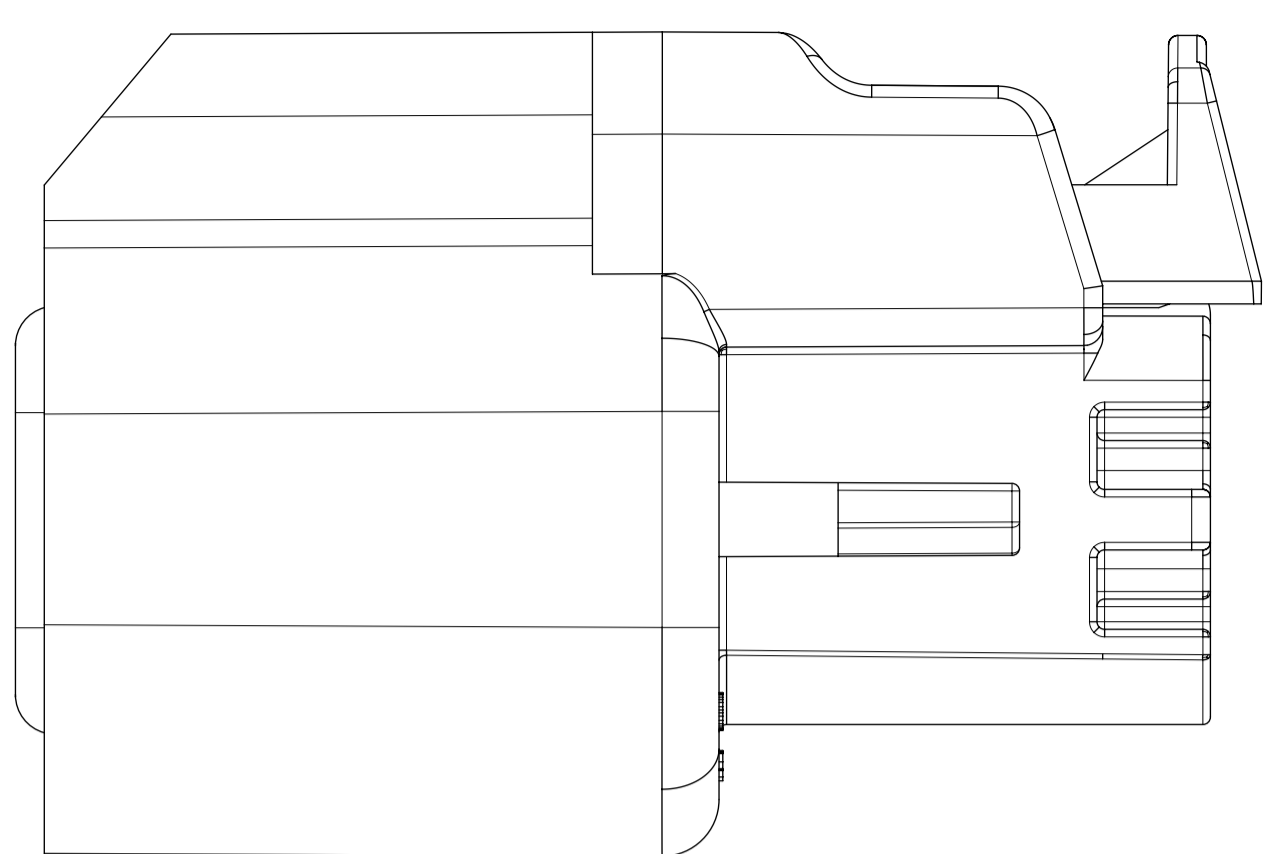
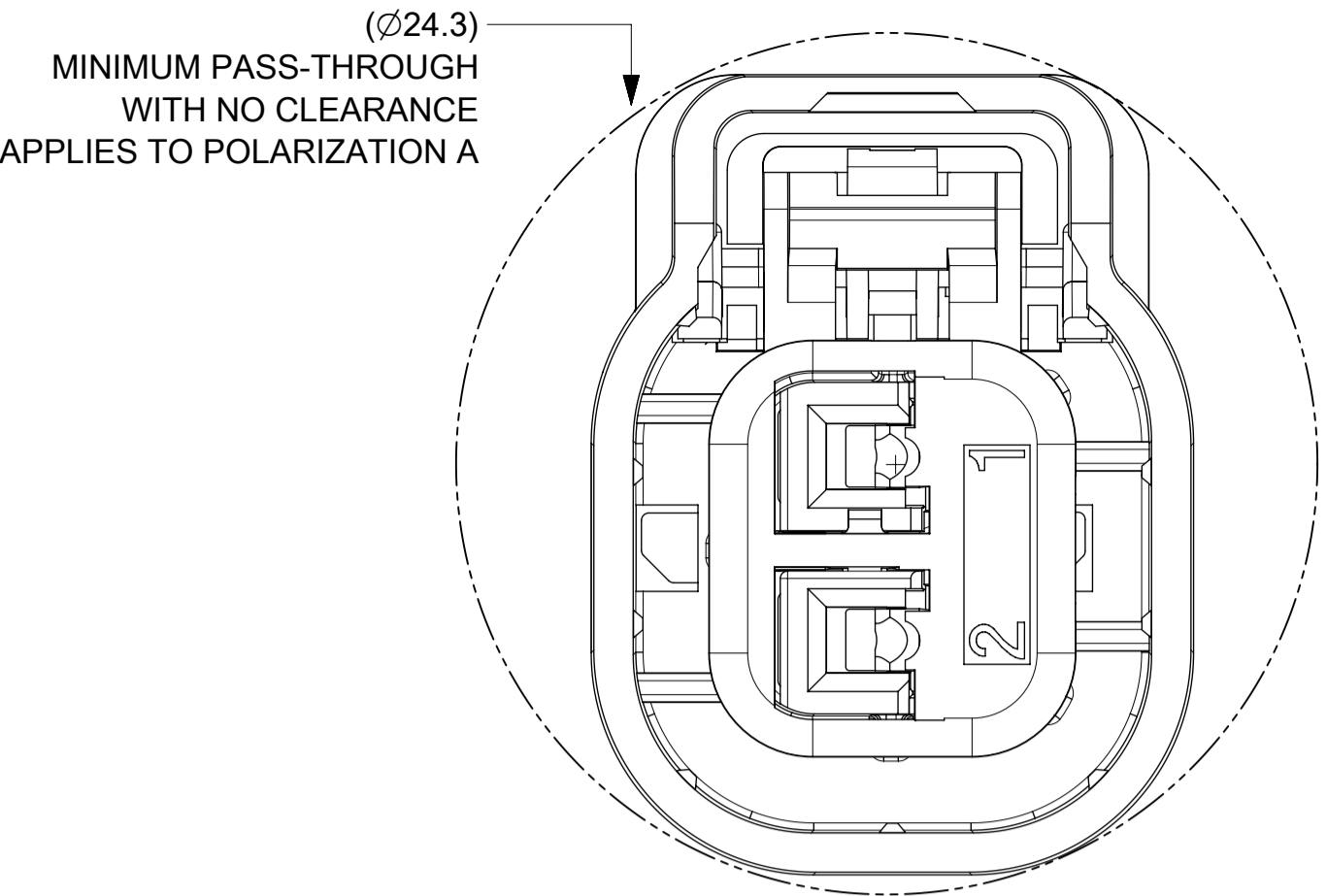


TPA



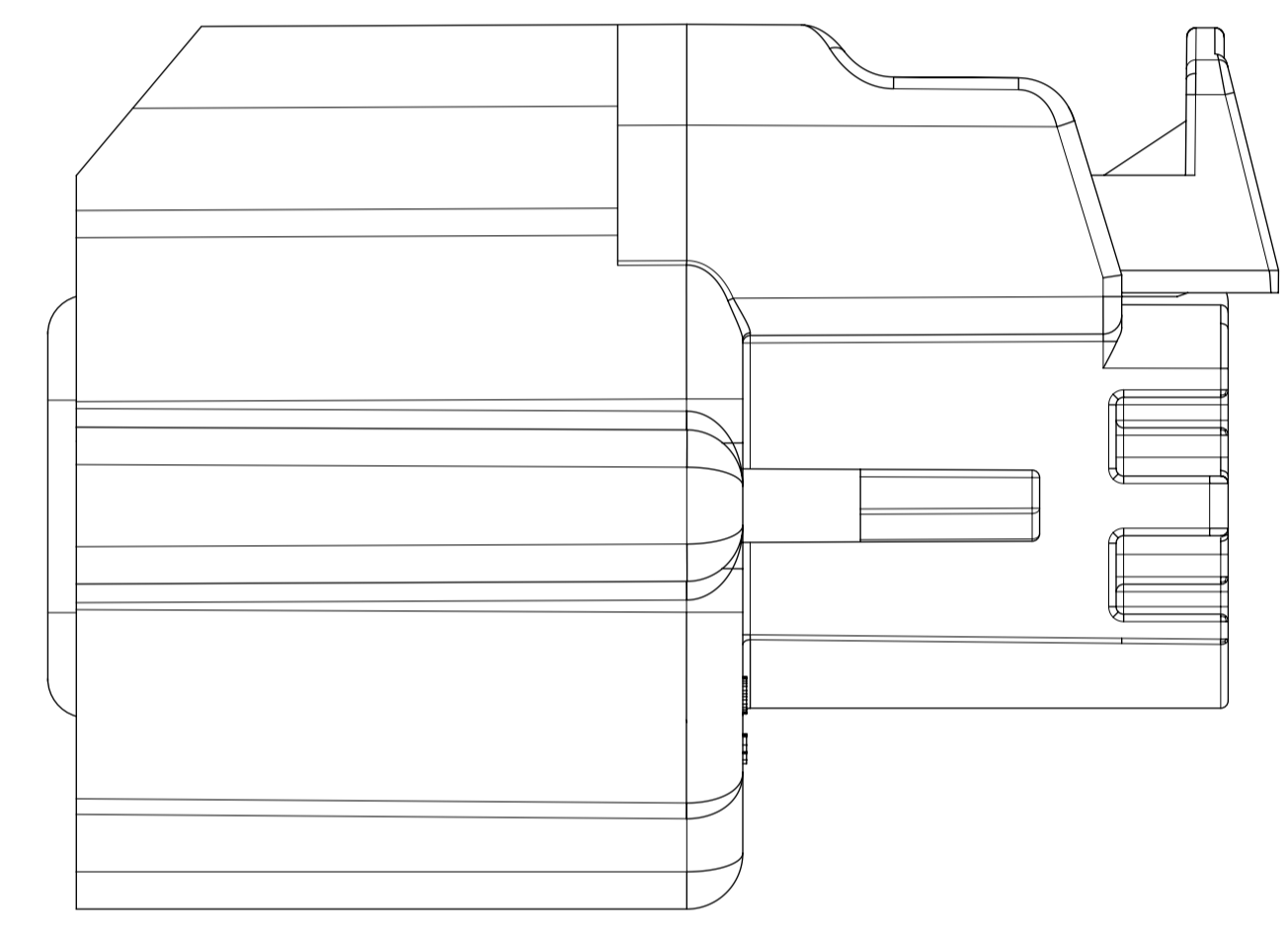
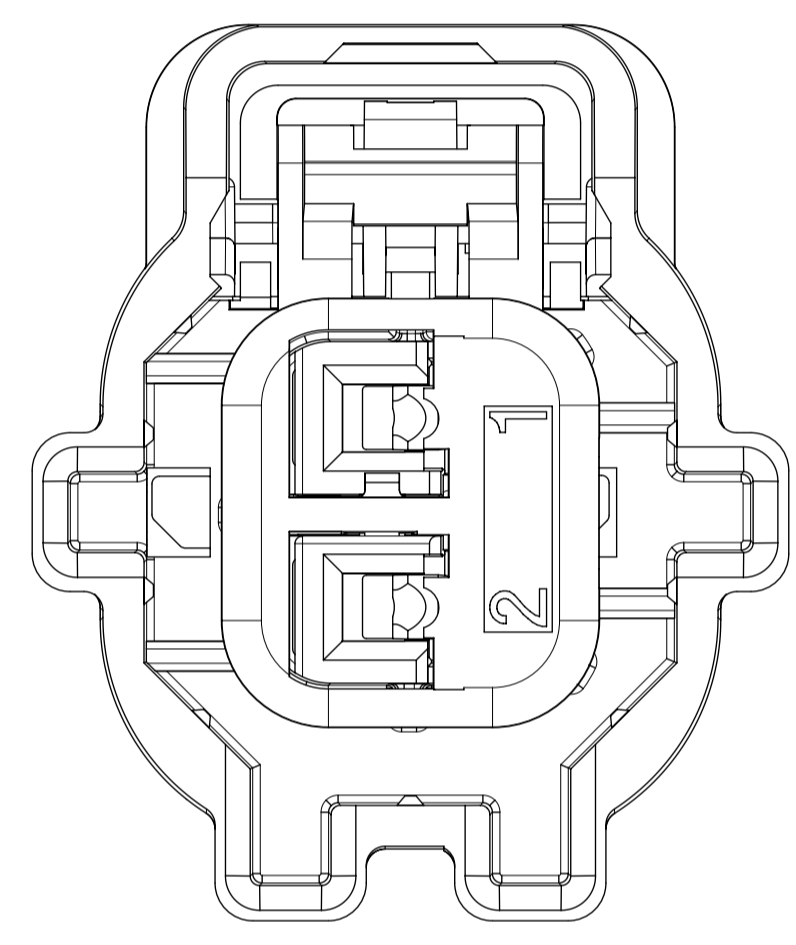
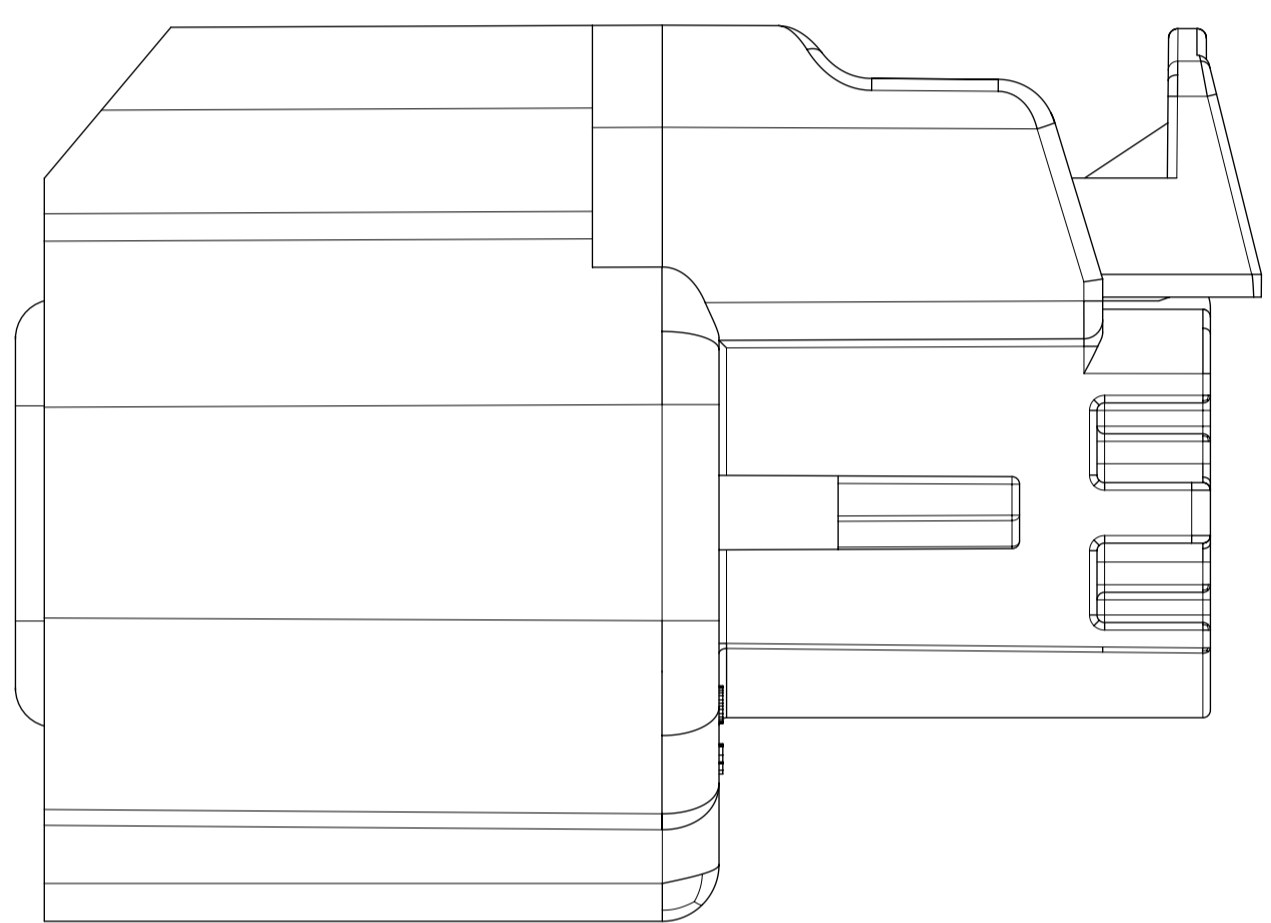
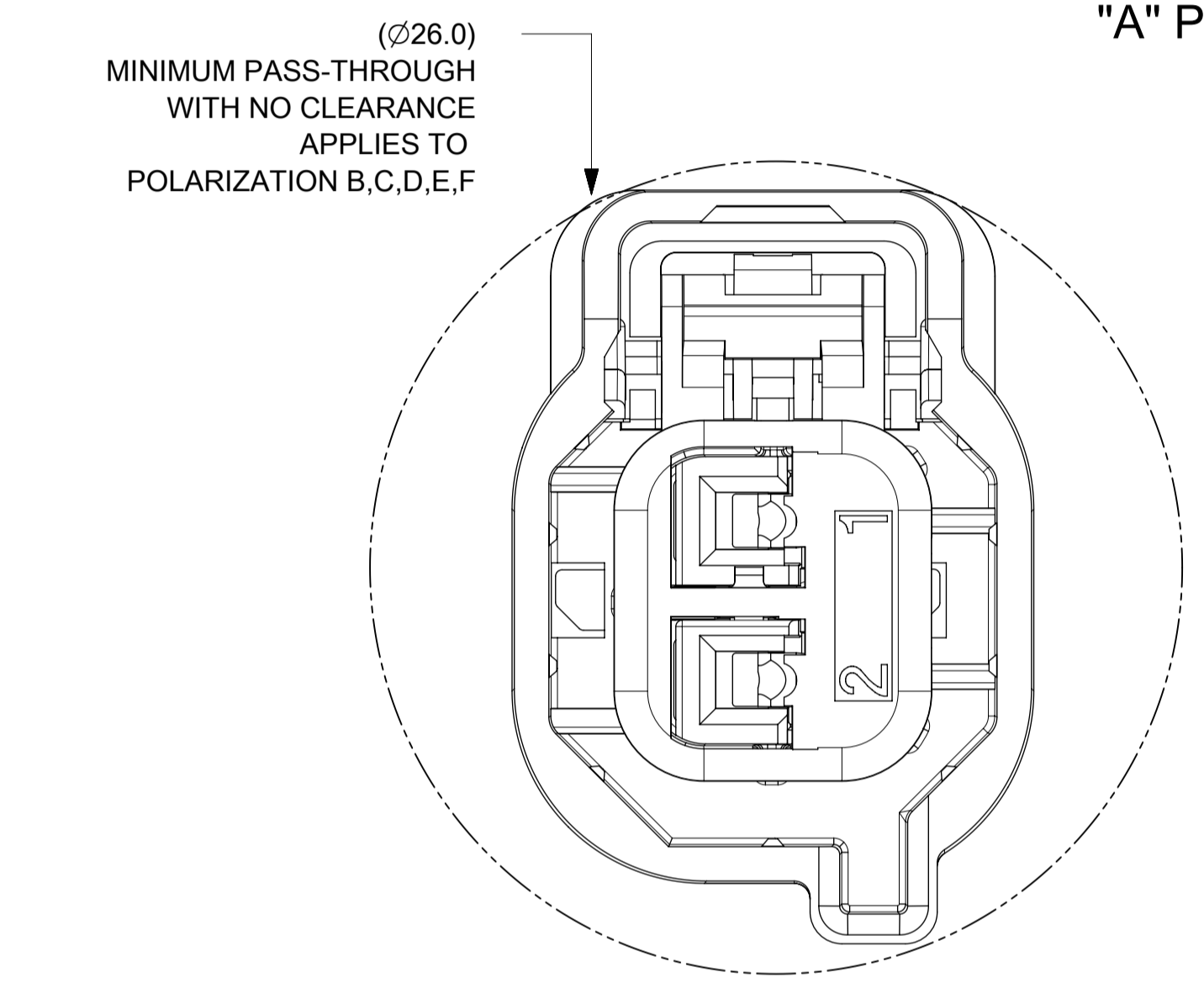
THIS DRAWING CONTAINS INFORMATION THAT IS PROPRIETARY TO MOLEX ELECTRONIC TECHNOLOGIES, LLC AND SHOULD NOT BE USED WITHOUT WRITTEN PERMISSION												
QUALITY SYMBOLS FA = 0 FE = 0 FE = 0 ▼ = 0 C = 0 ☒ = 0 ■ = 0 ∇ = 0	EC NO: 110742 DRWN: XBTANG CHKD: JDENG02 APPR: JDENG02	2016/11/23 2016/12/21	GENERAL TOLERANCES (UNLESS SPECIFIED)		DIMENSION UNITS	SCALE	 GM2W UNSEAL SPEAKER ASSEMBLY SALES DRAWING CUSTOMER DRAWING					
			ANGULAR TOL ± 3.0 °		MM	5:1						
			4 PLACES ±	XBTANG		DATE						2016/08/22
			3 PLACES ±	XBTANG		CHK'D BY						DATE
			2 PLACES ± 0.1	XBTANG		DATE						2016/09/20
			1 PLACE ± 0.3	JDENG02		DATE						2016/09/26
DRAFT WHERE APPLICABLE MUST REMAIN WITHIN DIMENSIONS		DRAWING SIZE	THIRD ANGLE PROJECTION	A1			SERIES	MATERIAL NUMBER	CUSTOMER			
A1		148032		SEE BOM		GENERAL MARKET			DOCUMENT NUMBER			
1480324100		CD		000		1 OF 4						

CONFIGURATIONS



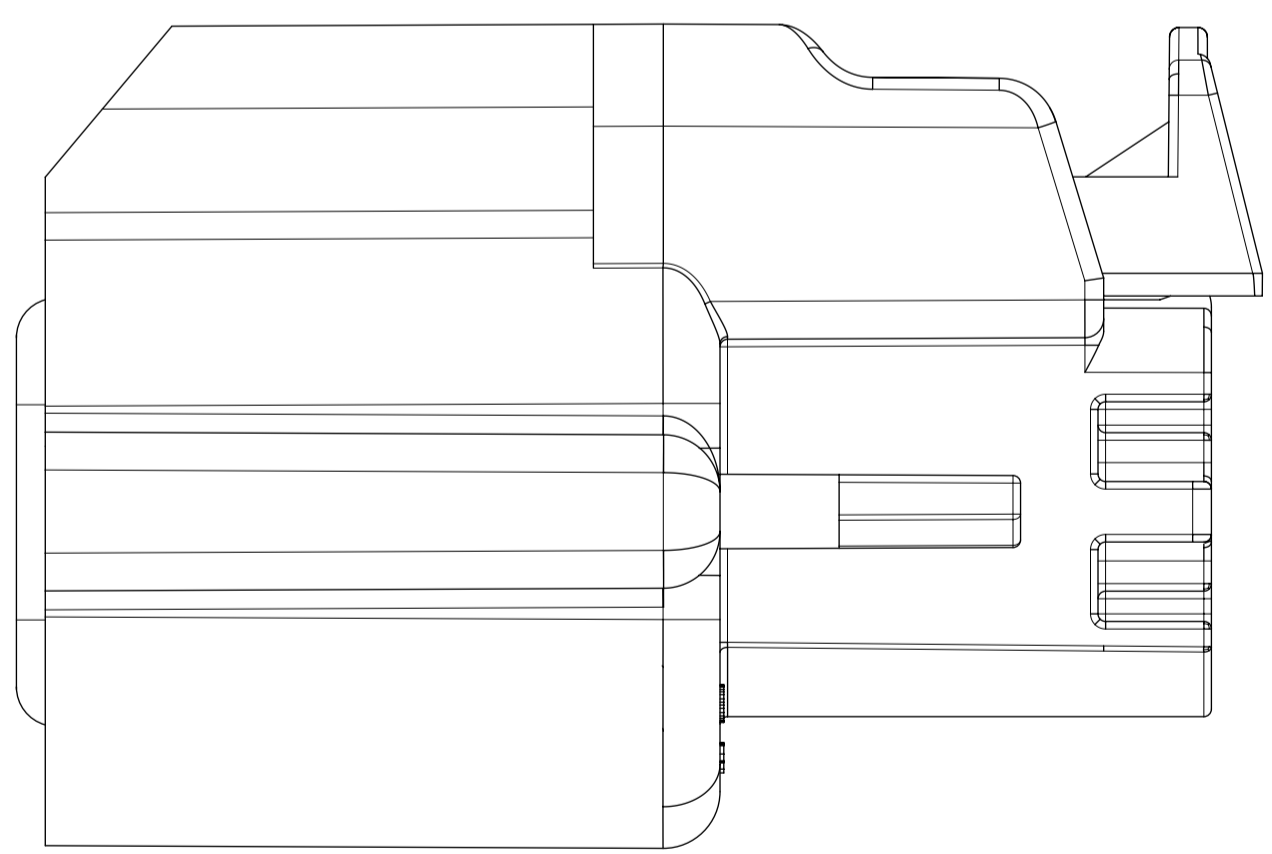
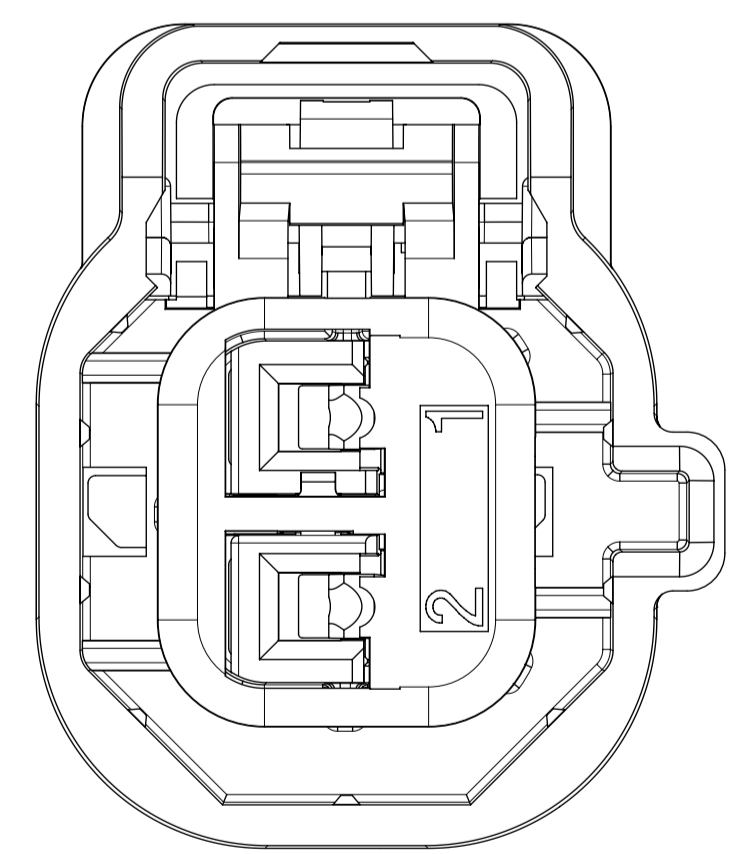
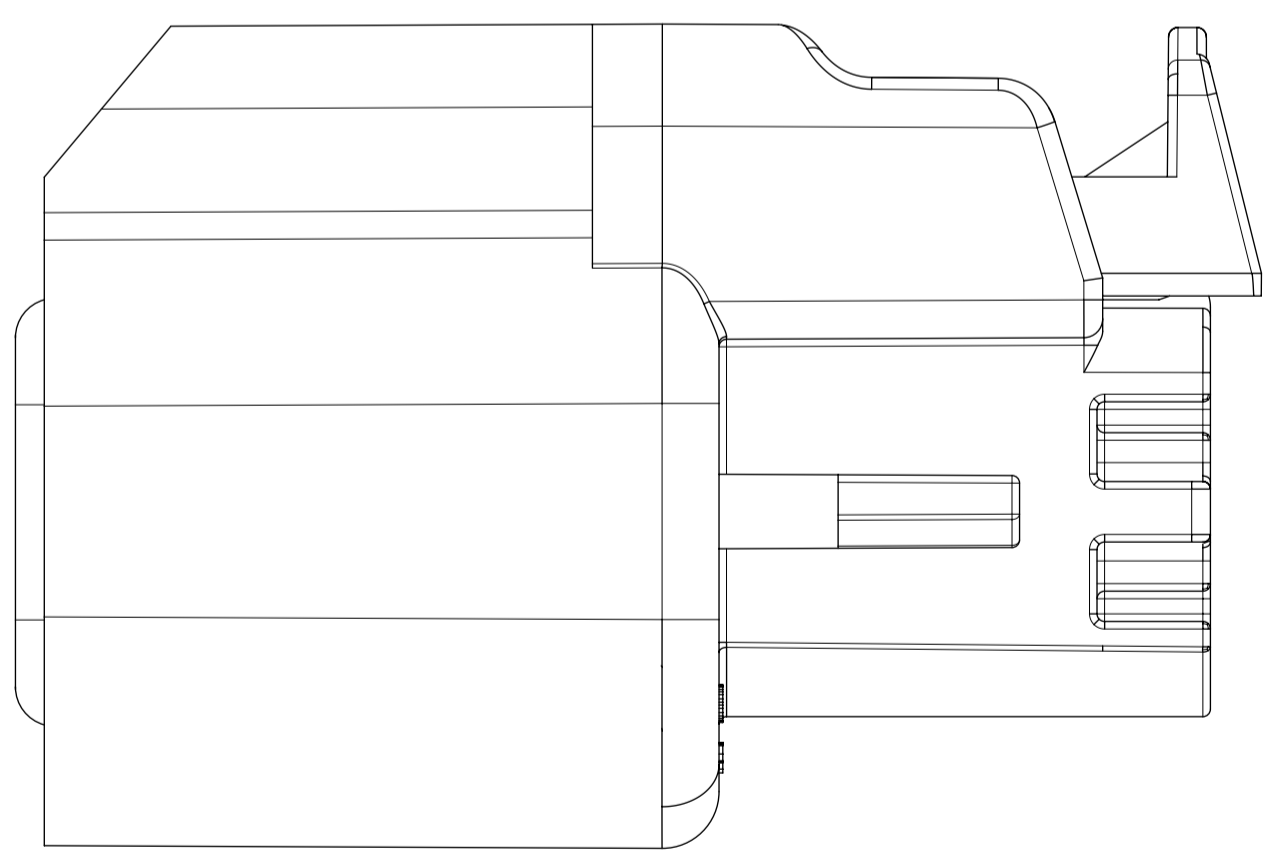
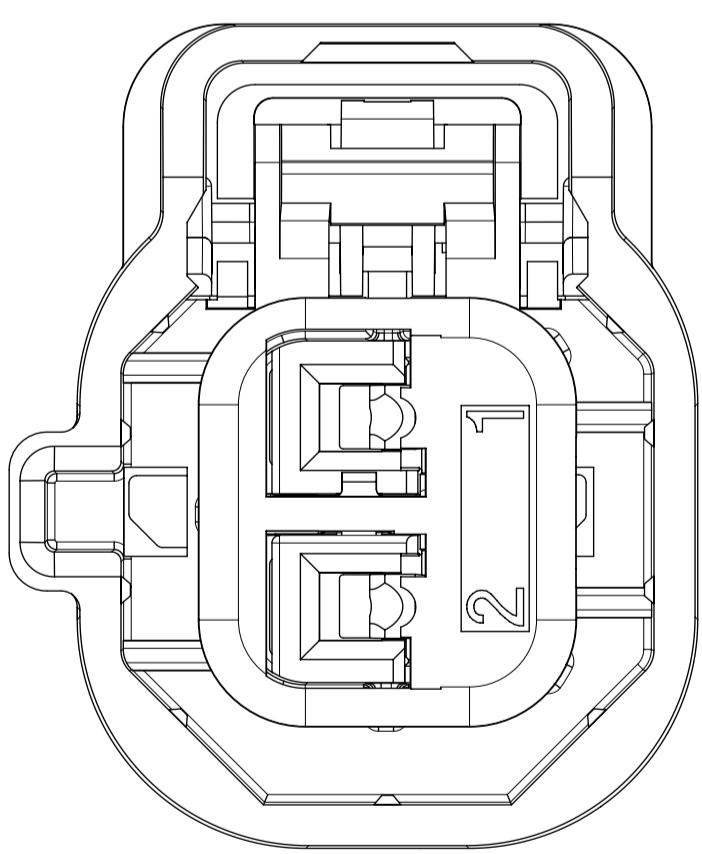
"A" POLARIZATION

"D" POLARIZATION



"B" POLARIZATION

"E" POLARIZATION

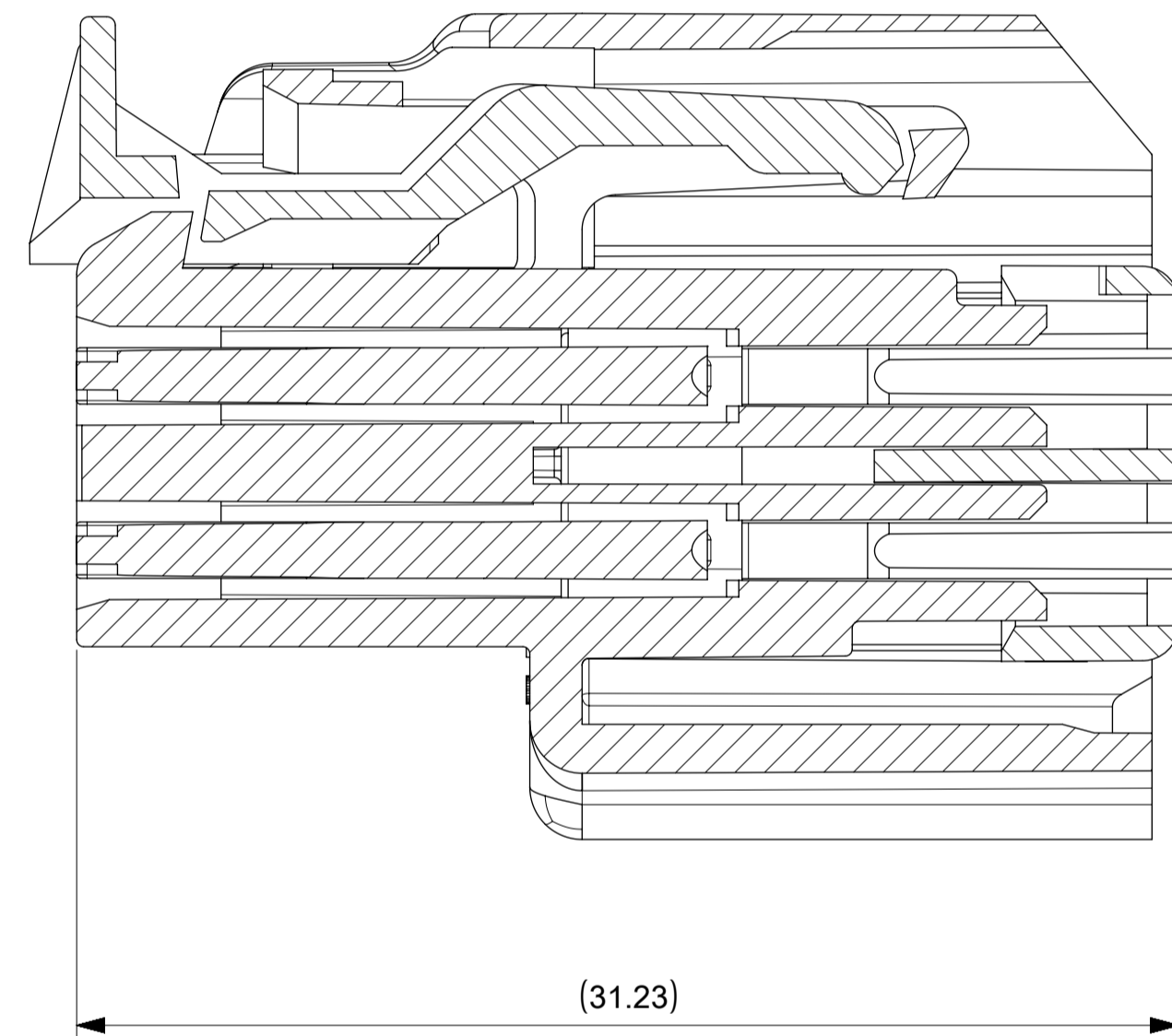
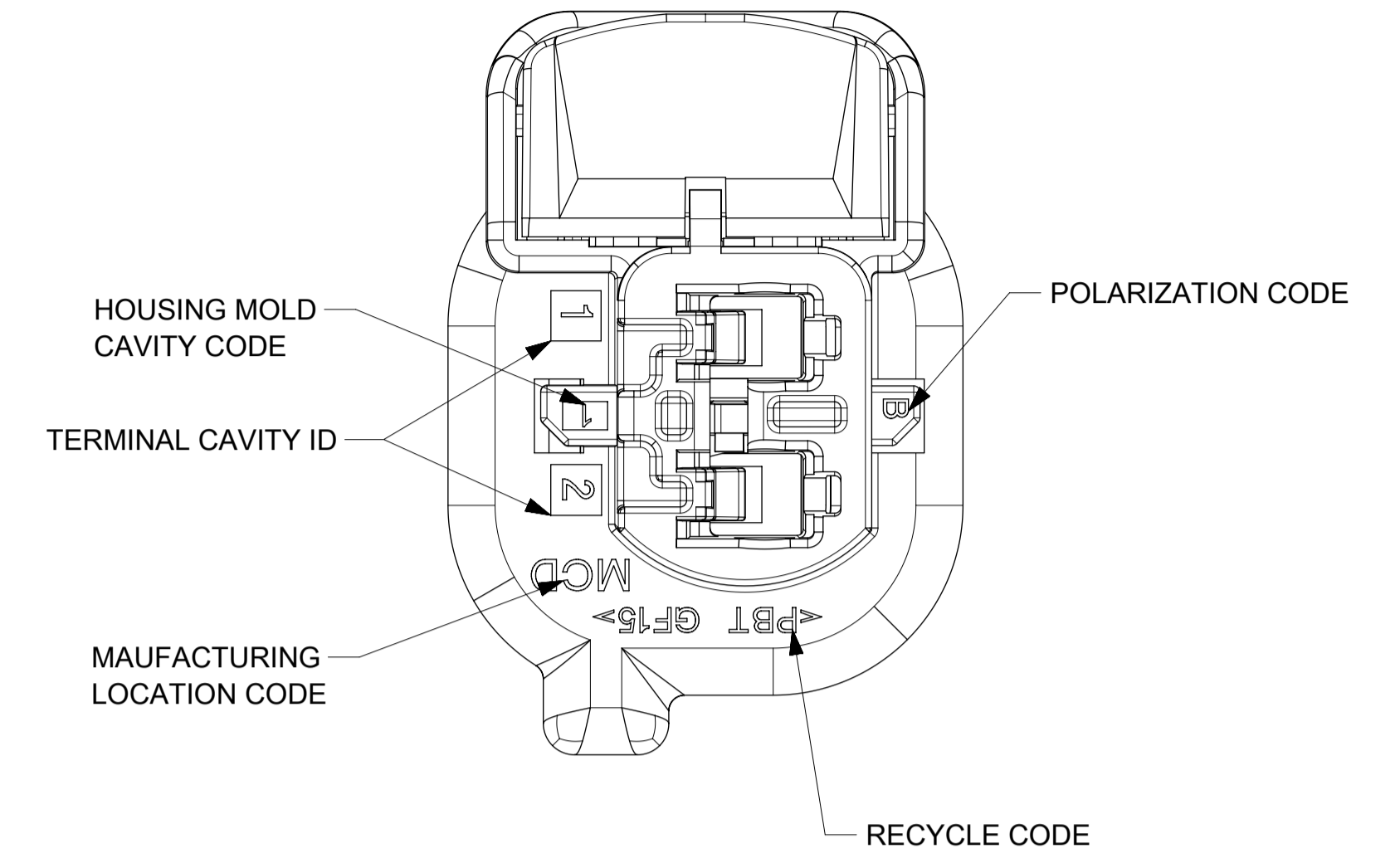
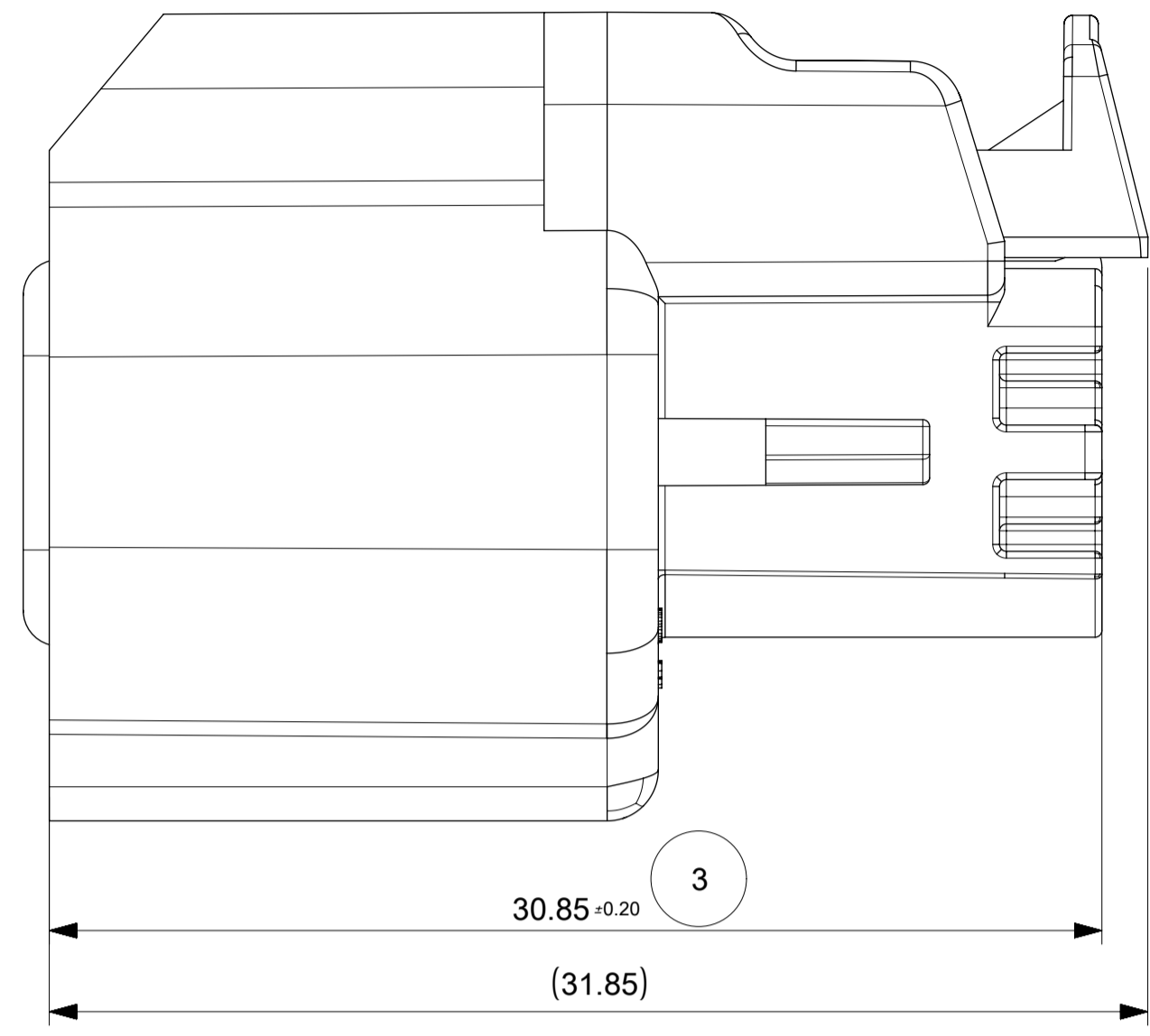
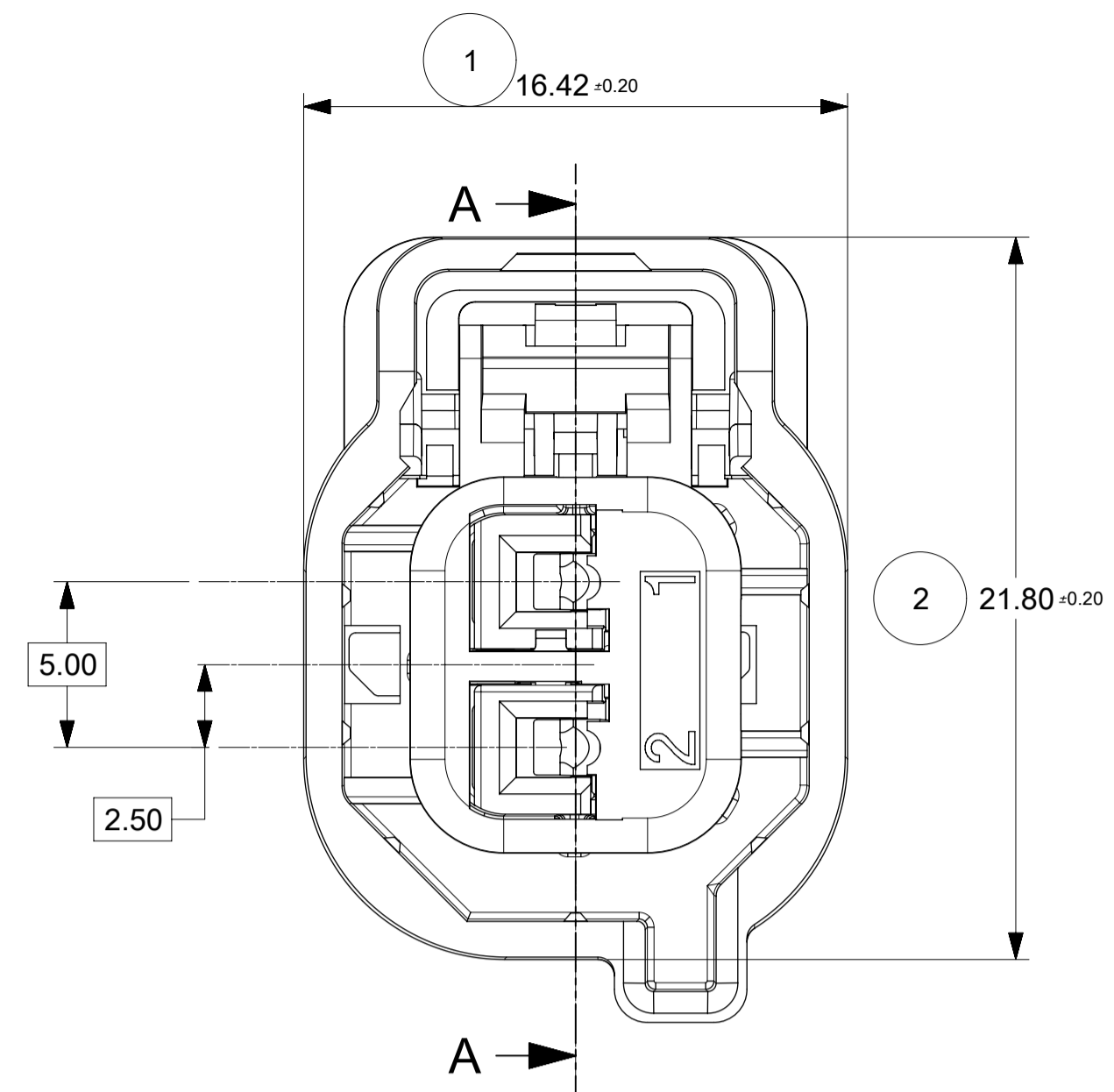
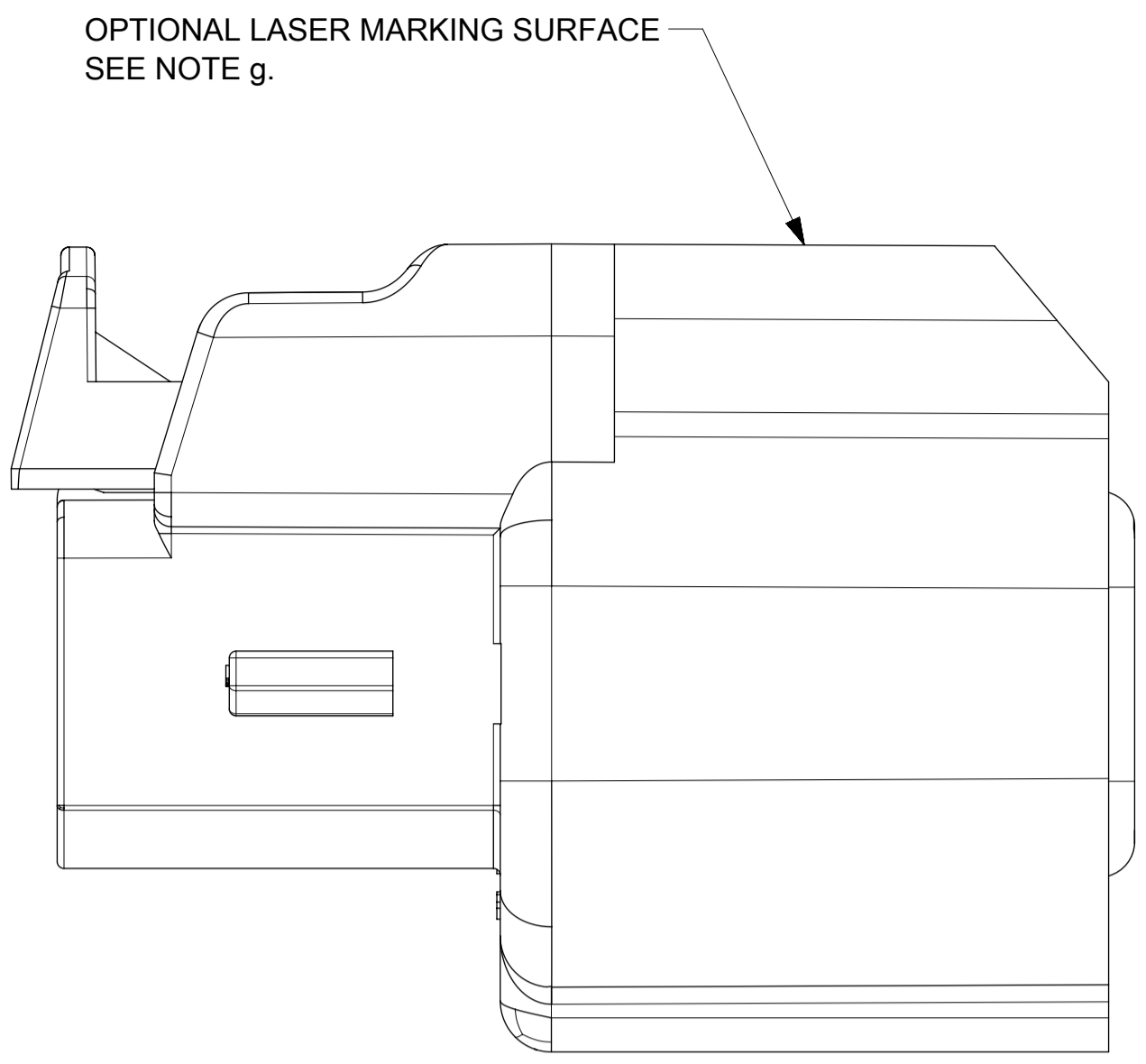


"C" POLARIZATION

"F" POLARIZATION

QUALITY SYMBOLS □ = 0 ▽ = 0 ▽ = 0 ▽ = 0 ▽ = 0 ▽ = 0 ▽ = 0 ▽ = 0 ▽ = 0 ▽ = 0		THIS DRAWING CONTAINS INFORMATION THAT IS PROPRIETARY TO MOLEX ELECTRONIC TECHNOLOGIES, LLC AND SHOULD NOT BE USED WITHOUT WRITTEN PERMISSION			EC NO: 110742 DRWN: XBTANG CHK'D: APPR: JDENG02			2016/11/23 2016/12/21		GENERAL TOLERANCES (UNLESS SPECIFIED) ANGULAR TOL ± 3.0 ° 4 PLACES ± 3 PLACES ± 2 PLACES ± 0.1 1 PLACE ± 0.3 0 PLACES ±		DIMENSION UNITS MM		SCALE 5:1						
		DRWN BY XBTANG		DATE 2016/08/22		CHK'D BY XBTANG		DATE 2016/09/20		APPR BY JDENG02		DATE 2016/09/26		SERIES 148032						
DRAFT WHERE APPLICABLE MUST REMAIN WITHIN DIMENSIONS		DRAWING SIZE A1		THIRD ANGLE PROJECTION 		CUSTOMER GENERAL MARKET			MATERIAL NUMBER SEE BOM			DOCUMENT NUMBER 1480324100			DOC TYPE CD		DOC PART 000		SHEET NUMBER 2 OF 4	

BOM AND OUTER DIMENSIONS



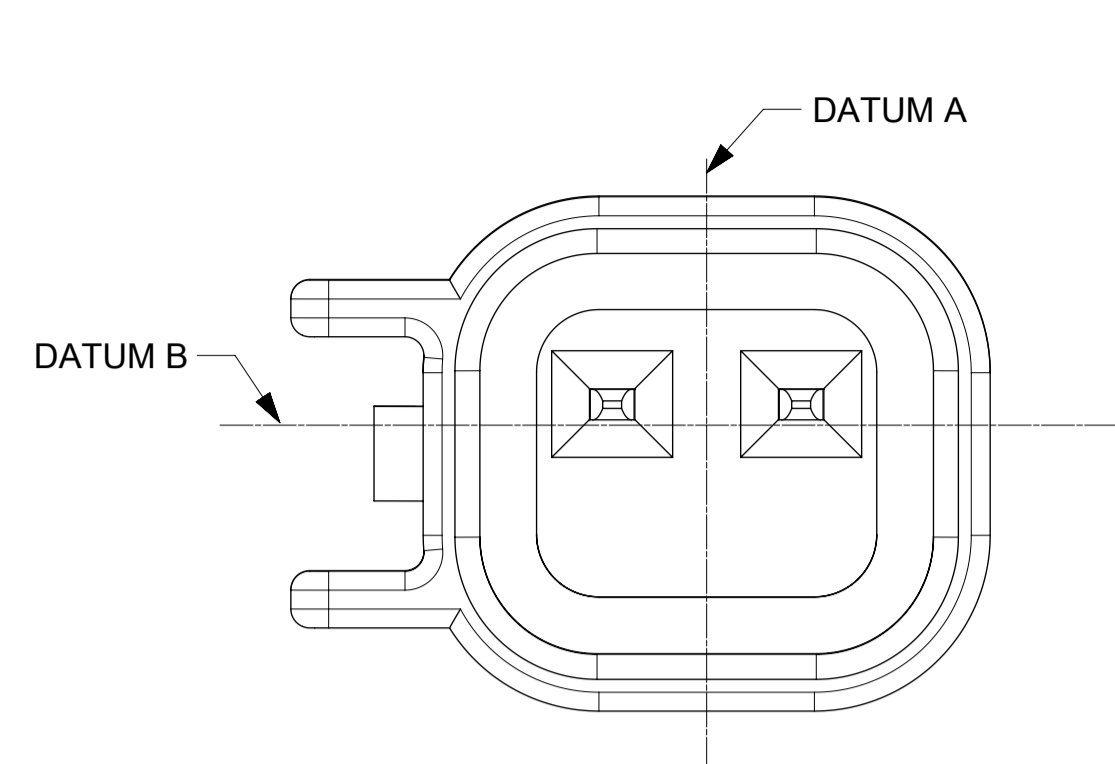
TPA SHOWN IN THE PRE-STAGED POSITION SECTION A-A

CONNECTOR POLARIZATION F BLACK	1480320006				F	CPA	TPA	DESIGN CONCEPT
CONNECTOR POLARIZATION E BLACK	1480320005				E	CPA	TPA	OK TO TOOL
CONNECTOR POLARIZATION D NATURAL	1480320004			D		CPA	TPA	DESIGN CONCEPT
CONNECTOR POLARIZATION C BLACK	1480320003				C	CPA	TPA	OK TO TOOL
CONNECTOR POLARIZATION B LIGHT GRAY	1480320002				B	CPA	TPA	OK TO TOOL
CONNECTOR POLARIZATION A BLACK	1480320001				A	CPA	TPA	DESIGN CONCEPT
ASSEMBLY DESCRIPTION	ASSEMBLY PART NUMBER							PRODUCTION TOOL STATUS

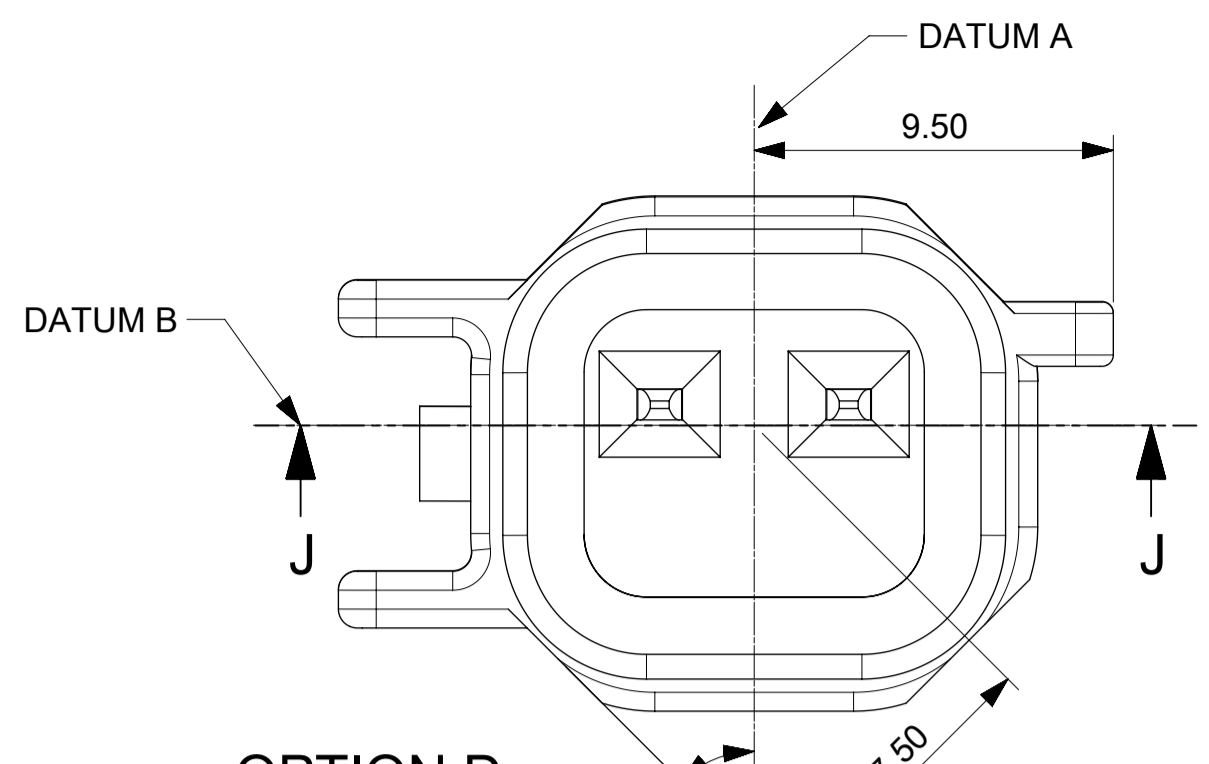
DESCRIPTION	COLOR	MATERIAL	STATUS
TPA	NATURAL	PBT GF30	OK TO TOOL
CPA	RED	PBT GF30	OK TO TOOL
HOUSING POLARIZATION F	BLACK	PBT GF15	DESIGN CONCEPT
HOUSING POLARIZATION E	BLACK	PBT GF15	OK TO TOOL
HOUSING POLARIZATION D	NATURAL	PBT GF15	DESIGN CONCEPT
HOUSING POLARIZATION C	BLACK	PBT GF15	OK TO TOOL
HOUSING POLARIZATION B	LIGHT GRAY	PBT GF15	OK TO TOOL
HOUSING POLARIZATION A	BLACK	PBT GF15	DESIGN CONCEPT

BOM AND APPLICABLE COMPONENT TABLE

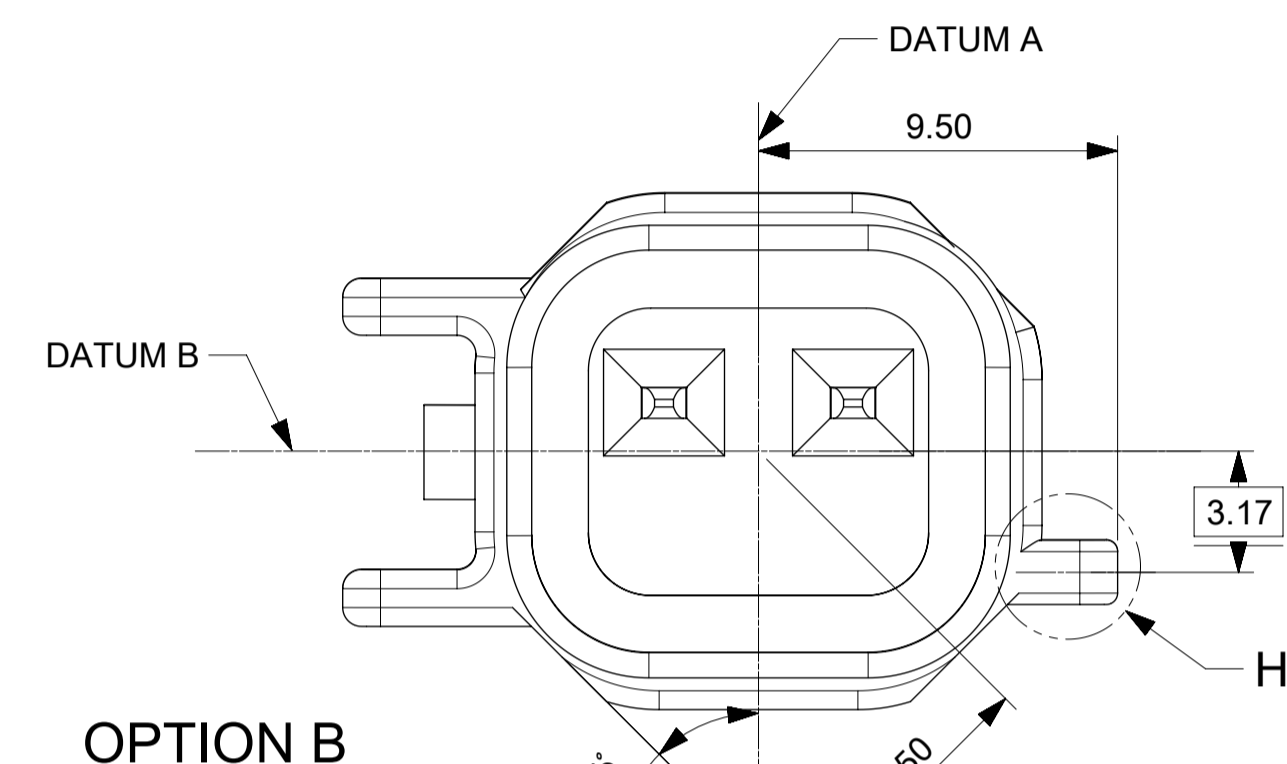
QUALITY SYMBOLS □ = 0 ▽ = 0 ▽ = 0 ▽ = 0 ▽ = 0 ▽ = 0 ▽ = 0 ▽ = 0 ▽ = 0 ▽ = 0	THIS DRAWING CONTAINS INFORMATION THAT IS PROPRIETARY TO MOLEX ELECTRONIC TECHNOLOGIES, LLC AND SHOULD NOT BE USED WITHOUT WRITTEN PERMISSION					
	GENERAL TOLERANCES (UNLESS SPECIFIED)		DIMENSION UNITS	SCALE		
	ANGULAR TOL ± 3.0 °		MM	5:1		
	4 PLACES ±	DATE	DRWN BY	DATE		
3 PLACES ±	2016/08/22	XBTANG	2016/09/20			
2 PLACES ± 0.1	DATE	CHK'D BY	DATE	148032 SEE BOM GENERAL MARKET 1480324100 CD 000 3 OF 4		
1 PLACE ± 0.3	2016/09/26	XBTANG	2016/09/26			
0 PLACES ±	DATE	APPR BY	DATE	DOCUMENT NUMBER 1480324100 DOC TYPE CD DOC PART 000 SHEET NUMBER 3 OF 4		
DRAFT WHERE APPLICABLE MUST REMAIN WITHIN DIMENSIONS	2016/12/21	JDENG02	2016/09/26			
DRAWING SIZE		THIRD ANGLE PROJECTION				
A1	A1					



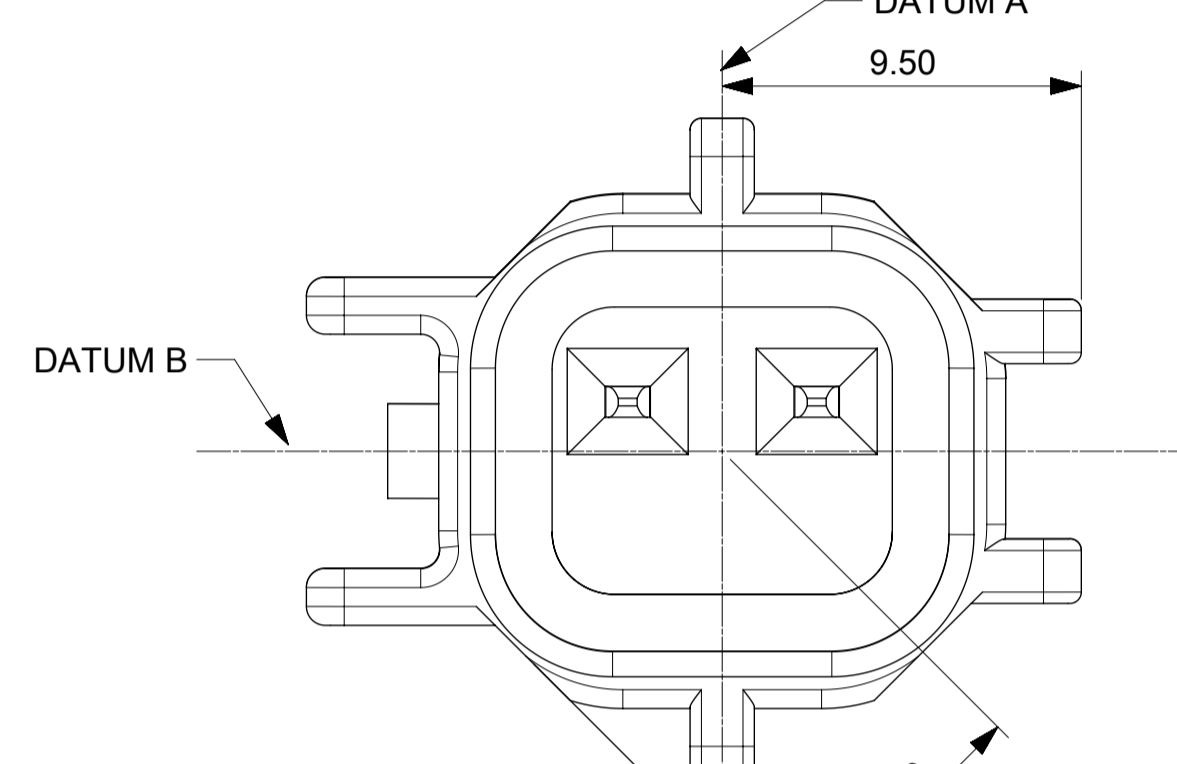
OPTION A



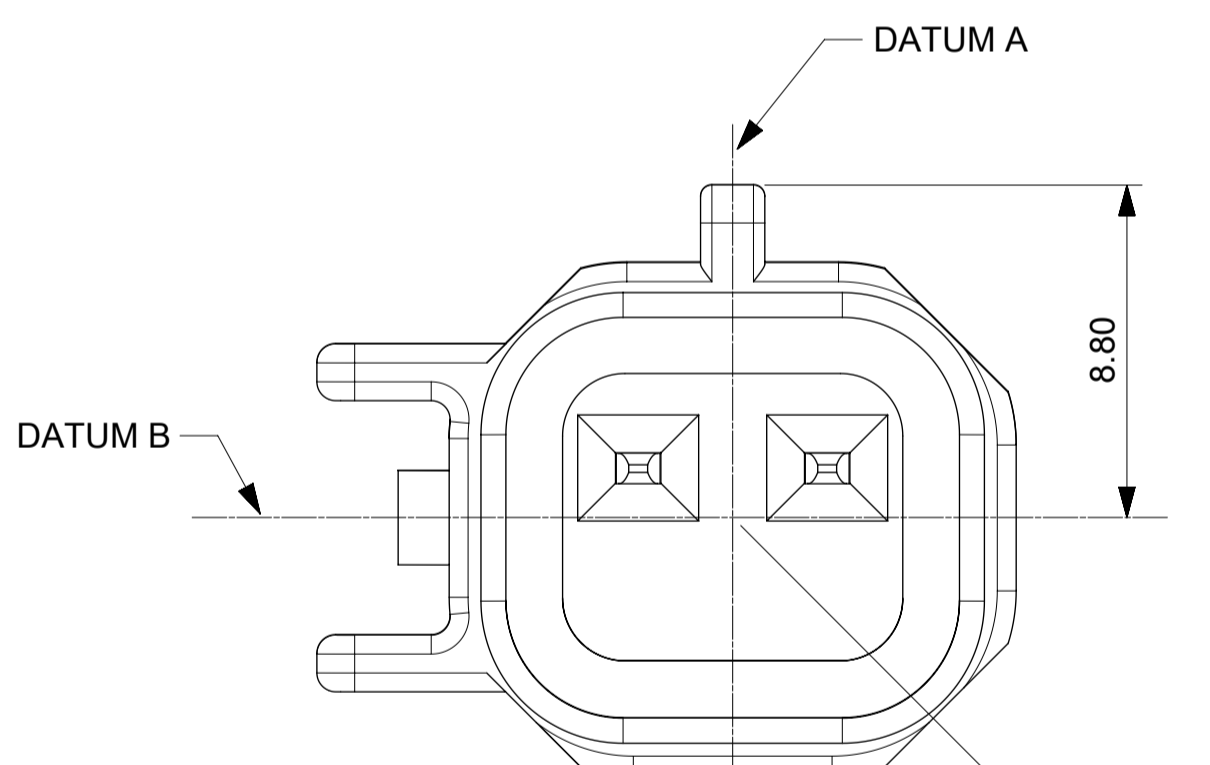
OPTION D



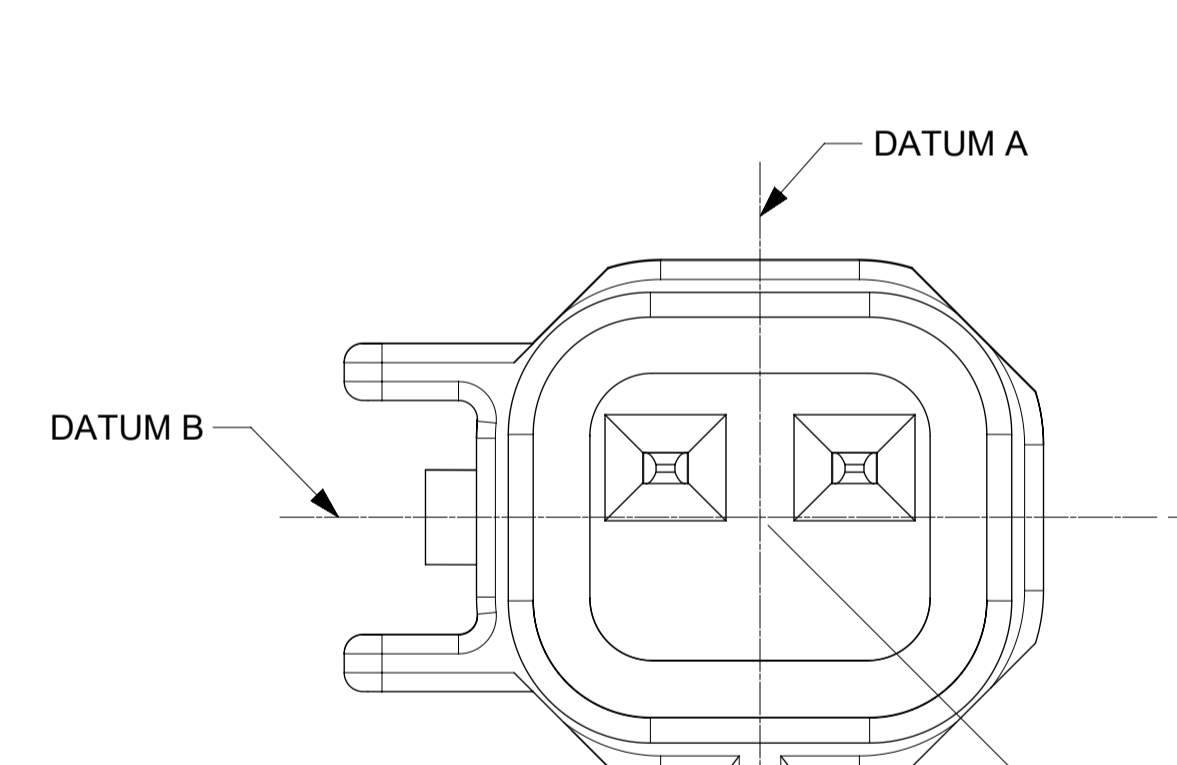
OPTION B



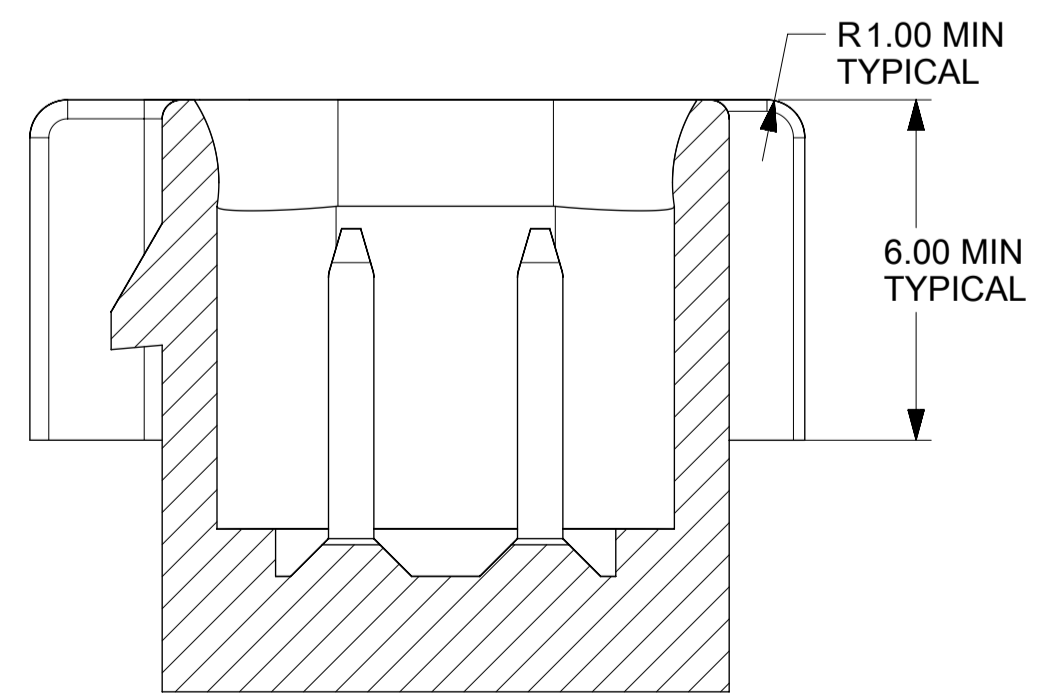
OPTION E



OPTION C

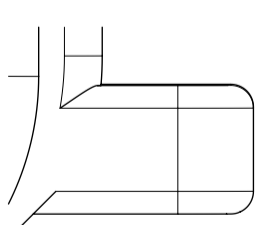


OPTION F

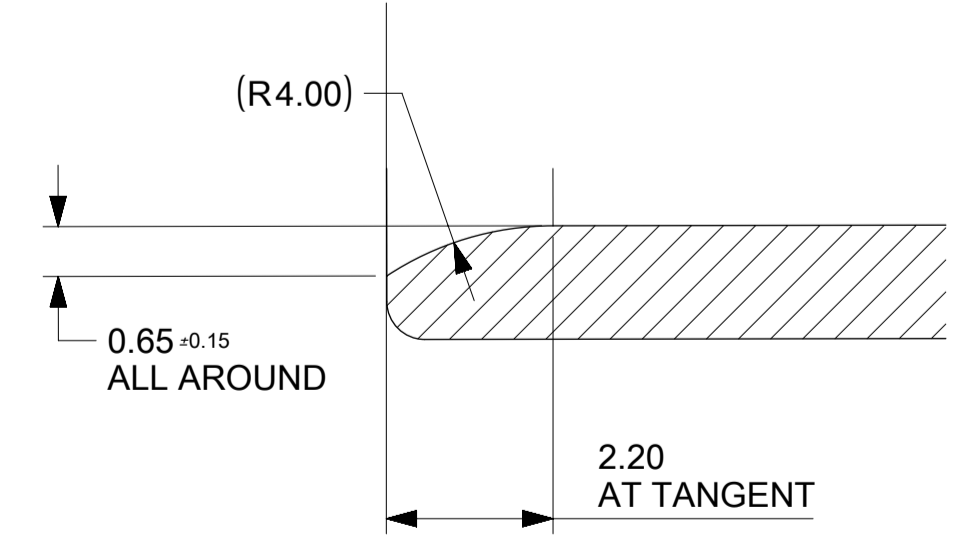


SECTION J-J

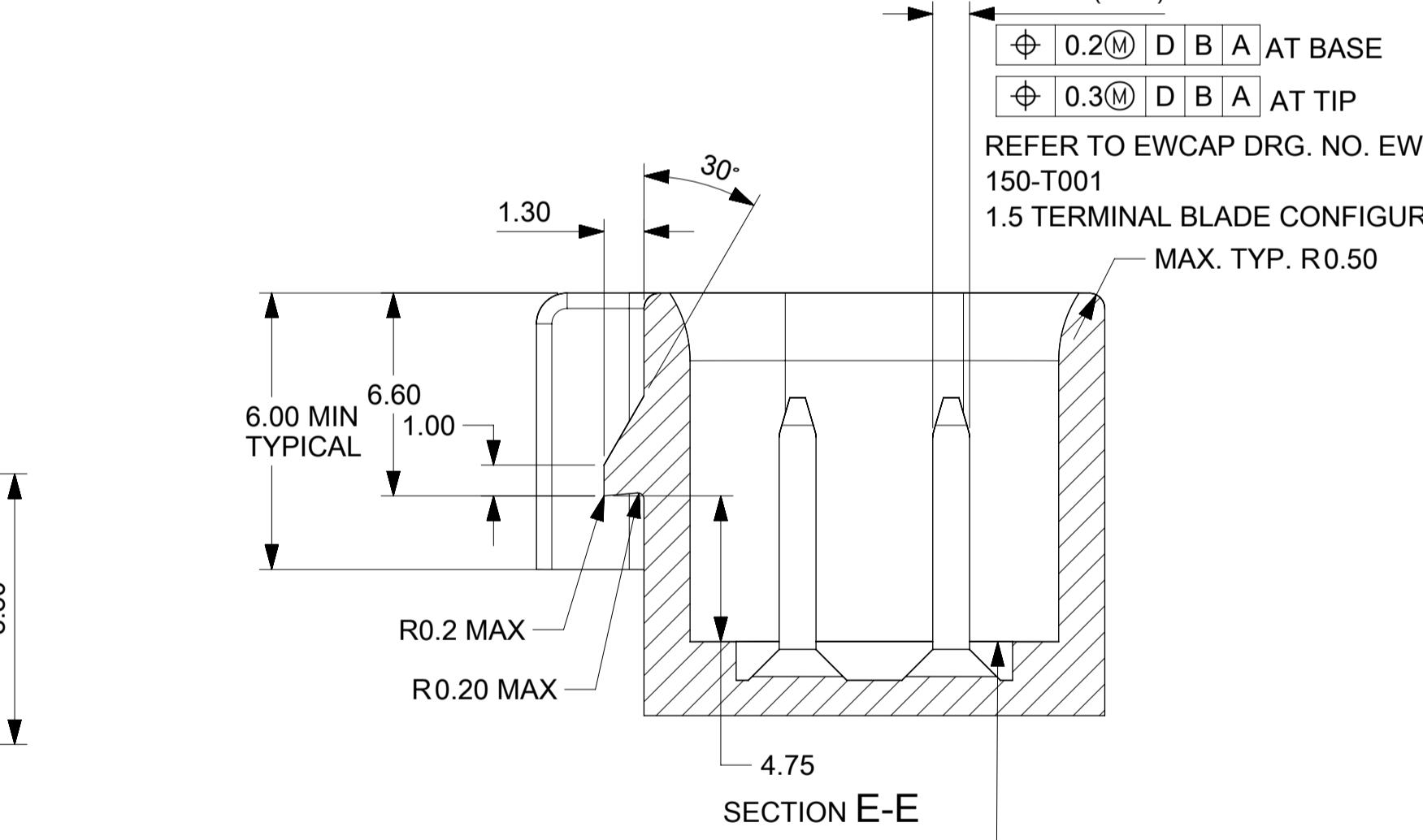
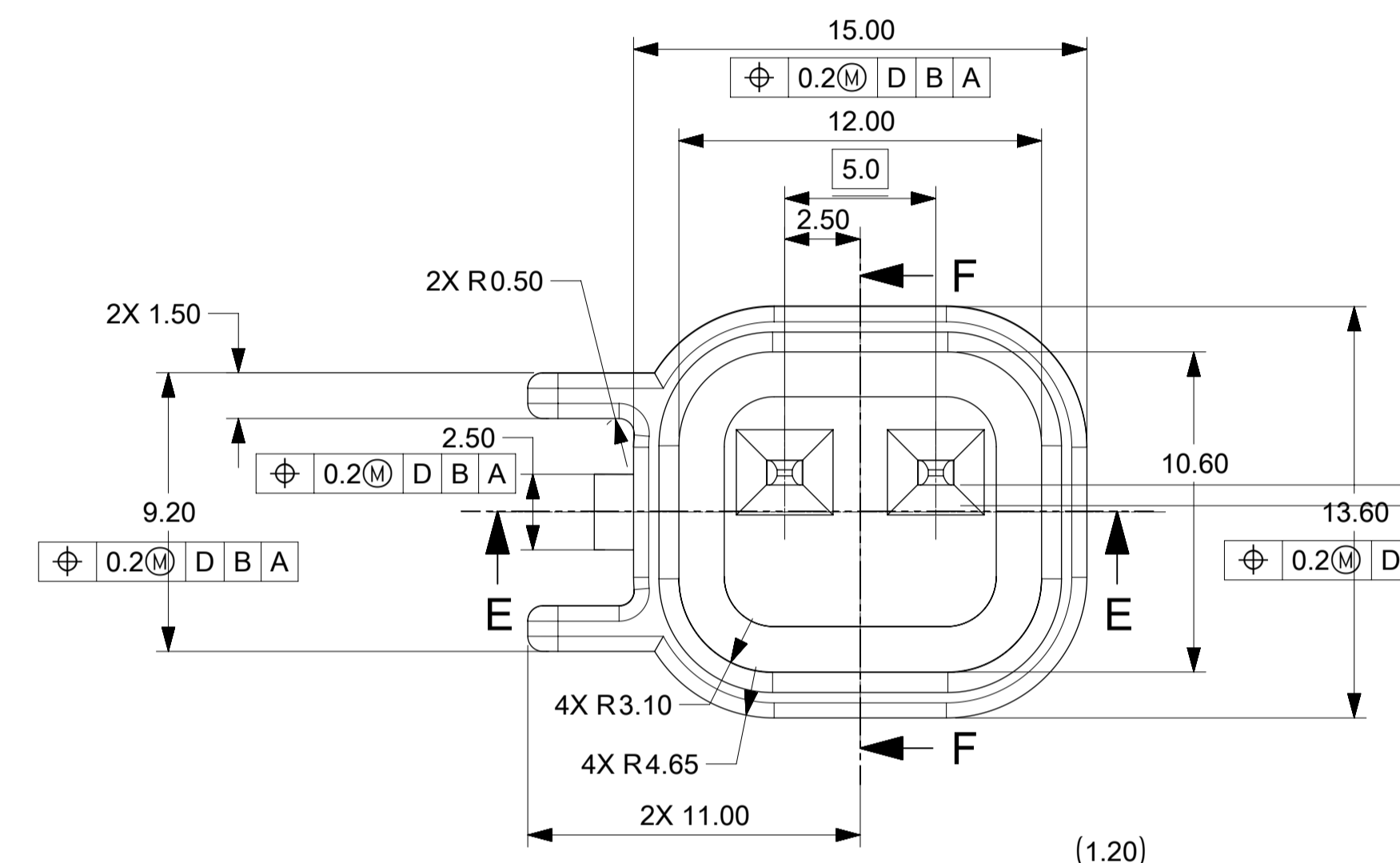
SEE KEYING OPTION VIEWS FOR POSITIONS



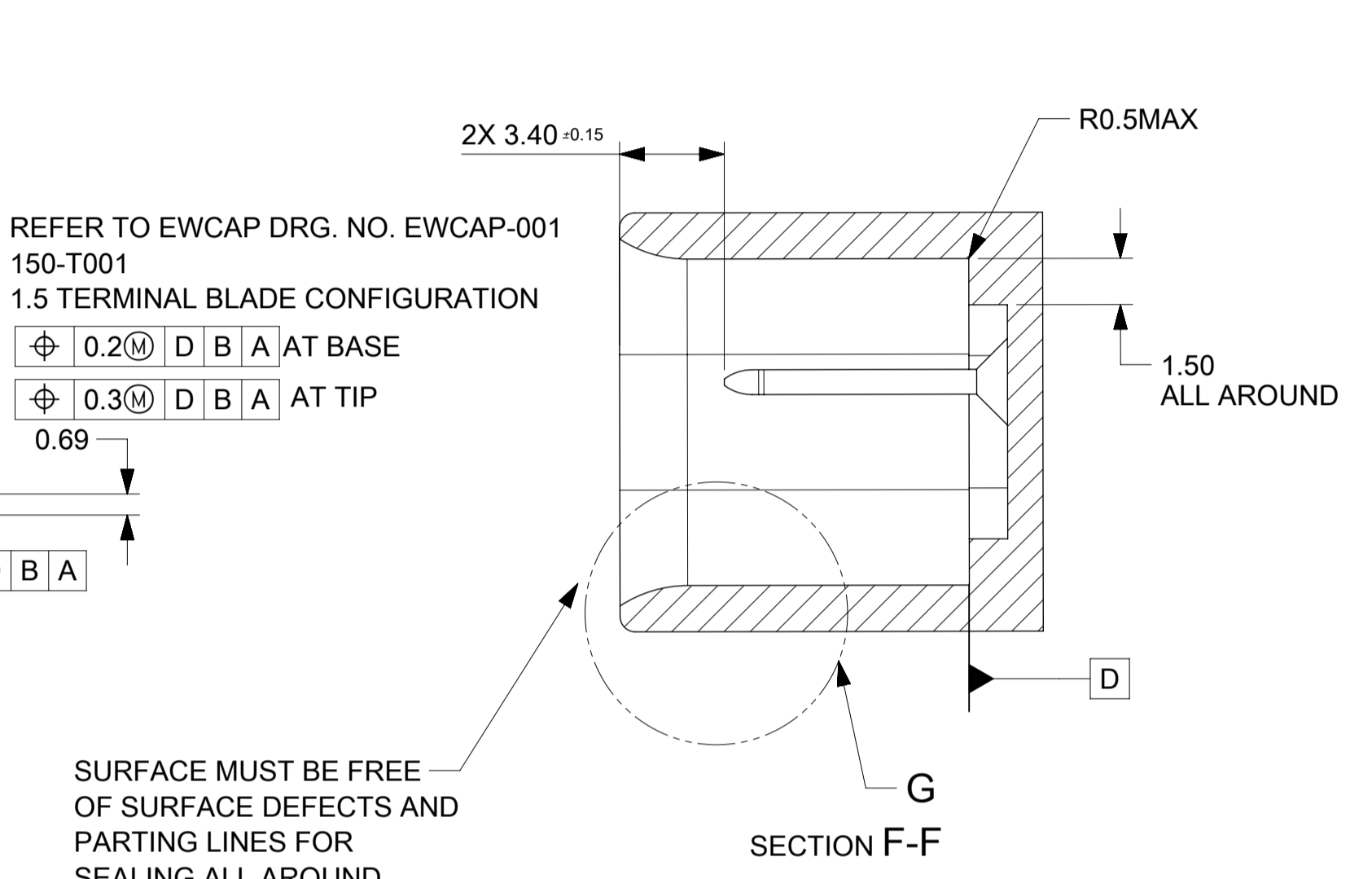
DETAIL H
SCALE 10:1
TYPICAL
SEE KEYING OPTION VIEWS FOR POSITIONS



DETAIL G
SCALE 10:1

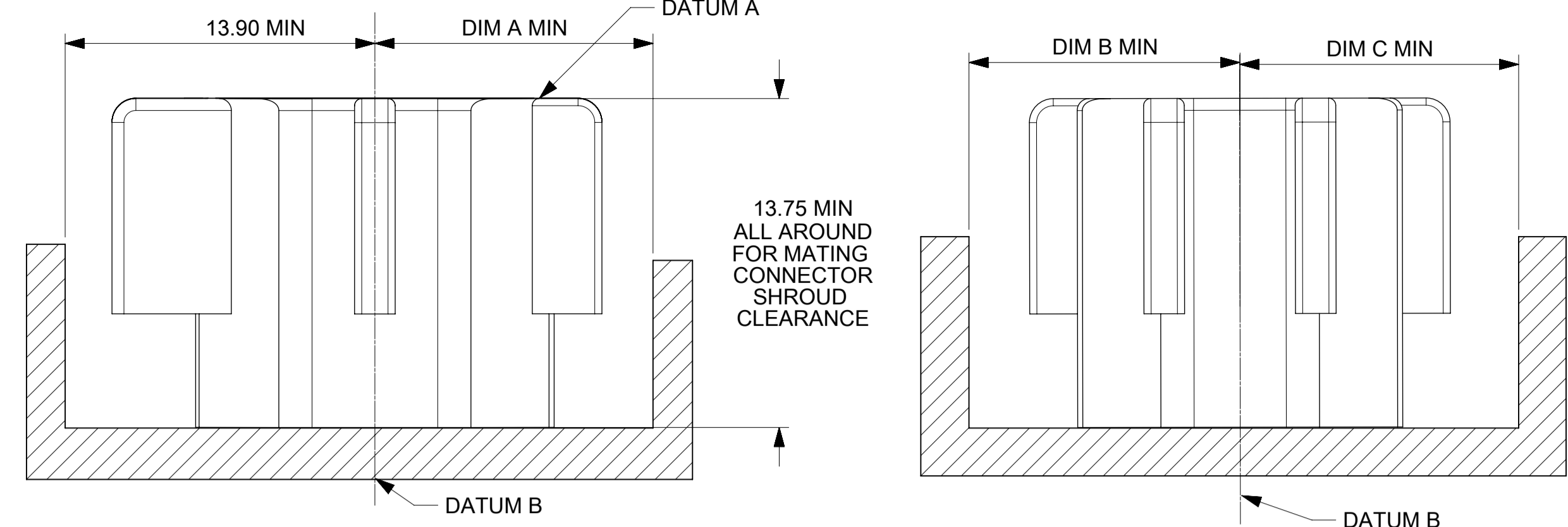


SECTION E-E



SECTION F-F

PACKAGING FRAME



KEY OPTION	DIMENSIONS		
	DIM A	DIM B	DIM C
A	9.90	9.20	9.20
B	11.80	9.20	9.20
C	9.90	9.20	11.00
D	11.80	9.20	9.20
E	11.80	11.00	11.00
F	9.90	11.00	9.20

IF A HEADER IS RECESSED INTO A POCKET, THESE DIMENSIONS REPRESENT THE MINIMUM CLEARANCE REQUIRED FOR THE MATING CONNECTOR SHROUD.

REFER TO EWCAP DRG. NO. EWCAP-001 150-T001 1.5 TERMINAL BLADE CONFIGURATION

Ø 0.2 (M) D B A AT BASE
Ø 0.3 (M) D B A AT TIP

SURFACE MUST BE FREE OF SURFACE DEFECTS AND PARTING LINES FOR SEALING ALL AROUND

Ø 0.2 (M) D B A AT BASE
Ø 0.3 (M) D B A AT TIP

REFER TO EWCAP DRG. NO. EWCAP-001 150-T001 1.5 TERMINAL BLADE CONFIGURATION

MAX. TYP. R0.50

NOTES: UNLESS OTHERWISE SPECIFIED

- ALL DIMENSIONS SHOWN IN MILLIMETERS.
- DIMENSIONING AND TOLERANCING PER ASME Y14.5M-1994
- 0.25 RADII ON ALL CORNERS SHOWN SHARP.
- UNSPECIFIED RADII: 0.25 EXCEPT AS NOTED.
- STANDARD COLORS FOR POLARIZATION (SEE CHART). DEVIATION REQUIRES APPROVAL OF AUTHORIZED PERSON.
- REFER TO SAE/USCAR 12 CONNECTOR GUIDELINES FOR ADDITIONAL REQUIREMENTS.
- EXCEPT WHERE NOTED, DRAFT ON OUTSIDE SURFACES IS PERMISSIBLE WITHIN TOLERANCE.
- SYMBOL INDICATES DRAFT DIRECTION.
- FOR TERMINAL MATERIAL, DIMENSIONAL, AND COATING REQUIREMENTS AND ANY BLADE TERMINAL DESIGN INFORMATION NOT SHOWN ON THIS DRAWING SEE EWCAP DWG. NO. EWCAP-001
- A FULL SHROUD ON THE MATING CONNECTOR IS REQUIRED TO ENSURE THAT THE CONNECTOR-HEADER POLARIZATION FEATURES (OPTIONS A THRU H) WILL FUNCTION. THE FULL SHROUD ALSO PREVENTS SCOOP DAMAGE TO THE HEADER PINS. REFER TO SAE/USCAR-12 CONNECTOR DESIGN GUIDE LINES FOR ADDITIONAL INFORMATION.
- REFER TO USCAR/EWCAP PART LIST AS FOUND ON WEBSITE <http://www.uscarteams.org>
- THIS IS A 100% CAD GENERATED PART. THE CAT MATHEMATICAL DATA IS THE MASTER FOR THIS PART. FOR DIMENSIONAL OR ANY INFORMATION NOT SHOWN ON THIS DRAWING, ANALYZE THE CAD MODEL.

<p>QUALITY SYMBOLS</p> <p>▽ = 0 ▽ = 0 ▽ = 0 ▽ = 0 ▽ = 0 ▽ = 0 ▽ = 0 ▽ = 0 ▽ = 0</p>				<p>THIS DRAWING CONTAINS INFORMATION THAT IS PROPRIETARY TO MOLEX ELECTRONIC TECHNOLOGIES, LLC AND SHOULD NOT BE USED WITHOUT WRITTEN PERMISSION</p>				<p>DRWN BY: XBTANG CHK'D: JDENG02 APPR: JDENG02</p>		<p>DATE: 2016/08/22 DATE: 2016/09/20 DATE: 2016/09/26</p>		<p>SCALE: 5:1</p>		<p>DIMENSION UNITS: MM</p>		<p>DATE: 2016/08/22</p>		<p>DATE: 2016/09/20</p>		<p>DATE: 2016/09/26</p>	
<p>GENERAL TOLERANCES (UNLESS SPECIFIED)</p> <p>ANGULAR TOL ± 3.0 °</p> <p>4 PLACES ±</p> <p>3 PLACES ±</p> <p>2 PLACES ± 0.1</p> <p>1 PLACE ± 0.3</p> <p>0 PLACES ±</p>				<p>DRAWN BY: XBTANG</p> <p>CHK'D BY: JDENG02</p> <p>APPR BY: JDENG02</p>				<p>DRAWING SIZE: A1</p>		<p>THIRD ANGLE PROJECTION</p>		<p>SERIES: 148032</p>		<p>MATERIAL NUMBER: SEE BOM</p>		<p>CUSTOMER: GENERAL MARKET</p>					
<p>RELEASE STATUS: P1</p>				<p>RELEASE DATE: 26.09.2016 05:49:11</p>				<p>DOCUMENT NUMBER: 1480324100</p>		<p>DOC TYPE: CD</p>		<p>DOC PART: 000</p>		<p>SHEET NUMBER: 4 OF 4</p>							



GM2W UNSEAL SPEAKER ASSEMBLY SALES DRAWING

CUSTOMER DRAWING