

THIS DRAWING IS UNPUBLISHED. RELEASED FOR PUBLICATION 2008
 © COPYRIGHT 2008 BY TYCO ELECTRONICS CORPORATION. ALL RIGHTS RESERVED.

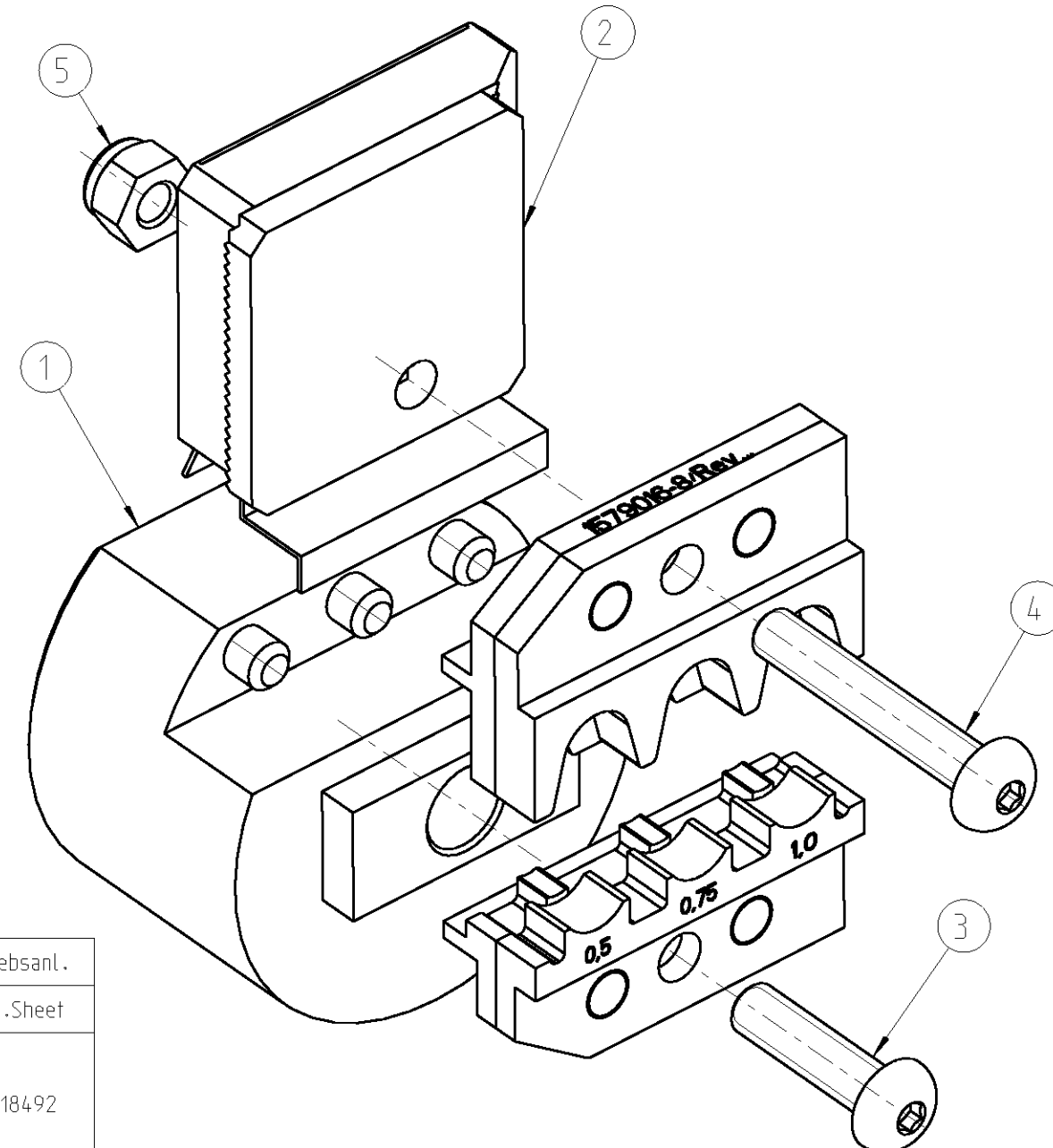
LOC	DIST	REVISIONS					
		P	LTR	DESCRIPTION	DATE	DWN	APVD
AI	-	-	-		-	-	-

ERGOCRIMP DIE SET FOR \varnothing 4 mm SOCKET CONTACT 0,5-1,0 mm² SWS
 ERGOCRIMP-Matrize fuer \varnothing 4 mm Buchsenkontakt 0,5-1,0 mm² EDS

Matrize in Kombination mit Ergocrimp Basishandzange TE P/N 539635-1 verwenden
 Use die in combination with Ergocrimp basis hand tool TE P/N 539635-1

Matrize im Karton mit Bedienungsanleitung 411-18492 verpackt
 Die packed in a cardboard with instruction sheet 411-18492

1579016-8	1	8-0744013-5	Instruction Sheet	Bedienungsanleitung	6
	1	0-0519024-2	Nut M4 DIN 985	Mutter M4 DIN 985	5
	1	1-0519151-3	Screw M4x25	Schraube M4x25	4
	1	1-0519151-1	Screw M4x16	Schraube M4x16	3
	1	2-1579025-3	Locator Assembly	Drahtanschlag	2
	1	1-1579025-9	Contact Locator	Kontaktpositionierer	1
	QTY Stck	TE P/N	Description	Benennung	Pos.



Kontakt	DGB (mm ²)	Drahtcrimp / Wire Crimp		Isolationscrimp/Insulationcrimp		Isol. \varnothing	Betriebsanl.
Contact	Wire Range	Hoehe/Height mm	Breite/Width mm	Hoehe/Height mm	Breite/Width mm	Ins.Range	Instr.Sheet
962953	0,50	1,26 \pm 0,05	2,03 F	6,35 \pm 0,1	6,35 0	1,4-1,6	411-18492
	0,75	1,34 \pm 0,05		6,35 \pm 0,1		1,7-1,9	
	1,00	1,43 \pm 0,05		6,35 \pm 0,1		1,9-2,1	

<small>THIS DRAWING IS A CONTROLLED DOCUMENT FOR TYCO ELECTRONICS CORPORATION IT IS SUBJECT TO CHANGE AND THE CONTROLLING ENGINEERING ORGANIZATION SHOULD BE CONTACTED FOR THE LATEST REVISION.</small>		DWN Ch. Witt	14MAY2008	tyco Electronics		tyco Electronics AMP GmbH D - 64625 Bensheim		
DIMENSIONS: mm 		TOLERANCES UNLESS OTHERWISE SPECIFIED: 0 PLC \pm 1 PLC \pm 2 PLC \pm 3 PLC \pm 4 PLC \pm ANGLES \pm 1°		NAME ERGOCRIMP DIE SET FOR \varnothing 4 mm SOCKET CONTACT 0,5-1,0 mm ² SWS		RESTRICTED TO -		
MATERIAL -		FINISH -		PRODUCT SPEC -	APPLICATION SPEC -	SIZE A3	CAGE CODE 00779	DRAWING NO C=1579016-8
CUSTOMER DRAWING				WEIGHT 200 g	SCALE 2:1	SHEET 1	OF 1	REV A