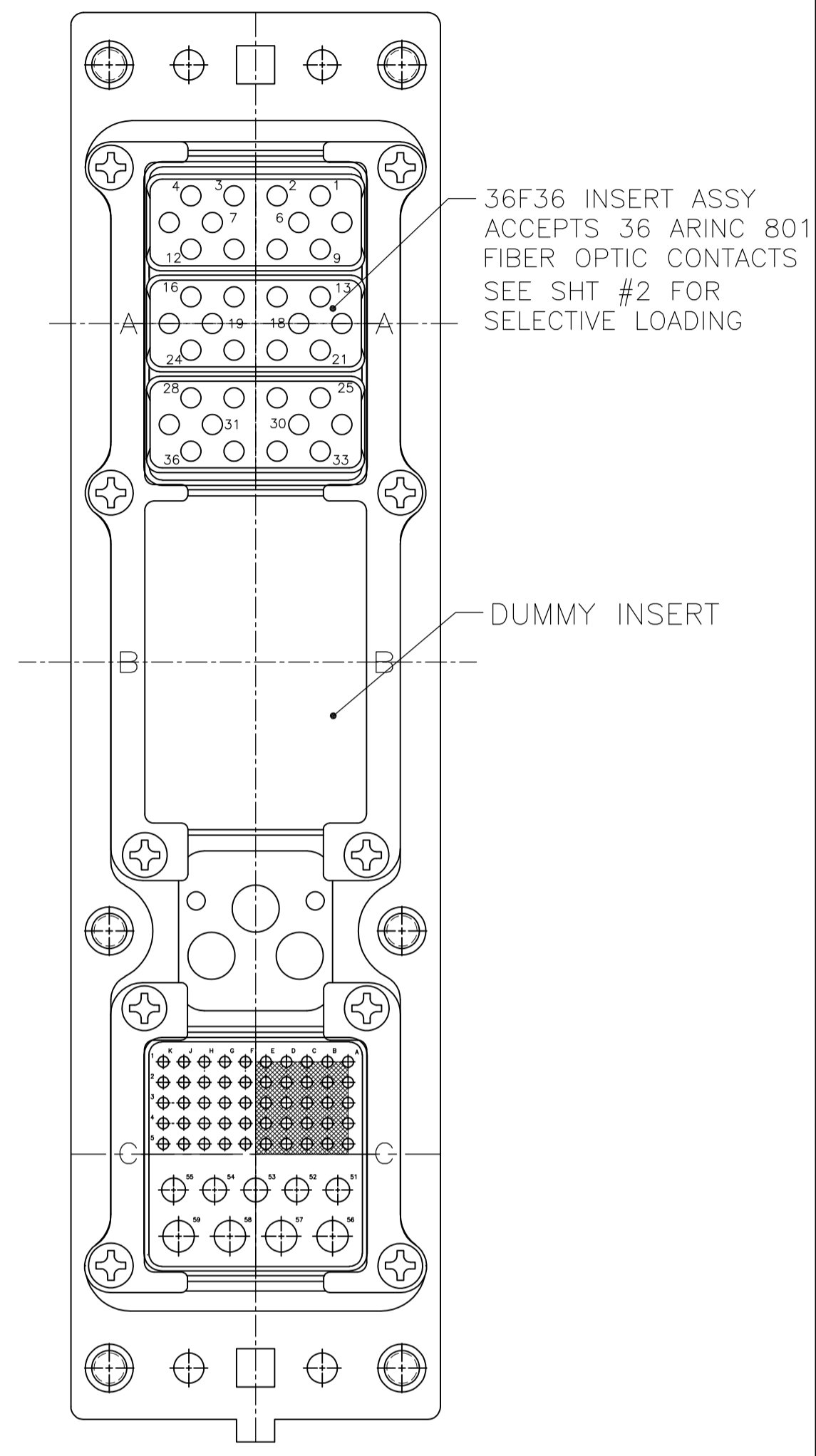
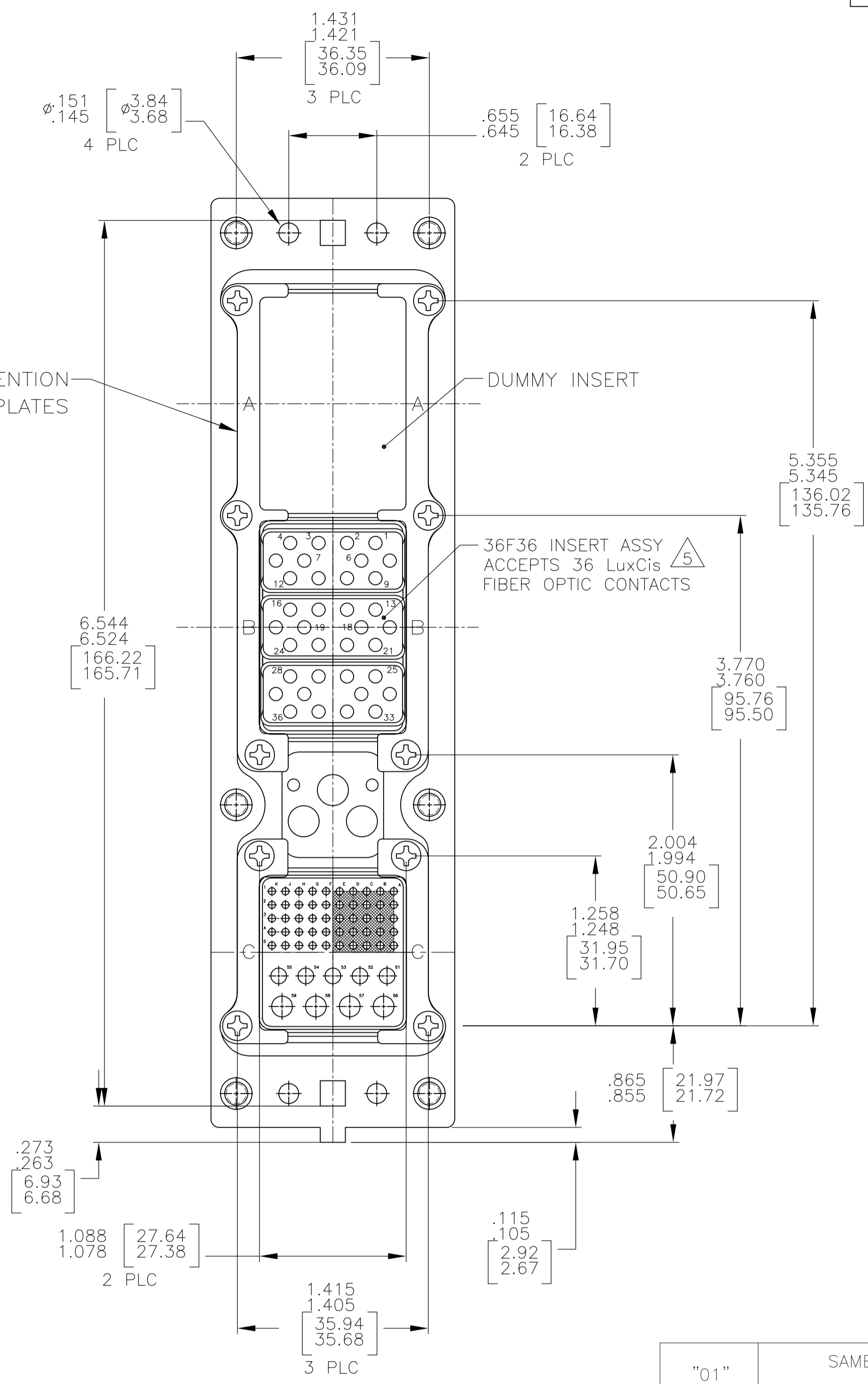
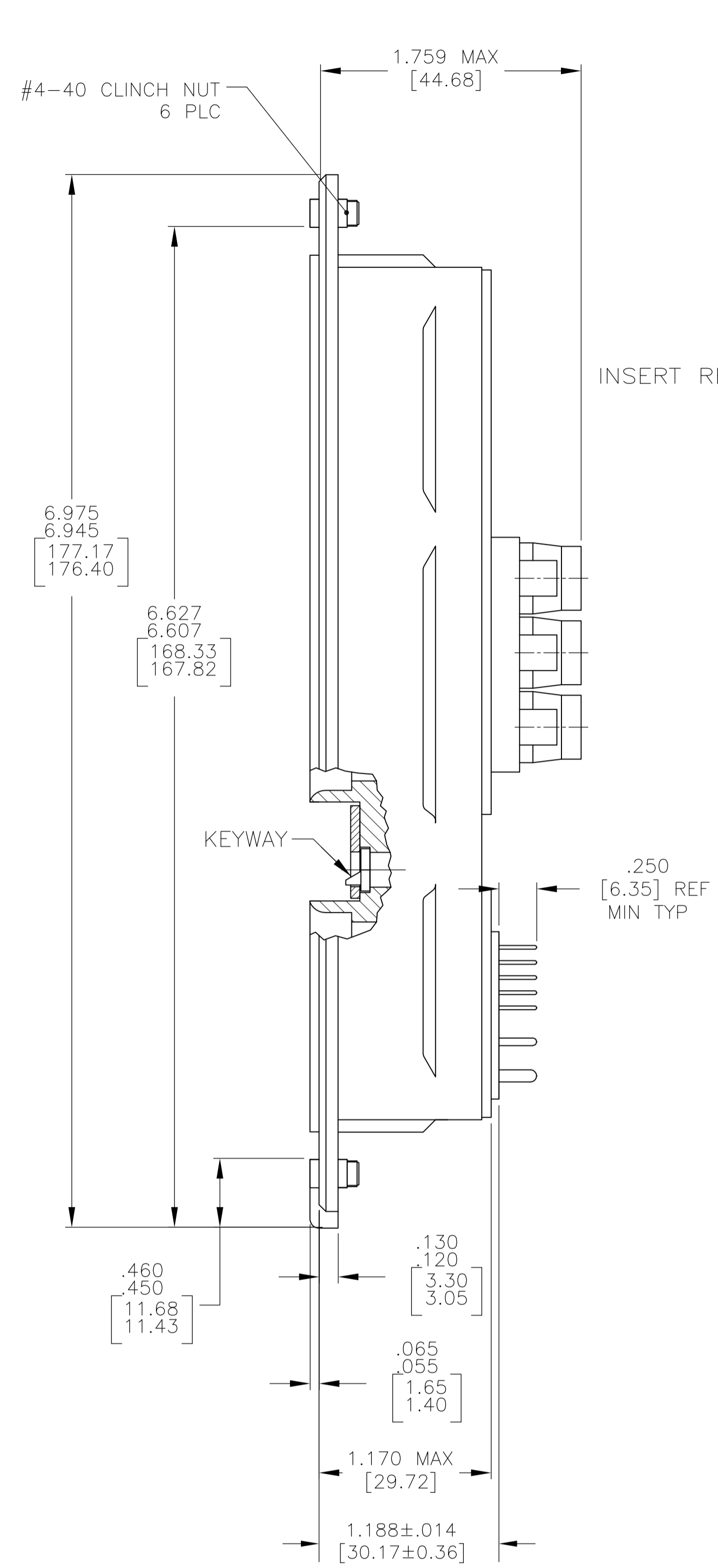
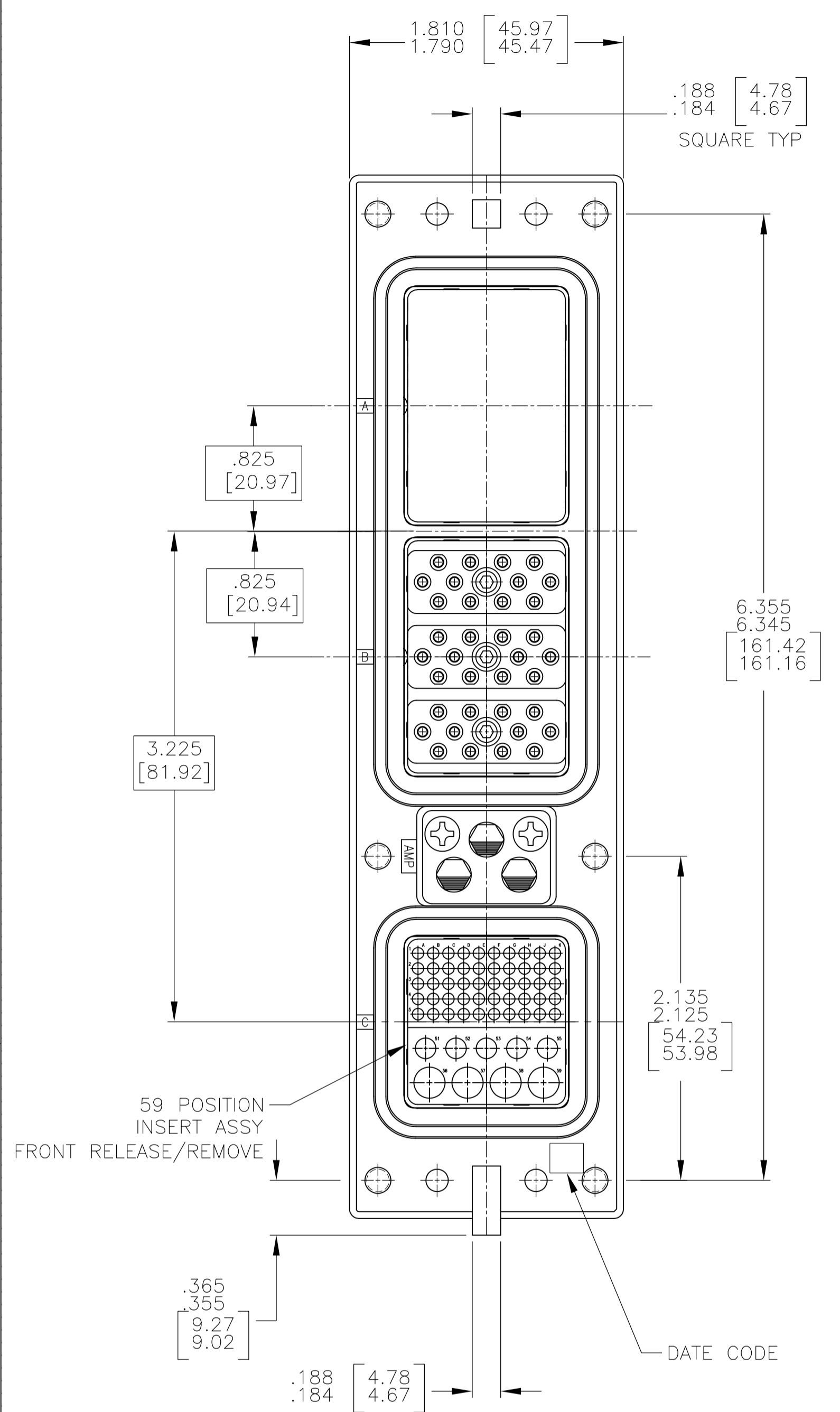


REVISONS		DATE	BY	APPV
F	LTR			
H	REV PER ECO-12-000109	24JAN12	PY	WB



- CONNECTOR DIMENSIONS ARE PER ARINC 600 SPECIFICATION.
- CONNECTOR IS SUPPLIED WITH CONTACTS (PER TABLE) ASSEMBLED AS SHOWN.
- KEYING SHOWN IN POSITION "01" FOR ILLUSTRATION ONLY. CONNECTORS SHIPPED WITH KEYING INSTALLED IN POSITION PER TABLE. FOR POSITION "00" KEYING HARDWARE SHIPPED UNASSEMBLED.
- MODULE B (-1), MODULE A (-2) (36F36) IS SUPPLIED WITHOUT CONTACTS. MUST BE ORDERED SEPARATELY.
- DUST COVER IS INSTALLED BUT NOT SHOWN.

COMPONENT	MATERIAL	FINISH
SHELL	DIE CAST ALUMINUM PER ASTM-B-85	ELECTROLESS NICKEL PER MIL-C-26074
INSERT RETENTION PLATES	ALUMINUM ALLOY PER ASTM-B-209	ELECTROLESS NICKEL PER MIL-C-26074
FLAT HEAD SCREWS AND LOCKWASHERS	STAINLESS STEEL	PASSIVATED
POLARIZING KEYS	ZINC ALLOY PER ASTM-B-86	-
POLARIZING KEY RETAINING PLATE	ALUMINUM ALLOY PER ASTM-B-209	BLUE ANODIZED PER MIL-A-8625
CLINCH NUT	STEEL	TRIVALENT CHROMATE OVER ZINC PLATE WITH MOLY LUBE
36F36 INSERT	THERMOSET OR THERMOPLASTIC PPS PER MIL-M-24519	-
DUMMY INSERT	ALUMINUM ALLOY PER ASTM-B-85	ELECTROLESS NICKEL PER MIL-C-26074
59 POSITION INSERT	THERMOSET OR THERMOPLASTIC PPS PER MIL-M-24519	-

KEYING POSITION	CONTACTS INCLUDED AND INSTALLED	PART NUMBER
"01"	SAME AS 1183150-2 EXCEPT USING TE 801 INSERTS	1883150-3
"01"	MODULE C 1663767-3 SZ 16 FILLER PLUG (QTY=5) 1663767-1 SZ 22 FILLER PLUG (QTY=15) 203839-2 SZ 16 SEALING PLUG (QTY=22) 211431-4 SZ 22 SOCKET CONTACT (QTY=35) 448140-3 SZ 12 PIN CONTACT (QTY=4) SELECTIVE LOADED (SEE SHEET #2) PURCHASED INSERTS USED IN THIS ASSEMBLY	1883150-2
"01"	MODULE C 211431-4 SZ 22 SOCKET CONTACT (QTY=50) 1-448139-1 SZ 16 PIN CONTACT (QTY=5) 448140-3 SZ 12 PIN CONTACT (QTY=4)	1883150-1

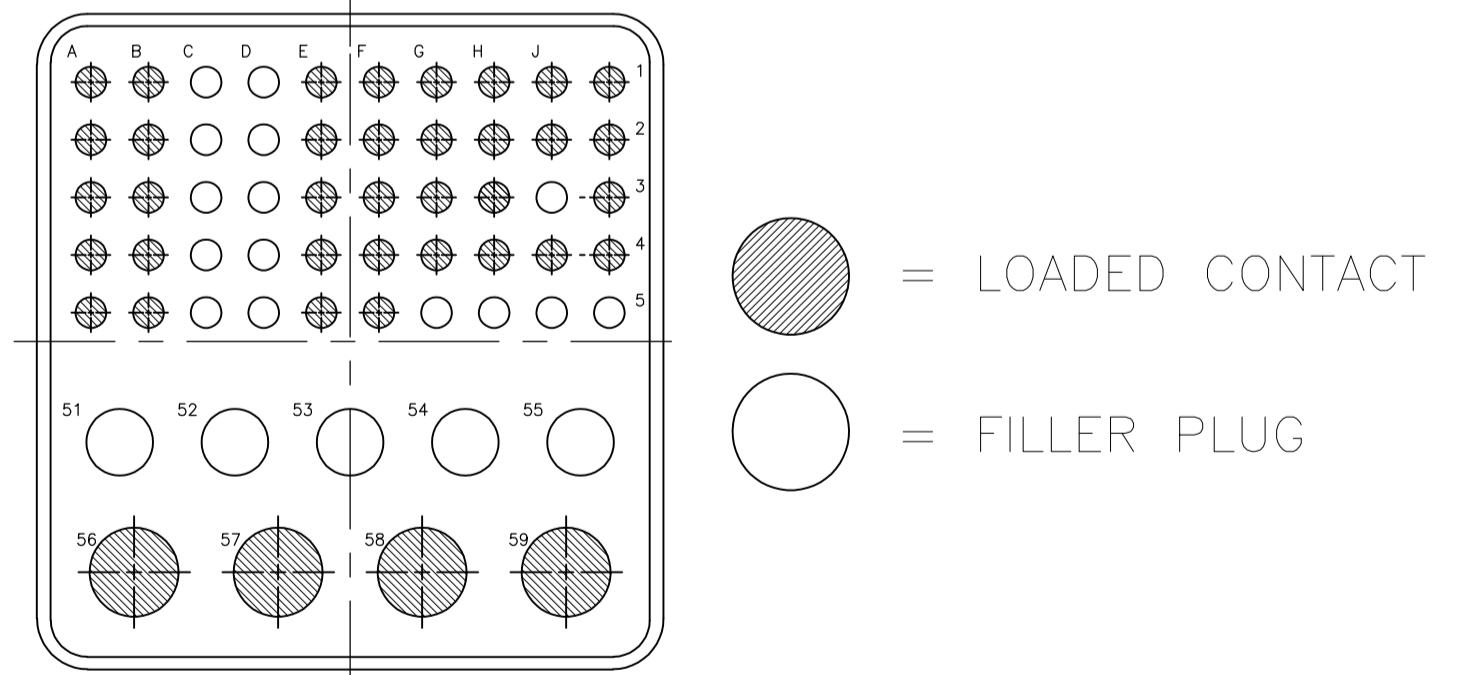
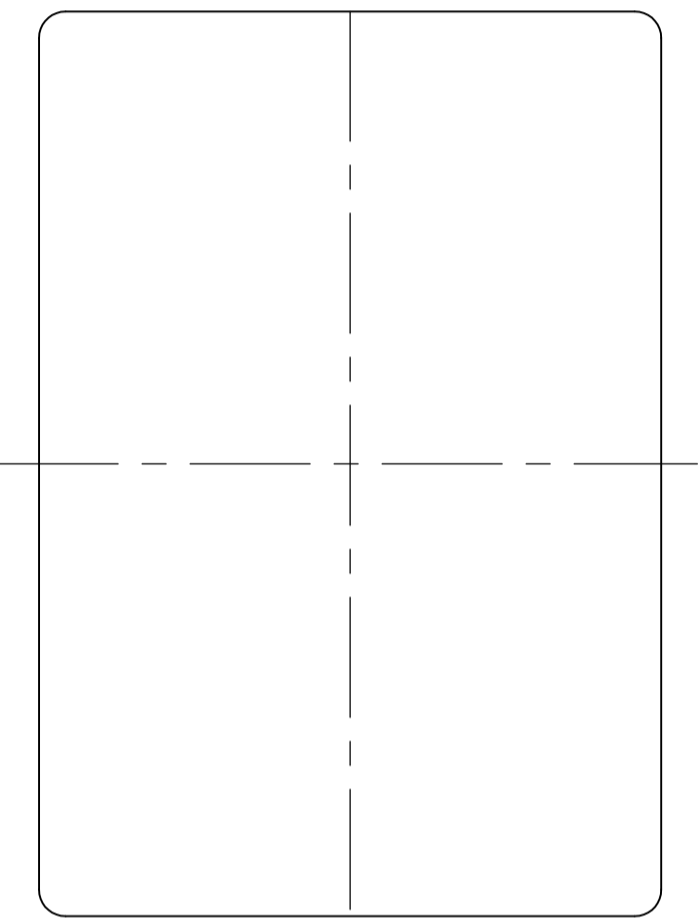
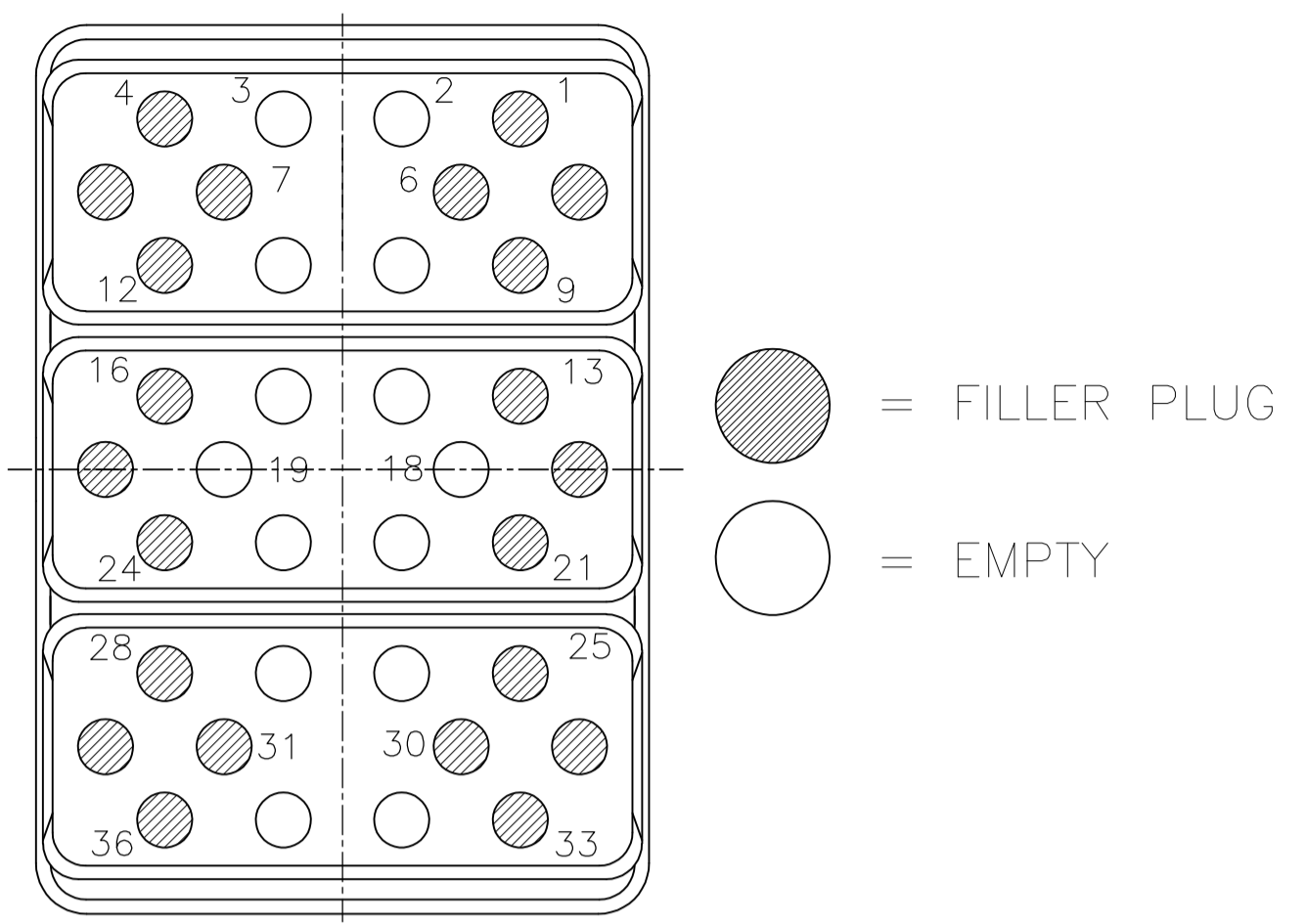
THIS DRAWING IS A CONTROLLED DOCUMENT.

DIN C.C.THOMAS 1-3-07  
CIR K.HOGAN 1-3-07  
APPV K.HOGAN 1-3-07

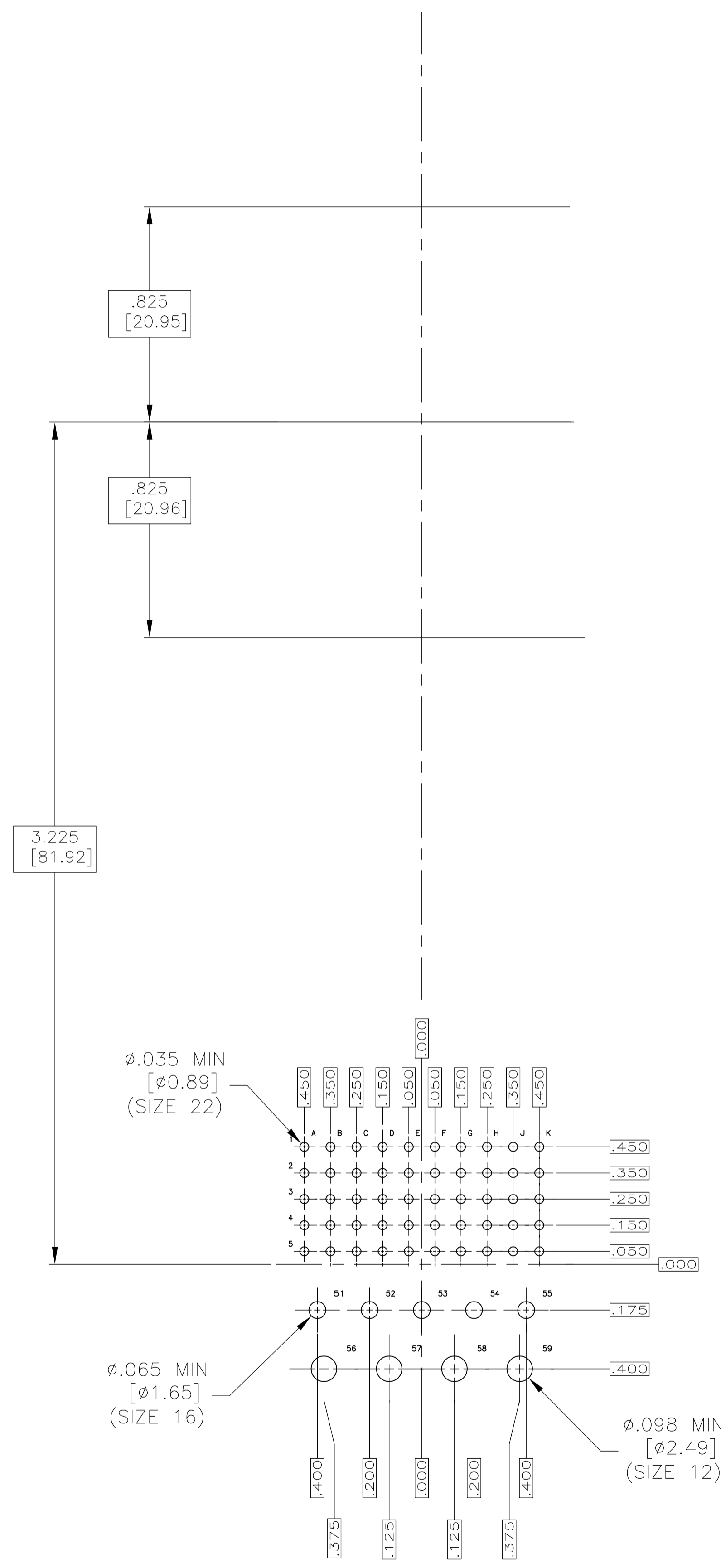
TE Connectivity

RCPT ASSY, SIZE 2, ARINC 600

SCALE 1.5:1 SHEET 1 OF 2 REV H



1883150-2  
SELECTIVE LOAD VIEW  
SCALE 3:1



RECOMMENDED  
P.C. BOARD LAYOUT  
SCALE 3:1

THIS DRAWING IS A CONTROLLED DOCUMENT.		DIN C.C.THOMAS 1-3-07	TE Connectivity
DIMENSIONS: INCHES		CHK K.HOGAN 1-3-07	
TOLERANCES UNLESS OTHERWISE SPECIFIED:		APVD K.HOGAN 1-3-07	NAME RCPT ASSY,SIZE 2,ARINC 600
0 PLG	±	PRODUCT SPEC	
1 PLG	±	APPLICATION SPEC	
2 PLG	±		
3 PLG	±		
4 PLG	±		
ANGLES	±		
MATERIAL SEE TABLE	FINISH SEE TABLE	WEIGHT -	RESTRICTED TO -
CUSTOMER DRAWING		SIZE A1	CAGE CODE 00779
		DRAWING NO 1883150	REV H
		SCALE 1.5:1	SHEET 2 OF 2